



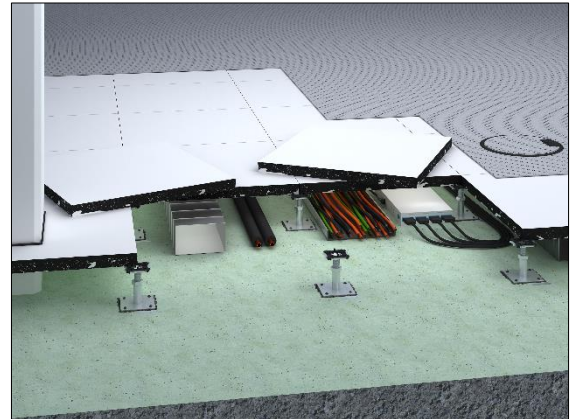
LOOP

Refurbished raised floor

The raised floor system LOOP is the ideal product for nearly all applications with its excellent technical and building-physical characteristics. The refurbished raised floor panels consist of fibre-reinforced calcium sulphate and have a steel sheet at bottom side. The panels are protected against damage and humidity by the original surrounding edge trim. The substructure which forms the necessary cavity for installations consists of height-adjustable zinc-coated steel pedestals and gaskets for sound decoupling.

By using refurbished raised floor panels, the following savings compared with the equivalent new product are achieved. The savings have to be proven on demand:

- carbon saving: 72.2 %, leads to an improvement of the carbon footprint to 6.7 kg/m²
- reusage: 100 %



Samples for building portfolio

Common Rooms, Facilities for Meetings, Conventions and Conferences, Offices, Banks, Schools of Higher Education, Schools, Residential

Technical data

Weight	47 - 67 kg/m ²	
Panel thickness	30 - 39 mm	
Standard pedestal height	20 - 2,000 mm	
Pedestal grid	599 mm x 599 mm	
Dimensional deviation	class 2	

Statics

Load and deflection class	DIN EN 12825	1A - 2A
Point load (breaking load)	DIN EN 12825	2 kN (4 kN) - 3 kN (6 kN)
Seismic safety		earthquake-proof construction possible

Fire protection

Reaction to fire performance of the carrier panel

Reaction to fire performance	DIN EN 13501-1	A1 A2-s1,d0
Designation by the building authorities	DIN EN 13501-1	non-combustible



Acoustics

Building acoustics

Normalised flanking level difference (depending on additional measures)	DIN EN ISO 10848-2	$D_{n,f,w}$	48 - 64 dB
Weighted sound reduction index (depending on additional measures)	DIN EN ISO 10140-2	R_w	61 dB
Reduction of impact sound pressure level (depending on additional measures)	DIN EN ISO 10140-1	ΔL_w	12 - 36 dB
Normalised flanking impact sound pressure level (depending on additional measures)	DIN EN ISO 10848-2	$L_{n,f,w}$	72 - 38 dB

Sustainability

Circular Economy	Cradle to Cradle possible
Self-declaration	self-declaration in acc. with ISO 14021 possible
Environmental product declaration	verified EPD in acc. with EN 15804/ ISO 14025 possible

Floor coverings

Suitability of covering	loose-laid coverings
-------------------------	----------------------