



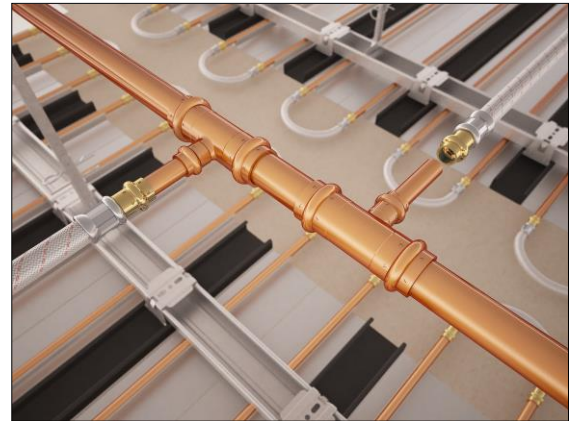
Plafotube® PK

Connecting/Connection hose with press coupling

Product description

Flexible Plafotube® connecting and connection hoses are the most important link between the individual heating and cooling elements. Pressure resistance and oxygen diffusion tightness acc. to DIN 4726 ensure a durable function. The press coupling creates a secure, non-detachable connection – thus, even non-revisable, jointless ceiling systems can be flexibly connected.

- tested pressure resistance and oxygen diffusion tightness acc. to DIN 4726
- secure connection due to press coupling
- flexible connection of Plafotherm® heating/cooling coils
- suitable for non-revisable, jointless ceiling systems



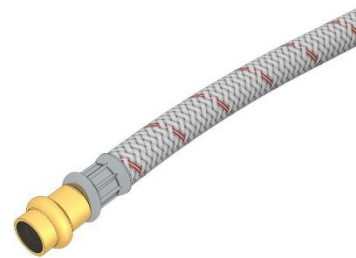
Project solutions

This product data sheet refers to the standard version of the product mentioned above. We would be happy to work with you to find the right solution for your project. Adapted to your building project, you will receive a perfectly matched system. Project-specific constructions and adaptations can be found in the offer documents.

Table of types

Plafotube® 3UE PK

Braid	stainless steel (silver)
Connection	press coupling
Version	straight
Dimension	12 mm
Material	brass



Technical data

Inner tube		plastic corrugated pipe
Nominal width		DN 13
Hose length		0.5 - 10 m
Operating temperature		10°C - 70°C
Operating pressure		max. 20 bar
Tightness	DIN 4726	oxygen diffusion tight



Fire protection

Building material class

Building material class	DIN EN 13501-1	E
-------------------------	----------------	---

Combinable with

Heated and chilled ceilings	<u>Plafotherm® GK HEKDA®</u>
-----------------------------	------------------------------