



## MESHdesign Standard Expanded Metal

Depending on the requirements, we offer the appropriate solution from our standard range of expanded metal meshes. Different mesh sizes and design options are available – of course, your desired MESHdesign surface can also be adapted in colour.

- wide range of standard expanded metal meshes
- diverse design possibilities



### Technical data

Material	steel	
Coating	<u>COLOURline</u> , <u>MOODline</u>	
Definition/Dimensions	<p>As a rule, expanded metal is defined using four dimensions: Example: RM 28 x 10 x 2.5 x 1.5 a) mesh length: 28 mm b) mesh width: 10 mm c) strand width: 2.5 mm d) strand thickness: 1.5 mm</p> <p>Depending on the mesh dimension, expanded metal ceiling elements are available up to a width of 1,250 mm. The design and the stability of the ceiling construction are influenced by the shape and size of the mesh, the material and its thickness and also by the ceiling system itself. Thus, we recommend to check the project-specific feasibility and to make a sample of the mesh.</p>	
Viewing direction	Another important aesthetic criterion is the viewing direction. Depending on the angle of vision, the expanded metal appears either more open or more closed.	<div style="display: flex; justify-content: space-around;"> <div style="text-align: center;"> <p>open</p> </div> <div style="text-align: center;"> <p>closed</p> </div> </div>
Mesh arrangement	To maximise the stability and the deflection properties of expanded metal ceiling panels, the mesh arrangement type A should be chosen.	<div style="display: flex; justify-content: space-around;"> <div style="text-align: center;"> <p>type A</p> </div> <div style="text-align: center;"> <p>type B*</p> </div> </div> <p>*to be clarified project-related</p>



## Acoustics

### Room acoustics

Room acoustics	Equipped with acoustic inlays, expanded metal ceilings achieve high sound absorption values. In case of expanded metal ceilings with open area exceeding 30 %, the mineral wool inlay is decisive as expanded metal is then absolutely sound-permeable.
----------------	---

## Fire protection

### Building material class

Building material class	DIN EN 13501-1	A2 - s1, d0
Building material class	ASTM E 84	Class A

## Durability

Exposure class	DIN EN 13964	A
----------------	--------------	---

## Combinable with

Metal ceilings	<a href="#">LMD-St 213</a> <a href="#">LMD-St 213 BWS</a> <a href="#">LMD-St 214</a> <a href="#">LMD-St 312</a> <a href="#">LMD-St 700 BWS</a>
Heated/Chilled ceilings	<a href="#">Plafotherm® St 213</a>



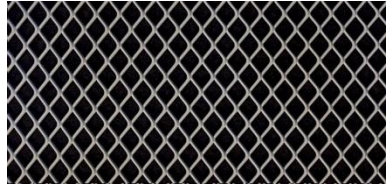
## Surfaces

RM 12.7 x 6 x 2.0 x 1.5	mesh type: diamond mesh open area: 33 % expanded metal thickness: approx. 4 mm mesh length: 12.7 mm mesh width: 6 mm strand width: 2 mm strand thickness: 1.5 mm	
RM 16 x 8 x 2.0 x 1.5	mesh type: diamond mesh open area: 50 % expanded metal thickness: approx. 3.5 mm mesh length: 16 mm mesh width: 8 mm strand width: 2 mm strand thickness: 1.5 mm	
RM 16 x 8 x 2.5 x 1.5	mesh type: diamond mesh open area: 37 % expanded metal thickness: approx. 3.5 mm mesh length: 16 mm mesh width: 8 mm strand width: 2.5 mm strand thickness: 1.5 mm	

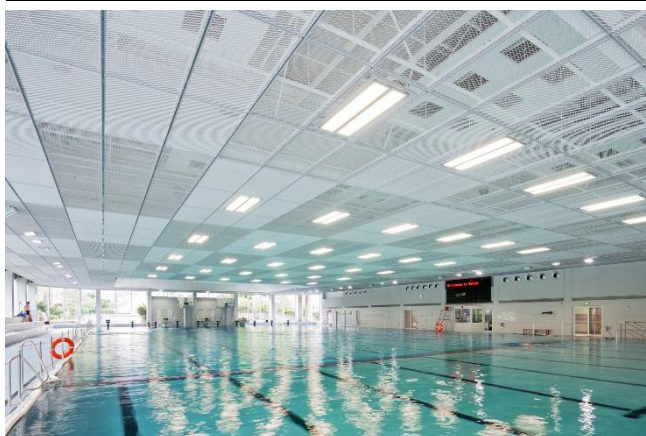
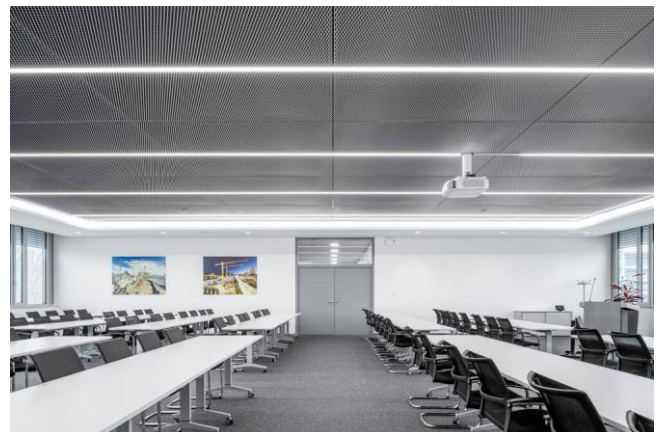
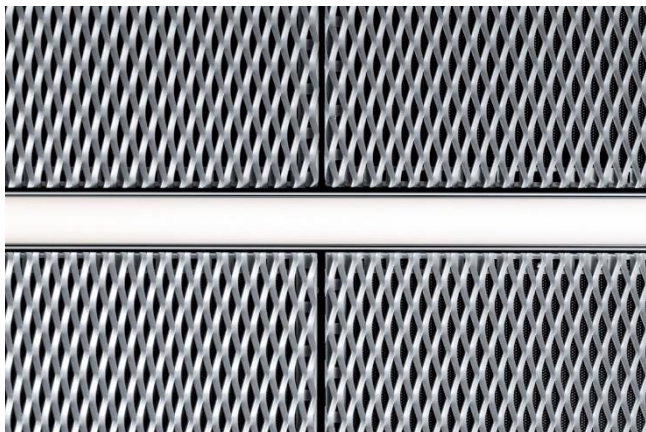


RM 20 x 8 x 2.0 x 1.5	<p>mesh type: diamond mesh  open area: 50 %  expanded metal thickness: approx. 4 mm  mesh length: 20 mm  mesh width: 8 mm  strand width: 2 mm  strand thickness: 1.5 mm</p>	
RM 20 x 10 x 2.0 x 1.5	<p>mesh type: diamond mesh  open area: 60 %  expanded metal thickness: approx. 4 mm  mesh length: 20 mm  mesh width: 10 mm  strand width: 2 mm  strand thickness: 1.5 mm</p>	
RM 28 x 10 x 2.5 x 1.5	<p>mesh type: diamond mesh  open area: 50 %  expanded metal thickness: approx. 5 mm  mesh length: 28 mm  mesh width: 10 mm  strand width: 2.5 mm  strand thickness: 1.5 mm</p>	
RM 28 x 12 x 2.5 x 1.5	<p>mesh type: diamond mesh  open area: 58 %  expanded metal thickness: approx. 5 mm  mesh length: 28 mm  mesh width: 12 mm  strand width: 2.5 mm  strand thickness: 1.5 mm</p>	
RM 30 x 12 x 2.5 x 1.5	<p>mesh type: diamond mesh  open area: 58 %  expanded metal thickness: approx. 4 mm  mesh length: 30 mm  mesh width: 12 mm  strand width: 2.5 mm  strand thickness: 1.5 mm</p>	
RM 42 x 16 x 3.0 x 2.0	<p>mesh type: diamond mesh  open area: 62 %  expanded metal thickness: approx. 6 mm  mesh length: 42 mm  mesh width: 16 mm  strand width: 3 mm  strand thickness: 2 mm</p>	
RM 50 x 25 x 3.0 x 2.0	<p>mesh type: diamond mesh  open area: 76 %  expanded metal thickness: approx. 6 mm  mesh length: 50 mm  mesh width: 25 mm  strand width: 3 mm  strand thickness: 2 mm</p>	
RM 62 x 23 x 3.0 x 2.5	<p>mesh type: diamond mesh  open area: 73 %  expanded metal thickness: approx. 6 mm  mesh length: 62 mm  mesh width: 23 mm  strand width: 3 mm  strand thickness: 2.5 mm</p>	



<p>RM 115 x 40 x 9.0 x 2.0</p>	<p>mesh type: diamond mesh  open area: 55 %  expanded metal thickness: approx. 18 mm  mesh length: 115 mm  mesh width: 40 mm  strand width: 9 mm  strand thickness: 2 mm</p>	
<p>QM 16 x 11 x 1.5 x 1.5</p>	<p>mesh type: square mesh  open area: 73 %  expanded metal thickness: approx. 3.5 mm  mesh length: 16 mm  mesh width: 11 mm  strand width: 1.5 mm  strand thickness: 1.5 mm</p>	
<p>QM 20 x 15 x 2.0 x 1.5</p>	<p>mesh type: square mesh  open area: 73 %  expanded metal thickness: approx. 4 mm  mesh length: 20 mm  mesh width: 15 mm  strand width: 2 mm  strand thickness: 1.5 mm</p>	

## Applications



© Flughafen München



## Project solutions

---

This product data sheet refers to the standard version of the product mentioned above. We would be happy to work with you to find the right solution for your project. Adapted to your building project, you will receive a perfectly matched system. Project-specific constructions and adaptations can be found in the offer documents.