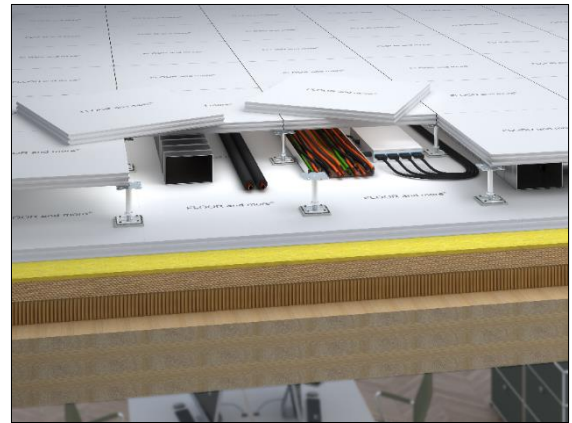


FLOOR and more[®] CLT

Dry hollow floor on cross laminated timber ceiling

The dry hollow floor system FLOOR and more[®] offers stability and state-of-the-art technology. The hollow floor panels consist of fibre-reinforced calcium sulphate. The gluing of the FLOOR and more[®] panels is made with a special tongue and grooving at the edges of the panels which are forming a closed load bearing layer. The substructure consists of height-adjustable zinc-coated steel pedestals from our own production which form the necessary cavity for installations. The hollow floor panels FLOOR and more[®] in combination with a dry mineral fill and a decoupling level create the necessary weighting of the solid wood ceiling, which can optimally be used as substrate for the necessary installation.

- superb walking comfort
- very good building acoustic characteristic values
- high loadability
- non-combustible
- free choice of coverings



Samples for building portfolio

Common Rooms, Facilities for Meetings, Conventions and Conferences, Stage and Studio Rooms, Office buildings, Broadcasting Rooms, Television Studios, Assembly Rooms, Research Rooms, Library Rooms, School of Higher Education, Schools, Banks, Places of Assembly, Gymnasiums, Entrance Areas, Escape Routes, Government Buildings, Court Houses, Hotels and Resorts, Restaurants and Canteens, Residential



Technical data

System weight	approx. 210 kg/m ²	
Panel thickness dry hollow floor	40 mm	
Standard pedestal height	40 - 500 mm	
Pedestal grid	600 mm x 600 mm	
Weighting level	approx. 115 mm	

Statics

Load class	DIN EN 13213	2
Point load (breaking load)	DIN EN 13213	3 kN (6 kN)

Fire protection

Building material class of the dry hollow floor

Building material class	DIN EN 13501-1	A1
Building material class	DIN 4102-1	A2
Designation by the building authorities	DIN EN 13501-1	non-combustible
Designation by the building authorities	DIN 4102-1	non-combustible

Fire resistance of the dry hollow floor

Fire resistance	DIN 4102-2	F30 possible with additional measures
Fire resistance	DIN EN 13501-2	REI30 possible with additional measures REI60 possible with additional measures

Acoustics

Building acoustics

Normalised flanking level difference (depending on additional measures)	DIN EN ISO 10848-2	$D_{n,f,w}$	47 – 58 dB
Weighted sound reduction index (depending on additional measures)	DIN EN ISO 10140-2	R_w	64 dB
Normalised impact sound pressure level (depending on additional measures)	DIN EN ISO 10140-3	$L_{n,w}$	45 – 48 dB
Normalised flanking impact sound pressure level (depending on additional measures)	DIN EN ISO 10848-2	$L_{n,f,w}$	61 – 43 dB

Sustainability (dry hollow floor)

Circular Economy	Cradle to Cradle Certified® Silver
Self-declaration	self-declaration in acc. with ISO 14021
Environmental product declaration	verified EPD in acc. with EN 15804 / ISO 14025

Floor coverings

Suitability of covering	elastic coverings, loose-laid tiles, textile coverings, parquet (only 2-layer parquet bonded or floating installed parquet permissible; no solid wood planks)
-------------------------	---