

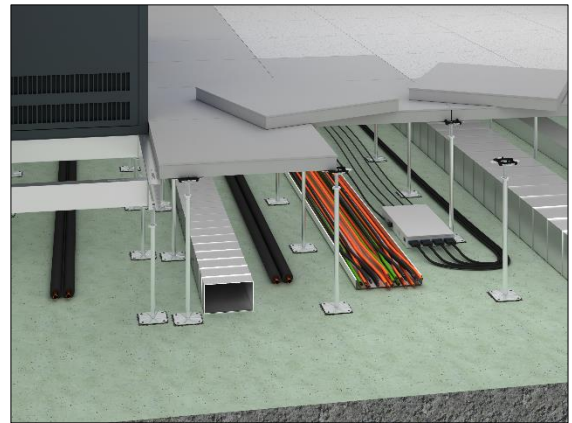


## PRODATA

### Aluminium raised floor for highest requirements

The raised floor system PRODATA is a high quality aluminium die cast panel with an orthotropic design and is produced with maximum precision and accuracy. Its high load-bearing capacity and its abrasion resistance when used for ventilation purposes means that PRODATA is ideal for use in all clean rooms and other areas of application requiring high technical performance. There is an option to order these panels with factory-bonded floor covering or coating, which can be conductive if required. The substructure consists of height-adjustable zinc-coated steel pedestals from our own production which form the necessary cavity for installations and gaskets for sound decoupling.

- highest precision
- aero-dynamically non-abrasive
- corrosion resistant
- anti-magnetic
- excellent electrostatic discharge
- high load-bearing capacity



### Samples for building portfolio

Data Centres, Utility Rooms, Assembly Rooms, Broadcasting Rooms, Television Studios, Common Rooms, Offices, Stage and Studio Rooms, Clean Rooms, Power Plants, Production Facilities, Laboratories and Research Facilities, Research Rooms, Library Rooms, Laboratories, Entrance Areas, Court Houses, Government Buildings

#### Technical data

Weight	27 - 42 kg/m <sup>2</sup>	
Panel thickness	52 - 60 mm	
Standard pedestal height	50 - 2,000 mm	
Pedestal grid	600 mm x 600 mm	
Earth resistance	≥ 1 x 10 <sup>4</sup> Ω	

#### Statics

Load and deflection class	DIN EN 12825	6B
Point load (breaking load)	DIN EN 12825	7 kN (14 kN) - 10 kN (20 kN)

#### Fire protection

##### Reaction to fire performance of the carrier panel

Reaction to fire performance	DIN 4102-1	A1
Designation by the building authorities	DIN 4102-1	non-combustible

#### Floor coverings

Suitability of covering	PVC, conductive or non-conductive powder coating	
-------------------------	--	--