

Building
New Solutions

Business division
Interior Fit-Out and Furnishings

 **Lindner**

Aesthetic Fire Protection

FIREwood

FIREwood

Real Wood Veneered Calcium Sulphate Panel

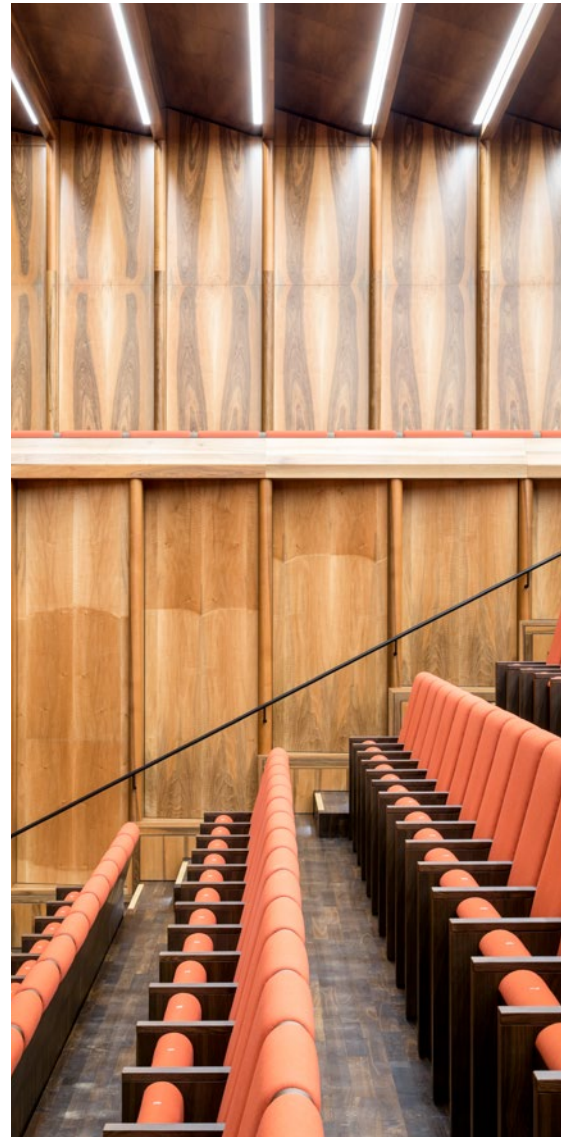
Real-wood-veneered, non-combustible and sound-absorbing – the FIREwood calcium sulphate panel is the perfect solution for high-quality wall and ceiling claddings in escape and rescue routes, necessary corridors, stairwells and assembly areas. The composite material with real wood veneer easily manages the balancing act between real wood surface, fire protection and good acoustics. The choice of veneer from all natural wood species is entirely up to the customer. The different joining techniques – butted, planked or slid – allow a high degree of individual design.

- very good fire protection properties
- sound-absorbing due to perforation or grooving
- great design freedom due to freely selectable veneer types
- extremely robust – 23 kg/m² (19 mm)
- large formats possible, up to 1,220 x 2,550 mm
- particularly dimensionally stable and resistant to bending
- extremely low swelling and shrinkage behavior





Württembergisches Staatstheater Stuttgart (State Theater), Germany
© Brigida González



Carmen-Würth-Forum, Künzelsau, Germany

Focus on Fire Protection

Safe, Stable and Non-combustible

The real-wood-veneered panels with building material certification in composite are used as system-independent, decorative wall and ceiling claddings in escape and rescue routes, necessary stairwells and in assembly areas. The

non-combustible panels (A2 in composite, according to DIN 4102) are produced in-house. In addition to the non-combustible version, they are also available in a flame resistant version (B - s1, d0 according to DIN EN 13501-1).





Acoustic Performance

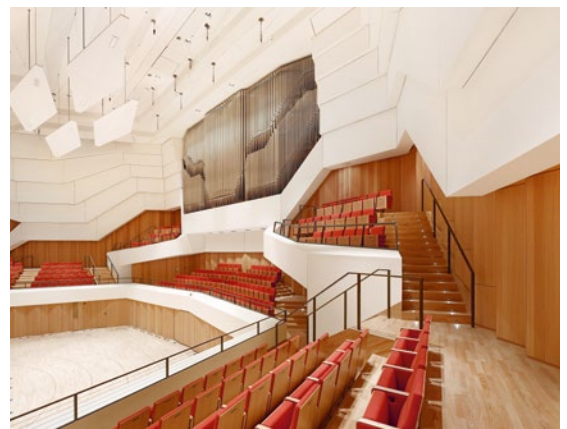
Small Cause for a Great Effect

With the appropriate perforation or grooving, the panel in the FIREwood acoustic version offers an excellent room acoustic effect. The perforation pattern depends not only on the required sound absorption level, but also on the

format of the panel and the type of fastening. The object-related construction is planned especially by experts. This ensures that the design, building physics and construction requirements are optimally coordinated.



State Parliament Hanover, Germany
© Joachim Grothus



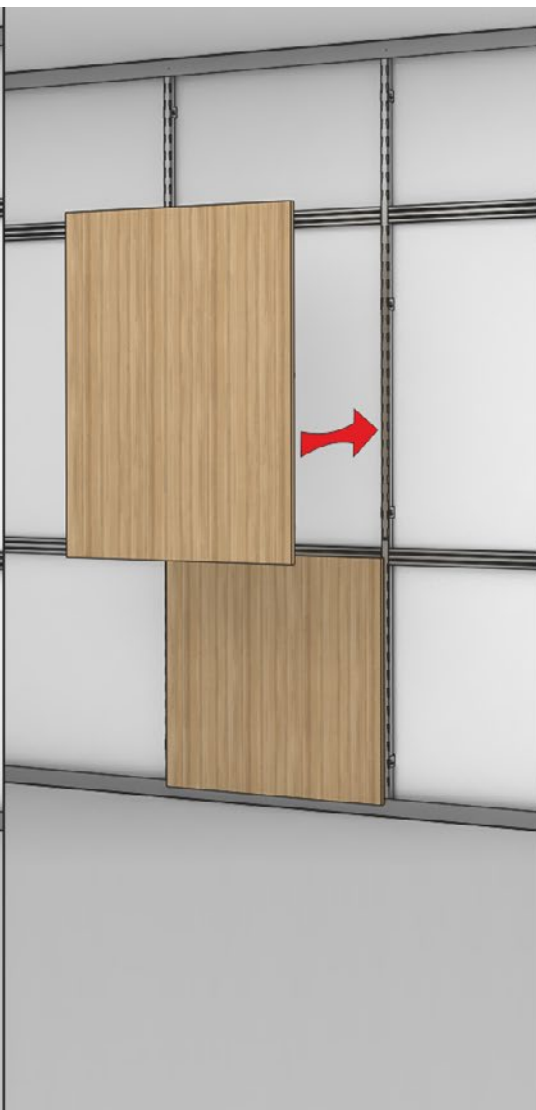
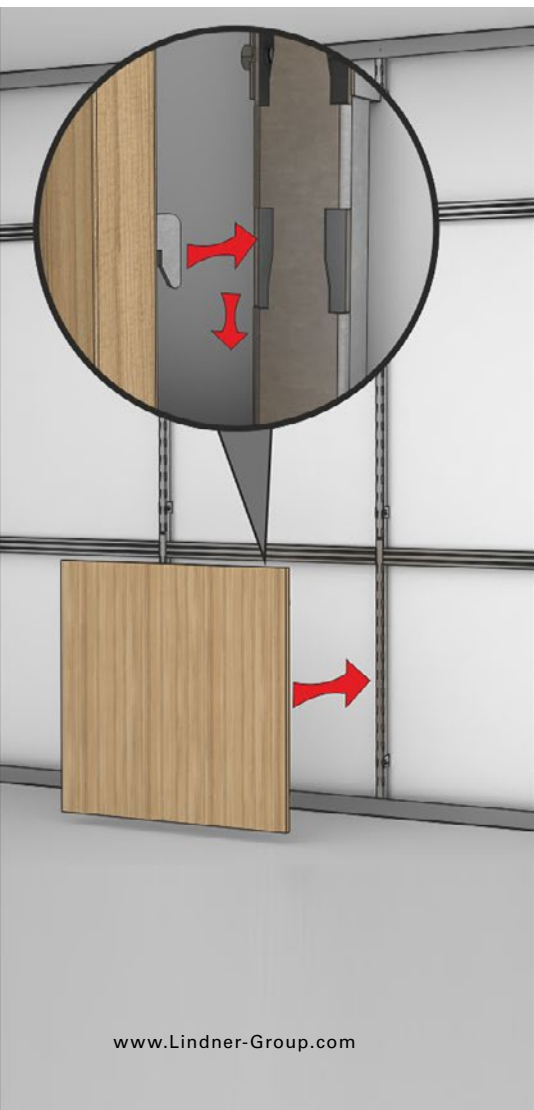
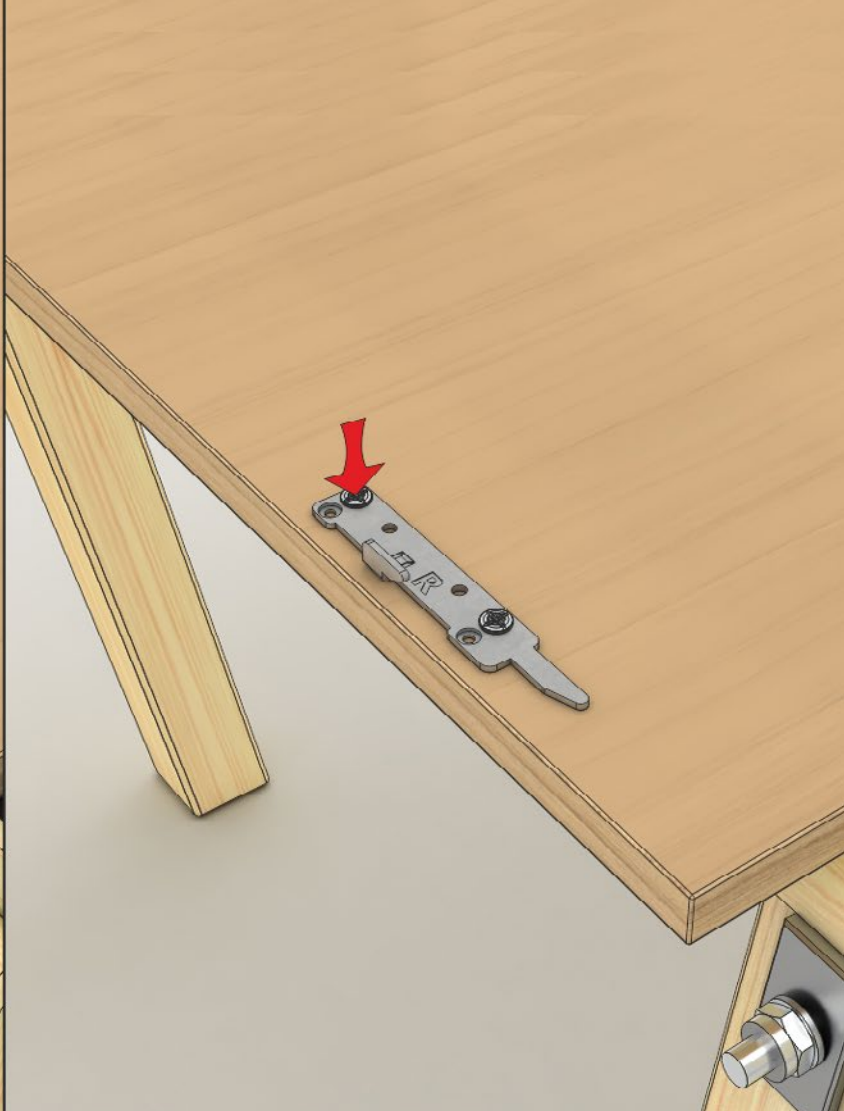
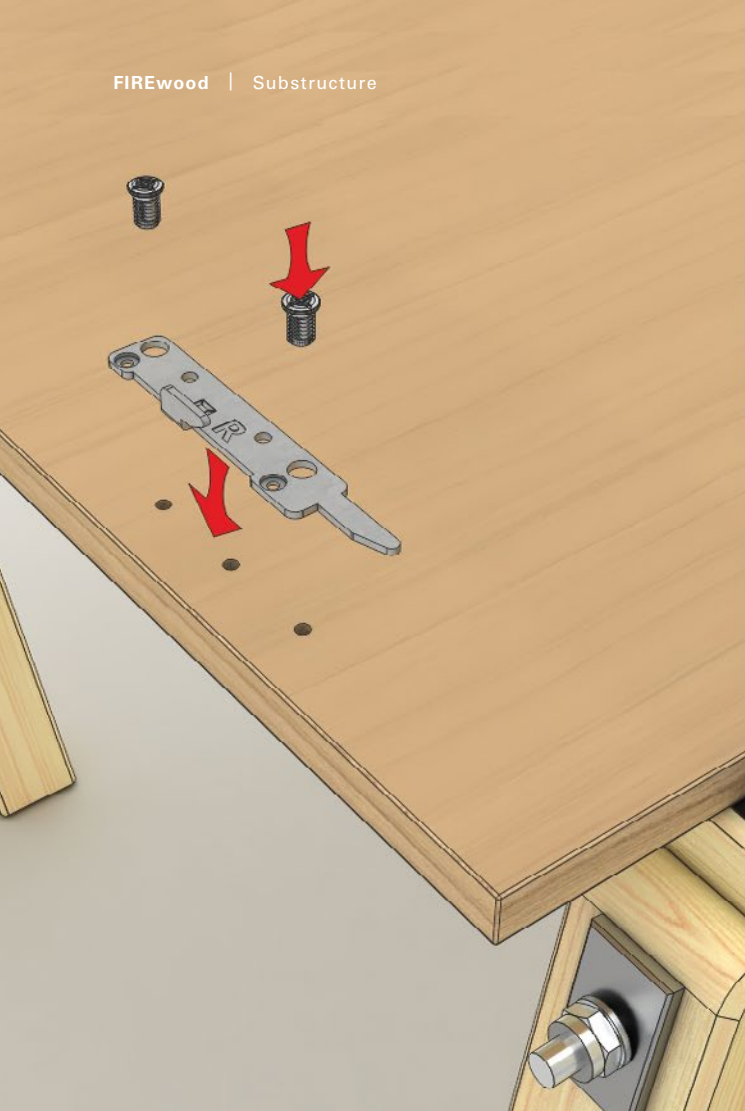
Kulturpalast Dresden, Germany



The Substructure

Flexible and Functional

FIREwood panels are system-independent and can therefore be attached to various substructures. In general, suspension systems are used for fastening, which are attached directly to the unfinished wall or to the substructure in front of it.



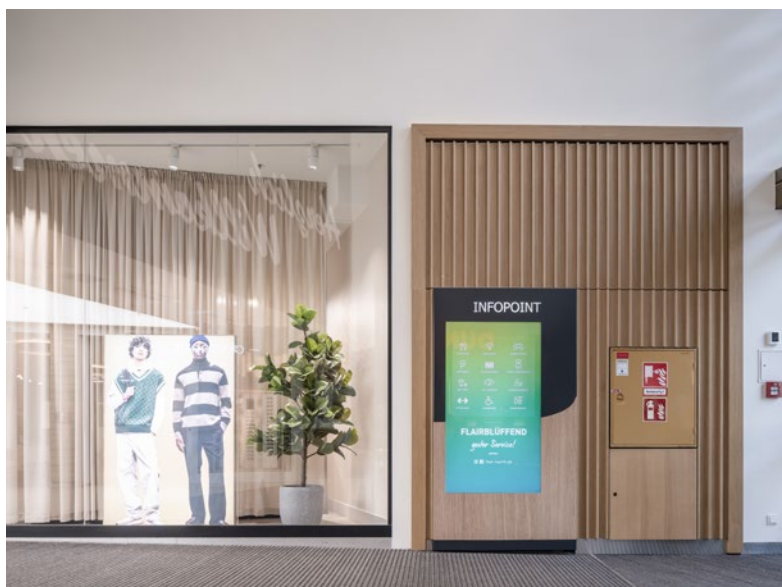
Geometric Variety

Slats for Walls or Ceilings

FIREwood panels are not only available as classic rectangular or square panels, but also as lamellas in various shapes, lengths and thicknesses, thereby meeting the architectural spirit of time in interior design.



FLAIR Fuerth,
Germany









Kulturpalast Dresden,
Germany



Kulturpalast Dresden, Germany

Homogeneous Room Concept

Perfect Harmony from the Wall to the Ceiling

FIREwood can be used not only for cladding walls and ceilings in necessary corridors: The real wood veneer of the panels can also be used for installed door elements and furnishings. Ventilation slots and recesses for ceiling lights

or loudspeakers are integrated into the room design in a visually appealing way. Since the panels are prefabricated in the factory, manual processing on the construction site is no longer necessary.



Detailed Solutions

Access Areas

- For large-area wall claddings, the “planked” veneer arrangement is recommended in order to obtain a surface that is as homogeneous as possible.
- Grooved panels support the room acoustics, e.g. in recreation rooms, while complying with the prescribed fire protection regulations.
- The selective use of FIREwood visually enhances access areas as well as passageways.



Brehmstraße,
Vienna, Austria

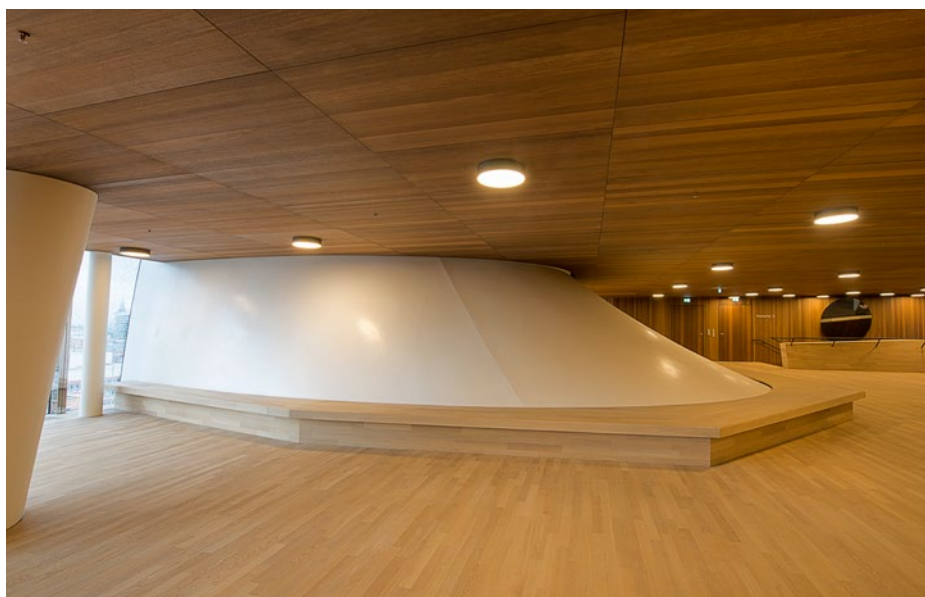


Munich Re,
Munich, Germany

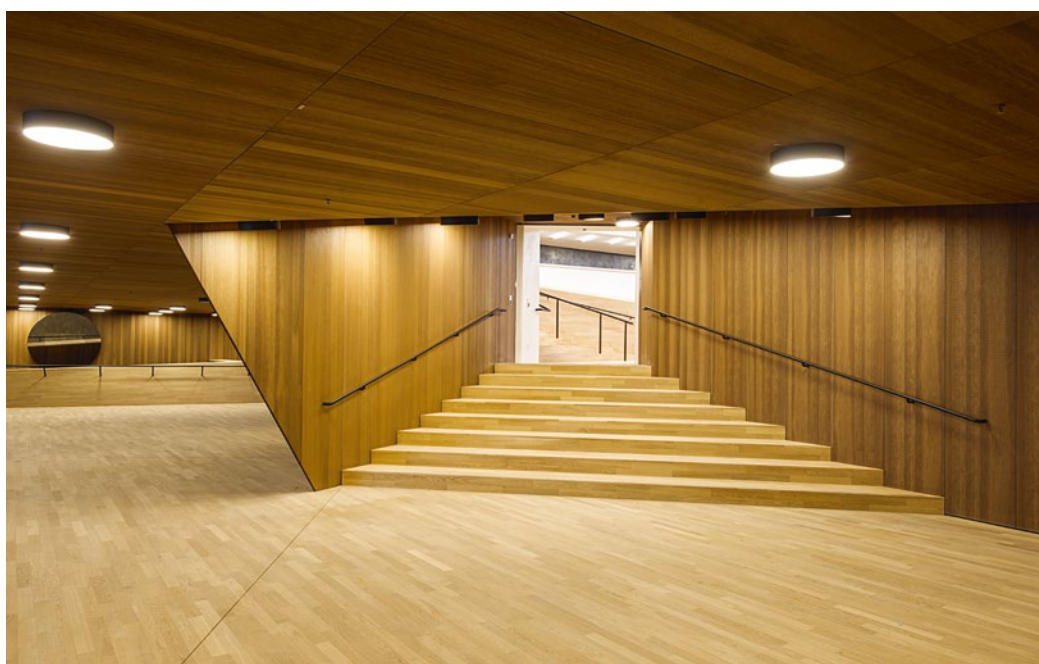
Detailed Solutions

Concert and Event Halls

- In concert halls, wall surfaces can be both sound-reflecting and sound-absorbing. The installed elements do not have to form on a level; relief-like surfaces can also be implemented.
- Not only acoustically pleasing: warm wood tones create a special room atmosphere – including better acoustics and fire protection.



Elbphilharmonie,
Hamburg, Germany



Elbphilharmonie,
Hamburg, Germany



KPTN (HC34) Hamburg,
Germany



Kulturpalast Dresden, Germany

Detailed Solutions

Common Rooms

- Different shapes and sizes create a varied, harmonious overall appearance. FIREwood panels can also be designed as rounded elements.
- Shopping in style: The real wood veneered surface gives the FLAIR Fürth shopping centre a sophisticated ambience.



FLAIR Fuerth,
Germany

FLAIR Fuerth,
Germany







From Arnstorf All Over the World

Add.Vantage

Over time, the Lindner Group has developed into a technically strong, solution-oriented and reliable partner with an economically solid basis. Our comprehensive product and service portfolio for building envelopes, interior fit-out and insulation in almost all fields of application is second to none.

True to our motto "Rethinking Spaces" we develop perfectly customised and yet versatile solutions and concepts for your building project.

As a 100% family-owned company, we attach particular importance to our environment. With innovative concepts such as Cradle to Cradle Certified®, low-emission products and well thought-out room concepts, we create Add.Vantage for people and their environment. As a service provider and employer we place people at the centre of our activities. Our customers notice this too: We enjoy our work, have conviction in what we do and are proud of what we can achieve.

Interior Fit-Out and Furnishings

Lindner SE | Interior Fit-Out and Furnishings is a specialist for demanding interior design projects: from hotels and resorts to ship interiors, concert halls, libraries or prestigious government buildings. Starting with the planning up to project management and installation, Lindner carries out large construction phases completely under its own responsibility and manufactures project-related solutions for interior design in its own production facilities, including high-quality interiors, wooden object doors and the certified product lines FIREwood and COMP+.



Lindner Group Headquarters
Arnstorf, Germany

Lindner Group | Interior Fit-Out and Furnishings
Bahnhofstrasse 29 | 94424 Arnstorf
objektdesign@Lindner-Group.com | www.Lindner-Group.com

Cover: Elbphilharmonie Hamburg, Germany