

# BFG Gent

Gent, Belgium





# Project Description

Lindner insulated the entire blast furnace gas power plant with a surface of 29,000 square metres. Our insulation works included the heat and sound insulation of flue gas-, hot air-, BFG-channels, boiler, boiler porches, as well as all tubes and components with wire netting mats and galvanized sheet metal plates.

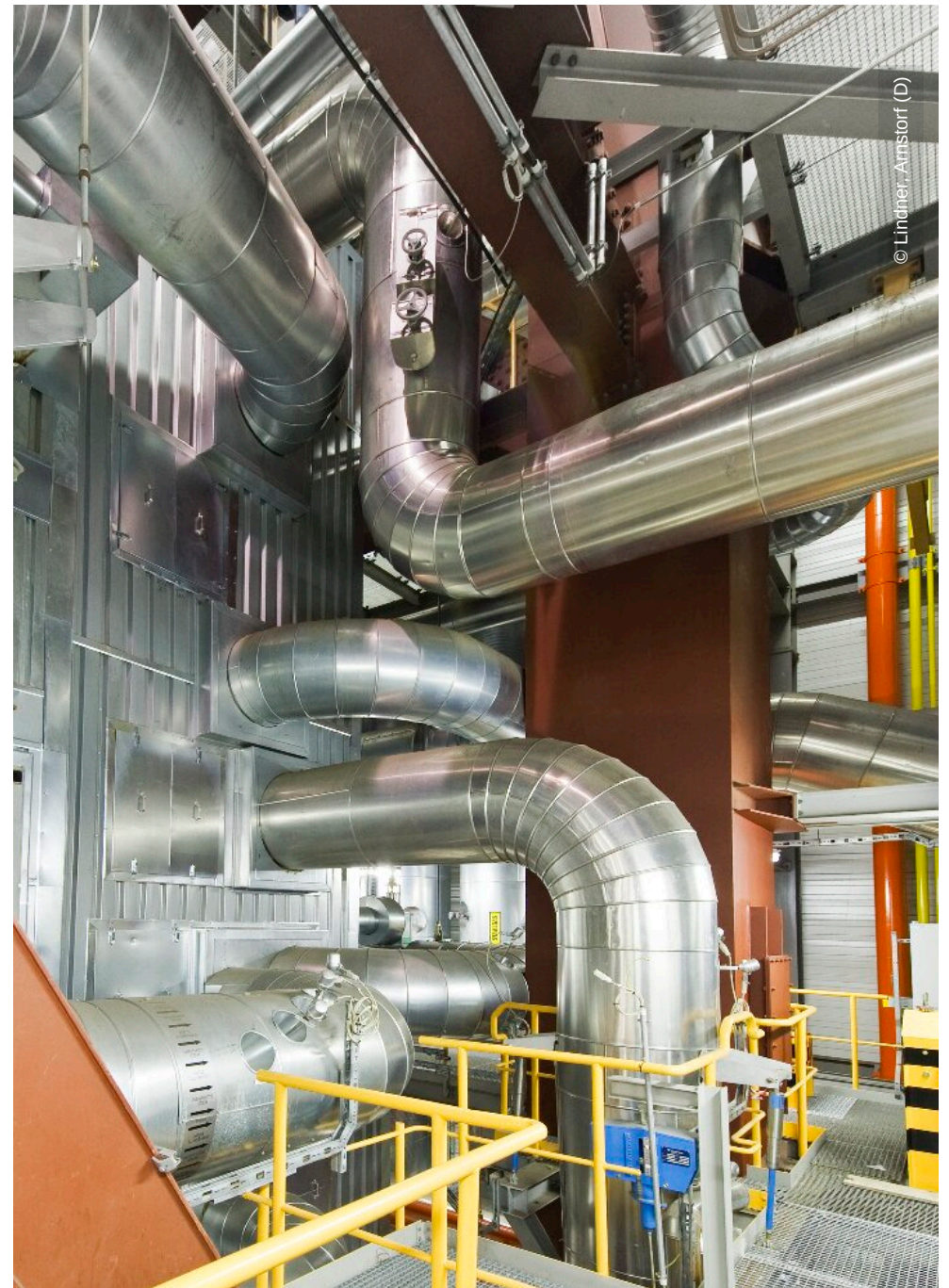
## General

Building Type	Power Plants
Company Division	Lindner Isoliertechnik &
Completion	2009 - 2010
Client	Electrable
Architect	Hitachi Power Europe GmbH

## Completed Works

- Insulation Engineering

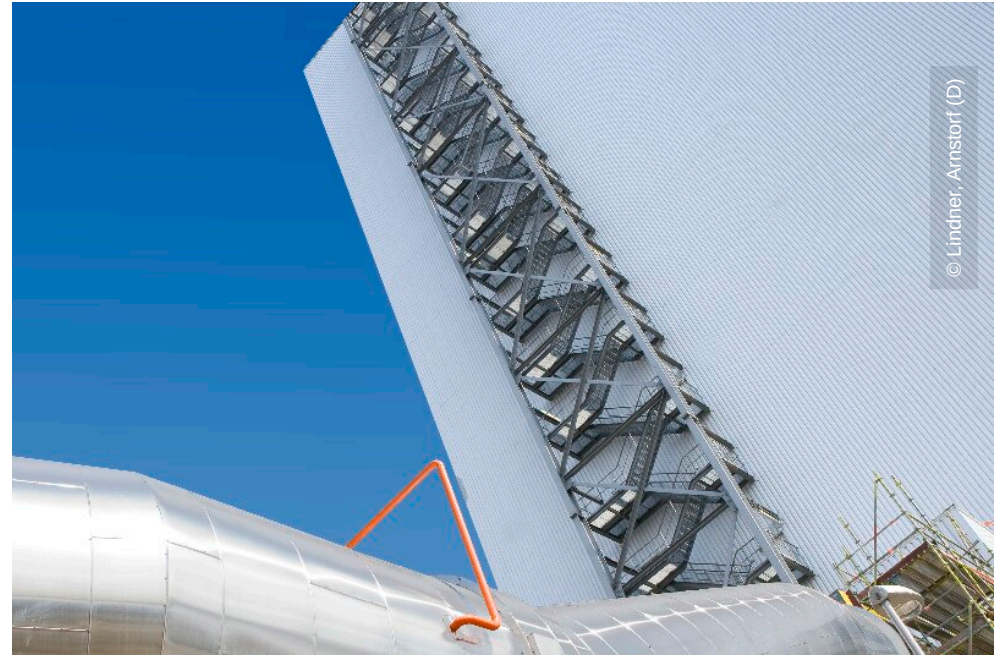








© Lindner, Arnstorf (D)



© Lindner, Arnstorf (D)