

Baufeld Nord 1

Frankfurt, Germany





Project Description

Baufeld Nord 1 is the first office building erected in Frankfurt's Europe district. The sustainability of Baufeld Nord 1 is supported by the thermal function of four green atriums. The Lindner Group provided unitized curtain walls at the main envelope and the atrium, glass facade at the entrance hall and the lift, as well as at the north side of the building. A highlight of the building is a movable terrace roof.

General

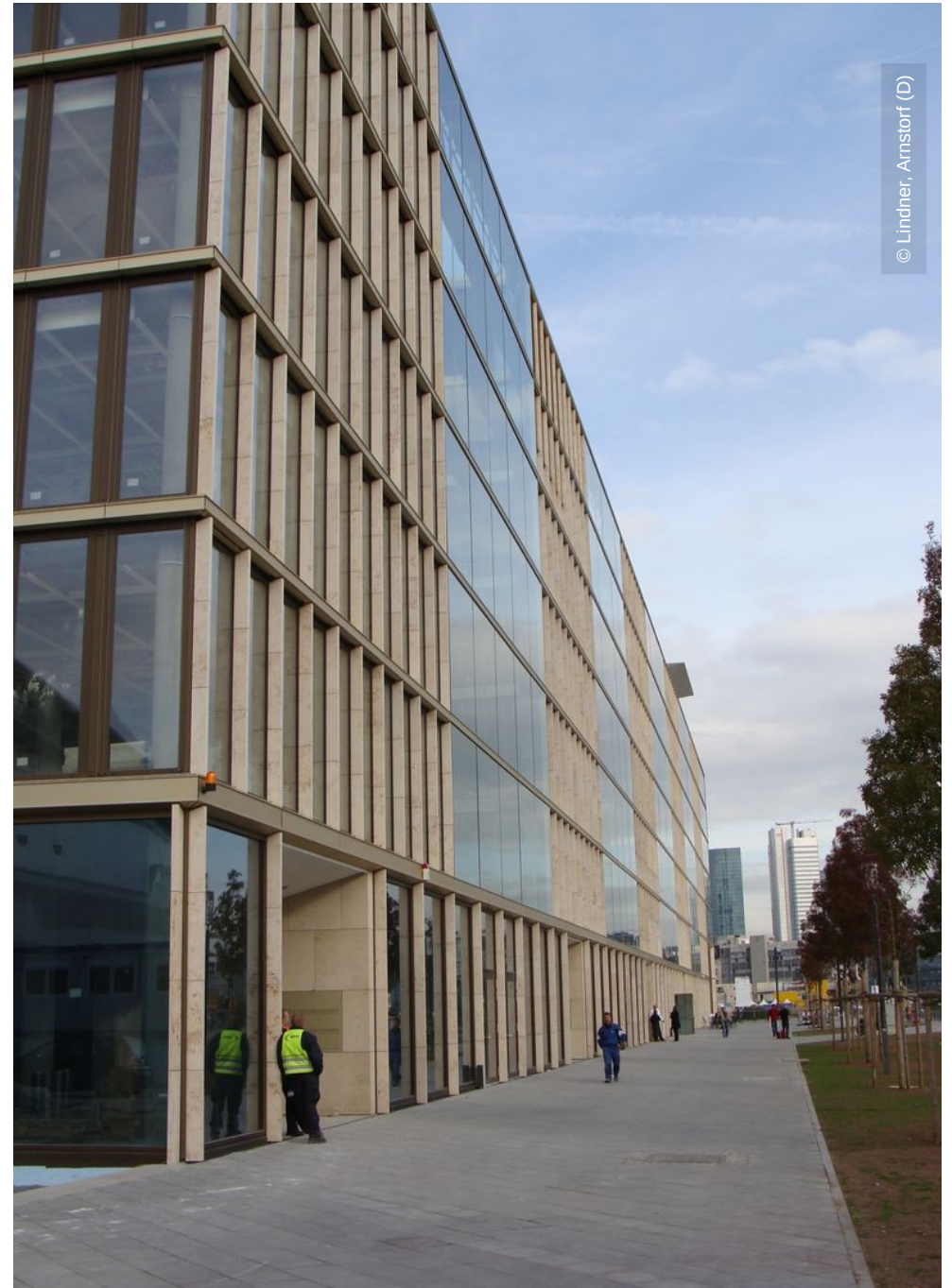
Building Type	Office buildings
Company Division	Lindner Fassaden GmbH,
Completion	2009 - 2010
Client	Vivico Frankfurt Nord 1 Projekt GmbH & Co. KG
Architect	schneider + schumacher Architekturgesellschaft mbH

Completed Works

- **Facades**



© Lindner, Arnstorf (D)



© Lindner, Arnstorf (D)

