

# DATEV

Nürnberg, Germany







## Project Description

The IT service provider and software developer DATEV eG extended its capacities with the new office building "IT-Campus 111". The building features 1,800 workplaces and 150 places of retreat, together with modern conference and meeting rooms. The architecture and equipment of the office areas support both internal communication and concentrated working all the while creating ideal overall conditions for work routines in modern software development.

Lindner's performances play a crucial role in the interior design concept. In order to create the aforementioned spaces for concentrated working and meetings, Lindner partition systems and doors were installed. Designed as the room-in-room system Lindner Cube, these partitions excel at creating a pleasant room atmosphere in open-plan offices. This effect is enhanced by Lindner canopy ceilings with integrated heating and cooling technology, installed in meeting rooms.

## General

<b>Building Type</b>	Office buildings
<b>Company Division</b>	Lindner SE   Heating and Cooling, Lindner SE   Partitions
<b>Completion</b>	2014 - 2015
<b>Client</b>	DATEV eG
<b>Architect</b>	Boesel Benkert Hohberg Architekten

## Completed Works

- **Ceilings**  
Heated and Chilled Canopy Ceilings
- **Partitions**  
Partition Systems Glass  
Doors for Partition Systems  
Partition Systems Full Panel  
Lindner Logic 100 Timber
- **Room-in-Room**  
Lindner Cube solo





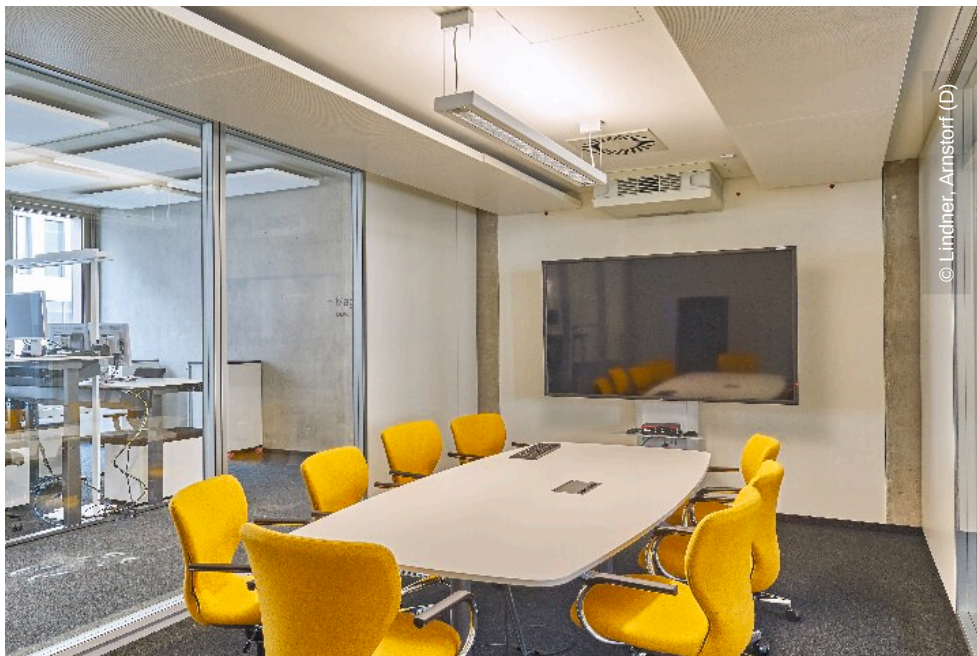




© Lindner, Arnstorf (D)



© Lindner, Arnstorf (D)



© Lindner, Arnstorf (D)



© Lindner, Arnstorf (D)