



## FLOOR and more<sup>®</sup> sonic

### Dry Hollow Floor for Seepage Ventilation

The dry hollow floor system FLOOR and more<sup>®</sup> sonic is used for the climatic optimisation of rooms. The perforated hollow floor panels type sonic consist of fibre-reinforced calcium sulphate. The gluing of the FLOOR and more<sup>®</sup> panels is made with a special tongue and grooving at the edges of the panels which are forming a closed load bearing layer. The substructure consists of height-adjustable zinc-coated steel pedestals from our own production which form the necessary cavity for installations.

- very high air flow rate
- invisible seepage ventilation
- invisible perforation

#### Examples for areas of application

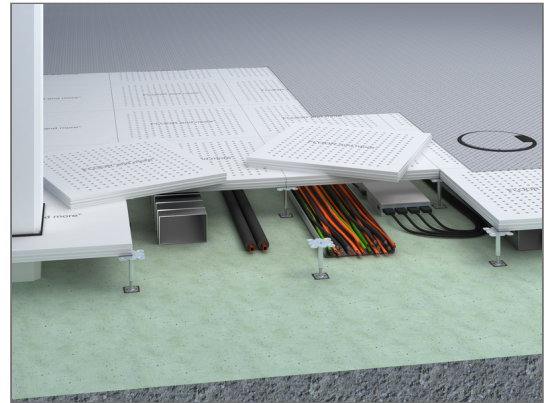
**Public Areas:** Entrance Areas, Escape Routes

**Work:** Common Rooms, Facilities for Meetings, Conventions and Conferences, Stage and Studio Rooms, Office buildings, Broadcasting Rooms, Television Studios, Utility Rooms, Assembly Rooms

**Education:** Library, Research Rooms, Schools, Higher education institutions and universities

**Businesses, Recreation and Culture:** Cinema and multiplex cinemas, Concert Halls, Theatres and Opera Houses, Museums and Exhibitions, Places of Assembly

**Public Institutions:** Courts and prisons, Government and municipal buildings



#### Technical details

##### Dimensions

|                          |                           |
|--------------------------|---------------------------|
| Panel thickness          | 40 - 41 mm                |
| Standard pedestal height | 40 - 2000 mm              |
| Pedestal grid            | 599 mm x 599 mm           |
| Weight                   | 42 - 52 kg/m <sup>2</sup> |

#### HVAC

##### Ventilation

|                    |                              |
|--------------------|------------------------------|
| air flow           | 192 - 1294 m <sup>3</sup> /h |
| Free cross section | 4 - 24 %                     |
| Hole diameter      | 8 mm, 10 mm, 13 mm           |

#### Static

##### Statics

|                            |          |                                     |
|----------------------------|----------|-------------------------------------|
| Load Class                 | EN 13213 | 1 - 5                               |
| Point load (breaking load) | EN 13213 | 2 kN (4 kN) - 5 kN (10 kN)          |
| Seismic safety             |          | possible according to DIN EN 1998-1 |



## Fire protection

### Building material class


|                                     |            |                      |
|-------------------------------------|------------|----------------------|
| Building material class             |            | of the carrier panel |
| Building material class             | EN 13501-1 | A1                   |
| Designation by building authorities | EN 13501-1 | non-combustible      |

## Sustainability

### Declarations

|   |   |
|---|---|
| EPD (Environmental Product Declaration) | EPD according to EN 15804 / ISO 14025 upon request  |
| Circular Economy                        | Cradle to Cradle upon request   |
| Sustainable forestry                    | Our products can be supplied FSC™-certified (chain of custody certification) and fulfil all the necessary requirements. Certificate number: TUEV-COC-000515 Licence number: FSC-C119815 |
| Product Self-Declaration                | Self-declaration according to ISO 14021 upon request  |

### Evidence

|                         |  |
|-------------------------|--|
| Green Level Certificate | <div>High </div> <p><b>Circularity:</b> Some of the components can be reused/refurbished</p> <p><b>Life Cycle Assessment:</b> Life Cycle Assessment according to DIN 14067 (Product Carbon Footprint) on request</p> <p><b>Cradle to Cradle Certified®:</b> no C2C Certified® label available</p> |
|-------------------------|--|

## Coverings

### Coverings

|                         |                                  |
|-------------------------|----------------------------------|
| Suitability of covering | suitable loose-laid carpet tiles |
|-------------------------|----------------------------------|