

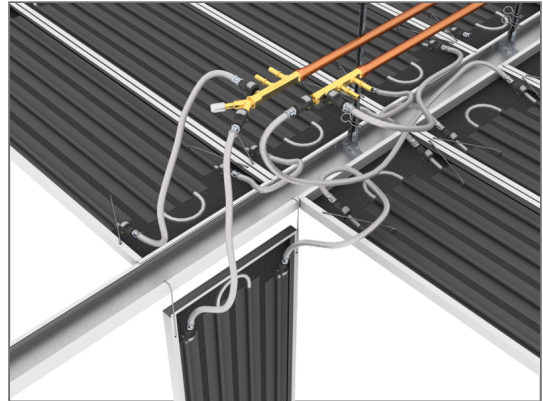


Fittings

Distribution system

Different fittings such as system distributors are available in the distribution system that is perfectly adapted to Plafotherm® heated/ chilled ceilings. Various combination options offer you the possibility to expand the distributor to up to ten outlets.

- perfectly adapted to Plafotherm® heated/chilled ceilings
- expansion of the distribution system to up to ten outlets



Variants

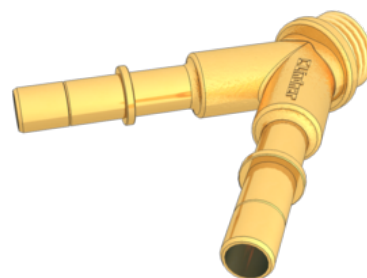
System distributor

- Dimension: ½" external thread x 3* MQC 12 mm
- Material: brass



Y-system distributor

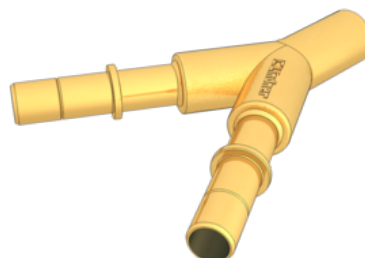
- Dimension: ½" external thread x 2* MQC 12 mm
- Material: brass





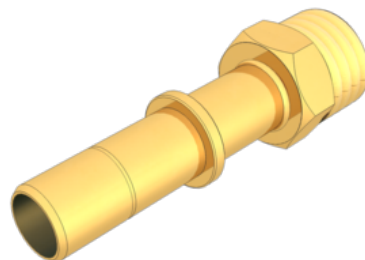
Y-system distributor

- Dimension: 18 mm x 2* MQC 12 mm
- Material: brass



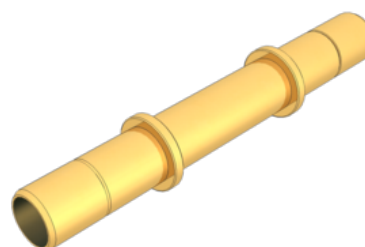
Screw-in pipe end

- Dimension: 1/2" external thread x 1* MQC 12 mm
- Material: brass



Double nipple

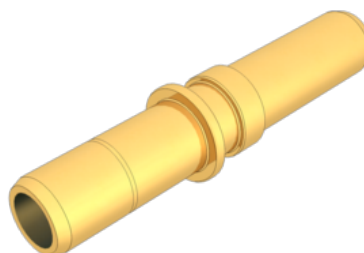
- Dimension: 2* MQC 12 mm
- Material: brass (alternative copper or stainless steel)



Transition fitting

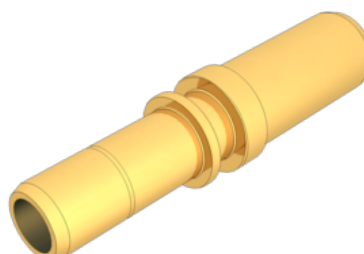


- Dimension: 12 mm x 1* MQC 12 mm
- Material: brass



Transition fitting

- Dimension: 15 mm x 1* MQC 12 mm
- Material: brass



T-fitting

- Dimension: 1/2" x 3/4" x 1/2" internal thread
- Material: brass



Transition fitting

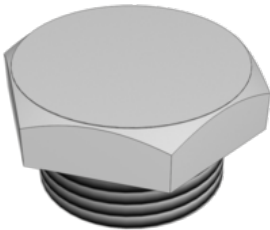


- Dimension: 12 mm x 1* MQC 12 mm
- Material: copper



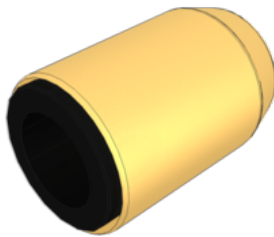
Threaded plug self-sealing

- Dimension: 1/2" external thread
- Material: brass, nickel-plated



Closing cap

- Dimension: 12 mm
- Material: brass



Fire protection

Building material class

| | | |
|-------------------------|------------|----|
| Building material class | EN 13501-1 | A1 |
|-------------------------|------------|----|



Combinable Systems

Combinable Systems

Ceilings

Plafotherm® B 100 - Linear Heated and Chilled Post Cap Ceiling
 Plafotherm® B 100 SD - Linear Heated and Chilled Post Cap Ceiling, Longitudinally Sound-Reduced
 Plafotherm® B 110 - Heated and Chilled Post Cap Ceiling with Cross Noggins
 Plafotherm® B 147 SD - Heated and Chilled Post Cap Ceiling Concealed, Longitudinally Sound-Reduced
 Plafotherm® E 200 - Heated and Chilled Hook-On Ceiling
 Plafotherm® E 210 - Heated and Chilled Hook-On Ceiling with Butt Joints
 Plafotherm® E 213 - Heated and Chilled Hook-On Ceiling with Accentuated Joints
 Plafotherm® E 214 - Heated and Chilled Hook-On Ceiling with Open Joints
 Plafotherm® E 312 - Heated and Chilled Hook-On-Swing-Down-Slide Corridor Ceiling
 Plafotherm® DS 315 - Heated and Chilled Canopy Ceiling without Frame
 Plafotherm® DS 320 - Heated and Chilled Canopy Ceiling in Filigree Optics
 Plafotherm® L 608 - Heated and Chilled Metal Baffle Ceiling, Hook-On/Slide baffle, two-piece
 Plafotherm® L 609 - Heated and Chilled Metal Baffle Ceiling, Hook-On/Slide baffle, one-piece
 Plafotherm® St 213 - Heated and Chilled Expanded Metal Ceiling with Accentuated Joints
 Plafotherm® KN - Convection Element
 Plafotherm® KN eco - Convection Element Economy
 Plafotherm® GK HEKDA® - Heated and Chilled Plasterboard Ceiling
 Plafotherm® DS TAS - Hybrid Heated and Chilled Canopy Ceiling
 Plafotherm® B/E AirHybrid - Hybrid Ventilation Element in Metal Ceiling
 Plafotherm® DS AirHybrid - Hybrid Ventilation Element in Canopy Ceiling