

A modern office hallway with a minimalist design. The walls are a mix of light wood and grey concrete. The ceiling features long, recessed linear lights and two large, glowing circular pendant lights. On the left, a long row of light wood doors is visible. In the foreground, a lounge area includes a tan armchair, a grey armchair, and a black and white cylindrical ottoman. In the background, a glass-walled office space contains a wooden cabinet with a TV, a glass display case labeled 'FELFEL', and a grey storage unit.

WESTOFFICE, TENANT FIT-OUT VERSICHERUNGSGESELLSCHAFT ZÜRICH

ST. GALLEN, SWITZERLAND



Description:

The Westoffice in St. Gallen, Switzerland, provides commercial and office space. As the main tenant, the Zürich Versicherungs-Gesellschaft AG combines its regional headquarters, the regional general agency and the local Help Point under one roof, there. In a future-proof environment including desk sharing and team zones, employees can work both individually and in larger groups. All meeting rooms are equipped with state-of-the-art technology. In addition, the concept is paying increased attention to sustainability: A photovoltaic system on the roof covers about 60 % of the energy needs. Moreover, employees can charge their vehicles at an E-Car and E-Bike charging station.

Lindner realised the tenant fit-out for Zürich Versicherungs-Gesellschaft AG with partition wall, door and room-in-room systems: the full panel partition system Lindner Logic Timber – clad with perforated real wood silver fir veneer – ensures good acoustics. It is complemented by Lindner Life Stereo 125 glass partitions framed by powder-coated aluminium profiles in black and by profiles veneered with real wood – also in silver fir. The glass partition wall system is Cradle to Cradle® Silver certified and thus takes account of the sustainability concept. Wooden door elements veneered with silver fir and supplemented by wooden block frames provide access to the different areas and round off the clear visual impression. A total of 18 identical Lindner Cubes offer additional space for meetings or concentrated work – including heated/chilled ceilings, optimal lighting and acoustics as well as copying areas at the front of the outer wall.

General:

| | |
|-------------------|--------------------------------------|
| Concept/Product: | Tenant fit-out, Green Building |
| Building Type: | Office buildings |
| Client: | Granova Group |
| Tenant: | Zürich Versicherungs-Gesellschaft AG |
| Company Division: | Lindner SE Opfikon Branch |
| Completion: | 2020 - 2021 |



Completed Works:

Glass partitions

Lindner Life Stereo 125

Room-in-room systems

Lindner Cube

Partitions

Timber partition - Lindner Logic

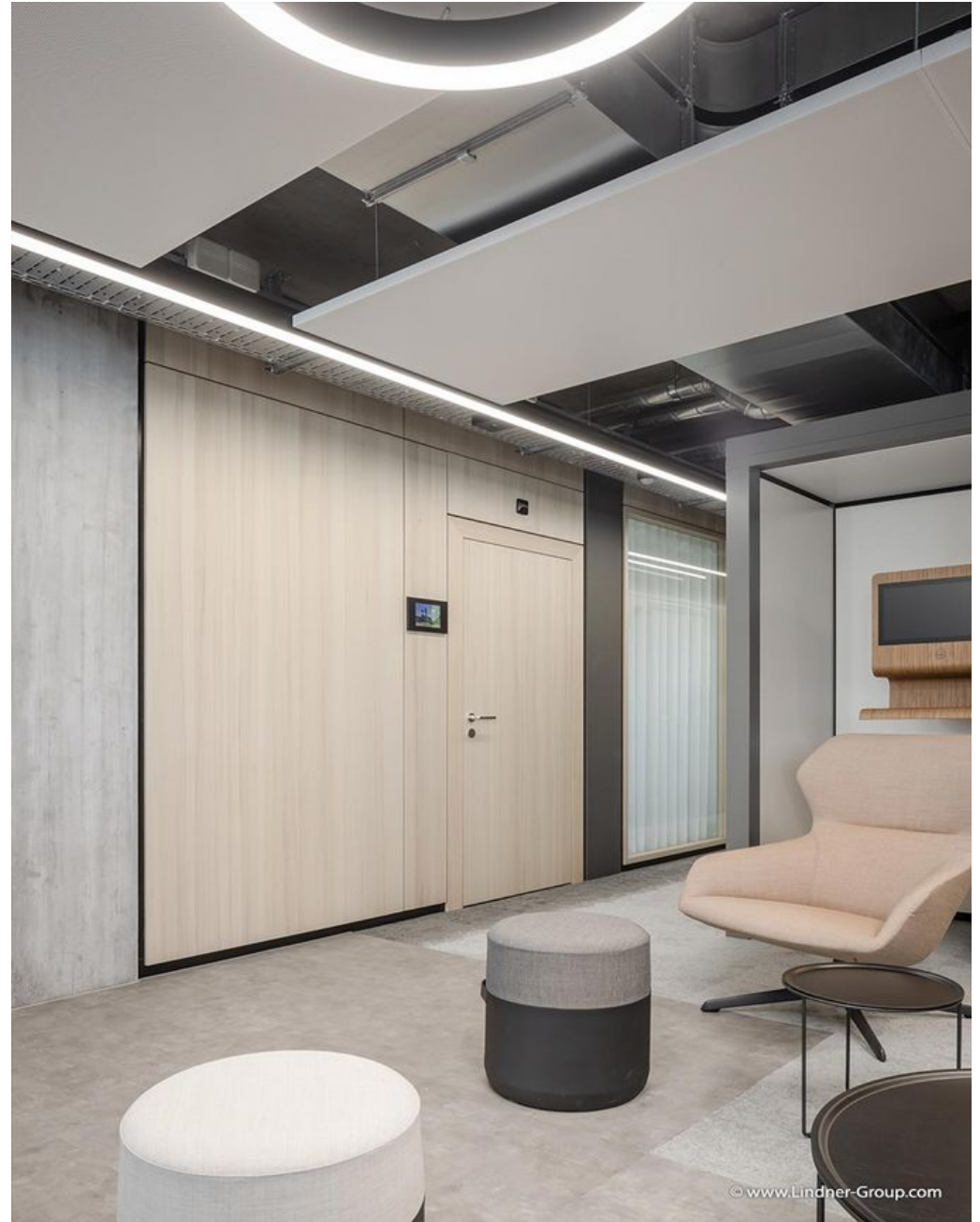
Doors

Door Frames











© www.Lindner-Group.com