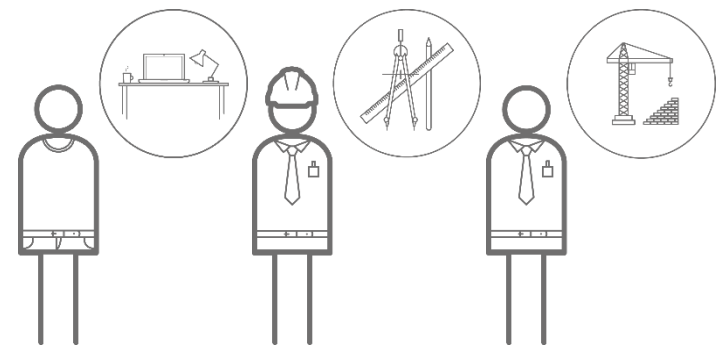




**ADD.VANTAGE**  
**FLEXIBILITY**



**„LET US BECOME FLEXIBLE TOGETHER. “**







**ADD... | FLEXIBILITY**  
**OFFICE PLANNING WITH THE LEGO PRINCIPLE**

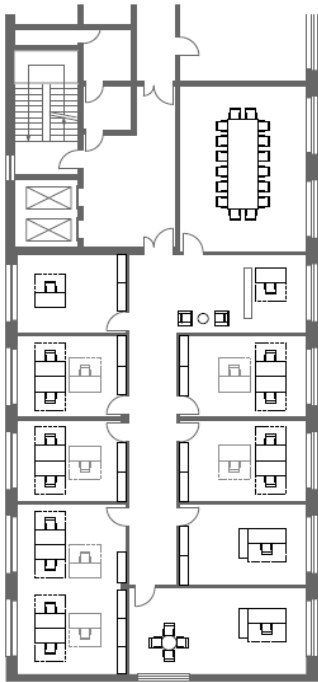


# ADD... | 4 AREAS CONCEPT

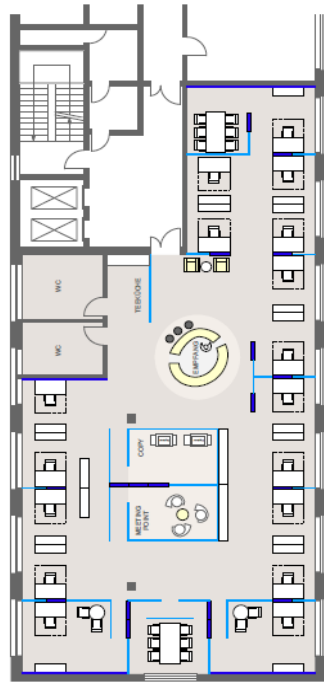
## SHAPES OVERVIEW / 43 POSSIBLE LAYOUTS



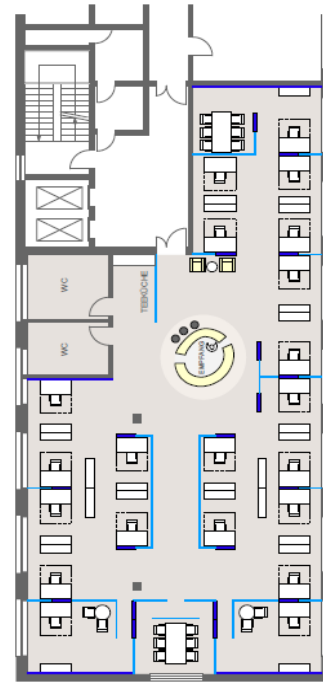
# ADD... | FLEXIBILITY FOCUSED ON FUTURE REQUIREMENTS



**Yesterday** - rigid expansion concept with single, double and group offices (16-22 WPL, excl. Tea kitchen + WC)



**Today** - an open office landscape with room quality and team space at every workstation for 18 employees incl. Tea kitchen + WC



**Tomorrow** - a flexibly convertible office landscape for 22 employees with equal workplace quality



**The day after tomorrow** - a significantly more compact office landscape for 32 employees with different team zones

# ADD... | FLEXIBILITY YOUR BENEFITS THROUGH A FLEXIBLE OFFICE

- + exchange or transfer of the individual components on the whole floor / in the whole building
- + short-term conversions without additional material by own, instructed personnel is possible
- + reduction of conversion costs
- + avoidance of waste





A modern office interior featuring two workstations. Each workstation consists of a light-colored wooden desk, a black ergonomic office chair, and a green fabric partition. A long, rectangular luminaire is suspended from the ceiling, providing light to the work area. The floor is a grey carpeted raised floor. A large window on the left side of the image provides natural light and a view of the outside. A potted plant is placed on the right side of the second workstation. Callout boxes with white text and thin white borders point to various elements: 'Ceiling' points to the ceiling structure, 'Partition' points to the green fabric divider, 'Luminaire' points to the suspended light fixture, 'Building services' points to the ceiling area on the right, and 'Raised floor' points to the carpeted floor.

Ceiling

Partition

Luminaire

Building  
services

Raised floor





**LET US BECOME FLEXIBLE  
TOGETHER!**



**EXPERIENCE ADD.VANTAGE –  
VISIT US**



Your contact with us:

[info@Lindner-Group.com](mailto:info@Lindner-Group.com) | +49 8723 20-0