A modern office interior featuring a large, open-plan space with a high ceiling. The ceiling is white with a grid of small, circular lights. Several long, curved, orange light fixtures are suspended from the ceiling, creating a dynamic and modern look. The office is furnished with desks, computers, and ergonomic chairs. A large glass wall in the background provides a view of the outside world. The floor is covered in a light-colored, patterned carpet. The overall atmosphere is bright and professional.

leuchten.fabrik

A Company of the Lindner Group

Focus on
function and design

Luminaires

Luminaires

Focus on function and design

The Lindner Group develops sophisticated Lighting Solutions for projects of all sizes with sound craftsmanship and architectural flair.

In the modern production facilities in Mettenbach and Arnstorf, high-quality luminaire ranges are designed and manufactured for all working environments: from freely configurable Light Channels, Integrated Luminares for Metal Ceilings, Large-Surface Ceiling Elements, Project-Related Special Luminares to Clean Room Lighting.

With minimal interfaces to the respective ceiling system, the best possible project elaboration and around 30 years of experience, we are the ideal partner to fulfil your lighting wishes.



chaft aus elf Spielern“

SEPP HERBERGER

ZUGESCHRIEBEN

DIE DEUTSCHE NATIONALMANNSCHAFT

Der erste WM-Titel der deutschen Nationalmannschaft 1954 geht als „Wunder von Bern“ in die Fußballgeschichte ein. Selten ist die DFB-Elf bei allen WM-Endrunden vertreten und erzielte den Ruf als erfolgreiche Turniermannschaft. Nach 1974 und 1990 gewann „Die Mannschaft“ in Brasilien zum vierten Mal den bedeutendsten Titel im Weltfußball.

THE GERMAN NATIONAL TEAM

Germany's first World Cup triumph in 1954 goes down in football history as the Miracle of Bern. The DFB team has been to every World Cup since then and built a reputation as a successful tournament side. After further wins in 1974 and 1990, Germany clinched world football's biggest prize for a fourth time in Brazil.





Mieterausbau Expertum, Hamburg, Germany



Donauquartier, Passau, Germany

Light Channels

Rediscovering classics

Light Channels are a classic lighting element. Either as high-performance functional lighting or for the creation of architecturally sophisticated strip lighting, our luminaires can be easily adapted to your requirements.

- project-related production
- high-quality lighting technology
- simple installation





Suspended Luminaires

Timeless lighting solution

If you are looking for a suspended light solution, we can provide the suitable lighting system. Either for functional, general lighting, high-quality decorative lighting or computer workstations with the highest glare control requirements, you'll be sure to find what you are looking for here.

- project-related production
- flexible application
- high-quality technology and design



Hapag-Lloyd Alte Rosenstraße, Hamburg, Germany





System Luminares for Metal Ceilings

Perfect coordination

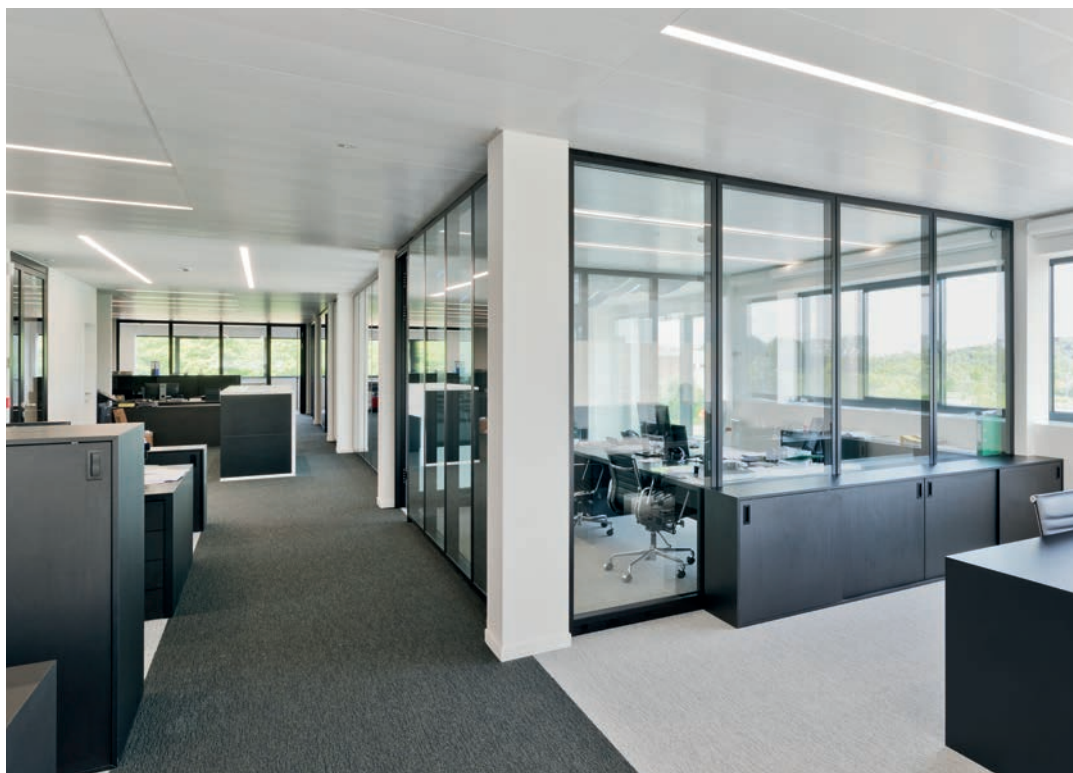
Ceiling and Lights are two different trades, which are perfectly combined with our System Luminares for Metal Ceilings. We can provide the suitable Lighting Solution for your system ceiling.

- perfectly synchronised
- project-related production
- high technical and visual quality

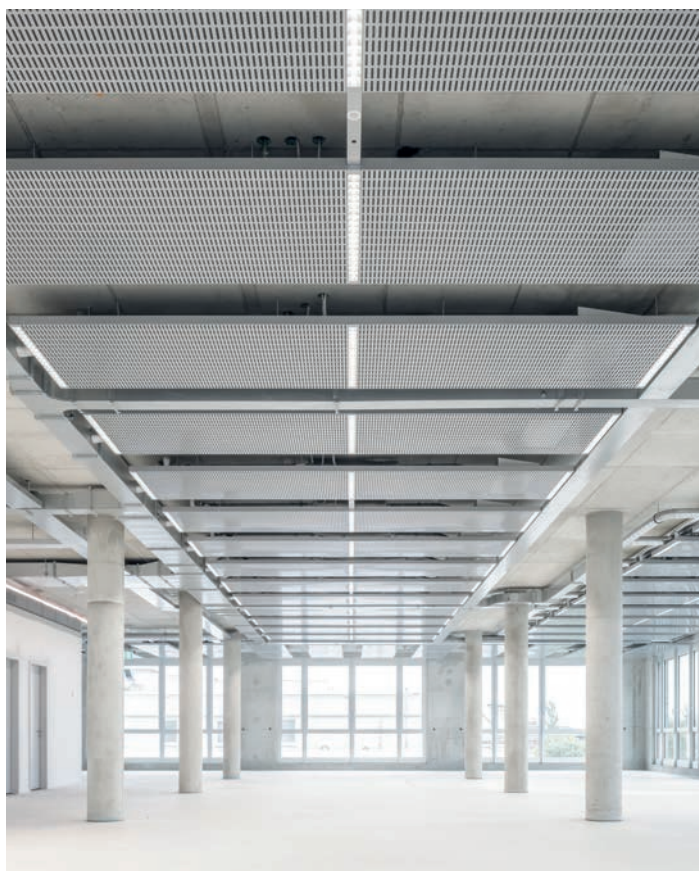


Pharmaceutical Company, Allschwil, Switzerland





Office Building Lindner Welsy, Heverlee, Belgium



Salzufer „Lanolinfabrik“, Berlin, Germany

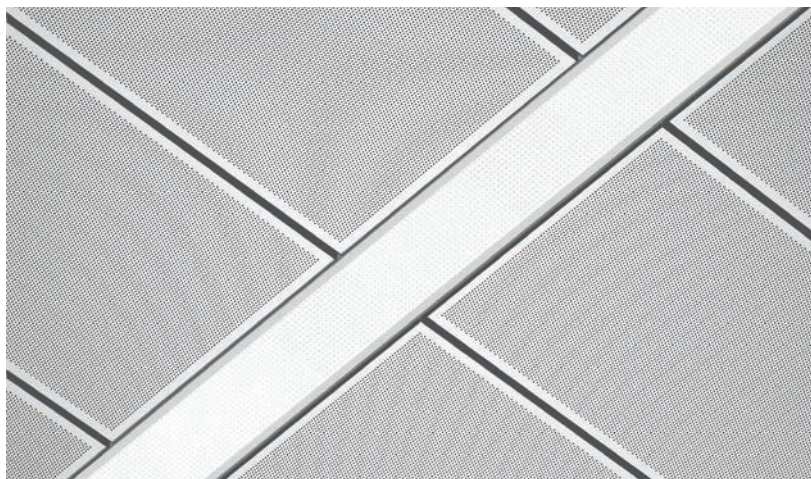
Overview of possible installation systems for Metal Ceilings



Hook-On Luminaires for Corridor Ceilings



Post Cap Luminaires



Hook-On Luminaires for Post Cap Ceilings









Sandler AG, Schwarzenbach, Germany



IMA Group SPA, Castel San Pietro Terme, Italy
© www.carlolavatori.com

Integrated Luminares in Metal Ceilings

Best conditions

The Lighting and Ceiling Systems are perfectly integrated with our Luminares in Metal Ceilings. We can offer lighting solutions that are perfectly adjusted to the room concept, the lighting requirement and the Ceiling System.

- simple installation on site
- no colour deviation to the Metal Ceiling Systems
- suitable for general areas and offices





Luminares for Metal Fireproof Ceilings

Flexible and reliable

Compliance with fire protection guidelines is very important in the modern construction industry and can save lives in the event of emergency. For this reason, we can offer you a wide range of especially developed Flat Luminares and Integrated Lighting Systems for Metal Fireproof Ceilings. Both sections, lighting and ceiling, go hand in hand, which enables you to work on your project without any problems.

- fireproof F 30/F 90
- no additional protective casing necessary
- flat design
- reduced interfaces between ceiling and lighting



Visualisation
© Lindner Group

Floor Luminares

Flexibility

Our Floor Lighting is sure to impress with its modern lighting technology, visually-pleasing design and simple installation. By being able to place them where you want, you can make sure there is light, wherever it is needed.

- modern lighting technology
- flexible positioning
- quick and easy set-up



Süwag - Umbau Open Space, Frankfurt, Germany







Raumedic, Helmbrechts, Germany

Healthcare-/Laboratory-/ Hospital Luminaire

For the strictest of requirements

Clean rooms are also extremely demanding in terms of the required light quality, lighting level and the seals of the lights against contaminants. Thanks to our years of experience in the lighting sector, we have the right know-how to fulfil these requirements.

- manufactured to the highest quality standards
- many years of experience in healthcare lighting
- perfect coordination with the Ceiling System

LED Retrofitting

Rethinking Energy Efficiency



Global Tower, Frankfurt, Germany
© Global Tower

Increased energy costs and the ban on the sale of fluorescent tubes are creating a need for action in conventional lighting systems.

By reducing energy consumption, we promote a sustainable and resource-conscious approach to our environment. But how can we save electricity most effectively?

A significant source of energy consumption is luminaire systems with conventional fluorescent lamps. Retrofitting to modern, energy-efficient lighting offers enormous savings potential – up to 80 %!

A cost-effective and sustainable alternative to purchasing new fixtures is developing energy-efficient, customised LED light modules/retrofit kits for technical luminaires. Thanks to precise manufacturing, these modules can be quickly and easily installed, allowing existing fixtures to be upgraded.

Advantages of Energy-Efficient Luminaire Solutions:

- Continued use of existing luminaire housings and electrical connections
- Customised development and adaptation of lighting technology
- Optional integration of sensors and/or dimming functions
- Option for installation and retrofitting included
- Eligible for BAFA (Federal Office for Economic Affairs and Export Control) funding

Interested?
Click here to access
our contact form





Bodan Werft, Kressbronn, Germany
© arabzadeh.schneider.wirth architekten

How does the retrofitting process work?

First, we need information about your existing luminaires – specifically details such as quantities, nameplate data, dimensional drawings, or installation conditions. You can easily provide these details through our contact form at the bottom of the page. Based on this information, our experts will prepare an indicative offer for you. If you require an on-site assessment, we are happy to arrange this for a flat fee. Next comes the sampling phase. Convinced? We look forward to receiving your order for the retrofitting process!

Is retrofitting to energy-efficient lighting subsidised?

Yes! The installation of energy-efficient lighting systems is eligible for subsidies under the BAFA funding programme for plant technology. For a minimum investment of 2,000€ (gross), 15 % of eligible expenses are covered by the federal government. You can find more information on the website of the Federal Office for Economic Affairs and Export Control (BAFA).

What reference projects are already available?

The team at Lindner Leuchtenfabrik works daily on new innovations in lighting as well as the constant renewal and improvement of existing systems. Their LED light modules/ retrofit kits have already won over numerous customers and have been implemented in projects such as the Bodan-Werft in Kressbronn, the Goldbachhalle in Ergoldsbach, St. Nikola Church in Altdorf, VR-Bank in Pfarrkirchen, and the renovation of the Friedrichstadt-Palast in Berlin.

How effective is the installation of LED light modules/ retrofit kits?

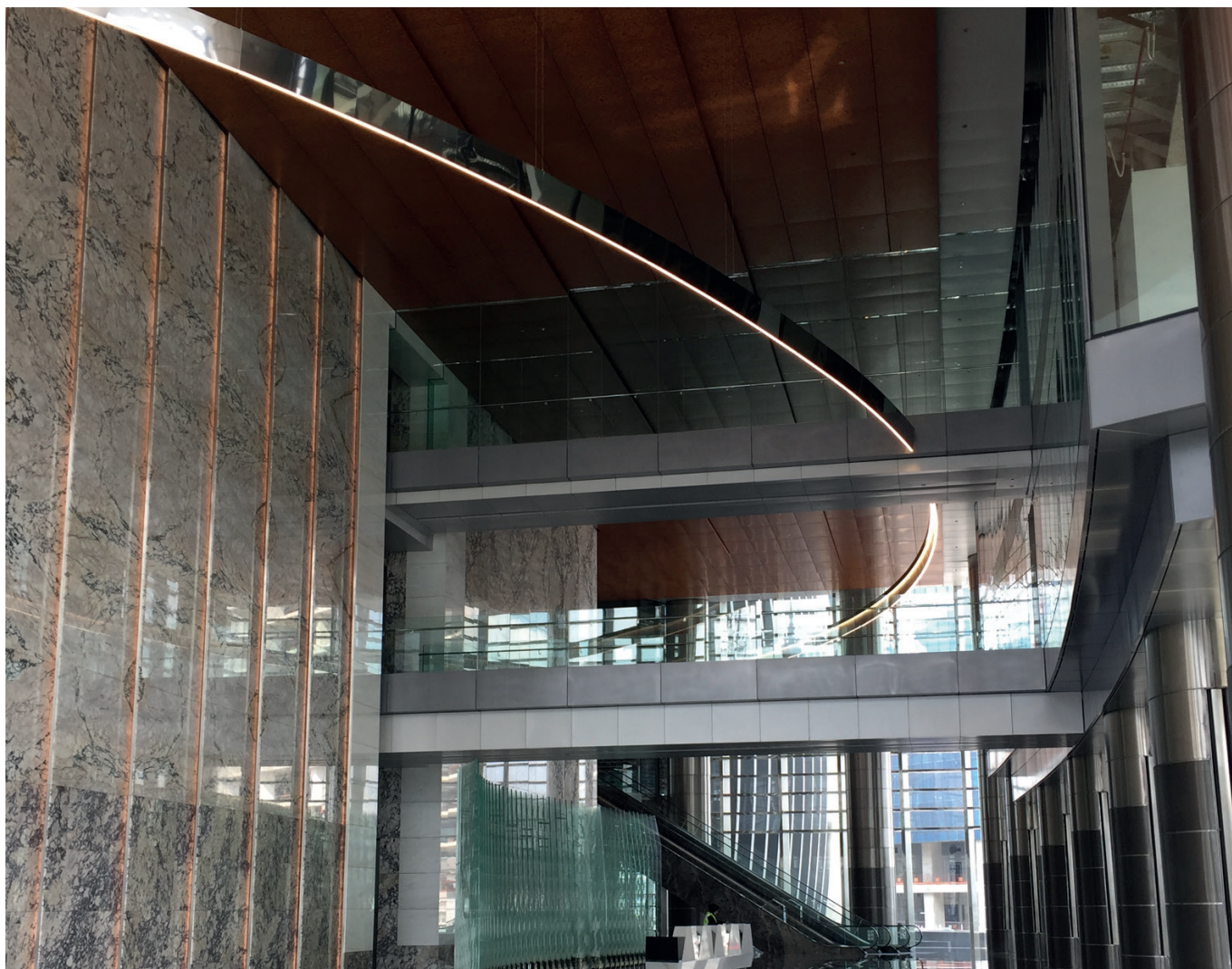
Let's consider one of our reference projects where we planned the renovation: By simply retrofitting to LED lighting, the connected load was reduced from 7.07 W/m² to 3.32 W/m² – representing an energy saving of 53 %. Further electricity savings can be achieved through networking and sensor technology. As you can see, retrofitting reduces energy consumption by more than half, allowing costs to be recouped in a very short time.

Custom Luminares

Individual solutions

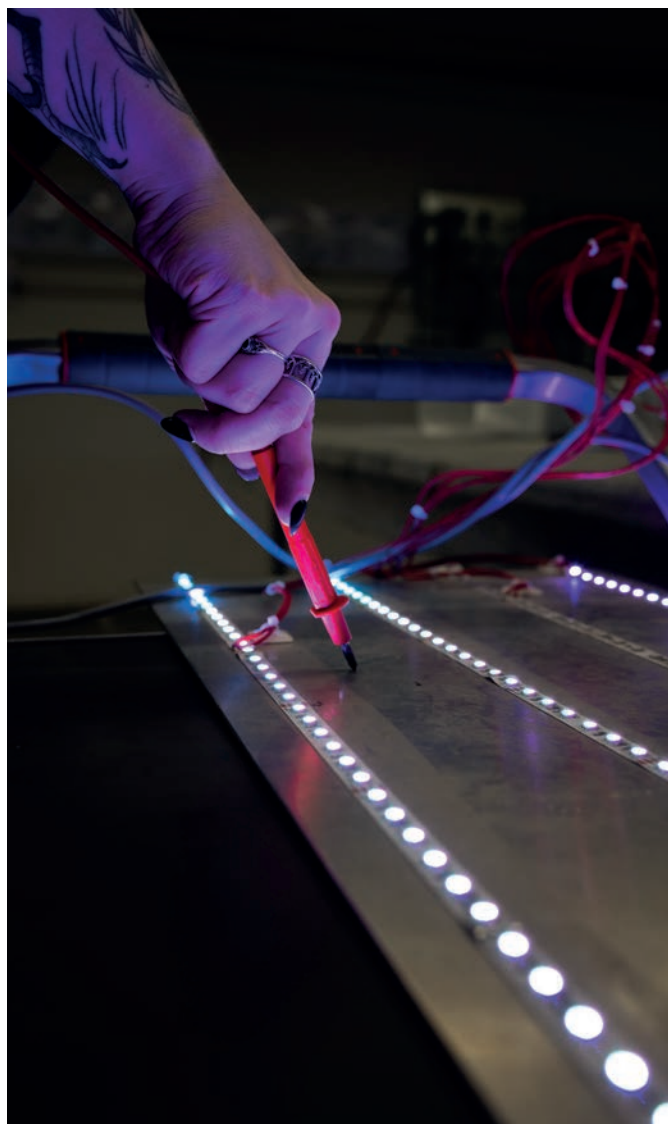
Alongside our standard product range we also offer various, special custom-made products. From Industrial Lighting and Light Ceilings to Surface Lighting, there is no technical challenge we won't try.

- manufactured to customer needs
- perfectly adapted to room sizes
- high technical and architectural quality



The Exchange 106, Kuala Lumpur, Malaysia
© Mulia Property Development





Rethinking Space

The Lindner Group's product and service portfolio is unique for interior fit-out, building technology, insulation and building envelopes. We are a technically strong, pragmatic and reliable partner with a solid economic basis for virtually all types of buildings.

In line with the motto "Rethinking Spaces", we develop customised yet flexible solutions and comprehensive concepts for building projects of all kinds with products from our own production – "Made by Lindner".

Add.Vantage in Quality and Sustainability

With our products, we know exactly "what's inside", where the raw materials and materials come from, what they contain, how and who processes them. This is how we ensure the high Lindner quality standard at first hand, tested and confirmed by detailed environmental product declarations and product certifications in accordance with the Cradle to Cradle Certified® Product Standard.

Add.Vantage in Design and Function

Thanks to our high level of vertical integration, we are able to customise products to your requirements, exactly as you wish – including suitable acoustic, fire protection and safety concepts as well as the highest sustainability criteria.

In addition to our craftsmanship, we draw on the knowledge and experience of more than 200 specialists in our Research & Development Department and our in-house test workshop.

Strong Products – Strong Team

Another Add.Vantage: all Lindner interior fit-out elements are perfectly harmonised with each other. This not only simplifies assembly, but also use, maintenance and remodelling. In line with the Cradle to Cradle® Principle, our aim is to reuse and recycle products and materials for as long as possible while maintaining the same level of quality. Who better to install or remodel Lindner products than ourselves? That's why we rely on our own team power with over 2,000 of our own fitters.

More than just a Construction Company

Since our foundation in 1965, we have grown into an internationally successful construction company with a good 3,000 ongoing projects every day. Our headquarters are and will remain in Arnstorf in Lower Bavaria, where the majority of our production facilities are located.

Our mission "Building New Solutions" means developing innovative ideas for our construction projects, but also for the construction industry as a whole. In doing so, we take responsibility for a future worth living and drive forward the future topics of digitalisation and sustainability with new solutions.

However, our group of companies not only includes construction and property, but also catering, sustainable forestry and agriculture as well as social foundations. People are at the centre of everything we do. As a family business, we attach great importance to tradition and sustainability, but also to innovation and healthy growth.



A global player... with our roots in Arnstorf



Luminares and Lighting Solutions – References worldwide

- Deutsche Bank, Frankfurt, Deutschland
- Sandler AG, Schwarzenbach, Deutschland
- University of Hamburg – WiSo Library, Germany
- BMW FIZ, Munich, Germany
- Kynaststrasse Berlin, Germany
- German Football Museum, Dortmund, Germany
- EAS, Langenselbold, Germany
- German Consulate, Bombay, India
- Audi H6, Ingolstadt, Germany
- BayWa, Munich, Germany
- Nishith Desai Associates (NDA), India
- Expansion headquarters Pompadour, Bolzano, Italy
- Hapag-Lloyd, Hamburg, Germany
- Redmolen Nordhavn, Copenhagen, Denmark
- Mercedes Car dealership Grill, Ebersberg, Germany

Globally we have realised countless projects for our customers, meet challenges and grow with them. A worldwide network of reliable partners and established subsidiaries supports us doing our work. In the following pages, you'll find an overview of our extensive range of Lighting Solutions.

Contact us at our headquarters in Arnstorf or visit www.Lindner-Group.com to find your local point of contact.

Lindner SE | Leuchtenfabrik
Bahnhofstrasse 29
94424 Arnstorf
Deutschland
info@Leuchtenfabrik.com



Cover: Hapag-Lloyd Ballindamm, Hamburg, Deutschland

Lindner Group | Leuchtenfabrik
Bahnhofstrasse 29 | 94424 Arnstorf
info@Leuchtenfabrik.com | www.Leuchtenfabrik.com

Rev. 02