



# CONCERT HALLS

PURE LISTENING PLEASURE





A photograph of the Lindner building entrance. The building has a modern facade with large glass panels and a metallic grid pattern. The Lindner logo, a stylized 'L' inside a square, is mounted on the wall above the entrance. Two people are walking up the steps towards the entrance. A semi-transparent dark grey box containing text is overlaid on the lower half of the image.

# THERE IS NO WAY FOR 'NO WAY'!

Over the years Lindner Group has developed itself into a sound, technically strong, solution-oriented as well as reliable partner. In everything we do, we always keep the environment in mind as "healthier construction" is self-evident for us. New concepts challenge us to become even better at implementing projects. According to the motto "There is no way for 'No Way'!" we make the impossible possible for our customers.

## **STABILITY AND GROWTH**

Since the founding by Hans Lindner in 1965, our headquarters is located in Lower Bavarian Arnstorf, where we have grown enormously during the last decades. With about 7,500 employees around the world, we are proud to be the largest employer in the district of Rottal-Inn. Every day we work on 2,500 projects which revolve for the most part around our core business, the construction industry. We are complemented by our foundation, the mk | hotels, the house breweries and more recently by a sustainable agriculture and forestry.





# CONCERT HALLS

## PURE LISTENING PLEASURE.

The major challenge in concert halls is to successfully combine optimal room acoustics, sophisticated design, a high level of functionality and fire protection requirements for individual floor, ceiling and wall claddings. As experts in interior fit-out we can provide comprehensive solutions to concepts that are tailored to your needs. We make your concert hall a multifunctional space to provide the most suitable acoustic conditions for every event.

A veritable pleasure for eyes and ears.

We offer everything from one source, from consultation in the planning stage to complete interior fit-out using our own specially developed products.

- + custom and complete solutions from one source
- + close cooperation with architects and specialist planners for a coherent effect
- + including customised consulting, an integrated concept and precise coordination to create the perfect concert hall
- + with construction solutions from experienced CAD specialists in cooperation with our research and development department
- + elements for room acoustics and fire protection from our own production







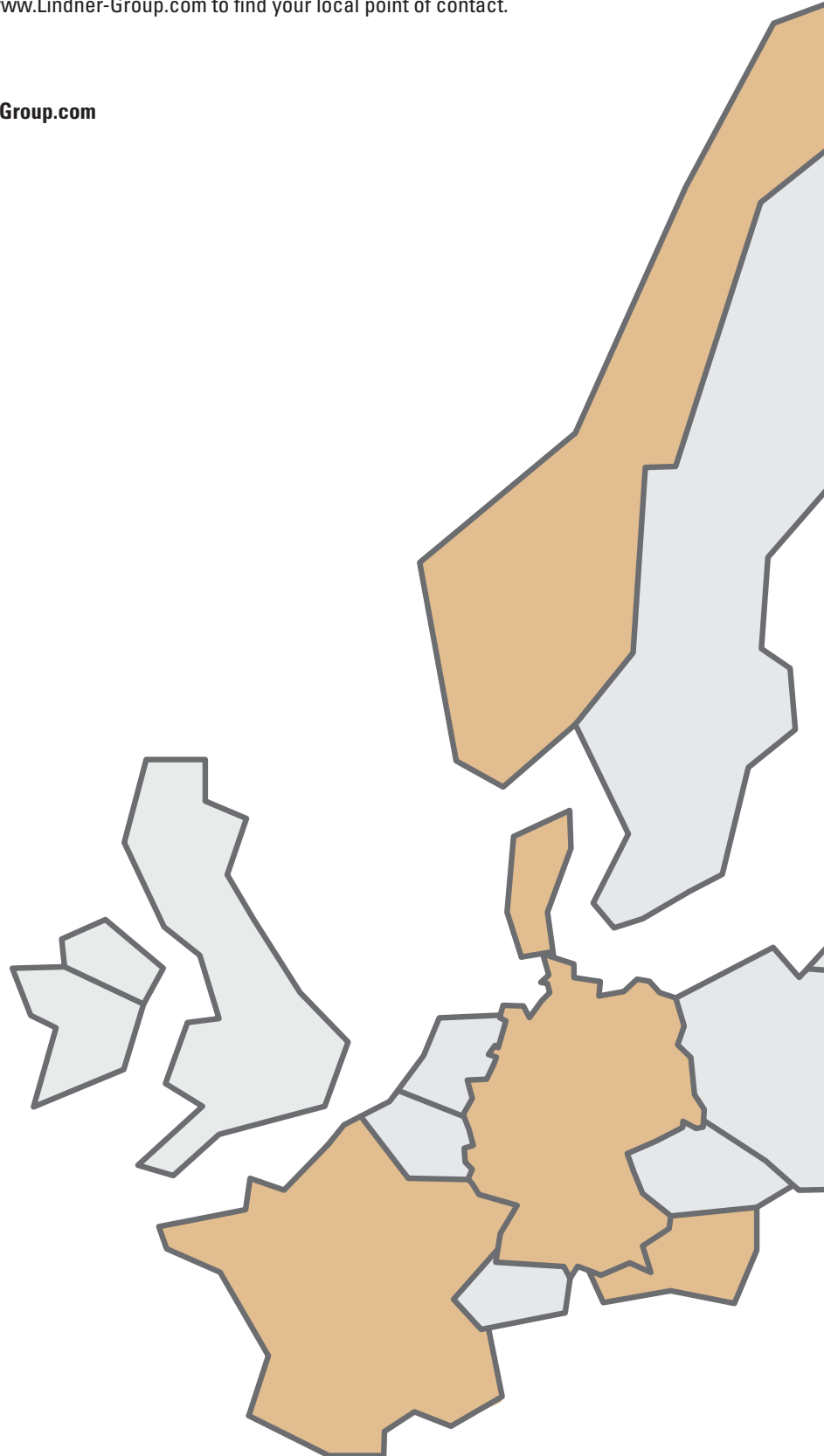
# A GLOBAL PLAYER... WITH OUR ROOTS IN ARNSTORF

Globally we have realised countless projects for our customers. From very small and simple up to very large and demanding.

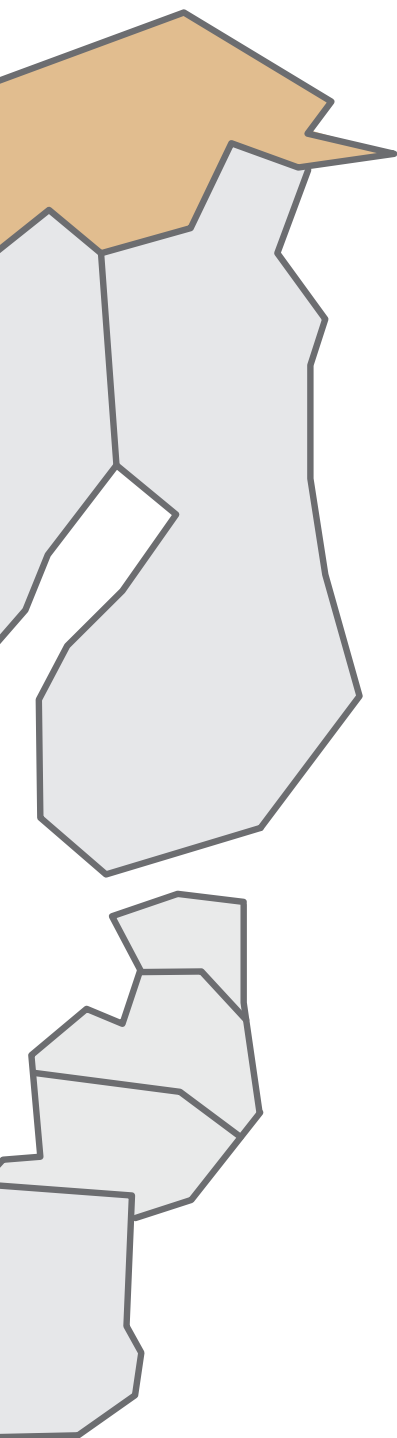
The key activities of the Objektdesign business unit comprise the experienced handling of wood as a natural material, the planning and execution of high-quality carpentry work and the use of innovative composite materials. We achieve our demanding quality standards by manufacturing our products and customised solutions at our own production facilities in Arnstorf in Lower Bavaria, Ostrov (CZ) and Madunice (SK). Our many years of experience and competence in high-quality interior design mean we already have a large portfolio of successfully completed projects, which are presented on the following pages.

Contact us at our headquarters in Arnstorf or visit [www.Lindner-Group.com](http://www.Lindner-Group.com) to find your local point of contact.

**Lindner Group | Objektdesign**  
**Bahnhofstrasse 29 | 94424 Arnstorf | Germany**  
**[fit-out.furnish@Lindner-Group.com](mailto:fit-out.furnish@Lindner-Group.com) | [www.Lindner-Group.com](http://www.Lindner-Group.com)**







## **LINDNER OBJEKTDESIGN PROJECTS**

Pierre-Boulez-Saal, Berlin, Germany  
Kulturpalast, Dresden, Germany  
Carmen-Würth-Forum, Künzelsau, Germany  
Schauspielhaus im Staatstheater, Stuttgart, Germany  
Kultur- und Kongresshalle, Ingelheim, Germany  
Concert House Danish Radio, Copenhagen, Denmark  
Nytt Konserthaus, Stavanger, Norway  
Kilden Performing Arts Centre, Kristiansand, Norway  
Radio France, Paris, France  
Theatre & Meeting, Genting Dream, Papenburg, Germany  
Elbphilharmonie, Hamburg, Germany  
Johann-Sebastian-Bach Saal, Köthen, Germany  
WCCB Konzertzimmer, Bonn, Germany  
Mercatorhalle, Duisburg, Germany  
Kunstpallast Robert Schumann Saal, Düsseldorf, Germany  
Philharmonie, Essen, Germany  
Paul Hindemith Congress Saal, Hanau, Germany  
Stadttheater, Bielefeld, Germany  
Kultur- und Tagungszentrum, Worms, Germany  
Universität Mozarteum, Salzburg, Austria



### ➤ PIERRE-BOULEZ-HALL, BERLIN, GERMANY

The Barenboim-Said Akademie in the heart of Berlin is dedicated to the support of musicians from the Middle East. At the heart of the building is the concert hall which is named after the conductor Pierre Boulez and is where Lindner Objektdesign was able to contribute its many years of experience in the complete interior fit-out of concert halls. The major challenge of combining aesthetics, functionality and acoustics initially began with the preparation of a three-dimensional work and assembly plan. The wall and ceiling construction of the hall was created in the next step. The interior work was completed by the production and installation of the FIREwood flame-retardant, real wood veneered wall and ceiling claddings as well as several fire protection and sound insulation doors in the hall's access area. The surface of both the cladding and the door elements was chosen as North American Oregon pine veneer.





**ARCHITECT**

Frank Gehry, Los Angeles, USA

**OWNER**

Barenboim-Said Akademie, Berlin, Germany

**SERVICES**

complete interior fit-out of the hall and entrances

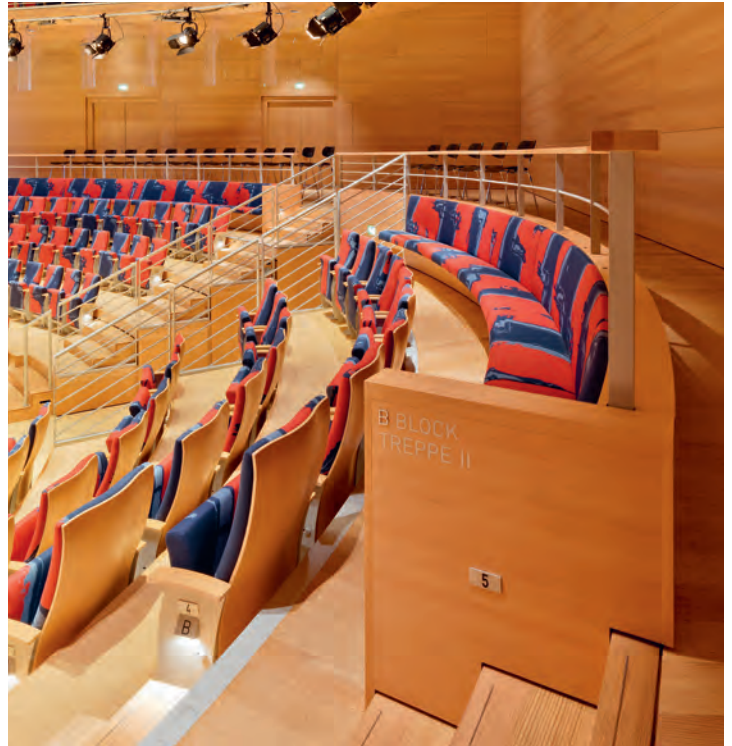


Photo: © Barenboim-Said-Akademie / Photo: Volker Kreidler











### ➤ KULTURPALAST, DRESDEN, GERMANY

The Kulturpalast temporarily closed its doors in 2012 for an extensive and complete renovation. As part of this redevelopment, Lindner AG was commissioned with the complete interior fit-out of the concert and cabaret hall. To guarantee the acoustic effectiveness of the concert hall, but also at the same time to create an appealing aesthetic, an acoustically effective FIREwood flame-retardant wall cladding in red oak veneer was used. The ceiling surfaces consist of specifically folded, triangular panels based on gypsum fibre. In addition to the concert hall services mentioned above, Lindner was also able to apply its expertise in the foyers, the access area, the library and in the "Herkuleskeule" cabaret hall. Furthermore, a large number of wooden doors, also from our own production, were installed. These meet the high demands for fire protection.



Photo: © Christian Gahl / gmp Architekten





#### ARCHITECT

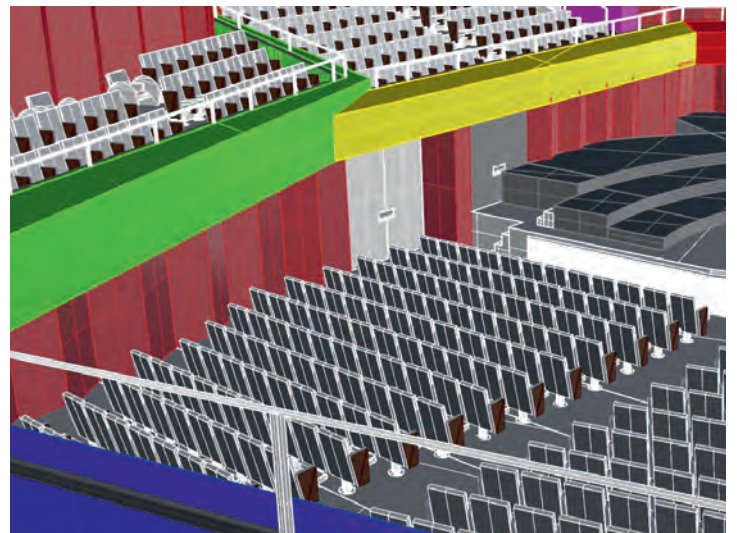
gmp Architekten von Gerkan, Marg und Partner, Hamburg, Germany

#### OWNER

Kommunales Immobilienmanagement Dresden, Germany

#### SERVICES

complete interior fit-out of the concert hall as well as the entrances, the foyers and the "Herkuleskeule" cabaret hall





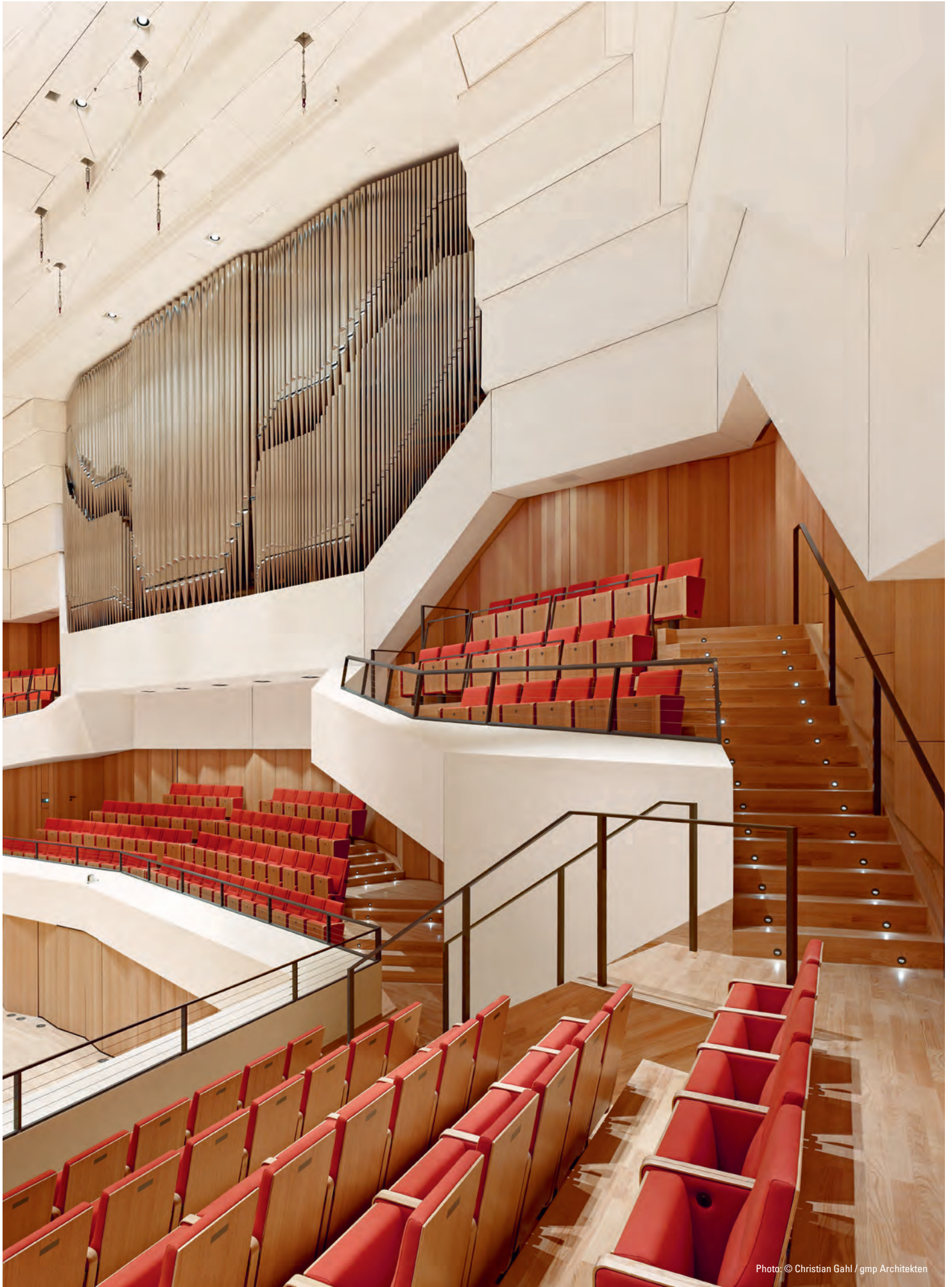


Photo: © Christian Gahl / gmp Architekten

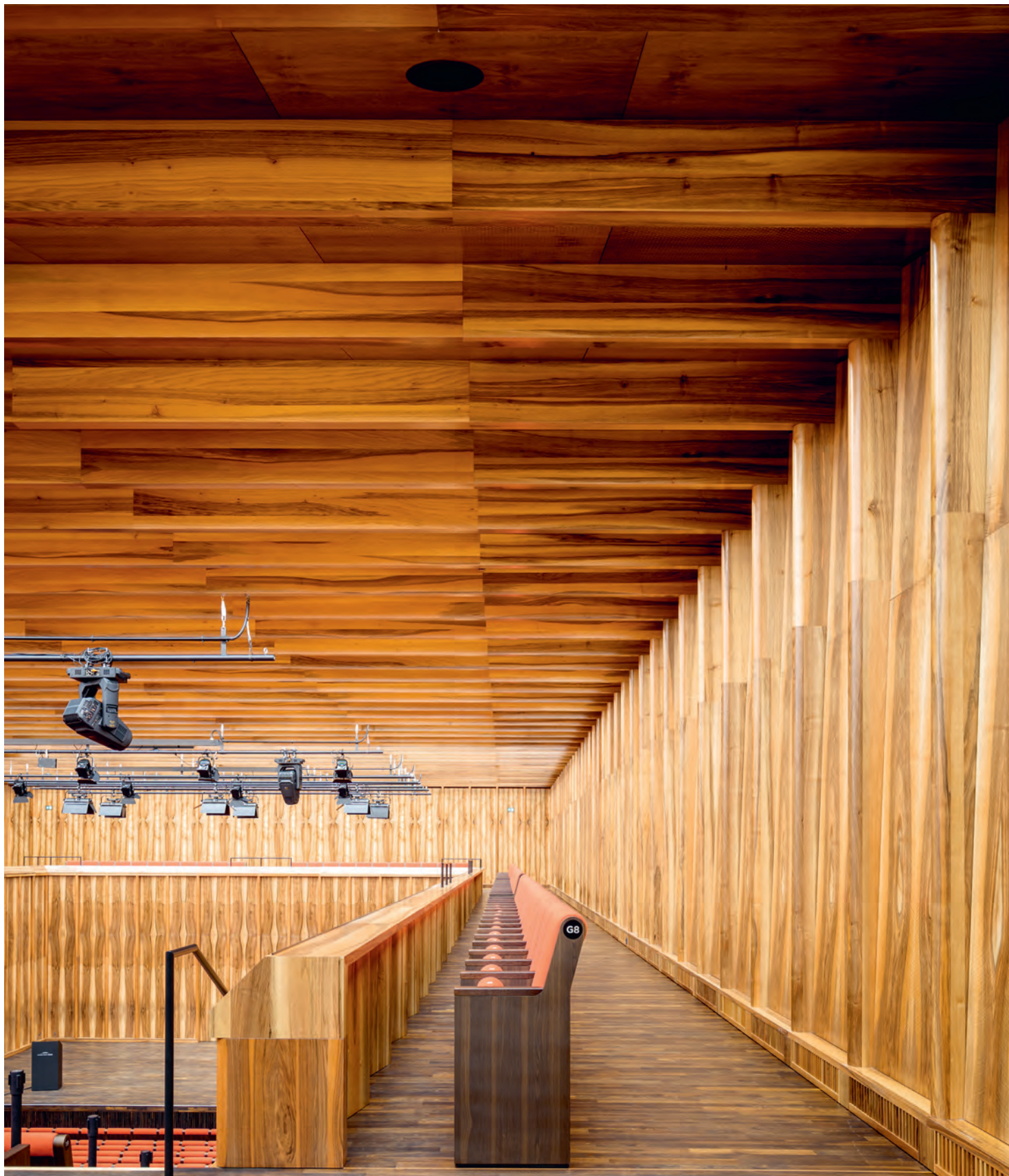






#### ➤ CARMEN-WÜRTH-FORUM, KÜNZELSAU, GERMANY

The Carmen Würth Forum in Künzelsau, Baden-Württemberg, was an undeniable affair of the heart for the entrepreneurial couple Mr and Mrs Würth. This project only took six months from planning to completion and involved Lindner Objektdesign being commissioned with the complete interior fit-out of the chamber music hall as well as production of the seating in the great hall. Flame-retardant FIREwood was used to clad the walls, ceiling, balustrade and round pillars. Real wood veneer from European walnut was used as the surface. This not only provides the hall with a distinctive look but also creates a warm atmosphere. The seven object doors in the access and stage area round off the chamber music hall project. The natural appearance was continued throughout the great hall by the real wood veneered seating in ash.







#### ARCHITECT

David Chipperfield Architects,  
Berlin, Germany

#### OWNER

Adolf Würth GmbH & Co. KG,  
Künzelsau, Germany

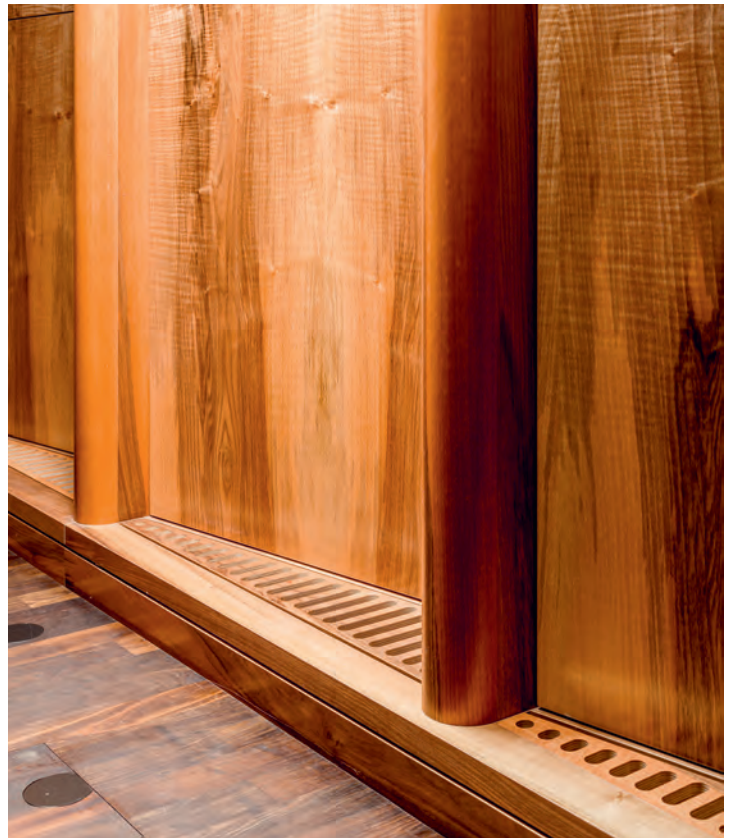
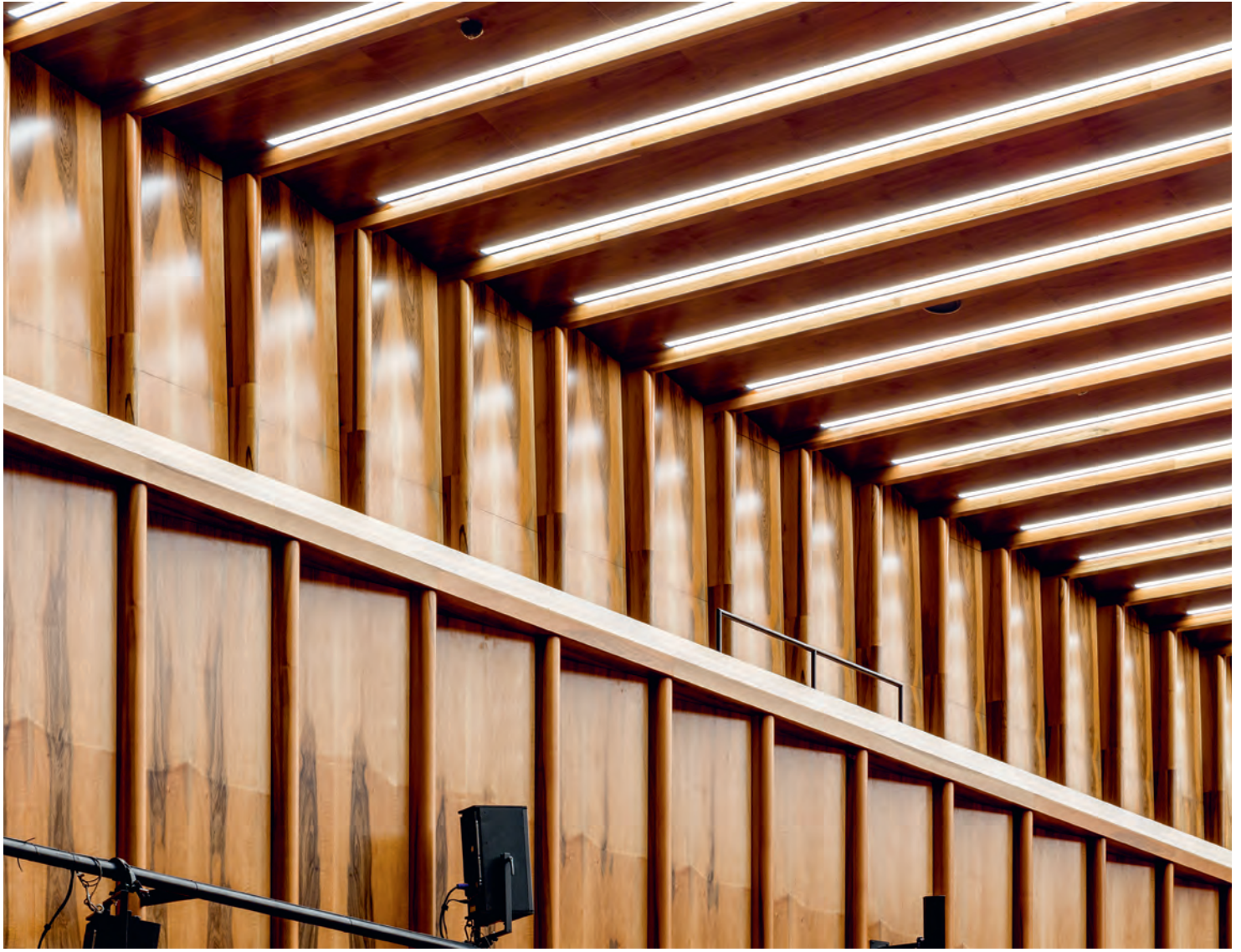
#### SERVICES

complete interior fit-out of the  
chamber music hall and car-  
pentry work in the great hall











#### ➤ **SCHAUSPIELHAUS IM STAATSTHEATER, STUTTGART, GERMANY**

The theatre underwent a general refurbishment with the aim of improving its structural condition and technical facilities. The auditorium was provided with a prismatically folded, acoustically effective room shell, in which large areas are made from flame resistant, wenge veneered FIREwood panels. The entire work and assembly planning was created in 3D to enable the complex geometric shapes to be displayed. Lindner Objektdesign was not only responsible for the interior design of the hall, but also for the complete extension of the foyer. The walls, ceiling and balustrades were likewise clad with FIREwood.



Photo: © Brígida González





Photo: © Brigida González

#### ARCHITECT

Klaus Roth Architekten BDA,  
Berlin, Germany

#### OWNER

Vermögen und Bau  
Baden-Württemberg,  
Stuttgart, Germany

#### SERVICES

complete interior fit-out of the  
hall, the entrances and the  
foyer



Photo: © Brigida González





Photo: © Brigida González







### ➤ KING HALL FOR CULTURE AND CONGRESS, INGELHEIM, GERMANY

An extraordinary event location with inspiring architecture and a special atmosphere has been created with the new Culture and Congress Hall in the city centre of Ingelheim. The owner entrusted the interior fit-out of the hall, the foyer and the access areas to the competence of Lindner AG's Objektdesign business unit. The wall and ceiling cladding of the aforementioned areas was refined with veneers of smoked oak or Canadian maple, lending the spaces a harmonious atmosphere. The claddings were manufactured in both smooth and micro-perforated, sound-absorbing versions to meet the requirements for aesthetics and acoustics in equal measure. Numerous fire and smoke protection door elements completed the project.





**ARCHITECT**

Schwinde Architekten Partnerschaft, Munich, Germany

**OWNER**

Wohnungsbaugesellschaft Ingelheim am Rhein GmbH,  
Germany

**SERVICES**

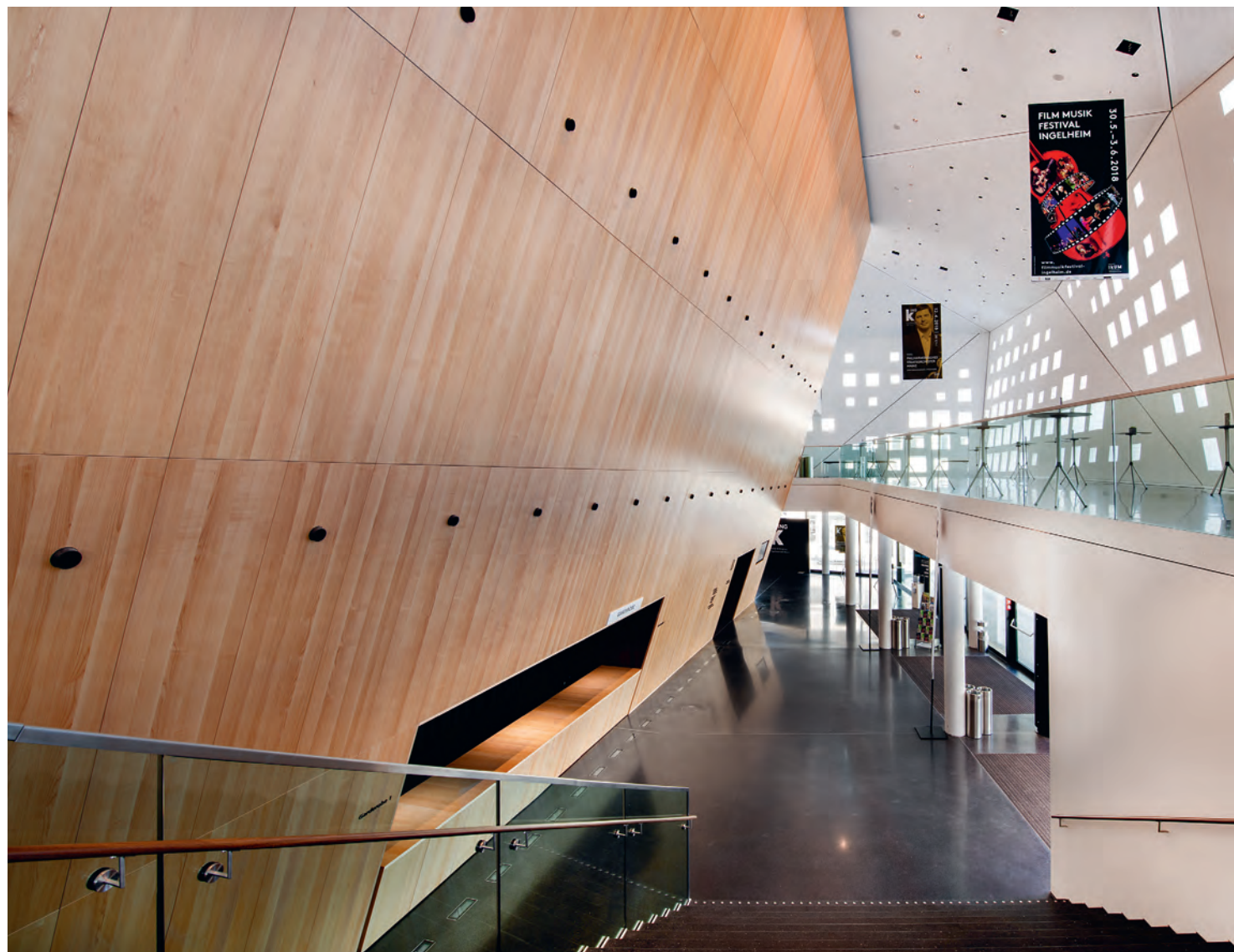
complete interior fit-out of the hall, the foyer and the entrances













### ➤ CONCERT HOUSE DANISH RADIO, KOPENHAGEN, DENMARK

This concert hall is part of the Danish State Radio building complex in the centre of Copenhagen. Lindner AG was commissioned with interior fit-out of the concert hall, the studio, the foyer and the Queens Lounge, which is the private area for the Danish royal family. The walls and balconies of the hall were clad with flame-retardant, stained multiplex panels. Some of the birch veneered panels were provided with individual acoustic grooves that seamlessly blend into the natural wood look. A 3D model was produced to assist with joining the individual surfaces, which contained numerous squares and curves. The panels were fitted on site to obtain a precise result.







**ARCHITECT**

Ateliers Jean Nouvel, Paris,  
France

**OWNER**

Danish Radio, Copenhagen,  
Denmark

**SERVICES**

complete interior fit-out of the  
hall, the foyer and the Queens  
Lounge

Photo: © Kontraframe.dk



Photo: © Kontraframe.dk





Photo: © Kontraframe.dk







#### ➤ NYTT KONSERTHUS, STAVANGER, NORWAY

Lindner AG was awarded the contract for complete interior fit-out of the hall and foyer as well as for construction of the access stairs for this concert hall in Stavanger, Norway. The wall, ceiling and balcony cladding in the hall comprises various geometric panels. An oiled, honey-coloured veneer of Canadian maple was chosen as the surface. Implementation of the free-form staircase extending over three floors, also in maple veneer, was equally demanding. All components were manufactured individually according to a 3D model, the measurements and complete planning were also conducted in 3D.





**ARCHITECT**

RATIO arkitekter as, Oslo,  
Norway

**OWNER**

NYTT KONSERTHUS I  
STAVANGER IKS, Stavanger,  
Norway

**SERVICES**

complete interior fit-out of the  
hall and foyer as well as  
design and interior fit-out of  
the access stairs



Photo: © www.justdirk.net



Photo: © www.justdirk.net



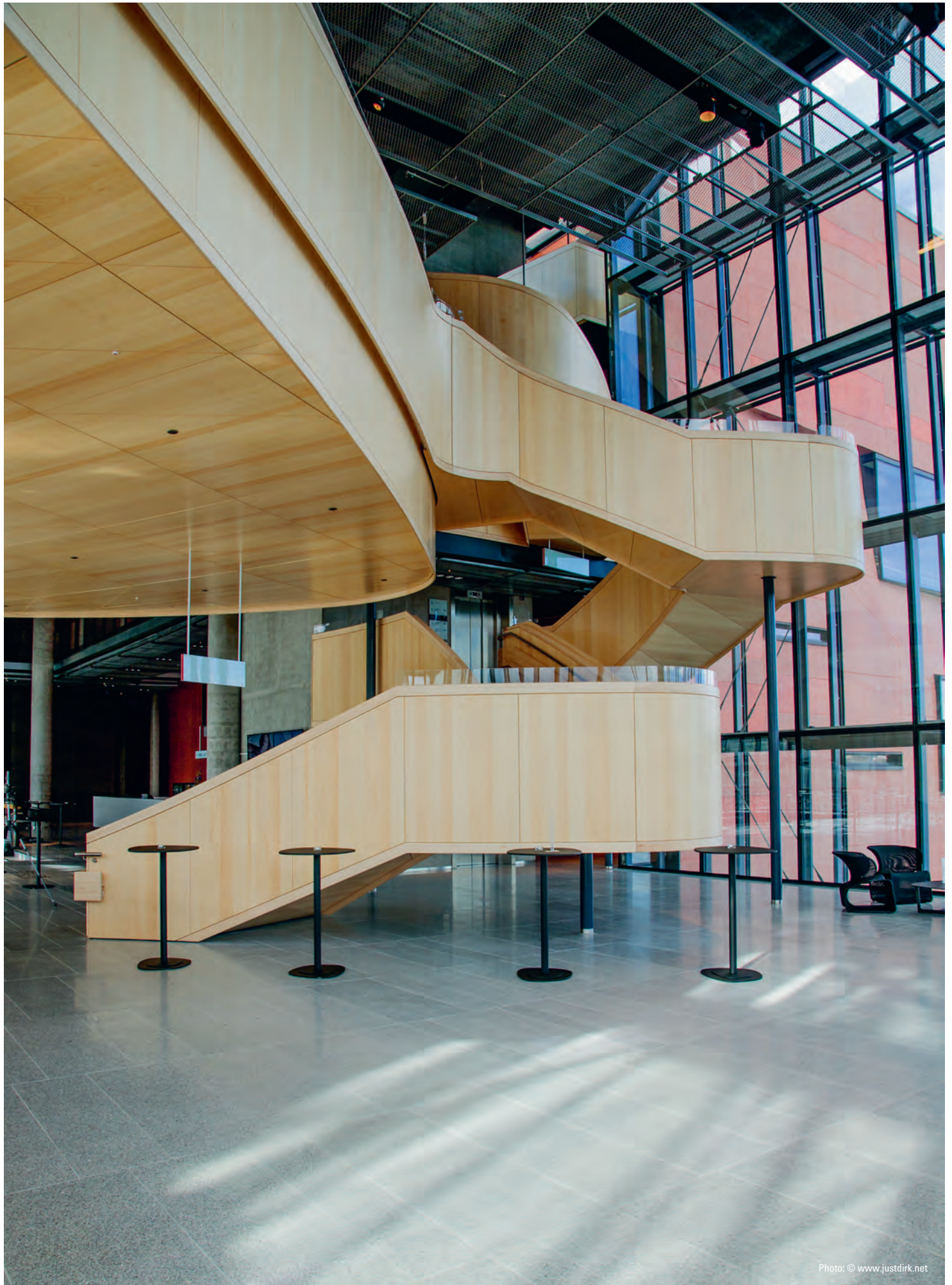
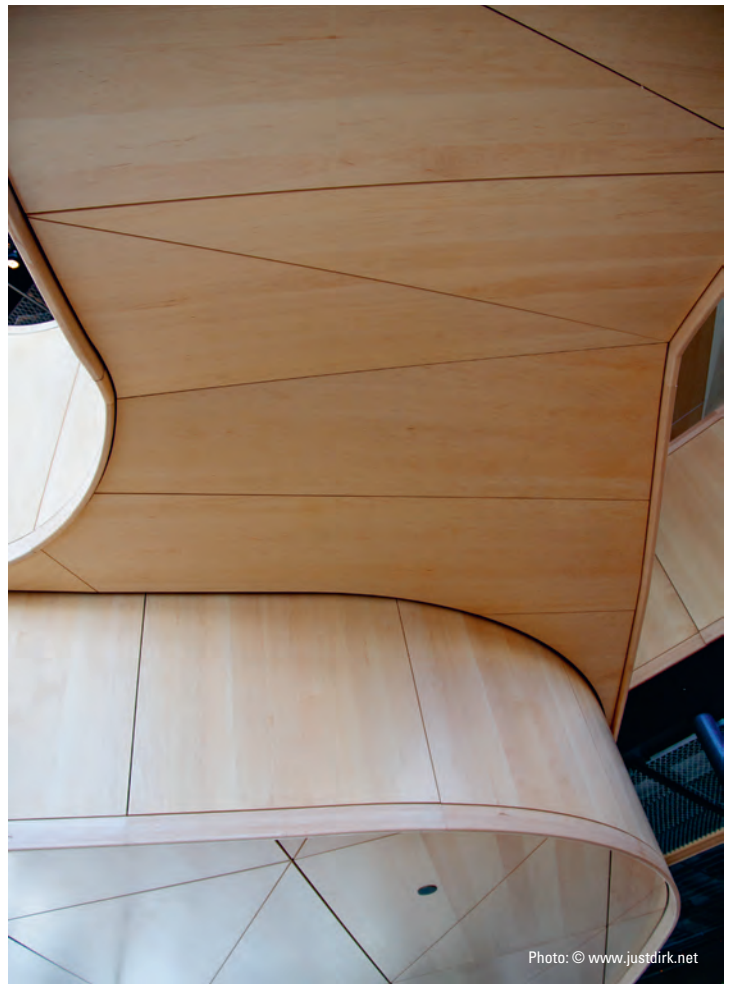


Photo: © [www.justdirk.net](http://www.justdirk.net)







➤ **KILDEN PERFORMING ARTS CENTRE, KRISTIANSAND, NORWAY**

This concert hall is located in the Kilden Performing Arts Centre, which is the cultural centre of Southern Norway. Lindner AG served as a competent partner for complete renovation of the hall, the foyer and the access areas. The wall claddings were veneered with ash and provided with acoustically effective V-shaped grooves in the surface. The different geometries of the wall, ceiling and balcony claddings posed a particular challenge.



Photo: © Tuomas Uusheimo





Photo: © Tuomas Uusheimo



Photo: © Tuomas Uusheimo

#### ARCHITECT

ALA Architects Ltd. & SMS Architects, Helsinki, Finland

#### OWNER

Kilden TKS IKS, Kristiansand, Norway

#### SERVICES

complete interior fit-out of the main hall Kristiansand and all adjacent halls



### ➤ RADIO FRANCE, PARIS, FRANCE

Radio France's concert hall is located on the banks of the Seine, not far from the Eiffel Tower. The complete interior fit-out of the concert hall was entrusted to the competent hands of Lindner AG. The wall, ceiling and balcony cladding in the hall comprises three different, horizontally layered veneer types, which are not only visually but also acoustically impressive, since a relief wood surface was created with different material thickness. Fire protection requirements resulted in the cladding substructure made of gypsum panels. The high weight per unit area of the panel material additionally improves sound reflection. A particular challenge was presented by the rear balcony walls, where the individual elements comprise veneered gypsum panels with rounded surfaces.



Photo: © AS.Architecture-Studio





Photo: © AS.Architecture-Studio

**ARCHITECT**  
Architectes Urbanistes, Paris,  
France  
**OWNER**  
Radio France, Paris,  
France  
**SERVICES**  
complete interior fit-out of  
the hall



Photo: © AS.Architecture-Studio



#### THEATRE & MEETING, GENTING DREAM, PAPENBURG, GERMANY

The Genting Dream cruise ship, where the theatre is located, is another flagship of the renowned shipping company Dream Cruises. The Cruise Liner and Ship Fit-out team from the Objektdesign business unit was commissioned, among other things, with the complete interior fit-out of the theatre hall and the backstage and recreation rooms. On cruise ships, the combination of fire protection and the weight per unit area of the structural elements is a particular challenge, or at least the combination of these two requirements. The wall claddings comprise COMP+ lightweight panels with an HPL surface, which have been especially tested for the fit-out of cruise liners and ships. Acoustically effective elements were used for the suspended ceiling. The highlights of the hall, however, are undoubtedly the upholstered seats with an integrated ventilation system on the rear of the backrest. These were specifically developed for this theatre and manufactured in our own production facilities.

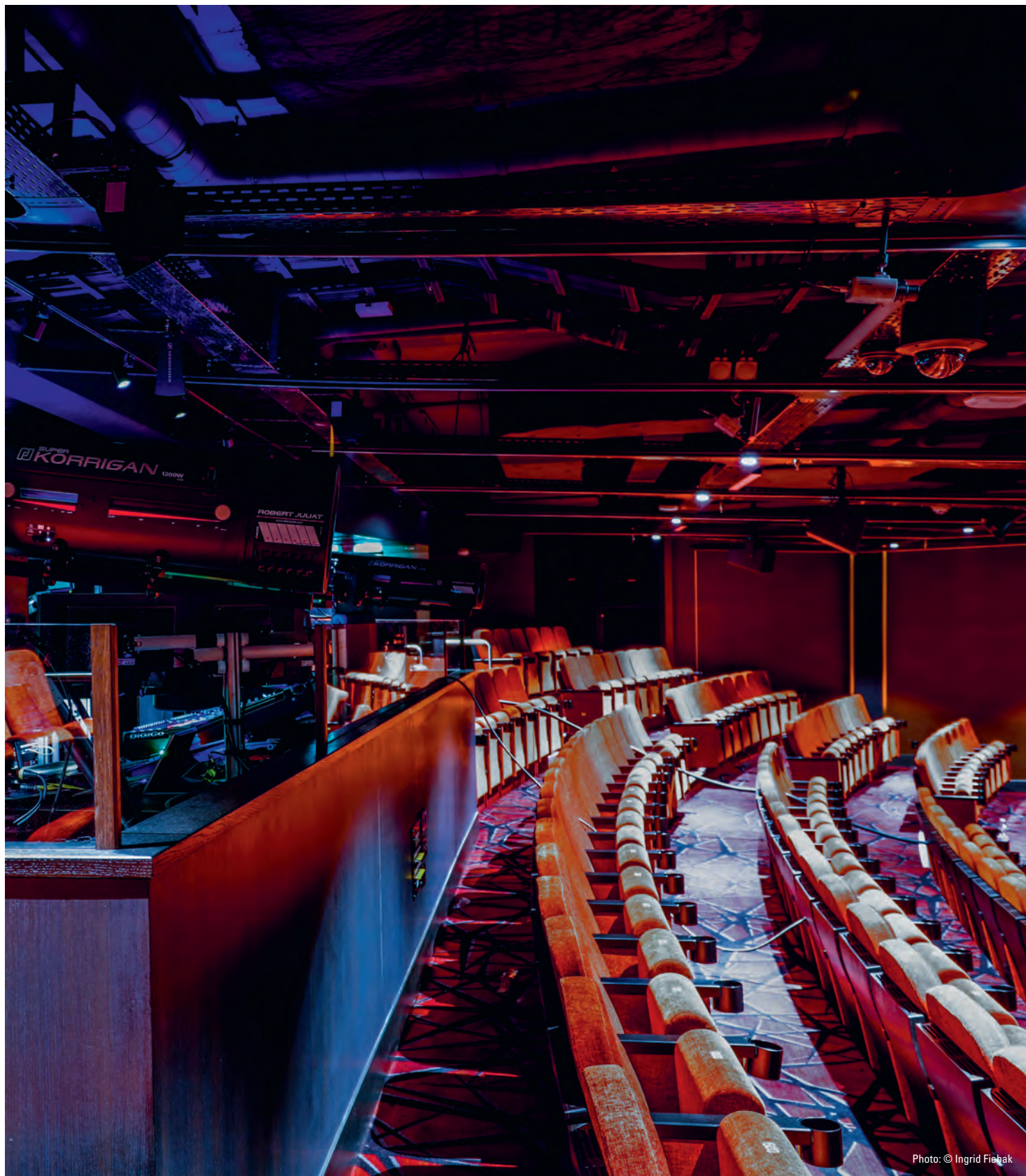


Photo: © Ingrid Fiebak



**ARCHITECT**

SMC Design, London, UK

**OWNER**

Genting Hong Kong Ltd.,  
People's Republic of China

**SHIPPING COMPANY**

Dream Cruises, Hongkong,  
People's Republic of China

**SHIPYARD**

Meyer Werft, Papenburg,  
Germany

**SERVICES**

complete interior fit-out



Photo: © Ingrid Fiebak

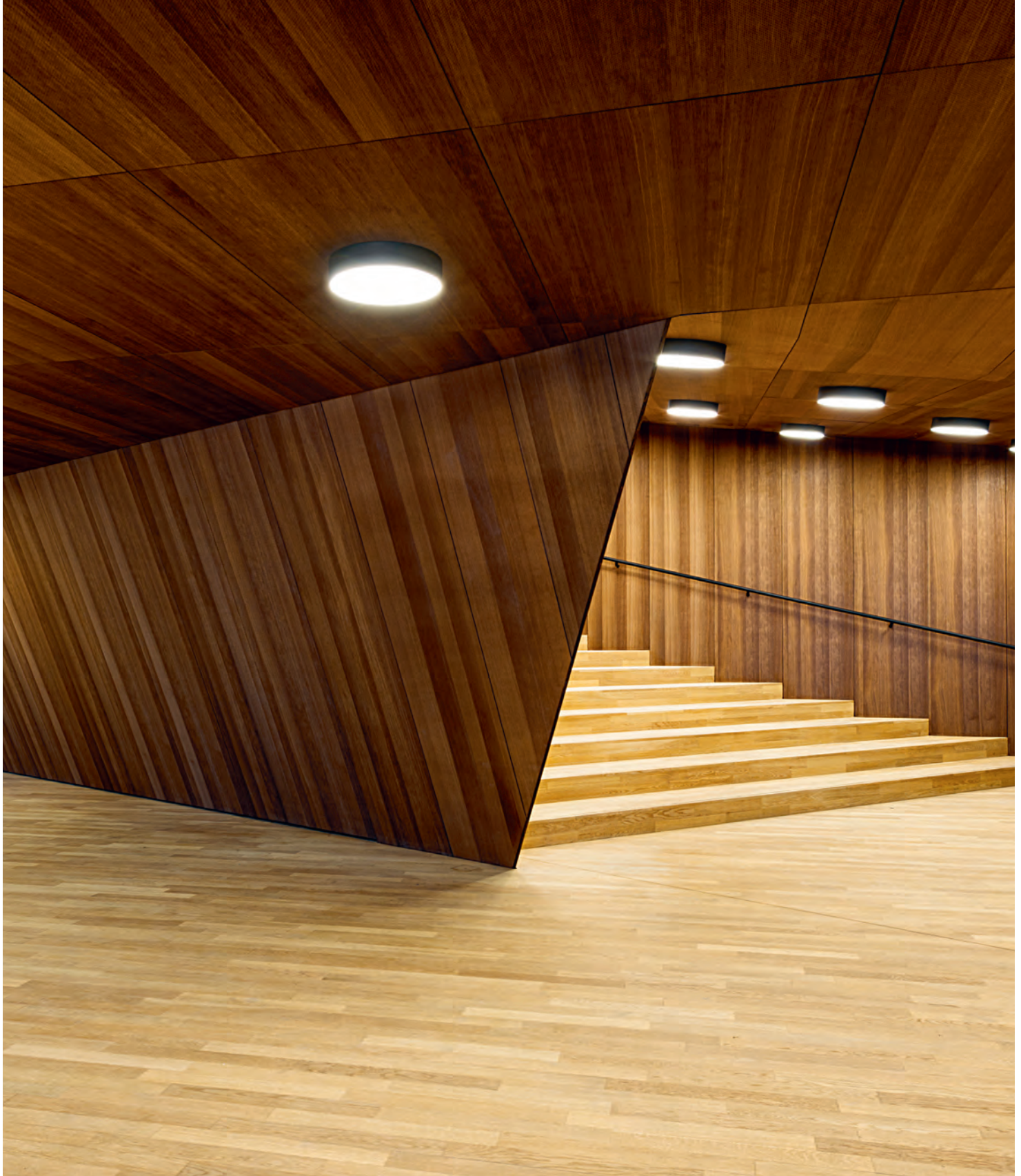


Photo: © Ingrid Fiebak



#### ▮ ELBPILHARMONIE, HAMBURG, GERMANY

The Elbphilharmonie in the middle of Hafencity is a new landmark in the cityscape of Hamburg. During construction of the Elbphilharmonie, Lindner AG was commissioned with the complete interior fit-out of all areas outside the large and small concert hall. In addition to the office and backstage areas, this included the access routes and entrances to the halls as well as the foyer in the small hall. The uncompromising demand for quality is reflected in the many customised designs. A 3D virtual reality plan of these was prepared in advance before going into production. An example of this is the stair balustrades made from a combination of solid oak and gypsum panels in the entrance to the Great Hall. The ceilings and walls in the small foyer are clad with non-combustible, real wood veneered FIREwood composite panels with a smoked oak surface.







**ARCHITECT**

Herzog & de Meuron, Basel, Switzerland

**OWNER**

Elbphilharmonie Bau KG, Hamburg, Germany

**SERVICES**

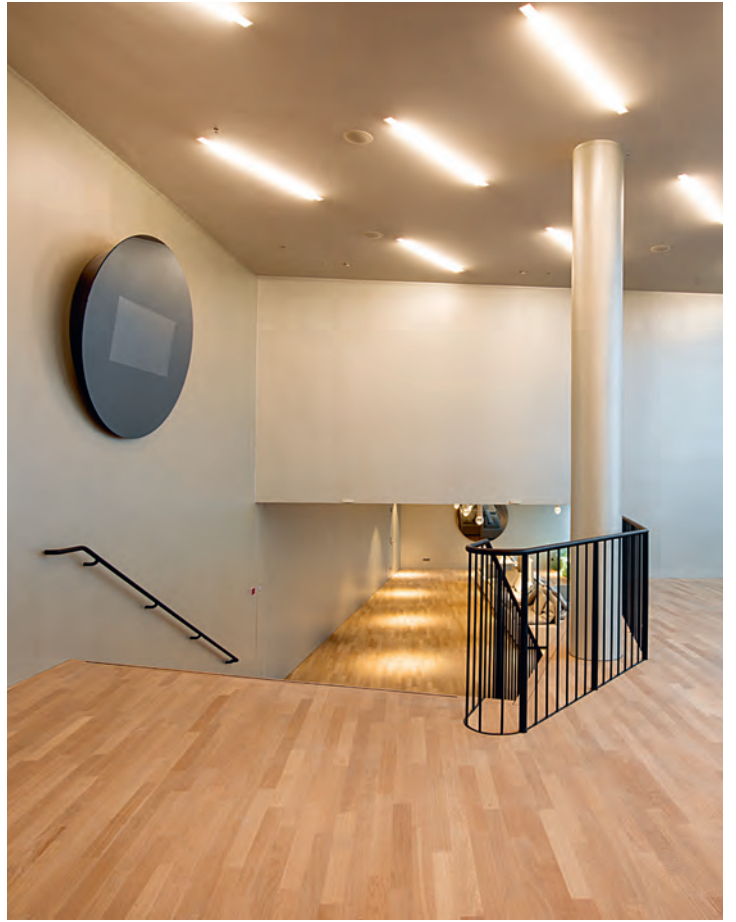
complete interior fit-out of the foyers and the access, office and backstage areas













#### ✎ JOHANN-SEBASTIAN-BACH-HALL, KÖTHEN, GERMANY

The city of Köthen in the heart of Saxony-Anhalt is located between the major cities of Magdeburg and Leipzig. The castle, which is located north of the historic old town, has become famous far beyond the city limits thanks to its concert hall, named after the famous composer Johann Sebastian Bach. Lindner Objektdesign was commissioned with the complete interior fit-out of the hall. In addition to the wall and ceiling cladding, this also included production and installation of wooden doors. These were manufactured in our own production facilities according to the requirements for fire-/smoke protection and sound insulation. The cladding and doors were veneered with cedar wood to create a homogeneous overall picture.





**ARCHITECT**

Busmann & Haberer Gesellschaft von Architekten mbH,  
Cologne, Germany

**OWNER**

Stiftung Dome und Schlösser in Sachsen-Anhalt, Leitzkau,  
Germany

**SERVICES**

complete interior fit-out of the hall, entrances, foyer and  
adjoining rooms





#### ➤ CONCERT ROOM OF THE WCCB, BONN, GERMANY

The World Conference Centre in Bonn was built for conferences and conventions. The World Climate Conference took place there in 2017, for example. Lindner Objekt design was responsible for construction of the concert room. Its modular design means it can be assembled and disassembled in various sizes as often as required. This mobile room, consisting of real wood veneer wall elements and rounded canopy ceilings, whose surface is also made of stained and varnished oak veneer, can be erected within a day. The low intrinsic weight and favourable fire protection properties of the elements once again demonstrate that exclusive ambience and the highest safety requirements can be easily combined with wood as the raw material.



Photo: © Sebastian H. Schroeder





Photo: © Sebastian H. Schroeder

**ARCHITECT**

Heinle, Wischer und Partner,  
Stuttgart, Germany

**OWNER**

Städtisches Gebäudemanagement  
Bonn, Germany

**SERVICES**

complete interior fit-out



Photo: © Sebastian H. Schroeder



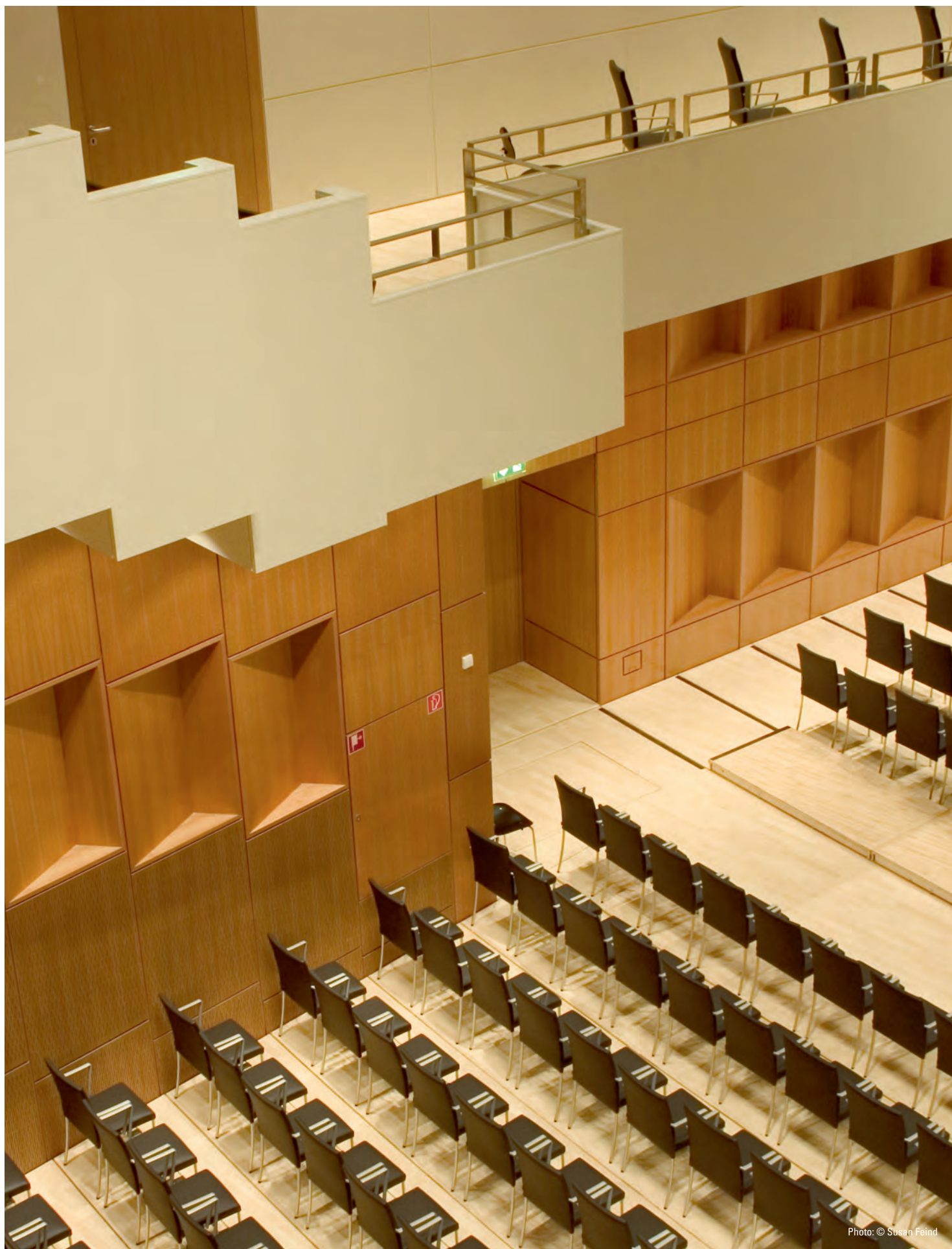










Photo: © LVR-ZMB/Stefan Arendt







Main Photo: Pierre-Boulez-Saal, Berlin, Germany | © Barenboim-Said-Akademie / Photo: Volker Kreidler

This work and all contents are protected by copyright. All rights reserved. Any reprinting or reproduction (even in extracts) in any form (print, photocopy or any other method) as well as storage, processing, reproduction and dissemination using electronic systems of any type, of the whole document or extracts, is not permitted without the express written permission of the publisher.







