



Flexible Fire Protection  
Barrier for Hollow Floors

# Lindner FIREport S 90/EI 90

# The Firestop Block for Optimal Safety



Lindner fire protection brick for sealing all penetrations



Height adjustable at any time



Lindner FIREport in installed condition  
(flat installation on adjacent floor)



Simple and short assembly

## Lindner FIREport S 90/EI 90

### Flexible Fire Protection Barrier for Hollow Floors

The Lindner FIREport is the first successfully tested combination bulkhead for hollow floors according to EN 1366-3. This fire protection solution ensures the secure passage of electrical cables, data cables, empty conduits, and pipes, combining the expertise of Lindner Isoliertechnik and Industrieservice in structural fire protection.

Thanks to its system-related flexibility, FIREport S 90/EI 90 can

be fully adapted to project-specific requirements: whether it's the ability to combine with raised or hollow floors, plasterboard or solid walls and fire doors, or the variably selectable bulkhead size – FIREport provides more planning freedom and safety, especially on escape routes.

The extremely slim load-bearing structure ( $\geq 40$  mm) of the fire partition consists of specially developed Lindner calcium sulphate panels. Even with

very low hollow floors, these still leave sufficient space for the media to pass through. Building authority-approved modular blocks ensure reliable sealing of the bulkhead area in the event of a fire. The bricks allow the subsequent passage of cables up to an occupancy of 60 % at any time with low minimum distances to the bulkhead frame, usually even without the need for additional fire protection measures.

## Advantages at a Glance

### Installation Variations & Dimensions

- The bulkhead size can be variably adapted to the respective number of penetrations. The maximum possible dimension of an opening is 385 x 490 mm (w x h).
- If the maximum number of ducts for a module is exhausted, up to 6 Lindner FIREport-H systems, up to a maximum width of 2,590 mm, can be lined up next to each other.
- Depending on the installation situation and installation position, the Lindner FIREport can be connected to the solid ceiling or to the solid floor on three sides in a space-saving manner with an even lower installation height.
- Installation on the floor, surface or ceiling

### Executions

- feed-throughs for individual cables, cable bundles, cable trays, plastic and metal pipes with and without insulation possible
- retrofitting possible without problems



### Floor

- Any hollow, raised or solid floor can be connected
- Any floor, manufacturer-independent, in any fire resistance class can be connected to the FIREport on both sides..
- can be covered with any desired floor covering
- height adjustable with special tested floor shoe
- If a floor is connected to the side, the height of the FIREport can be flexibly adjusted to the height of the floor. The height can also be adjusted to the floor at a later date.

### Door

- Depending on the building authority or conceptual requirements, any door can be arranged above the fire port. (T 0 - T 90, not manufacturer-specific, single and double leaf)

### Partition

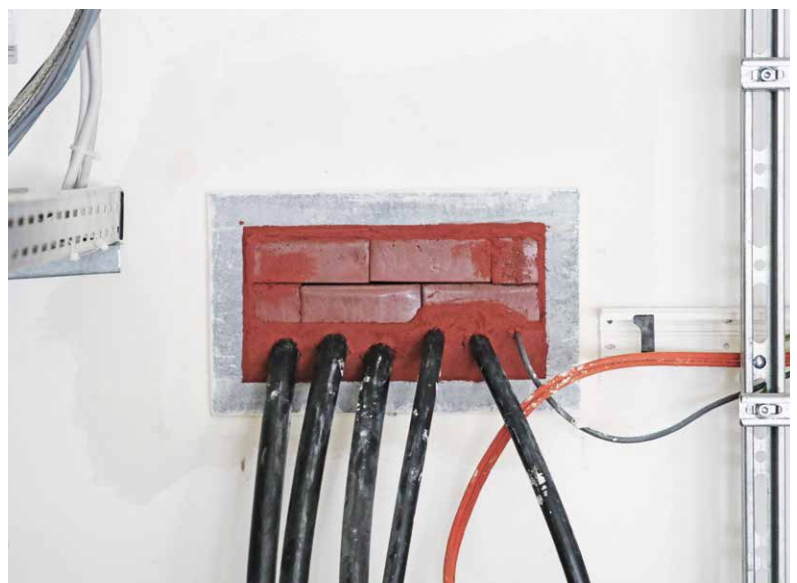
- Installation in any solid wall or drywall planked on both sides
- subsequent installation in wall surface possible without substructure

### Unique Selling Points

- statically load-bearing, tested in accordance with DIN EN 12825, can be walked on
- FIREport-H can be loaded directly
- load-bearing tested for over 30 minutes (port can be loaded with men and payloads for over 30 minutes in the same way as the F 30 floor in the emergency corridor)

### Fire protection

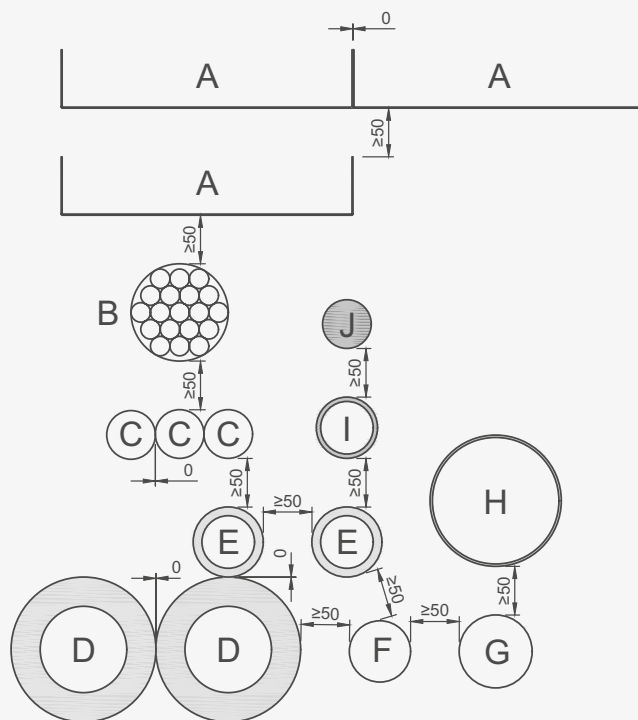
- fire resistance classes from F 30 - F 120 possible
- according to general type approval Z-19.53-2423



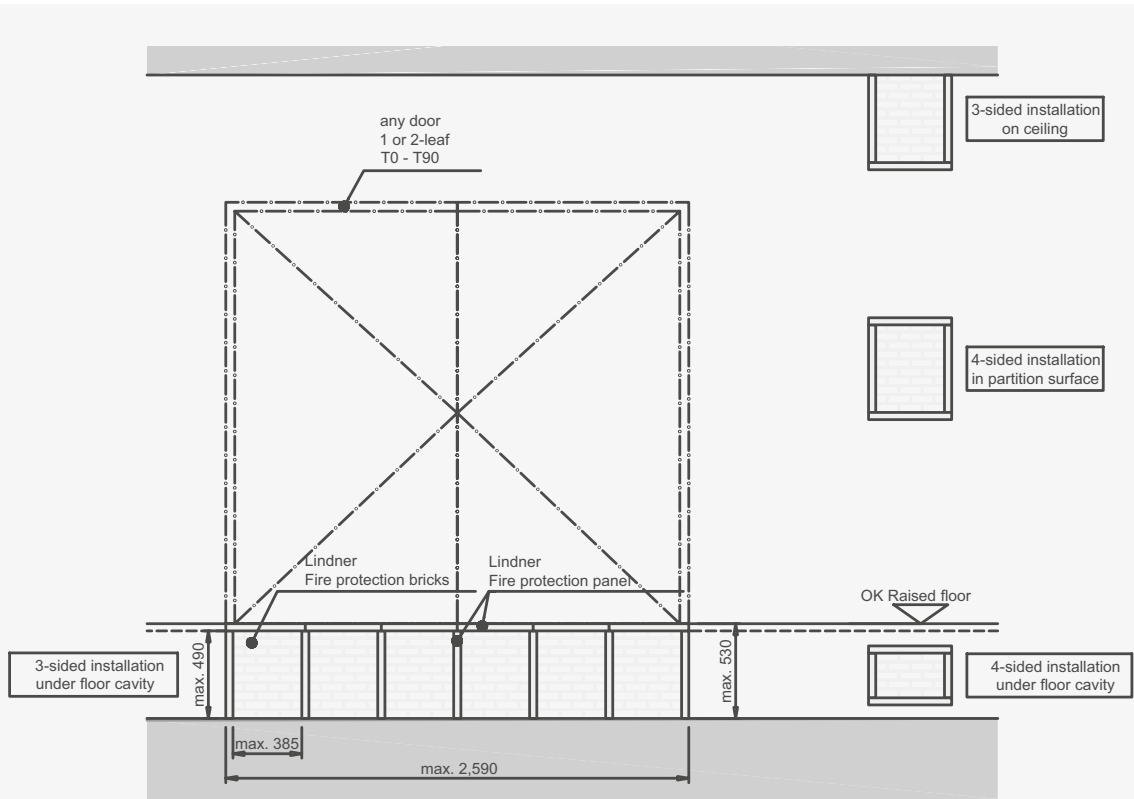
4-sided FIREport through a partition

## Overview of Minimum Distances and Maximum Sizes of Cable Penetrations

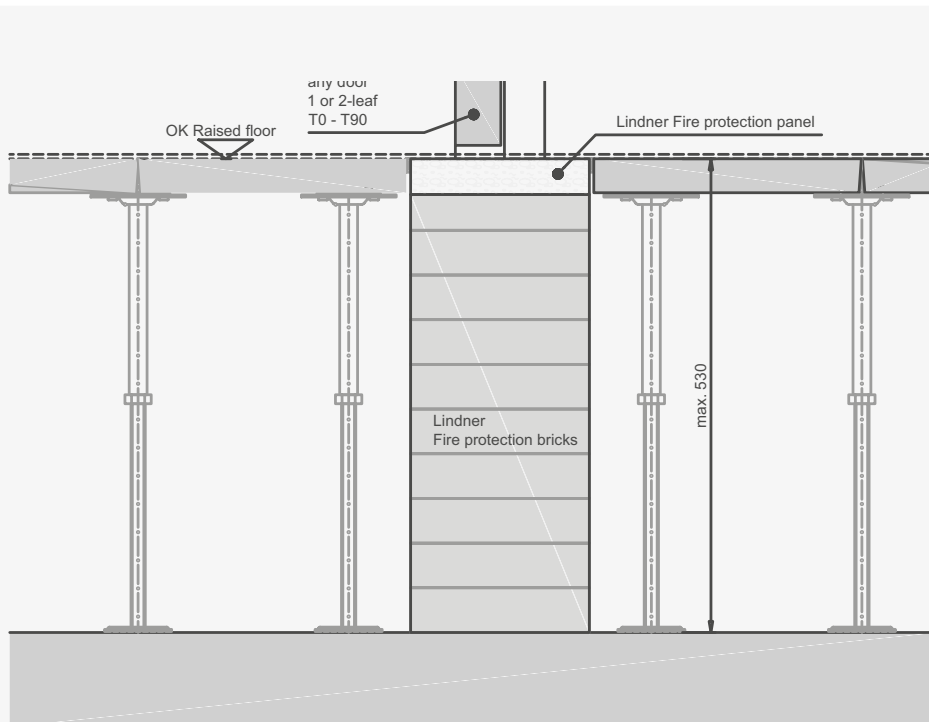
Pos.	Designation	Minimum distances	Exception
A	cable support structures $b \leq 300$ mm	50 mm	side by side: 0 mm to reveal: 0 mm/50 mm (depending on partition)
B	electrical installation pipe bundle $\varnothing \leq 100$ mm	50 mm	–
C	electrical installation pipes $\varnothing \leq 50$ mm	50 mm	to each other: 0 mm
D	non-combustible pipes with mineral wool insulation „Cu“-pipe $\varnothing \leq 88.9$ mm, „Fe“-pipe $\varnothing \leq 125$ mm	50 mm	to each other: 0 mm to E: 0 mm to reveal: 0 mm
E	non-combustible pipes with rubber insulation „Cu“-pipe $\varnothing \leq 54$ mm, „Fe“-pipe $\varnothing \leq 88.9$ mm	50 mm	to D: 0 mm to reveal: 0 mm
F	non-combustible pipes „Cu“-pipe $\varnothing \leq 63$ mm	50 mm	–
G	combustible pipes without measures $\varnothing \leq 75$ mm	50 mm	–
H	combustible pipes without measure $\varnothing \leq 130$ mm	50 mm	to reveal: 0 mm
I	aluminium composite tubes $\varnothing \leq 63$ mm	50 mm	–
J	coaxial cable $\varnothing \leq 50$ mm	50 mm	to reveal above: 0 mm



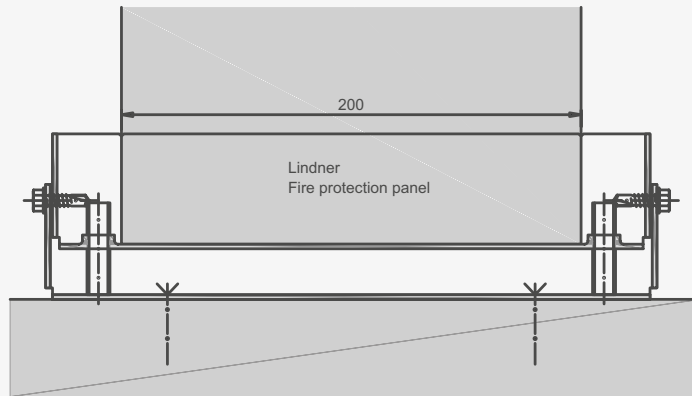
Minimum distances and maximum sizes of cable penetrations



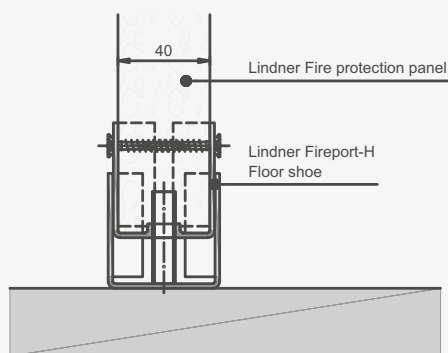
View of partition with FIREport elements



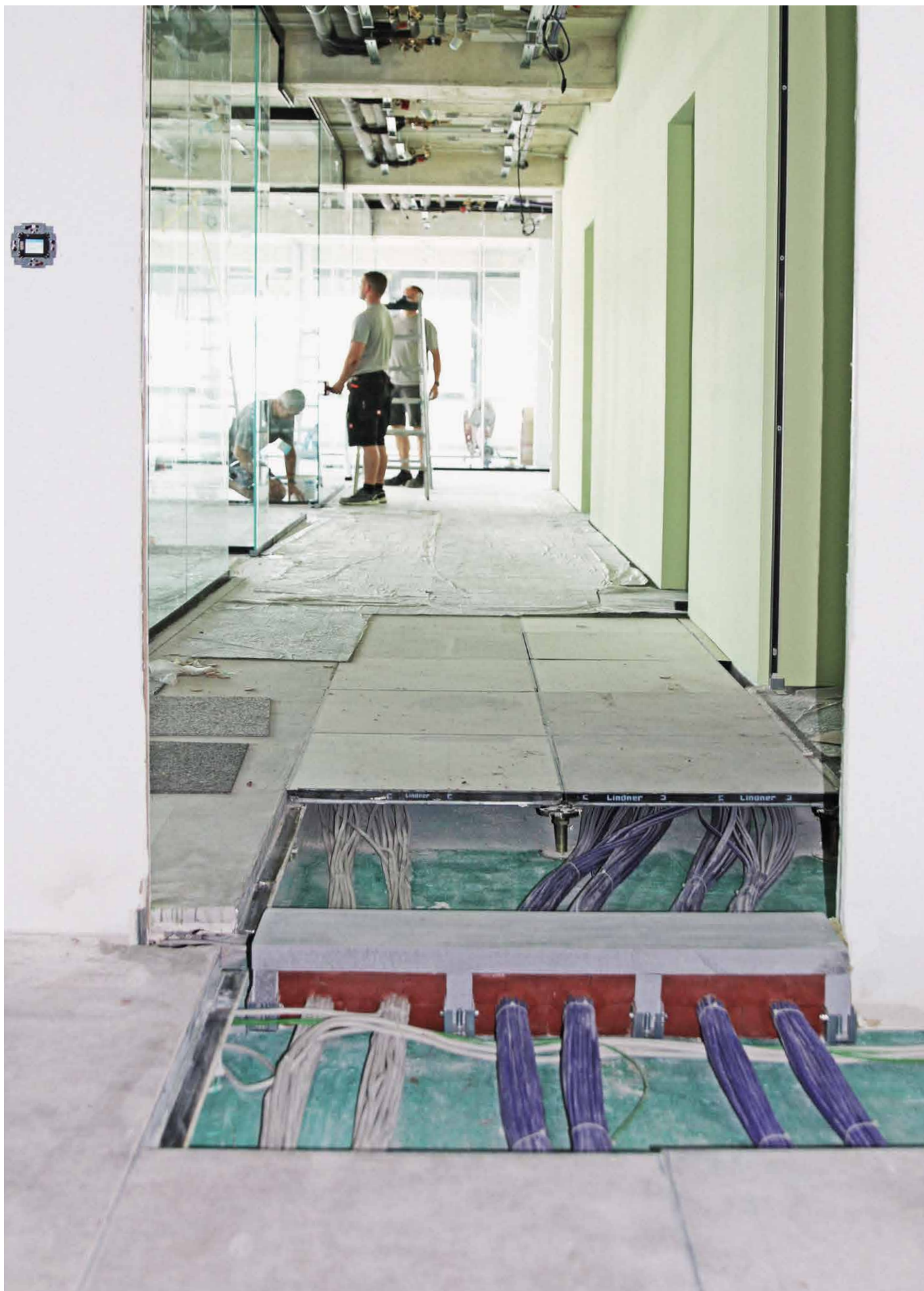
Vertical section through FIREport



Vertical cut through height adjustment shoe



Vertical cut through height adjustment shoe







Fire protection, Deutsches Museum, Munich, Germany



**We Go through  
the Fire for  
Your Concerns**

## Protected all around

With our extensive know-how in fire protection, we offer you efficient concepts and maximum safety.

By implementing the right structural fire protection measures, you can reduce potential risks and take important precautions. Our effective insulation products meet the highest safety standards and prevent the rapid spread of fire.

We realise special solutions for industrial and structural plants, hard and soft bulkheads in building services or spray coatings in operational facilities. Our project management offers all services in the field of passive fire protection for industrial and building services installations. Allow our trained and experienced fire protection specialists to advise you. Benefit from our fire protection solutions with the highest level of safety.

### Our Offer

- fire protection for ventilation systems
- fire protection for combustible/non-combustible pipelines
- cable bulkheads
- electrical cable ducts
- fire protection for steel structures
- fire protection for solid ceilings

## Innovations that Seal Efficiency

### Lindner Insulation Technology and Industrial Services

Whether you need to implement an efficient sound insulation solution or you are looking for suitable heat, cold or fire protection – within the scope of complex special projects, we develop innovative systems for all requirements. Your demanding ideas are a welcome challenge for us - we will develop the perfect concept for your project, just contact us. With our forward-looking technologies and based on our many years of experience, we make an economically and ecologically valuable contribution in the field of insulation technology – maximum efficiency for our customers and for nature.

### Projects at the Highest Level

Our employees are passionate about your project – this is the basic prerequisite for our consistently high quality. Furthermore, in our research and development department, we adapt our product to your individual needs and test it for its structural-physical properties. In this way, we ensure that the most unusual building projects meet the highest requirements at all times.

Even your special requests can be quickly and professionally realized due to our wealth of experience and global network – both in technical and creative aspects. Through regular checks as part of our integrated quality management, we guarantee efficient processes and innovative services. So you always enjoy the best quality. Which we are very proud of – after all, our solutions are the basis of our success.

### Building Sustainably with the Environment in Mind

How do we combine success and responsibility? Quite simply: by keeping nature in mind in every phase of the process, with foresight and consideration. For instance, we exclusively use ecologically tested and approved materials. In addition, our environmental management ensures the reduction of emissions and unnecessary energy consumption. For us, building with new solutions also means implementing ideas with environmental awareness – sustainably in all areas.

**Lindner Group**

Bahnhofstrasse 29 | 94424 Arnstorf | Germany  
[www.Lindner-Group.com](http://www.Lindner-Group.com)

PR\_FIREport/EN/1.2

