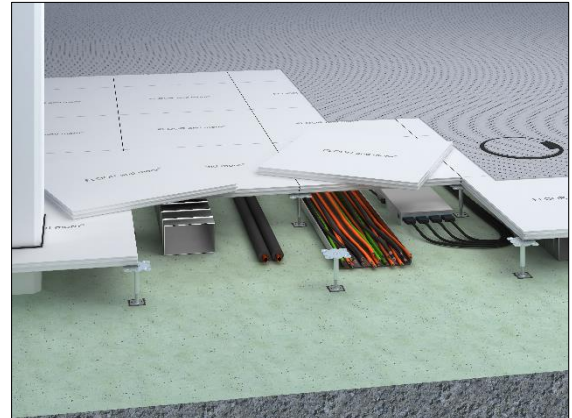




FLOOR and more® Dry hollow floor for high demands

The dry hollow floor system FLOOR and more® offers stability and state-of-the-art technology. The hollow floor panels consist of fibre-reinforced calcium sulphate. The gluing of the FLOOR and more® panels is made with a special tongue and grooving at the edges of the panels which are forming a closed load bearing layer. The substructure consists of height-adjustable zinc-coated steel pedestals from our own production which form the necessary cavity for installations.

- superb walking comfort
- very high loadability
- low system weight
- quick installation
- can be combined with other floor systems
- manufactured in Germany acc. to the highest quality and environment standards
- free choice of coverings



Samples for building portfolio

Banks, Cinemas and Theatres, Concert Halls, Gymnasiums, Museums, Places of Assembly, Sales Areas, Shopping Centres, Stadiums, Assembly Rooms, Broadcasting Rooms, Television Studios, Common Rooms, Facilities for Meetings, Conventions and Conferences, Offices, Stage and Studio Rooms, Library Rooms, Research Rooms, School, School of Higher Education, Airports, Subways and Tunnels, Train Stations, Hotels and Resorts, Restaurants and Canteens, Commercial Kitchens, Clinics and Hospitals, Laboratories, Operating Theatres, Production Facilities, Laboratories and Research Facilities, Power Plants, Entrance Areas, Escape Routes, Court Houses, Government Buildings, Cruise Liner and Ship Fit-out, Residential



Technical data

Weight	41 - 55 kg/m ²
Panel thickness	30 – 40 mm
Standard pedestal height	40 - 2,000 mm
Pedestal grid	600 mm x 600 mm

Statics

Load class	DIN EN 13213	2 - 5
Point load (breaking load)	DIN EN 13213	3 kN (6 kN) - 5 kN (10 kN)
Seismic safety		earthquake-proof construction possible



Fire protection

Reaction to fire performance of the carrier panel

Reaction to fire performance	DIN 4102-1	A2
Reaction to fire performance	DIN EN 13501-1	A1
Designation by the building authorities	DIN 4102-1	non-combustible
Designation by the building authorities	DIN EN 13501-1	non-combustible

Fire resistance

Fire resistance	DIN 4102-2	F30 possible with additional measures
Fire resistance	DIN EN 13501-2	REI 30 possible with additional measures REI 60 possible with additional measures

Acoustics

Building acoustics

Normalised flanking level differenc (depending on additional measures)	DIN EN ISO 10848-2	$D_{n,f,w}$	36 – 59 dB
Weighted sound reduction index (depending on additional measures)	DIN EN ISO 10140-2	R_w	62 – 64 dB
Reduction of impact sound pressure level (depending on additional measures)	DIN EN ISO 10140-1	ΔL_w	12 – 35 dB
Normalised flanking impact sound pressure level (depending on additional measures)	DIN EN ISO 10848-2	$L_{n,f,w}$	92 – 37 dB

Sustainability

Self-declaration	self-declaration in acc. with ISO 14021
Environmental product declaration	verified EPD in acc. with EN 15804 / ISO 14025
Circular Economy	Cradle to Cradle Certified® Silver
FSC	optional (TUEV-COC-000515)
French VOC Regulation	Emission class A+

Floor coverings

Suitability of covering	elastic coverings, textile coverings, parquet, ceramics, natural stone
-------------------------	--