



FLOOR and more[®] power

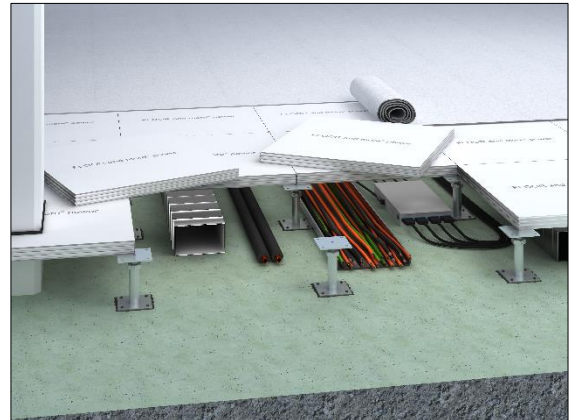
Dry hollow floor for heavy-duty areas

The dry hollow floor system FLOOR and more[®] power was developed especially for heavy duty areas. The hollow floor panels type power consist of fibre-reinforced calcium sulphate with optimised panel mixture and are optionally applied with steel sheet on the lower side. The gluing of the FLOOR and more[®] panels is made with a special tongue and grooving at the edges of the panels which are forming a closed load bearing layer. The substructure consists of height-adjustable zinc-coated steel pedestals from our own production which form the necessary cavity for installations.

- special panel composition
- reinforced hollow floor pedestals
- no reinforcement profiles necessary
- driveable with heavy motorised lifting equipment

Samples for building portfolio

Banks, Cinemas and Theatres, Concert Halls, Museums, Places of Assembly, Sales Areas, Shopping Centres, Gymnasiums, Stadiums, Assembly Rooms, Broadcasting Rooms, Television Studios, Common Rooms, Facilities for Meetings, Conventions and Conferences, Stage and Studio Rooms, Offices, Library Rooms, Research Rooms, School, School of Higher Education, Airports, Subways and Tunnels, Train Stations, Clinics and Hospitals, Laboratories, Operating Theatres, Production Facilities, Laboratories and Research Facilities, Power Plants, Entrance Areas, Escape Routes, Court Houses, Government Buildings, Commercial Kitchens, Restaurants and Canteens, Hotels and Resorts



Technical data

Weight	62 - 83 kg/m ²	
Panel thickness	40 - 44.5 mm	
Standard pedestal height	57 - 2,000 mm	
Pedestal grid	600 mm x 600 mm	

Statics

Load class	DIN EN 13213	6
Point load (breaking load)	DIN EN 13213	6 kN (12 kN) – 20 kN (40 kN)
Seismic safety		earthquake-proof construction possible



Fire protection

Reaction to fire performance of the carrier panel

Reaction to fire performance	DIN 4102-1	A2
Reaction to fire performance	DIN EN 13501-1	A1
Designation by the building authorities	DIN 4102-1	non-combustible
Designation by the building authorities	DIN EN 13501-1	non-combustible

Fire resistance

Fire resistance	DIN 4102-2	F30 possible with additional measures
Fire resistance	DIN EN 13501-2	REI30 possible with additional measures REI60 possible with additional measures

Sustainability

Self-declaration	self-declaration in acc. with ISO 14021 possible
Environmental product declaration	verified EPD in acc. with EN 15804 / ISO 14025 possible
Circular Economy	Cradle to Cradle Certified® Silver
FSC	optional (TUEV-COC-000515)

Floor coverings

Suitability of covering	heavy-duty coverings
-------------------------	----------------------