

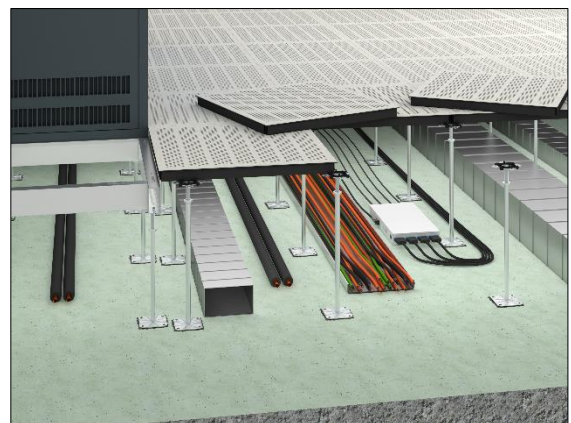


VENTEC

Raised floor as tubular frame construction

The raised floor system VENTEC is perfectly suited for the use in technical rooms, server rooms and data centres. The carrier panel consists of a welded tubular frame construction with powder coated surface. The perforation can be realized with slotted or round holes. Panels with slotted holes are available as standard versions with free cross-sections of 15 % and 23 %. Panels with round holes are available with cross-sections of 15 % to 38 %. On request partially perforated or patterned versions as well as other free cross-sections are available. The substructure consists of height-adjustable zinc-coated steel pedestals from our own production which form the necessary cavity for installations and gaskets for sound decoupling.

- free cross-section up to 38 %
- optionally round or slotted holes
- volume regulation sheets on the lower side of the panel possible
- possibility of combination with other Lindner raised loor panels



Samples for building portfolio

Data Centres, Utility Rooms, Assembly Rooms, Broadcasting Rooms, Television Studios, Common Rooms, Facilities for Meetings, Conventions and Conferences, Offices, Stage and Studio Rooms, Power Plants, Production Facilities, Clean Rooms, Laboratories and Research Facilities, Research Rooms, Library Rooms, School, School of Higher Education, Court Houses, Government Buildings, Banks, Museums, Sales Areas, Entrance Areas, Laboratories

Technical data

Weight	40 - 44 kg/m ²	
Panel thickness	30 - 38 mm	
Standard pedestal height	20 - 2,000 mm	
Pedestal grid	600 mm x 600 mm	
Dimensional deviation	class 1	
Earth resistance	≥ 5 x 10 ⁵ Ω	

Statics

Load and deflection class	EN 12825	2A - 5A
Point load (breaking load)	EN 12825	3 kN (6 kN) - 5 kN (10 kN)
Seismic safety		earthquake-proof construction possible

HVAC

Ventilation		375 - 2,500 m ³ /h
Free cross-section		15 - 38 %
Perforationstyp		R15, R24, R34, R38, L16, L23



Fire protection

Reaction to fire performance of the carrier panel

Reaction to fire performance	EN 13501-1	A1
Reaction to fire performance	DIN 4102-1	A2
Designation by the building authorities	EN 13501-1	non-combustible
Designation by the building authorities	DIN 4102-1	non-combustible

Floor coverings

Suitability of covering	elastic coverings, textile coverings, loose-laid tiles (coverings have to be suited for seepage ventilation or a perforation)
-------------------------	---