



F30 Swing-Down-Slide

LMD Fire Rated Metal Ceiling acc. to DIN 4102-2

The ceiling elements – with or without mineral wool – are positioned in G-profiles. They can be individually swung down and slid by means of a dismantling tool – no additional ceiling void is necessary. Up to three ceiling elements can be moved together to receive a large inspection opening. Thanks to an adjustable wall connection, an excellent compensation of tolerances on the wall is possible. Stable hinging hooks offer maximum security against unintended lifting.

- freely spanned construction
- very good compensation of tolerances on the wall is possible due to an adjustable wall connection
- maintenance option due to ceiling elements that can be individually operated, swung down and slid
- swung down ceiling elements can be moved together to receive a large inspection opening (approx. 2,500 x 2,000 mm)
- no additional ceiling void is necessary for maintenance works
- hygienic and easy to clean

Examples for areas of application

Healthcare: Clinics and Hospitals, Laboratories and Research Facilities

Work: Data Centres and IT facilities, Utility Rooms

Businesses, Recreation and Culture: Places of Assembly

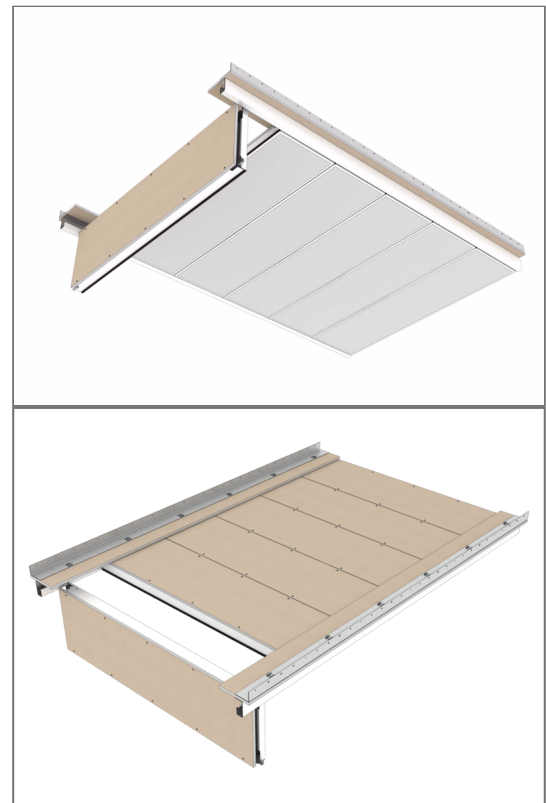
Public Areas: Escape Routes

Education: Research Rooms

Industry: Laboratories and Research Facilities

Hotels and Gastronomy: Hotels and Resorts

Public Institutions

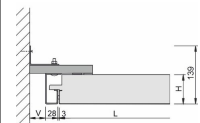
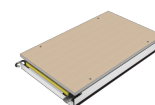


Ceiling elements

LMD F30-AB Typ 6

border operation with spatula

Length (L)	500 - 2500 mm 500 - 2200 mm
Width (B)	200 - 397 mm 200 - 460 mm
Height (H)	65 mm
Adjustment range	15 - 45 mm

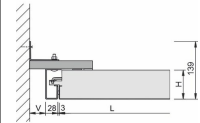
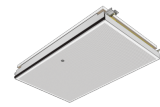


LMD F30-AB Typ 6 MB



centre operation with Allen key

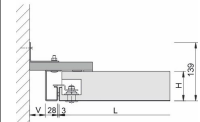
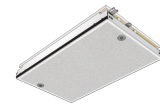
Length (L)	500 - 2500 mm 500 - 2200 mm
Width (B)	200 - 397 mm 200 - 460 mm
Height (H)	65 mm
Adjustment range	15 - 45 mm



LMD F30-AB Typ 6 locked

border operation with spatula, lockable

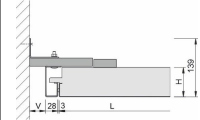
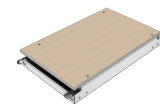
Length (L)	500 - 2500 mm 500 - 2200 mm
Width (B)	200 - 397 mm 200 - 460 mm
Height (H)	65 mm
Adjustment range	15 - 45 mm



LMD F30 A Typ 7.3

border operation with spatula

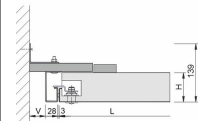
Length (L)	500 - 2500 mm 500 - 2200 mm
Width (B)	200 - 397 mm 200 - 460 mm
Height (H)	65 mm
Adjustment range	15 - 45 mm



LMD F30 A Typ 7.3 locked

border operation with spatula, lockable

Length (L)	500 - 2500 mm 500 - 2200 mm
Width (B)	200 - 397 mm 200 - 460 mm
Height (H)	65 mm
Adjustment range	15 - 45 mm



Technical details

Technical Details

Material	galvanised sheet steel
Serviceability	swing-down option slide option removable
Possible wall connections	plasterboard barrier plasterboard frieze plasterboard partitions bracket fastening massive walls concrete walls
Weight	38 - 42 kg/m ²



Component list

Bauteile

1	metal ceiling element
16b	U-washer
27a	G-profile 68
150	L-wall profile 43x65
278b	truss head screw with square neck and nut
811b	GKF/DF pre-cut 18 mm



Acoustics

Room acoustics

Sound absorber class	ISO 11654		E - B
Noise Reduction Coefficient	ASTM C 423	NRC	0.15 - 0.85
Evaluated Sound Absorption Coeff.	ISO 11654	α_w	0.15 - 0.85

Fire protection

Building material class

Building material class	EN 13501-1	A2 - s1,d0
-------------------------	------------	------------

Fire resistance

Fire resistance	DIN 4102-2	F 30 from above F 30 from below
-----------------	------------	------------------------------------

Durability

Durability

Exposure class	EN 13964	A
----------------	----------	---

Sustainability

Declarations

French VOC Regulation	Emission class A
Product Self-Declaration	A self-declaration in accordance with ISO 14021 is available. This contains extensive environmental information for planning, tenders and building certifications (LEED, DGNB, EU taxonomy).

Evidence



Green Level Certificate

High



Circularity: Some of the components can be reused/refurbished

Life Cycle Assessment: EPD according to ISO 14025 and EN 15804

Cradle to Cradle Certified®: no C2C Certified® label available

Surfaces

Surfaces

Powder coatings	COLOURline - Powder Coating MOODline - Powder Coating Deep Matt GRAPHICline - Digital Print
Perforations	BASICline - Standard Perforations REGULARline - Further Perforations

Additional equipment

Additional equipment

Luminaires	T38 17 - Recessed luminaire for metal fireproof ceilings T38 12 - Recessed luminaire for metal fireproof ceilings
Escape sign luminaires	SRB Compact 200 - Escape Sign Luminaire SRB Compact 300 - Escape Sign Luminaire
Loudspeakers	Monacor SPE-150/WS - Low Installation Loudspeaker ic audio DL EN54 - ELA Loudspeaker for Voice Alarm
Protective boxes	SK30 - Protective Box for Built-In Part Round/Square
Ventilation components	Strulik BCF - Damper Wildeboer BV90 - Fire Protection Valve (Series BV92) Trox L-KU-K30 - Fire Damper

Certification

Certificates

CE marking	The ceiling system is a harmonised construction product acc. to regulation (EU) No. 305/2011 (Construction Products Regulation) and EN 13964: Suspended ceilings - Requirements and test methods.
TAIM e.V.	The ceiling system fulfils the requirements of the "Technical Manual Metal Ceilings" (TMMC) of TAIM e.V. (Association of Industrial Metal Ceiling Manufacturers).



Applications



Project solutions

This product data sheet refers to the standard version of the product mentioned above. We would be happy to work with you to find the right solution for your project. Adapted to your building project, you will receive a perfectly matched system. Project-specific constructions and adaptations can be found in the offer documents.