



## F30 Drop-Slide

### LMD Fire Rated Metal Ceiling acc. to DIN 4102-2

The suspended fire rated metal ceiling impresses with ease of maintenance: every freely spanned ceiling element can be lowered and slid beneath other panels. No additional ceiling void is necessary for maintenance works. Moreover, no hanging ceiling elements affect the building traffic. This system offers an excellent compensation of tolerances on the wall.

- general building authority test certificate No. P-2101/336/18-MPA BS
- freely spanned construction
- very good compensation of tolerances on the wall is possible due to an adjustable wall connection
- maintenance option due to ceiling elements that can be individually operated, lowered and slid without tools
- lowered ceiling elements can be pushed together to receive a large inspection opening (approx. 3,000 x 2,000 mm)
- no disturbing, hanging ceiling elements in opened condition of the ceiling
- no additional ceiling void is necessary for maintenance works
- hygienic and easy to clean

#### Examples for areas of application

**Healthcare:** Clinics and Hospitals, Laboratories and Research Facilities

**Work:** Data Centres and IT facilities, Utility Rooms

**Businesses, Recreation and Culture:** Places of Assembly

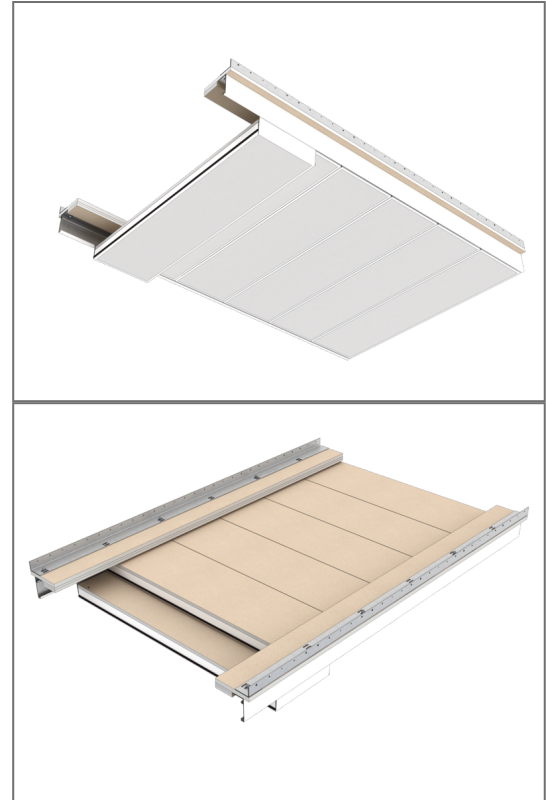
**Public Areas:** Escape Routes

**Education:** Research Rooms

**Industry:** Laboratories and Research Facilities

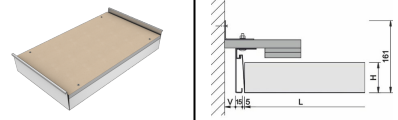
**Hotels and Gastronomy:** Hotels and Resorts

**Public Institutions**



#### Ceiling elements

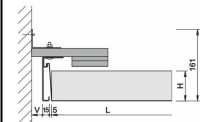
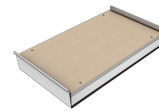
##### LMD F30-A Typ 10.1

Length (L)	500 - 2500 mm		
Width (B)	200 - 625 mm		
Height (H)	67.5 mm		
Adjustment range	10 - 39 mm		

##### LMD F30-AB Typ 10.1



Length (L)	500 - 2500 mm
Width (B)	200 - 625 mm
Height (H)	67.5 mm
Adjustment range	10 - 39 mm



## Technical details

### Technical Details

Material	galvanised sheet steel
Serviceability	drop-slide option without tools removable
Possible wall connections	plasterboard barrier plasterboard frieze plasterboard partitions bracket fastening massive walls concrete walls
Weight	38 - 42 kg/m <sup>2</sup>

## Component list

### Bauteile

1	metal ceiling element
16b	U-washer
150	L-wall profile 43x65
278b	truss head screw with square neck and nut
817g	GKF/DF moulded part 18 mm
862	drop-slide hook-on profile 100/15S



## Acoustics

### Room acoustics

Sound absorber class	ISO 11654		E - B
Noise Reduction Coefficient	ASTM C 423	NRC	0.15 - 0.85
Evaluated Sound Absorption Coeff.	ISO 11654	$\alpha_w$	0.15 - 0.85

## Fire protection

### Building material class

Building material class	EN 13501-1	A2 - s1,d0
-------------------------	------------	------------



## Fire resistance

Fire resistance	DIN 4102-2	F 30 from above F 30 from below
-----------------	------------	------------------------------------

## Durability

### Durability


Exposure class	EN 13964	A
----------------	----------	---

## Sustainability

### Declarations

French VOC Regulation	Emission class A
Product Self-Declaration	A self-declaration in accordance with ISO 14021 is available. This contains extensive environmental information for planning, tenders and building certifications (LEED, DGNB, EU taxonomy).

### Evidence

Green Level Certificate	<div>High </div> <p><b>Circularity:</b> Some of the components can be reused/refurbished</p> <p><b>Life Cycle Assessment:</b> EPD according to ISO 14025 and EN 15804</p> <p><b>Cradle to Cradle Certified®:</b> no C2C Certified® label available</p>
-------------------------	--

## Surfaces

### Surfaces

Powder coatings	COLOURline - Powder Coating MOODline - Powder Coating Deep Matt ARTline - Decorative Powder Coating GRAPHICline - Digital Print
Perforations	BASICline - Standard Perforations REGULARline - Further Perforations

## Additional equipment

### Additional equipment

Luminaires	T38 17 - Recessed luminaire for metal fireproof ceilings T38 12 - Recessed luminaire for metal fireproof ceilings
Escape sign luminaires	SRB Compact 200 - Escape Sign Luminaire SRB Compact 300 - Escape Sign Luminaire
Loudspeakers	Monacor SPE-150/WS - Low Installation Loudspeaker ic audio DL EN54 - ELA Loudspeaker for Voice Alarm



Protective boxes	SK30 - Protective Box for Built-In Part Round/Square
Ventilation components	Strulik BCF - Damper Wildeboer BV90 - Fire Protection Valve (Series BV92) Trox L-KU-K30 - Fire Damper

## Certification

### Certificates

CE marking	The ceiling system is a harmonised construction product acc. to regulation (EU) No. 305/2011 (Construction Products Regulation) and EN 13964: Suspended ceilings - Requirements and test methods.
TAIM e.V.	The ceiling system fulfils the requirements of the "Technical Manual Metal Ceilings" (TMMC) of TAIM e.V. (Association of Industrial Metal Ceiling Manufacturers).

## Applications



## Project solutions

This product data sheet refers to the standard version of the product mentioned above. We would be happy to work with you to find the right solution for your project. Adapted to your building project, you will receive a perfectly matched system. Project-specific constructions and adaptations can be found in the offer documents.