



AirBeam Invisible

Invisible Chilled Beam

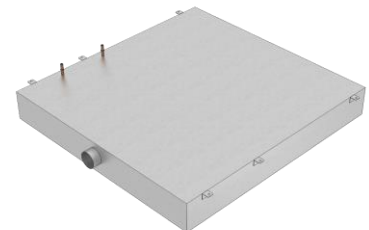
The chilled beam AirBeam is integrated into Plafotherm® heated/chilled ceilings or Lindner LMD metal ceiling systems and can be realised in various designs. AirBeam Invisible is completely integrated into the ceiling panel and is not visible from the room side. It is additionally connected to a central air supply machine. Thanks to the targeted air circulation through supply air, high capacities can be achieved with this product.

- element integrated into ceiling panel, not visible
- additional connection to a central air supply machine
- high capacities thank to room air cooling



Technical data | Chilled beam

Length (L)	1,100 mm
Width (B)	1,150 mm
Height (H)	170 mm
Weight	30 - 40 kg
Ventilation connection	DN 80, DN 100
Volume flow rate	50 m³/h
Pressure	100 Pa
Waterside pipe connection	12 mm copper pipe
Pressure resistance	16 bar



Technical data | Ceiling panel

Length (L)	1,200 mm
Width (B)	1,200 mm
Perforation	REGULARline Rd 1,6-25, REGULARline Rv 1,8-20, REGULARline Rd 3,0-30

Fire protection

Building material class

Manufactured from non-combustible materials



Durability

Exposure class	DIN EN 13964	A
----------------	--------------	---

HVAC

Heating and cooling

Ventilation side pressure	100 Pa
Ventilation side volume flow rate	50 m ³ /h
Waterside nominal cooling capacity (10 K) according to EN 14240	300 - 450 W/unit

Combinable with

Metal ceilings	<u>LMD-B 100</u>
Heated/Chilled ceilings	<u>Plafotherm[®] B 100</u> <u>Plafotherm[®] B/E AirHybrid[®]</u>

Project solutions

This product data sheet refers to the standard version of the product mentioned above. We would be happy to work with you to find the right solution for your project. Adapted to your building project, you will receive a perfectly matched system. Project-specific constructions and adaptations can be found in the offer documents.