



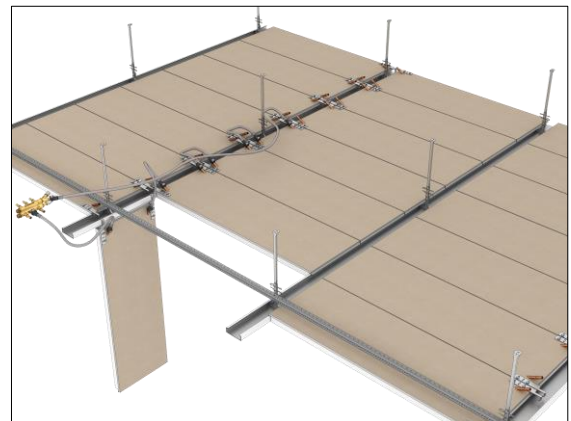
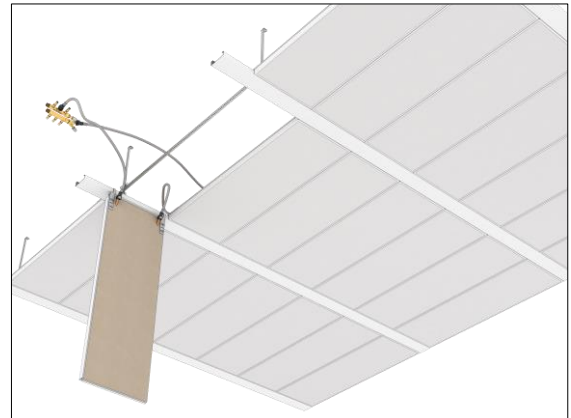
## Plafotherm® B 100 SD

Linear Heated and Chilled Post Cap Ceiling, longitudinally sound-reduced

### Product description

This longitudinally sound-reduced post cap ceiling creates a pleasant room climate. It is the perfect solution to fasten partitions and offers great freedom in office design - no additional ceiling bulkheads are required. The visible linear post caps can be used as design element or for the integration of installations. The space-saving system can easily be opened: the ceiling panels can be operated without the need for any tools. Even round or curved building shapes can be realised. A combination of thermally active and passive areas is possible.

- no additional ceiling bulkheads required
- post cap ceiling with tested longitudinal sound reduction
- heating/cooling by means of radiation creates a pleasant room climate
- flexibility thanks to the combination of thermally active and passive areas
- visible linear post caps as design elements
- individual room layout thanks to the possibility to fasten partitions to post caps
- post caps can be used for technical installations or luminaires
- space-saving ceiling system with low construction height
- round, curved building shapes can be realised thanks to radially installed post caps and trapezoidal ceiling panels
- easy maintenance option due to ceiling panels that can be individually operated without tools
- hygienic and easy to clean



### Project solutions


This product data sheet refers to the standard version of the product mentioned above.

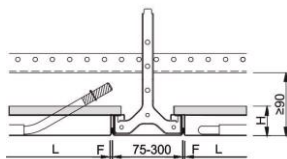
We would be happy to work with you to find the right solution for your project. Adapted to your building project, you will receive a perfectly matched system. Project-specific constructions and adaptations can be found in the offer documents.



## Ceiling elements

<b>Plafotherm® B 100 SD type 2</b>		
<b>Lay-In with Hook-On edge</b>		
Length (L)	500 - 1,500 mm	500 - 1,800 mm
Width (B)	200 - 700 mm	200 - 500 mm
Height (H)	≥ 43 mm	
Joint width (F)	3 mm	

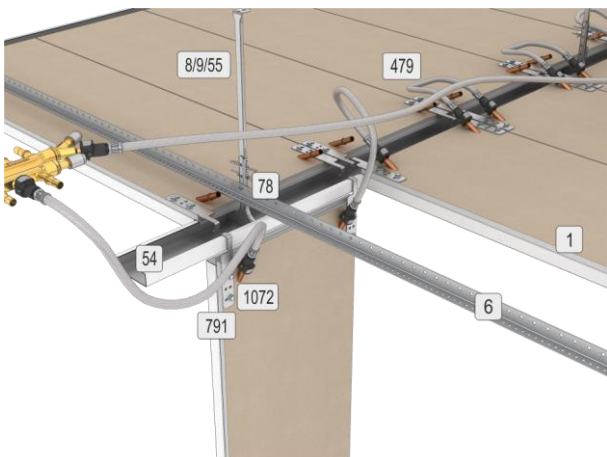




## Technical data

Material ceiling panel	galvanised sheet steel
Weight	approx. 24 - 26 kg/m <sup>2</sup> (without fixtures/installations)
Serviceability	removable without tools
Wall connection options	L-angle, shadow gap trim

## Component list

1	metal ceiling panel	
6	L-profile 28	
8/9/55	vernier suspension	
54	C-post cap profile	
78	self-drilling screw hexagon head	
479	PlafoTube® connecting/connection hose	
791	installation hook	
1072	drilling screw	

## Acoustics

<b>Room acoustics</b>			
Rated sound absorption coefficient	DIN EN ISO 11654	$\alpha_w$	0.50 (M) - 0.50 (LM)
Sound absorption class	DIN EN ISO 11654		D
Noise Reduction Coefficient	ASTM C 423	NRC	0.60 - 0.70
<b>Building Acoustics</b>			
Rated normalised flanking level difference	DIN ISO 10848-2	$D_{n,f,w}$	43 - 62 dB



## Fire protection

### Fire stability

Fire stability	EN 13501-2	30 minutes
----------------	------------	------------

## Durability

Exposure class	DIN EN 13964	A
----------------	--------------	---

## HVAC

### Heating and cooling

Heating and cooling technology	Plafotherm® Cu
Nominal cooling capacity (10 K) according to EN 14240 in relation to the active area	104 W/m²
Nominal heating capacity (15 K) according to EN 14037:2003 in relation to the active area	116 W/m²

## Sustainability

Product self-declaration	Self-declaration according to ISO 14021 possible
Environmental product declaration	EPD according to EN 15804 / ISO 14025

## Surfaces

Powder coatings	<u>COLOURline – Powder coating</u> <u>MOODline – Powder coating, deep matt</u> <u>ARTline – Decorative powder coating</u> <u>GRAPHICline – Digital print</u>
Perforations	<u>BASICline – Standard perforations</u> <u>REGULARline – Further perforations</u>

## Certification

CE marking	The ceiling system is a harmonised construction product acc. to regulation (EU) No. 305/2011 (Construction Products Regulation) and EN 13964: Suspended ceilings – Requirements and test methods.
TAIM e. V.	The ceiling system fulfils the requirements of the "Technical Manual Metal Ceilings" (TMMC) of TAIM e. V. (Association of Industrial Metal Ceiling Manufacturers).



## Additional equipment

Hydraulic components

Plafotube® MQC – Connecting/Connection hose with  
MultiQuickConnect  
Fittings – Distribution system

## Applications



© Oliver Jaist



© Oliver Jaist



© Eric Durand



© Marc Hérítier