

Biocenter

Copenhagen, Denmark





© Lindner, Arnstorf (D)

Project Description

Lindner fitted glazed partition walls and metal ceilings to this project.

General

Building Type	Schools, Public and institutional buildings
Company Division	Lindner SE International Projects Contracting
Completion	2005 - 2006
Client	Universität Kopenhagen
Architect	KHR Arkitekter A/S

Completed Works

- **Partitions**

Partition Systems Glass

Wall and ceiling panels

Doors for Partition Systems



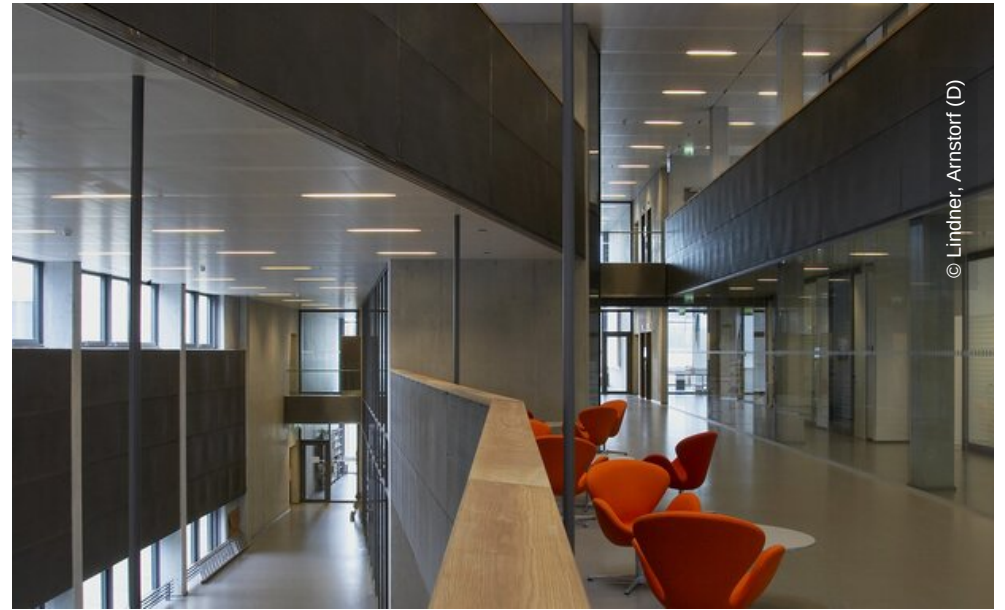
© Lindner, Arnstorf (D)



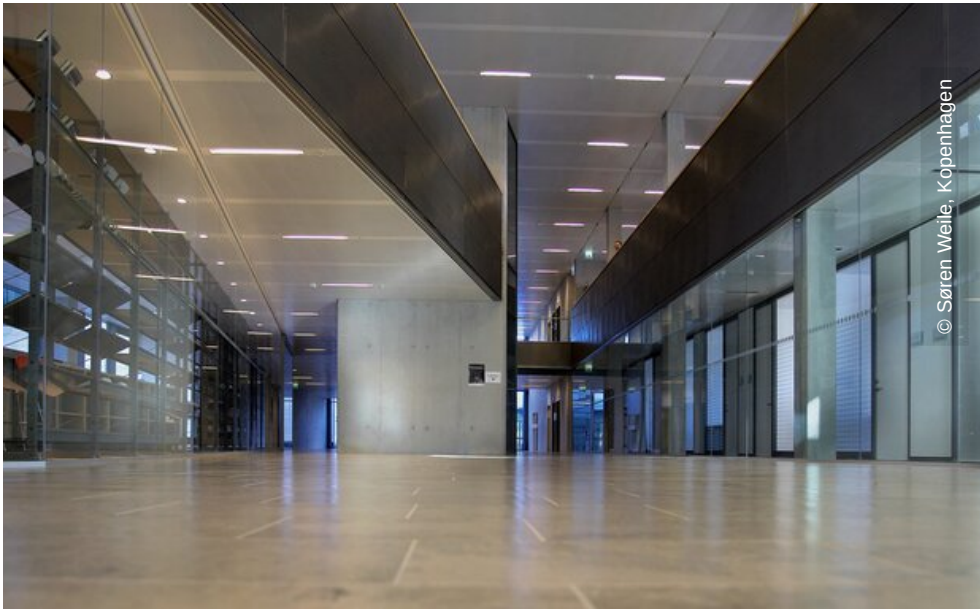
© Lindner, Arnstorf (D)



© Lindner, Arnstorf (D)



© Lindner, Arnstorf (D)



© Søren Weile, København