

30 Crown Place

London, United Kingdom





© Norman Childs Photography

Project Description

Being a striking addition to the London skyline this Head Quarters building was built at an important location close to the Liverpool Street Station. For this project Lindner produced and manufactured several thousand square metres of curtain wall, scenic lift shaft glazing, glass balustrades plus a glass roof to the atrium.

General

Building Type	Office Buildings, Industrial and commercial construction
Company Division	Lindner Fassaden GmbH,
Completion	2006 - 2009
Client	City Offices Real Estate (CORE)
Architect	Horden Cherry Lee Architects Ltd

Completed Works

- **Facades**



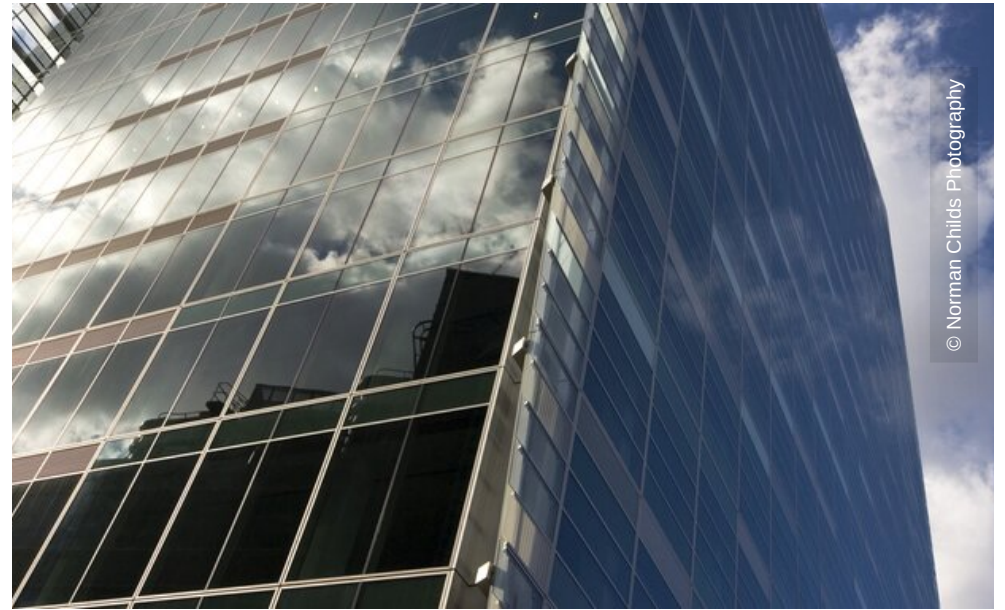
© Norman Childs Photography



© Norman Childs Photography



© Norman Childs Photography



© Norman Childs Photography



© Lindner AG, Arnstorf



© Lindner, Arnstorf (D)