

Lujiazui Financial Tower

Shanghai, China

 **Lindner**



© Lindner, Arnstorf (D)

Project Description

The 21storey office building is located in the urban district of Pudong. Lindner fitted a heating and cooling system, which creates a comfortable interior climate for the 2.500 employees, working each day in this building. Remarkable energy savings can be achieved with this system.

General

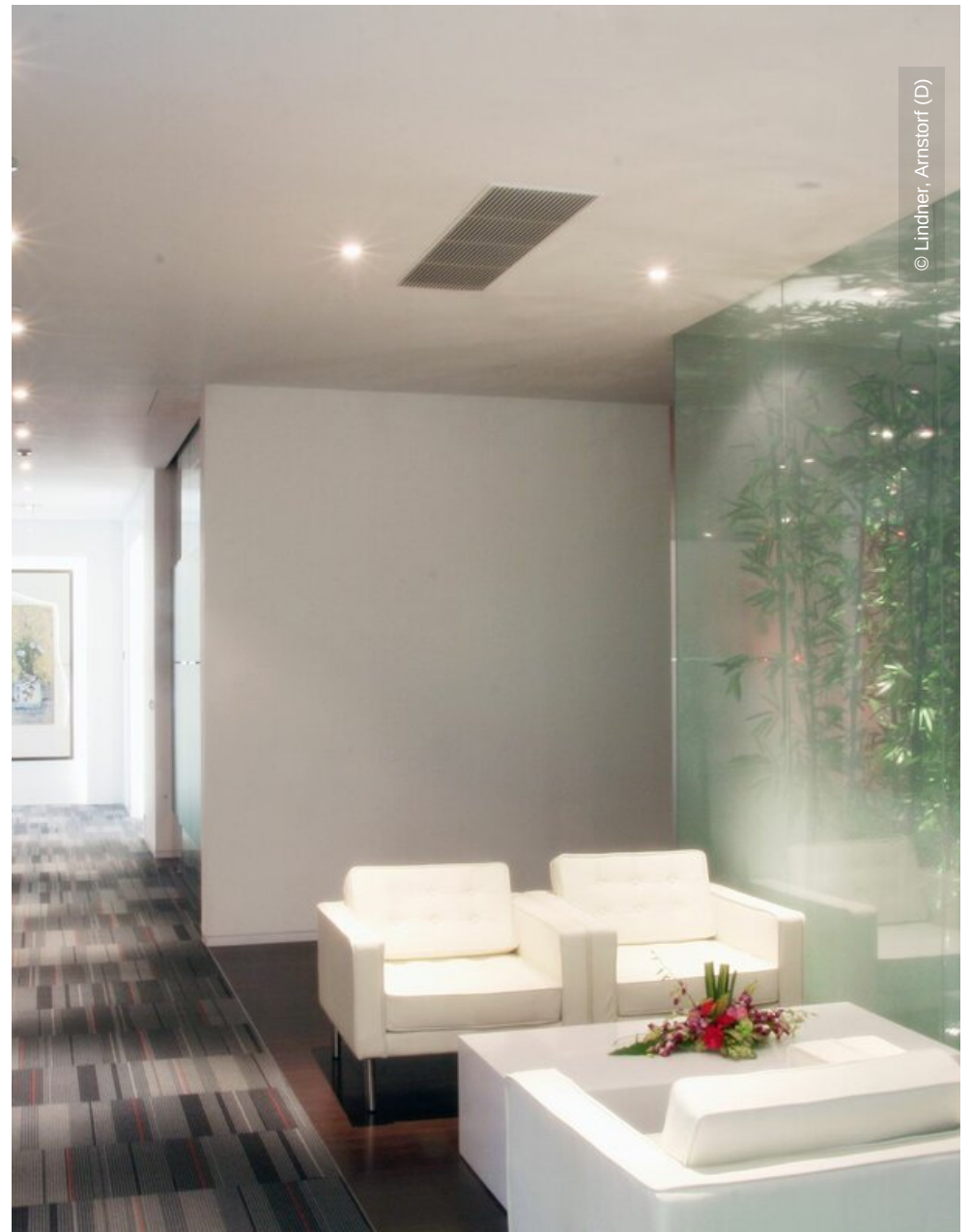
Building Type	Office Buildings, Industrial and commercial construction
Completion	2009 - 2010
Client	Lujiazui Group
Architect	Haipo Architects

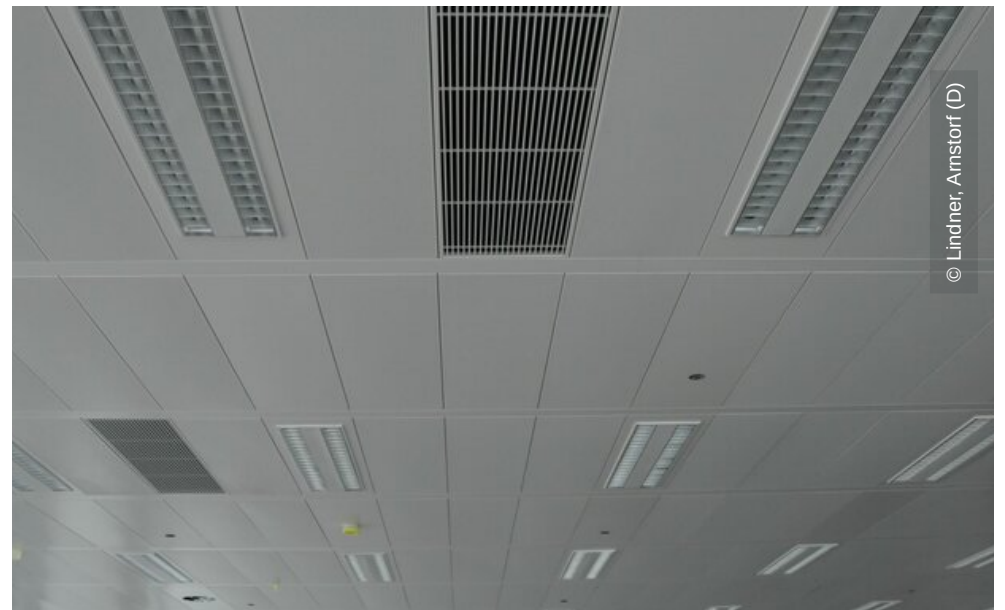
Completed Works

- **Ceilings**

Heated and Chilled Post Cap Ceilings

Plafotherm® B 100







© Lindner, Arnstorf (D)