

# **BFG Gent**

Gent, Belgium

 **Lindner**



© Lindner, Arnstorf (D)

# Project Description

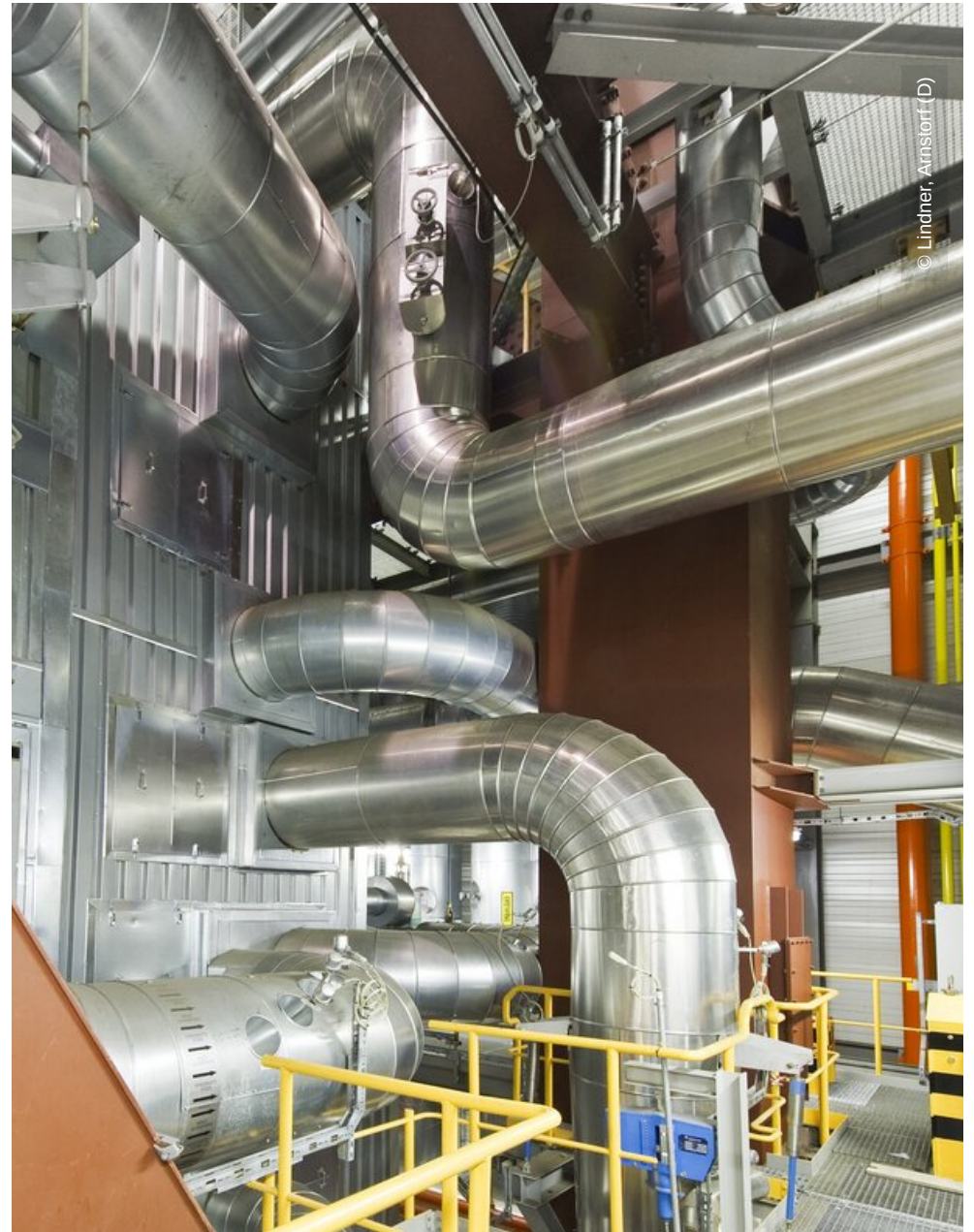
Lindner insulated the entire blast furnace gas power plant with a surface of 29,000 square metres. Our insulation works included the heat and sound insulation of flue gas-, hot air-, BFG-channels, boiler, boiler porches, as well as all tubes and components with wire netting mats and galvanized sheet metal plates.

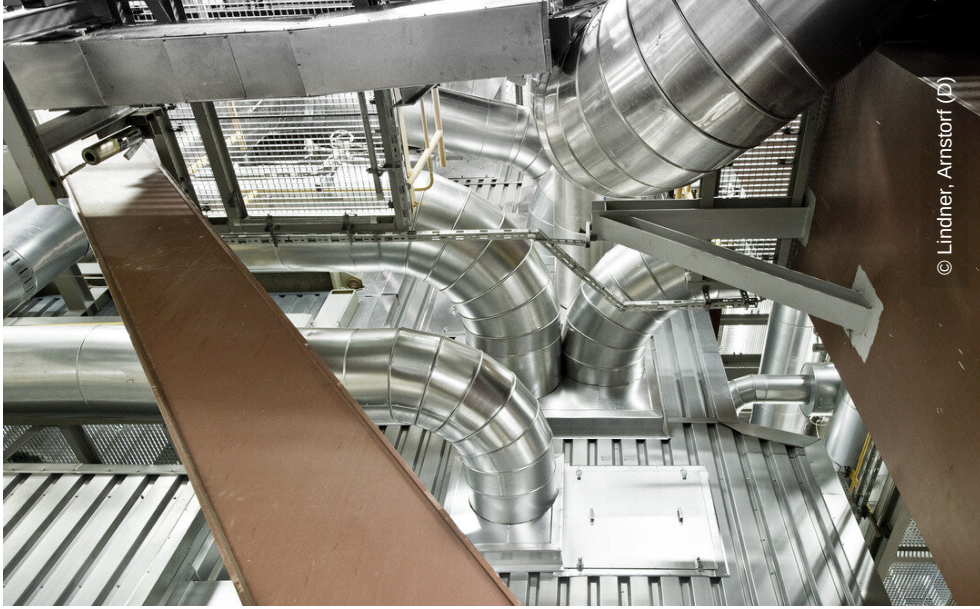
## General

|                         |                           |
|-------------------------|---------------------------|
| <b>Building Type</b>    | Power Plants              |
| <b>Company Division</b> | Lindner Isoliertechnik &  |
| <b>Completion</b>       | 2009 - 2010               |
| <b>Client</b>           | Electrable                |
| <b>Architect</b>        | Hitachi Power Europe GmbH |

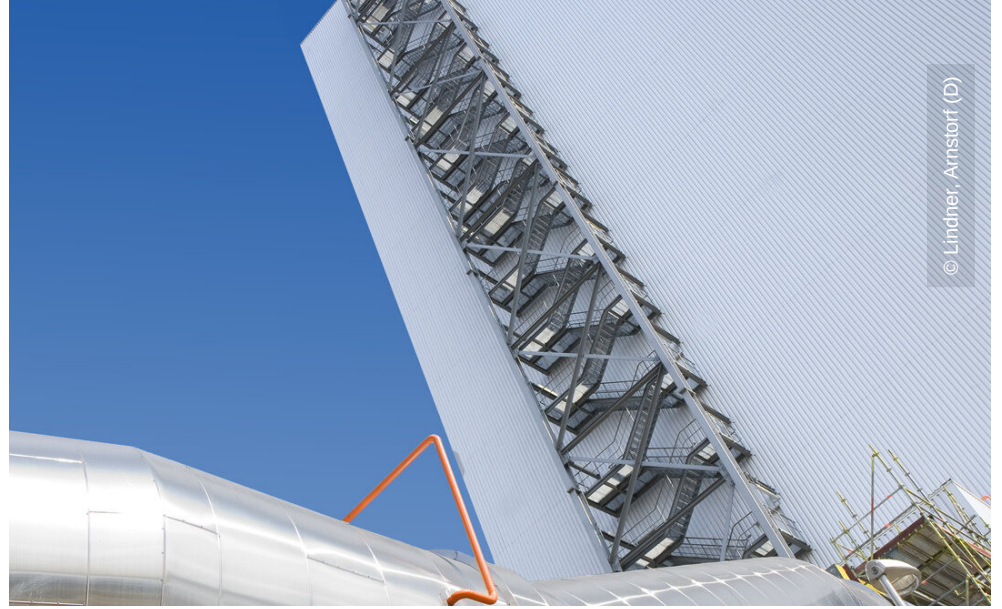
## Completed Works

- Insulation Engineering





© Lindner, Arnstorf (D)



© Lindner, Arnstorf (D)