

# Baufeld Nord 1

Frankfurt, Germany





© Lindner, Arnstorf (D)

# Project Description

Baufeld Nord 1 is the first office building erected in Frankfurt's Europe district. The sustainability of Baufeld Nord 1 is supported by the thermal function of four green atriums. The Lindner Group provided unitized curtain walls at the main envelope and the atrium, glass facade at the entrance hall and the lift, as well as at the north side of the building. A highlight of the building is a movable terrace roof.

## General

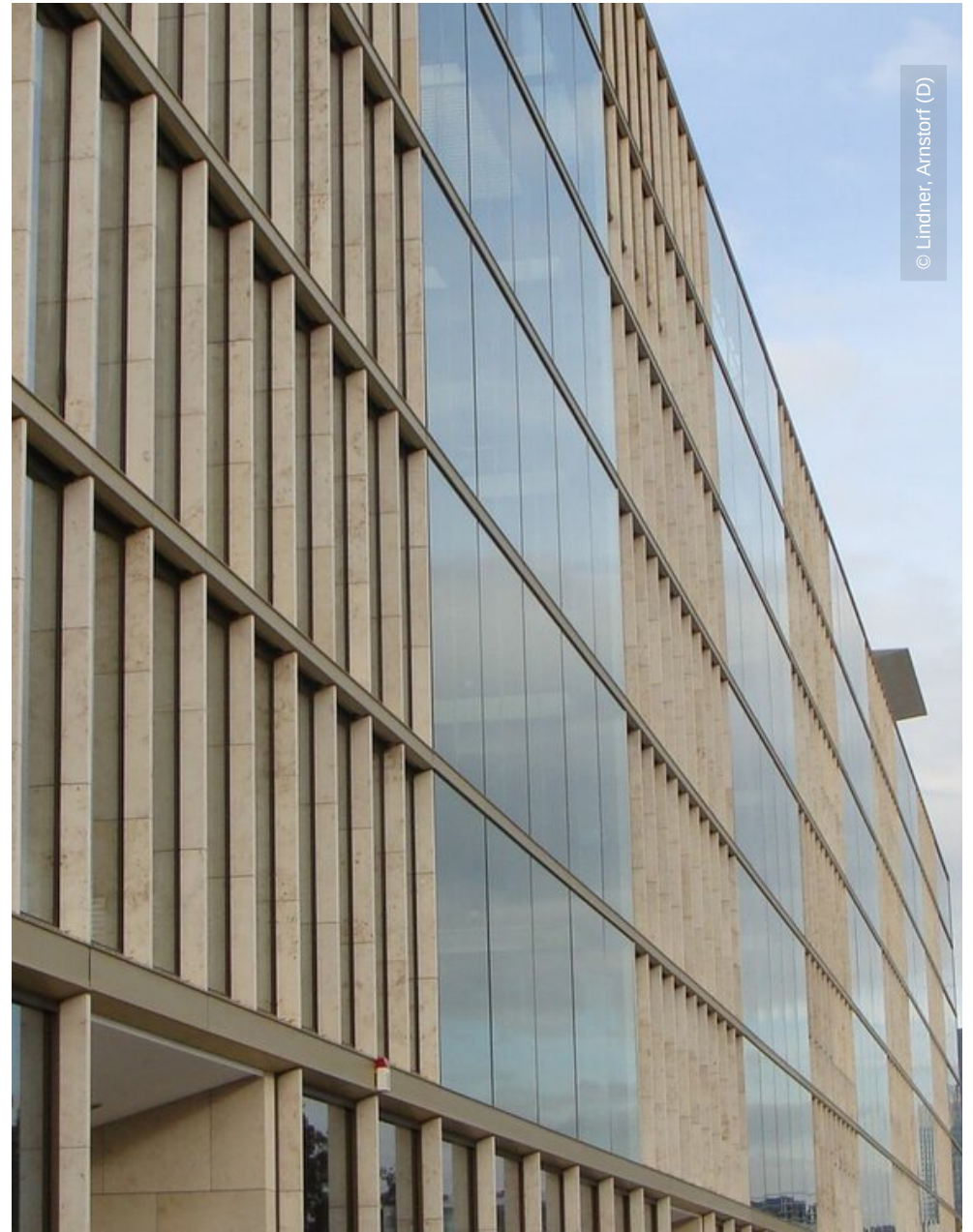
<b>Building Type</b>	Office buildings
<b>Company Division</b>	Lindner Fassaden GmbH,
<b>Completion</b>	2009 - 2010
<b>Client</b>	Vivico Frankfurt Nord 1 Projekt GmbH & Co. KG
<b>Architect</b>	schneider + schumacher Architekturgesellschaft mbH

# Completed Works

- **Facades**



© Lindner, Arnstorf (D)



© Lindner, Arnstorf (D)

