

HDI-Gerling headquarters

Hannover, Germany





© Lindner, Artsonn (D)

Project Description

The property insurance company „HDI-Gerling“ plans to move into this brand new 5-storey building in autumn 2011. The new headquarters merges the seven former offices in Hanover and offers space for approx. 2000 work places. Being HDI-Gerling’s reliable partner, Lindner was responsible for a major part of the interior fit-out.

Calcium Sulphate Panels
NORTEC

- **Ceilings**
Heated and Chilled Canopy Ceilings
- **Dry lining**
Plasterboard ceiling systems
Plasterboard partition systems

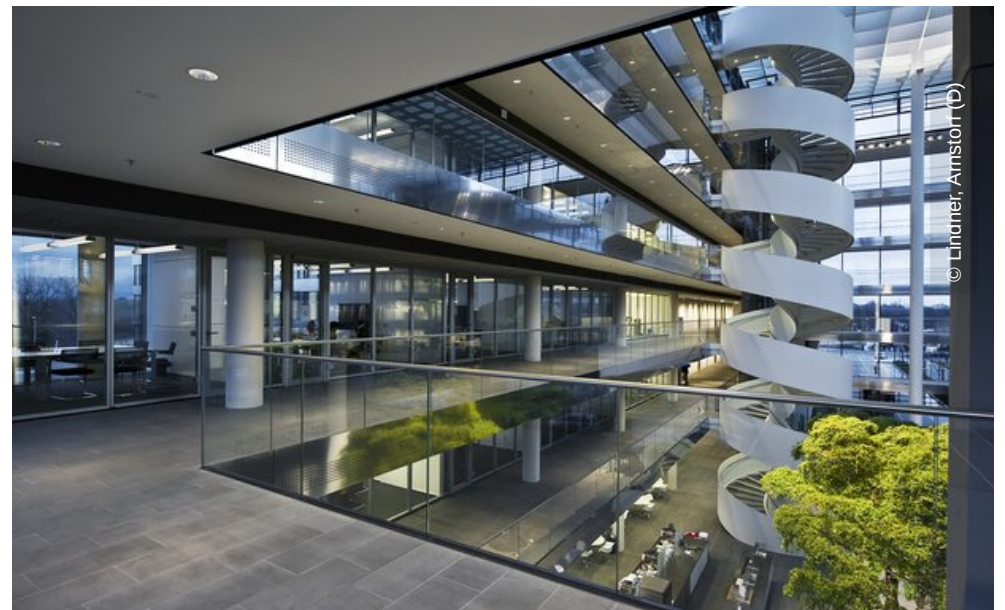
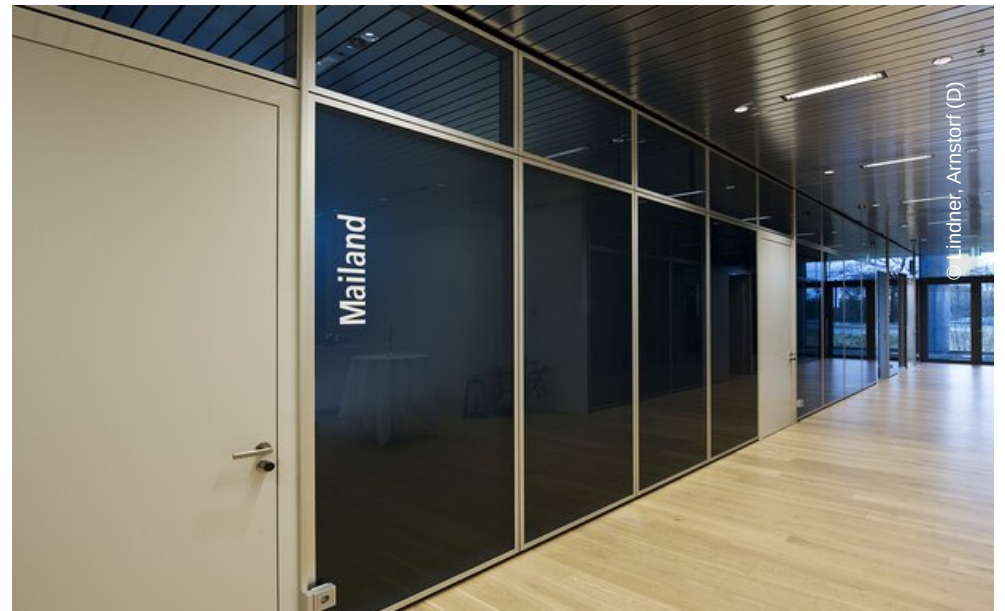
General

Building Type	Office Buildings, Industrial and commercial construction
Company Division	Lindner SE Fit-Out North.Northwest Germany, Lindner SE Floors, Lindner SE Partitions, Lindner SE Heated and Chilled Ceilings
Completion	2010 - 2011
Client	HDI-Gerling Industrie Versicherung AG
Architect	Ingenhoven Architects

Completed Works

- **Partitions**
Partition Systems Full Panel
Lindner Logic 100 Metal
Partition Systems Glass
Doors for Partition Systems
- **Floors**
Nasshohlboden
CAVOPEX





© Lindner, Arnstorf (D)

