

# Munich Re

Munich, Germany





© Xaver Lockau

# Project Description

The Munich Re planned a new office building and the refurbishment of an existing office area on its property in the Mandlstraße 3-5 in Munich. As part of this project Lindner carried out 1,860 m<sup>2</sup> of screed works and fitted hollow floor systems and raised floor systems in the entire six storey building.

## General

<b>Building Type</b>	Office Buildings, Industrial and commercial construction
<b>Company Division</b>	Lindner SE   Floors
<b>Completion</b>	2010 - 2009
<b>Client</b>	Münchener Rückversicherungs-Gesellschaft AG
<b>Architect</b>	meck architekten

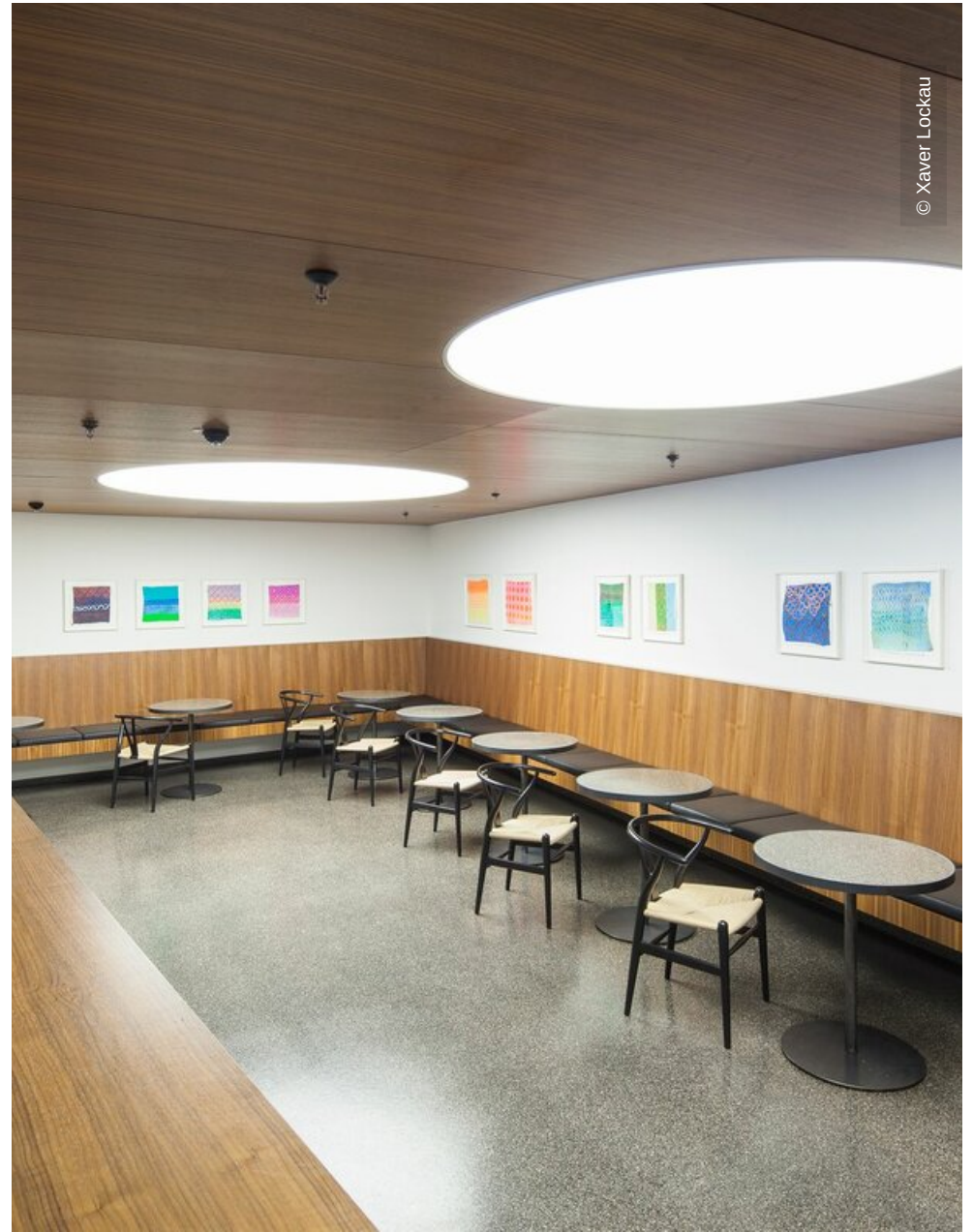
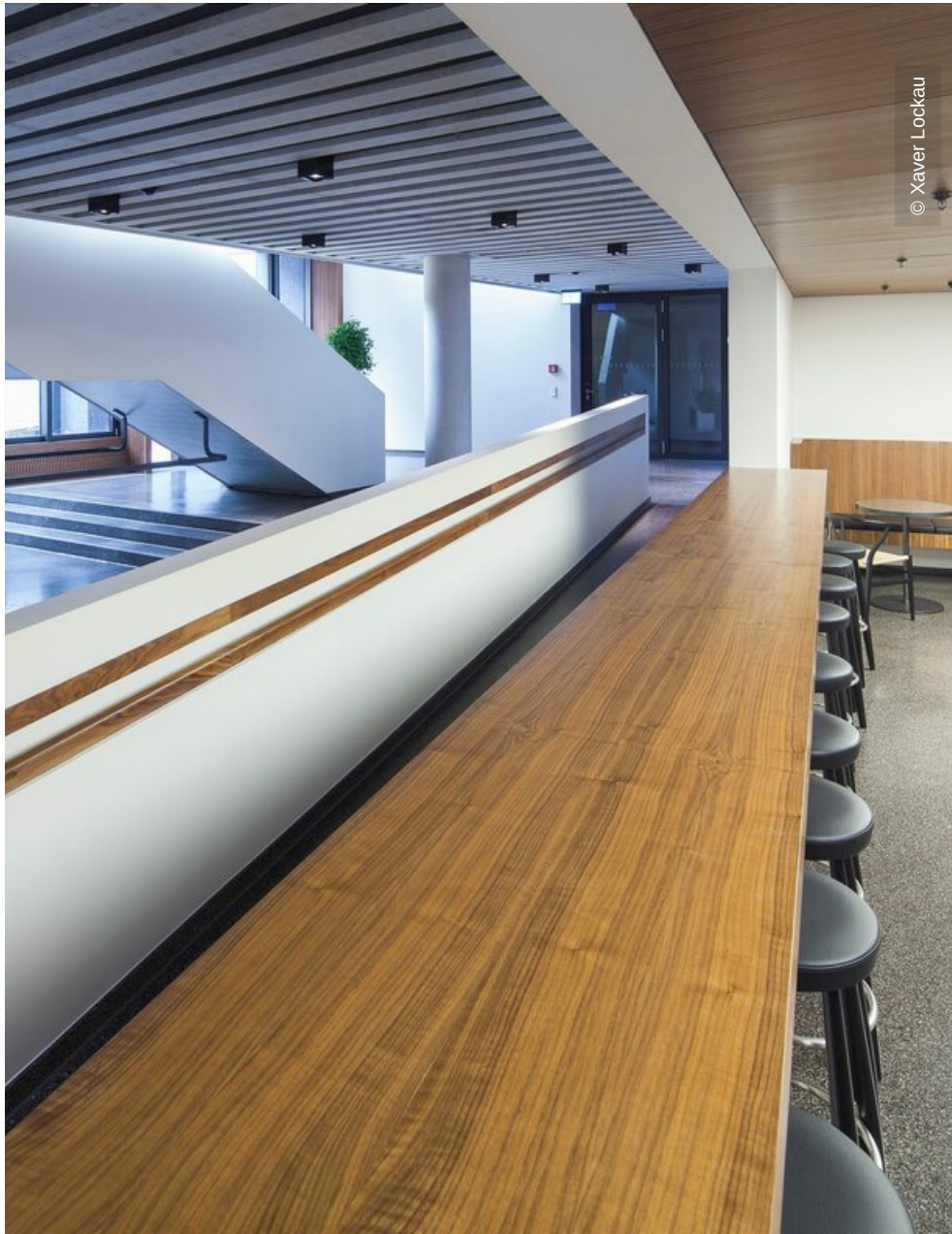
# Completed Works

- **Floors**

- Calcium Sulphate Panels

- FLOOR and more®

- NORTEC

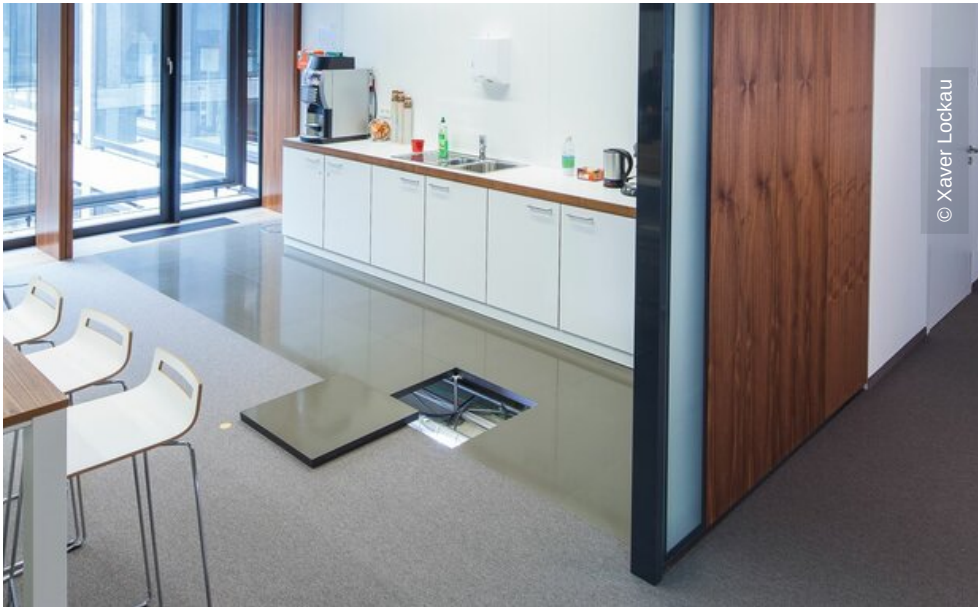




© Xaver Lockau



© Xaver Lockau



© Xaver Lockau



© Xaver Lockau



© Xaver Lockau



© Xaver Lockau