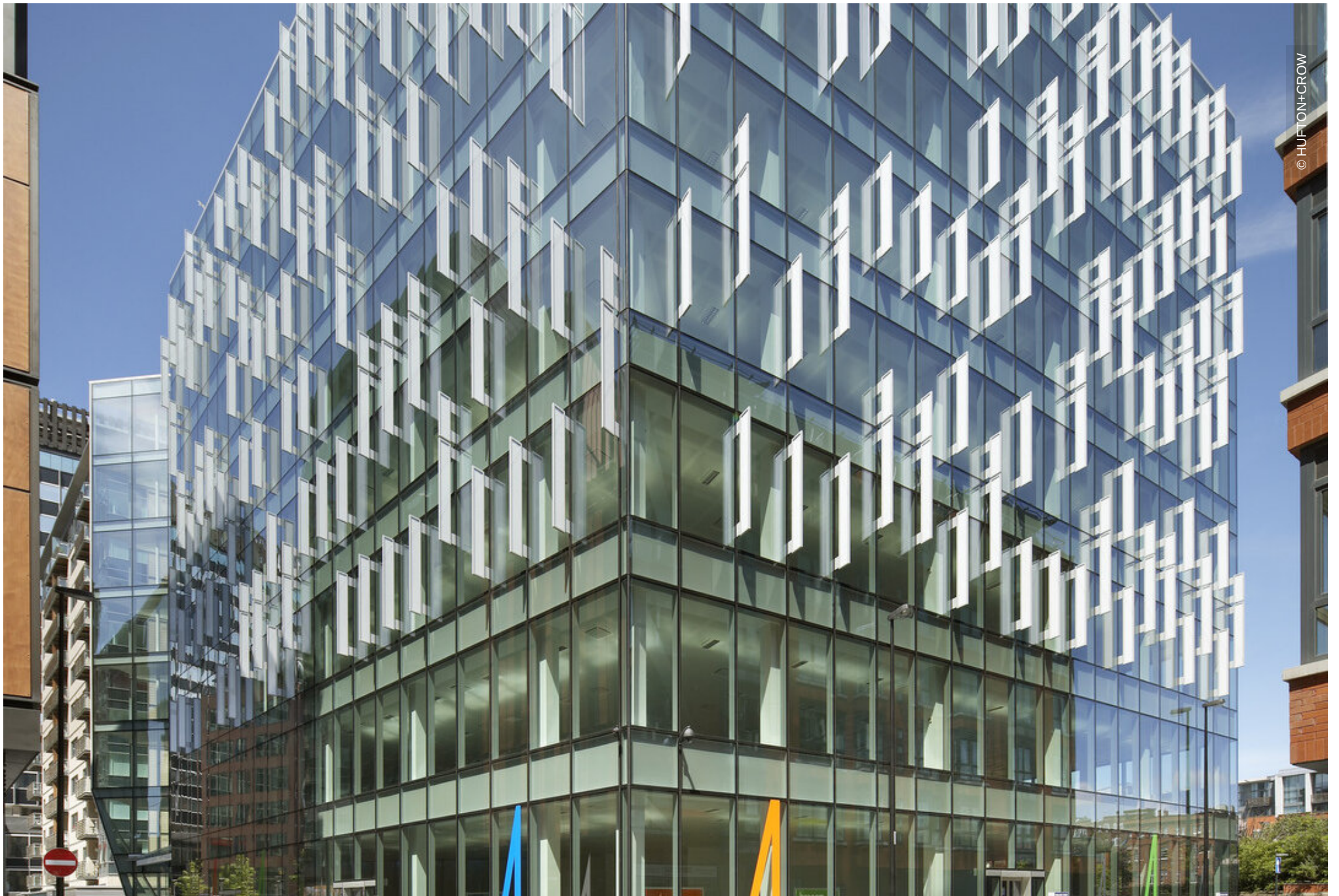


No 4 St Paul's Square

Liverpool, United Kingdom





© HUFTON+CROW

Project Description

No 4 St Pauls Square is a stunning 8 storey BREEAM "Excellent" awarded office building extending to an area of 109,000 square metres. It is the third and final phase of the development. Lindner assembled unitised facades, feature fins with Kapilux insulation, bolt fixed glazed entrance, motorised doors, copings, metal pands.

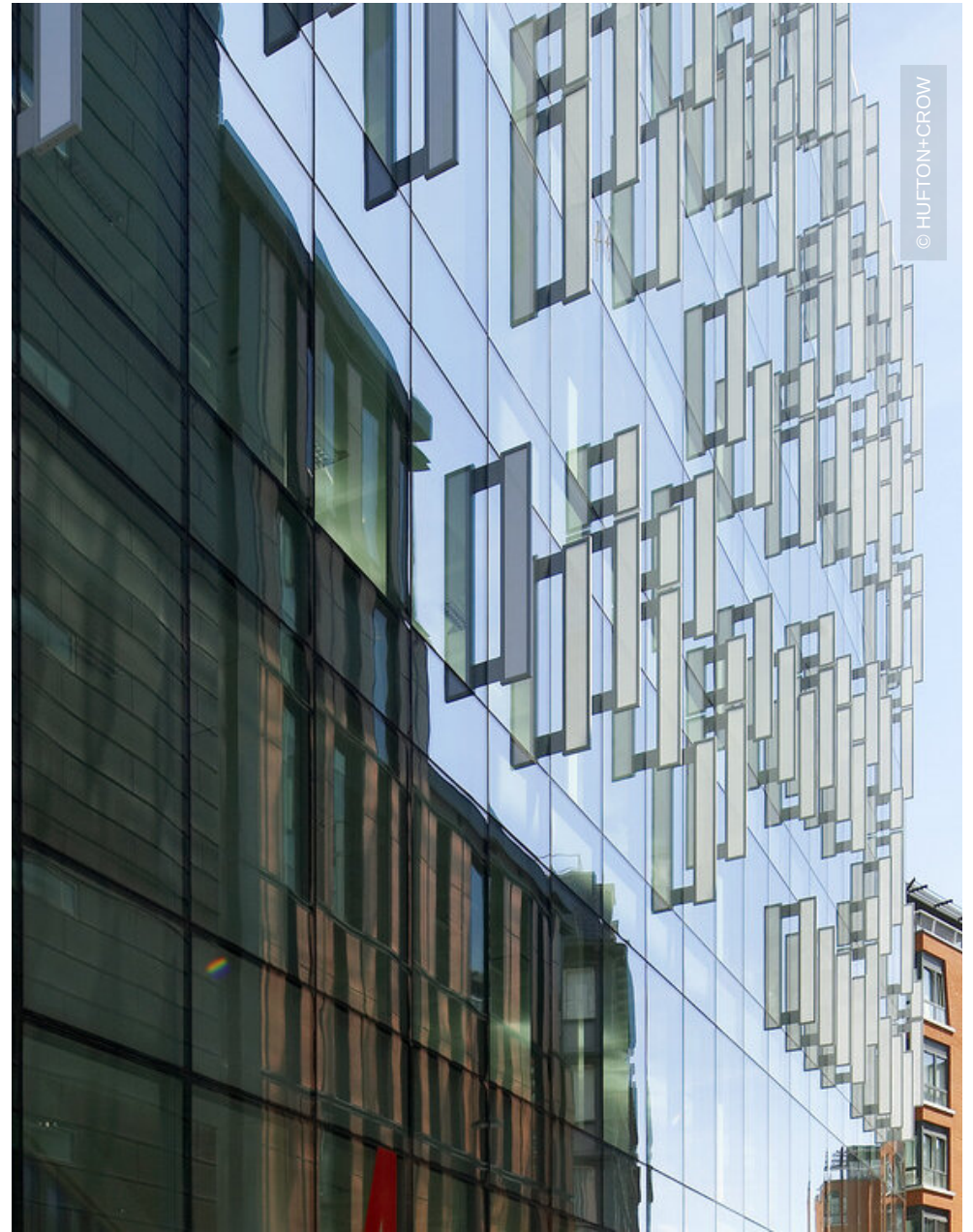
General

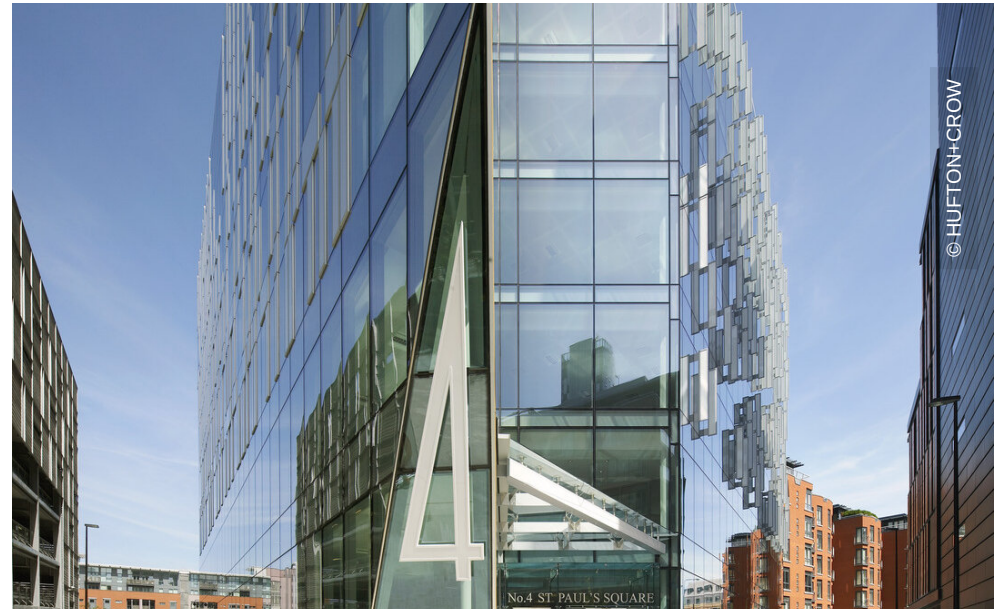
Building Type	Office buildings, Building certification
Company Division	Lindner Prater Ltd (DMCC BRANCH)
Completion	2010 - 2011
Client	Sheperd Construction Ltd
Architect	RHWL
Gebäudezertifizierung	BREEAM

breeam

Completed Works

- **Facades**







© HUFTON+CROW