

# Königstadt-Carree

Berlin, Germany





# Project Description

The Königstadt-Carree is situated close to the center of Berlin-Friedrichshain. The complex comprises four buildings: the 21 storey high office tower, a 9 storey high connecting building, an atrium and a hotel building. Lindner was responsible for the top quality interior fit-out for large areas of the 80 metres high office tower. The different floors were designed individually for each tenant as part of the tenant fit-out.

## General

<b>Building Type</b>	Office Buildings, Industrial and commercial construction
<b>Company Division</b>	Lindner SE   Fit-Out Central.East Germany, Lindner SE   Interior, Lindner SE   Partitions, Lindner SE   Floors
<b>Completion</b>	2017
<b>Architect</b>	bauart Architekten und Ingenieure
<b>Client</b>	bauart Group

# Completed Works

- **Floors**

- Calcium Sulphate Panels  
NORTEC  
FLOOR and more®

- **Partitions**

- Partition Systems Glass  
Partition Systems Full Panel  
Lindner Logic 100 Metal  
Additional Equipment- Lindner Plus

- **Ceilings**

- Canopy Ceilings  
Hook-On Ceilings

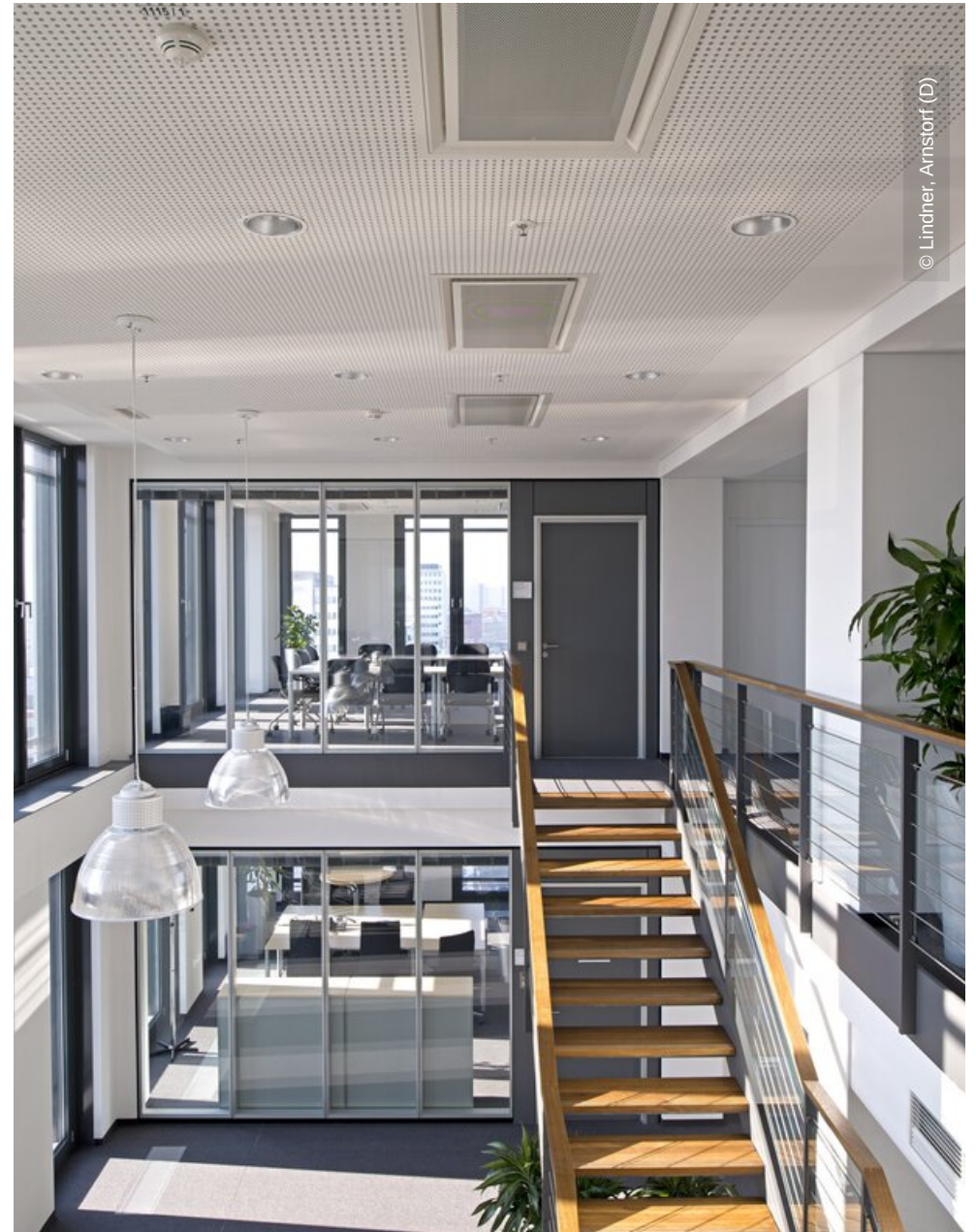
- **Doors**

- Wooden doors  
Sliding doors

- Floor covering works

- Floor coating works  
Screed works  
Tiling works  
Painting works  
Plastering works  
Stucco works  
Carpentry  
Dry construction works  
Plasterboard ceiling systems  
Plasterboard partition systems







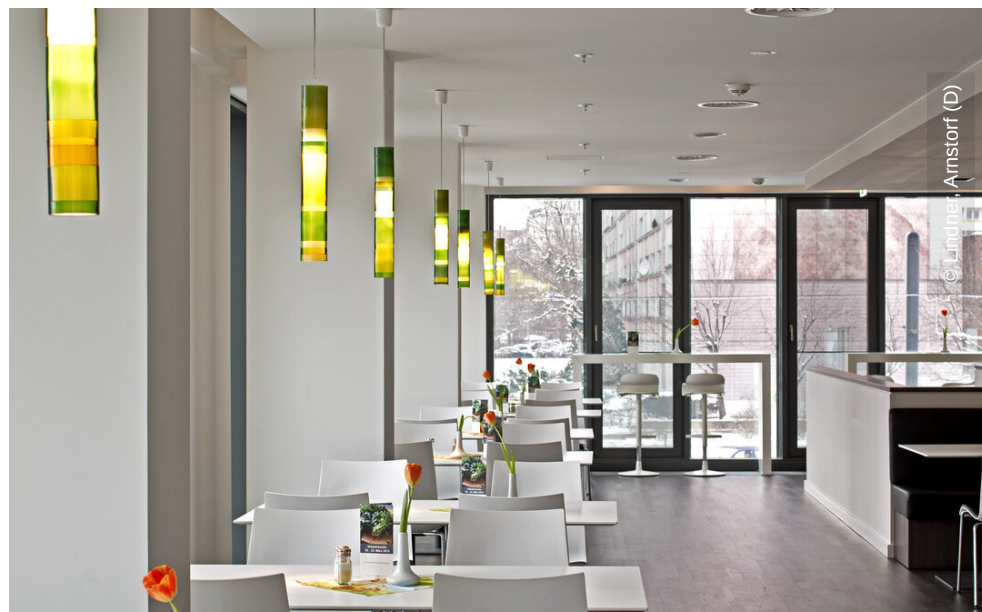




© Lindner, Arnstorf (D)



© Lindner, Arnstorf (D)



© Lindner, Arnstorf (D)



