

Manchester Metropolitan University

Manchester, United Kingdom





© Lindner, Arnstorf (D)

Project Description

The All Saints building is located at the heart of Manchester Metropolitan University's campus and operates as the university headquarters. Lindner installed 3,000 square metres of glazed partitions with 235 door elements. Full height screens were fitted to the lift shafts areas spanning 25m, full height screens to the main atrium and 11m wide 3m high passenger link bridges. The glass used in the 35m long Sandra Burslem Link Bridge is 55mm to meet fire rating requirements.

General

Building Type	Universities and Higher Education Buildings
Company Division	Lindner Interiors Ltd
Completion	2010 - 2012
Client	Sir Robert McAlpine
Architect	Feilden Clegg Bradley Studios LLP

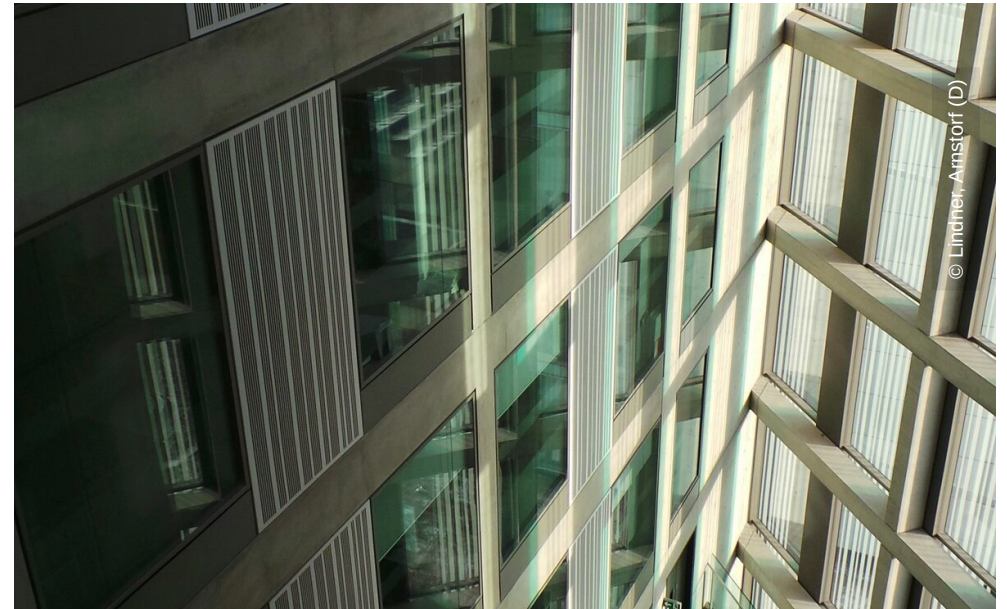
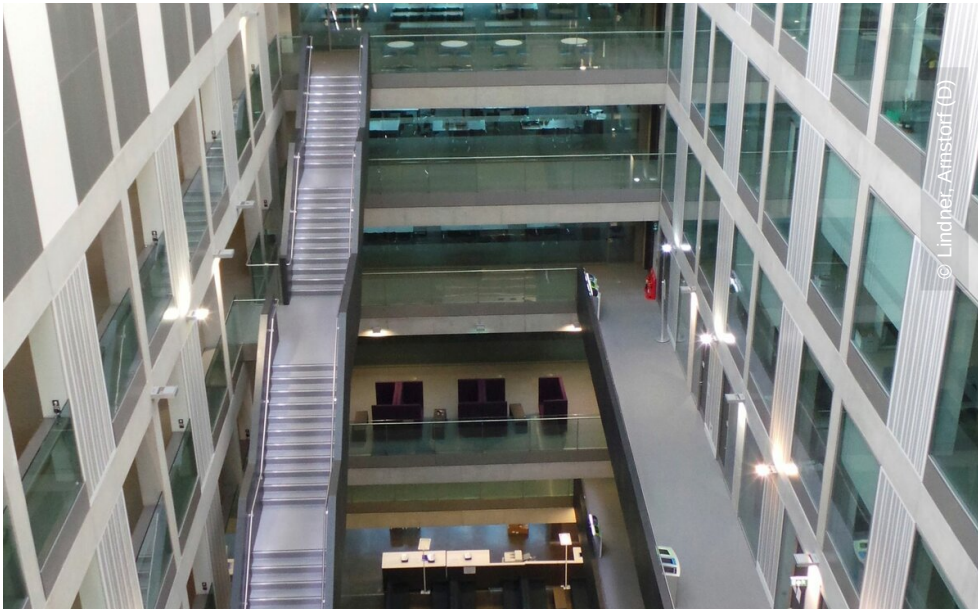
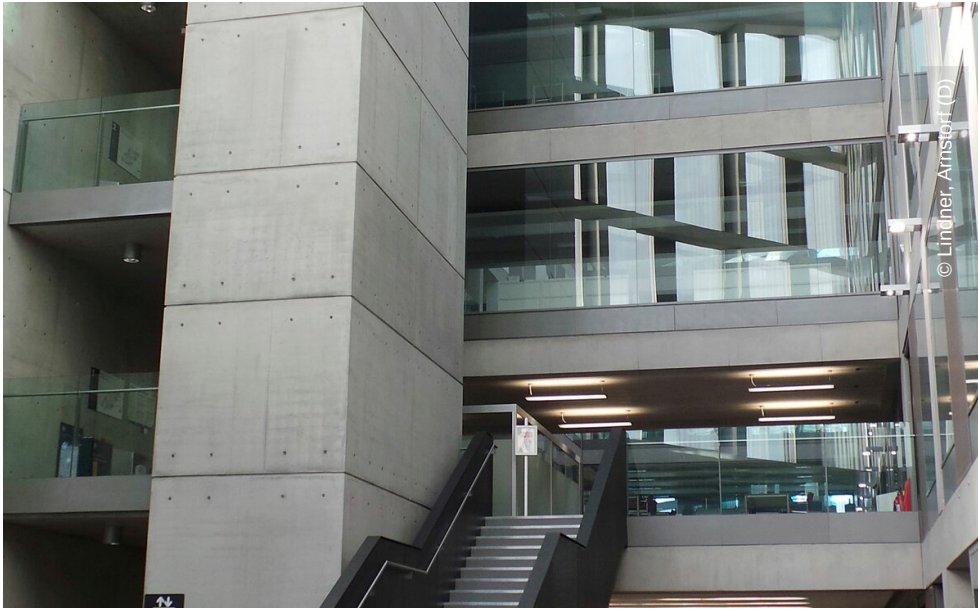
Completed Works

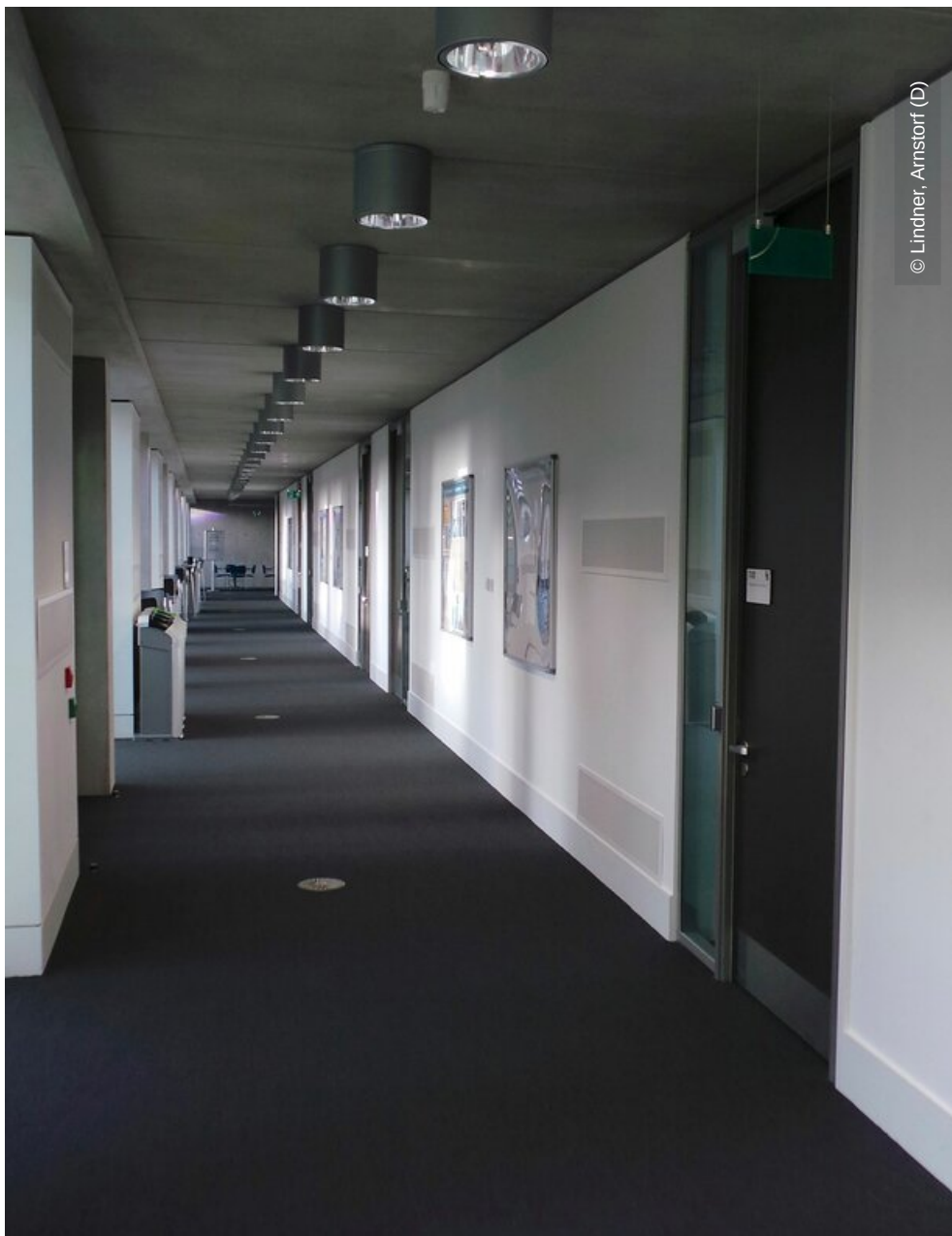
- **Partitions**

Partition Systems Glass

- **Doors**







© Lindner, Arnstorf (D)