

# Elbphilharmonie

Hamburg, Germany

 **Lindner**



# Project Description

The Elbphilharmonie is a new landmark in the cityscape of Hamburg. Its concert facilities feature 3 halls for 2,770 guests. In addition to the concert halls, the structure also houses an hotel with 244 rooms and numerous exclusive residential units. The Elbphilharmonie sets new standards in countless aspects of sophisticated architecture.

Lindner AG participated in the construction of the Elbphilharmonie by undertaking a demanding fit-out package for the foyers of the concert halls, including the stairwell construction from the plaza leading to the foyer. Furthermore, the scope of works included the fit-out of several lounges as well as office and backstage areas and sanitary facilities. The omnipresent demand for utmost quality shows in a large number of custom constructions that form a basis for the unique room construction. One example for this aspect are the foyer stairwells, executed in a rounded and arched form using a construction system that was developed and patented by Lindner. Another major contributor to the pleasant environment are Baswa Acoustic Ceilings that have been installed on large areas and partially fitted with cooling technology. Traditional crafting techniques also saw use in the Elbphilharmonie, one example being Stucco Encausto surfaces. Due to high levels of visitor traffic, fire protection plays a major role in the concept of the building. Without requiring cuts in appearance or acoustics, Lindner gypsum fibre boards allowed the implementation of veneered compound systems that met fire protection standards of up to class A2.

## General

<b>Building Type</b>	Residential, Concert Halls, Hotels and Resorts
<b>Company Division</b>	Lindner SE   Fit-Out North.Northwest Germany, Lindner SE   Floors
<b>Completion</b>	2012 - 2016
<b>Client</b>	Elbphilharmonie Bau KG

Architect

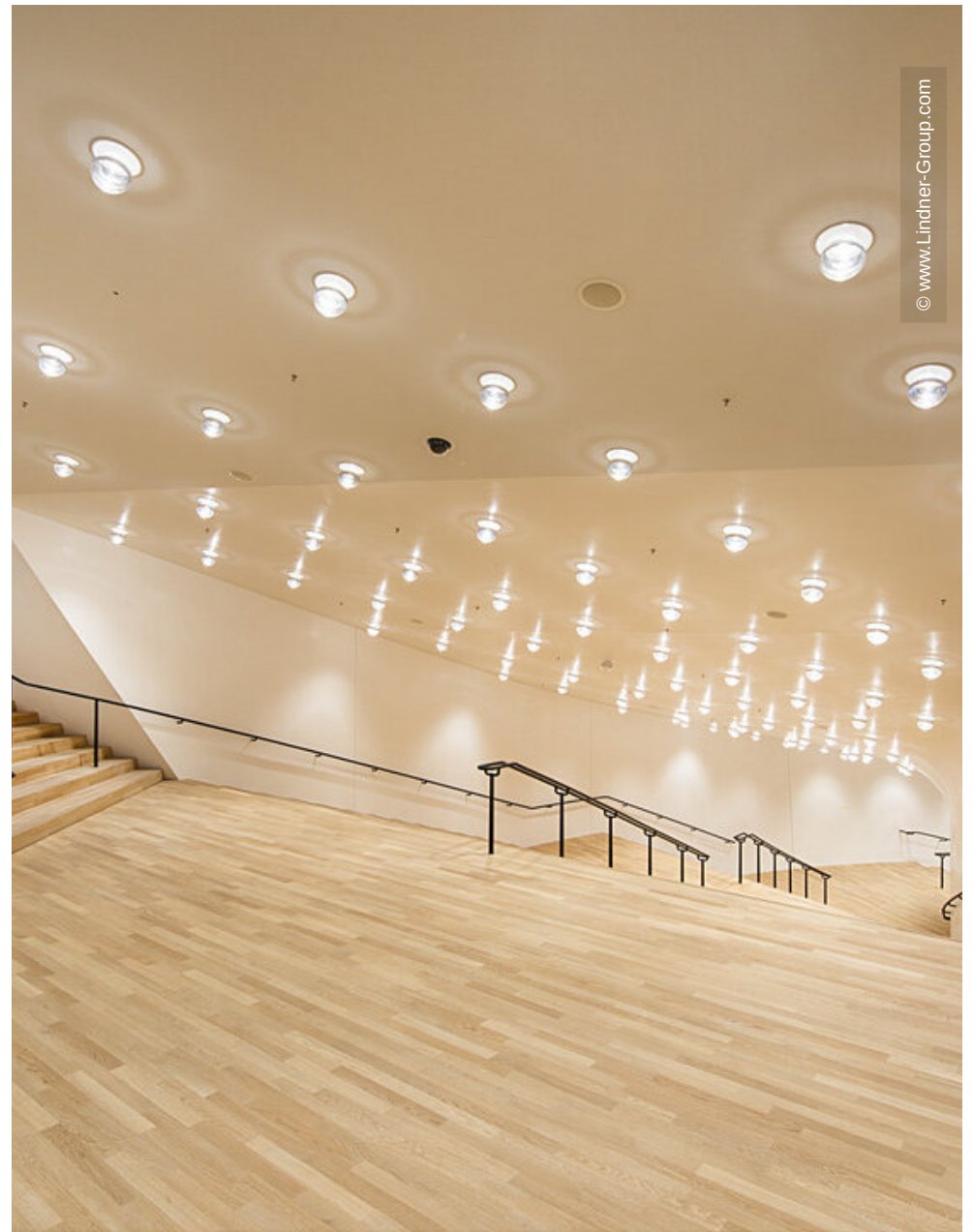
Herzog & de Meuron

## Completed Works

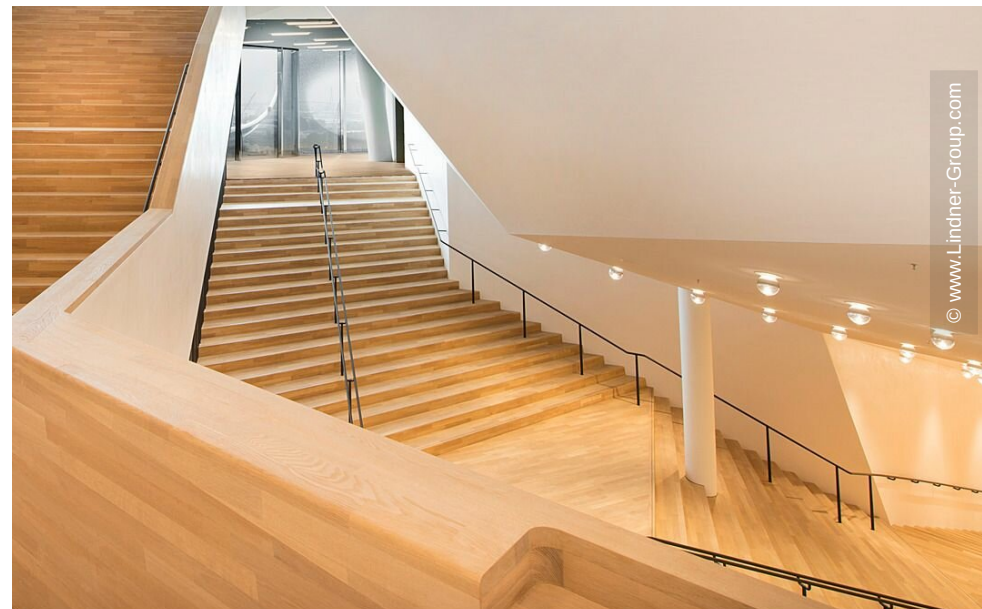
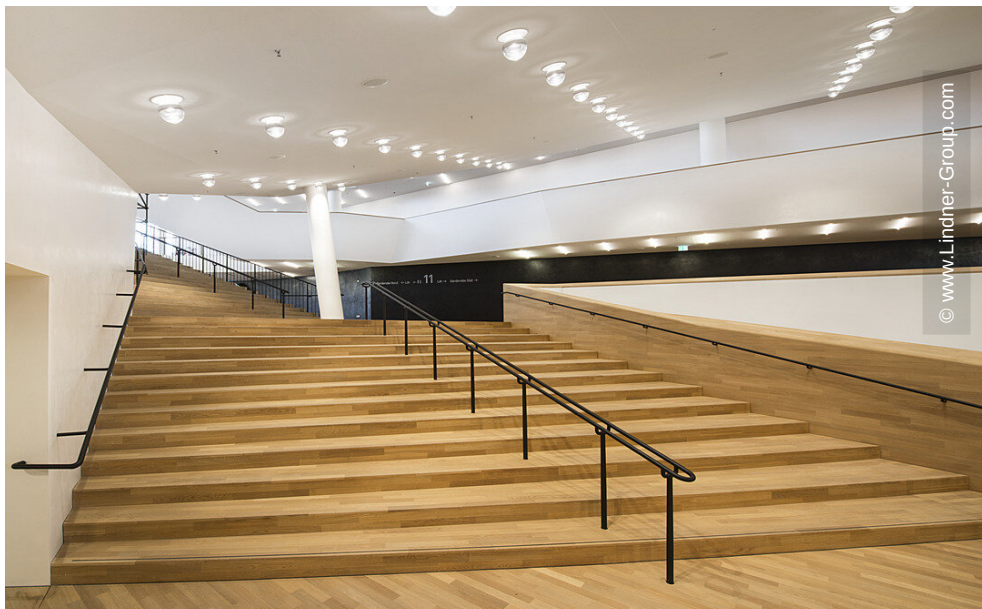
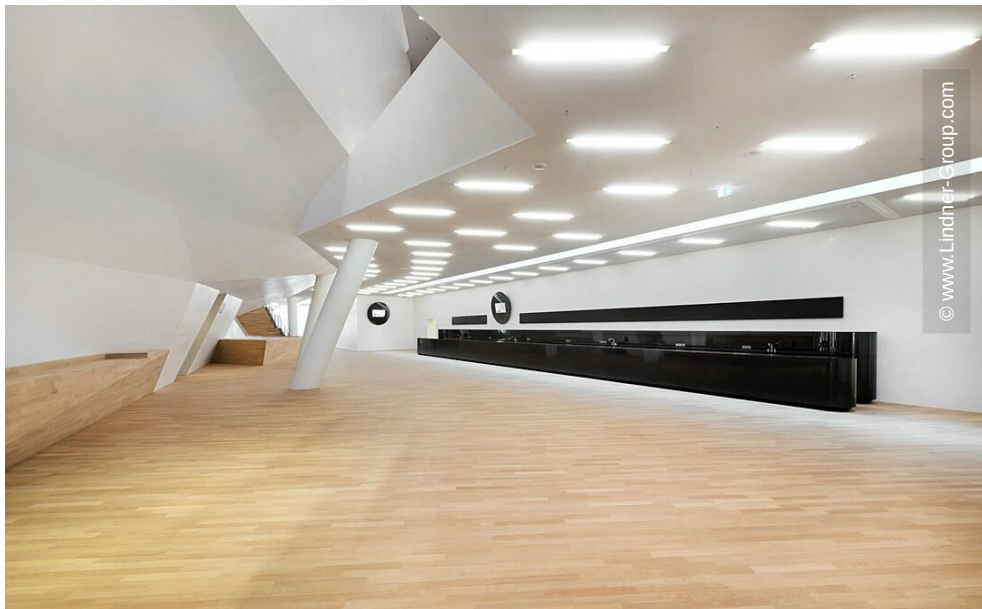
- **General contractor**
  - Floor covering works
  - Locksmith works
  - Painting works
  - Floor coating works
  - Natural and artificial stone works
  - Screed works
- **Dry lining**
  - Plasterboard partition systems
  - Plasterboard ceiling systems
- **Partitions**
  - Wall and ceiling panels
  - FIREwood
- **Ceilings**
  - Wall and ceiling panels
  - FIREwood

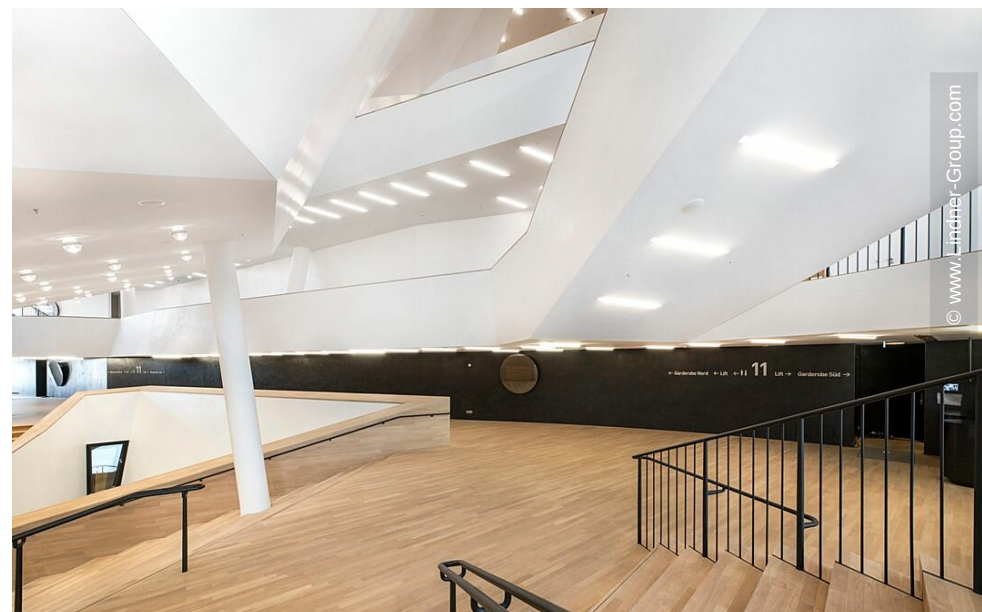
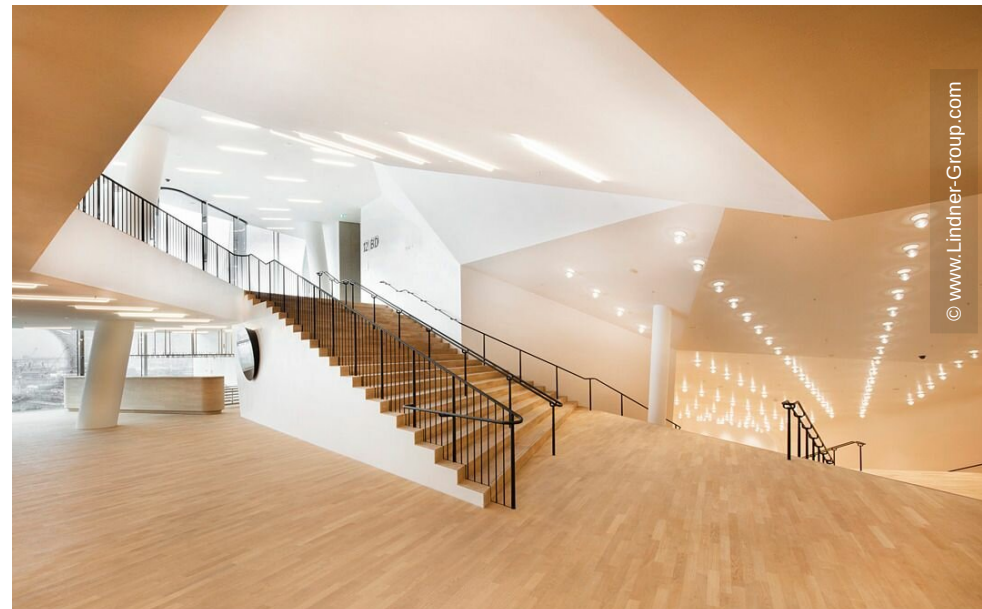


© www.Lindner-Group.com



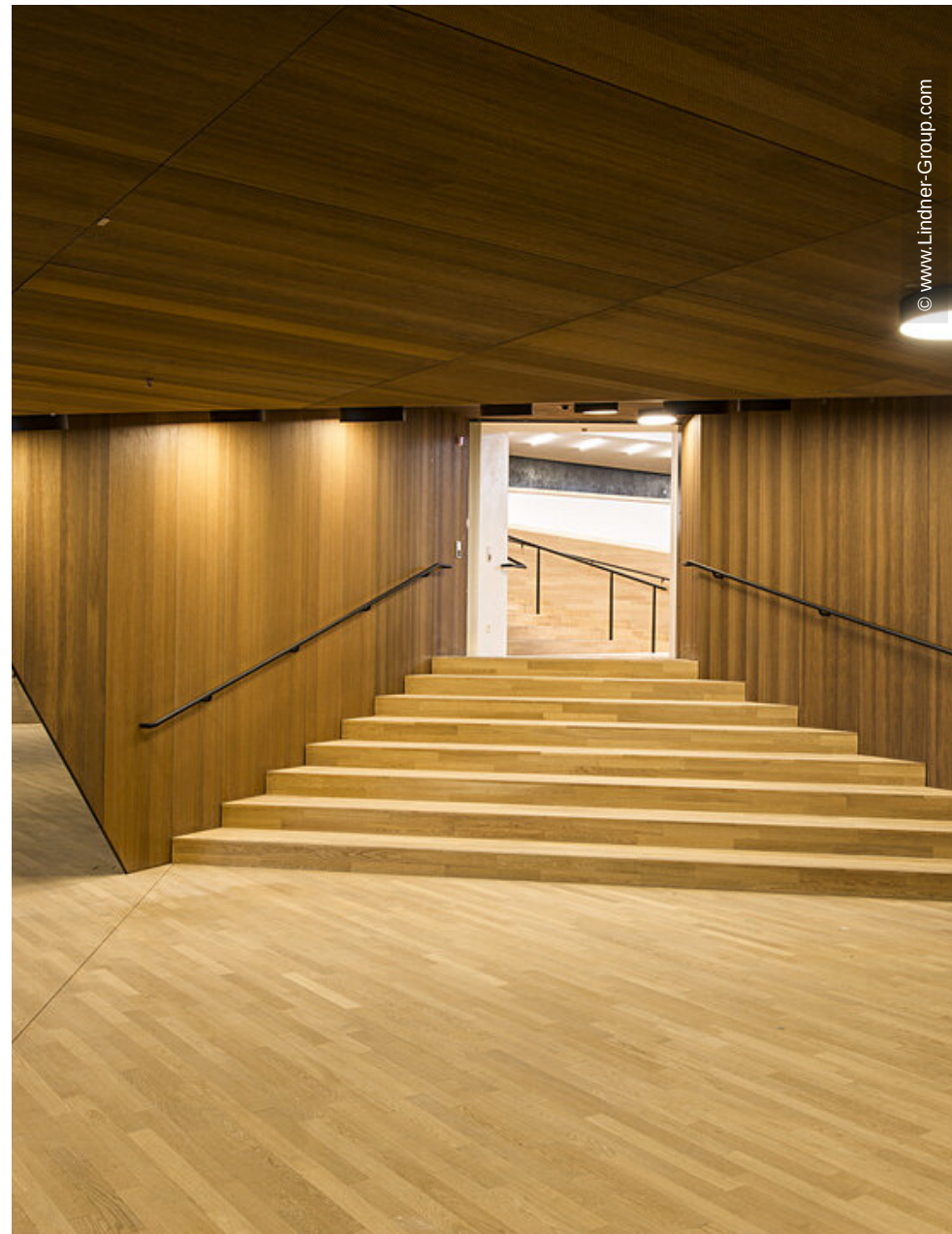
© www.Lindner-Group.com







© www.Lindner-Group.com



© www.Lindner-Group.com





