

Alsterhaus

Hamburg, Germany



Project Description

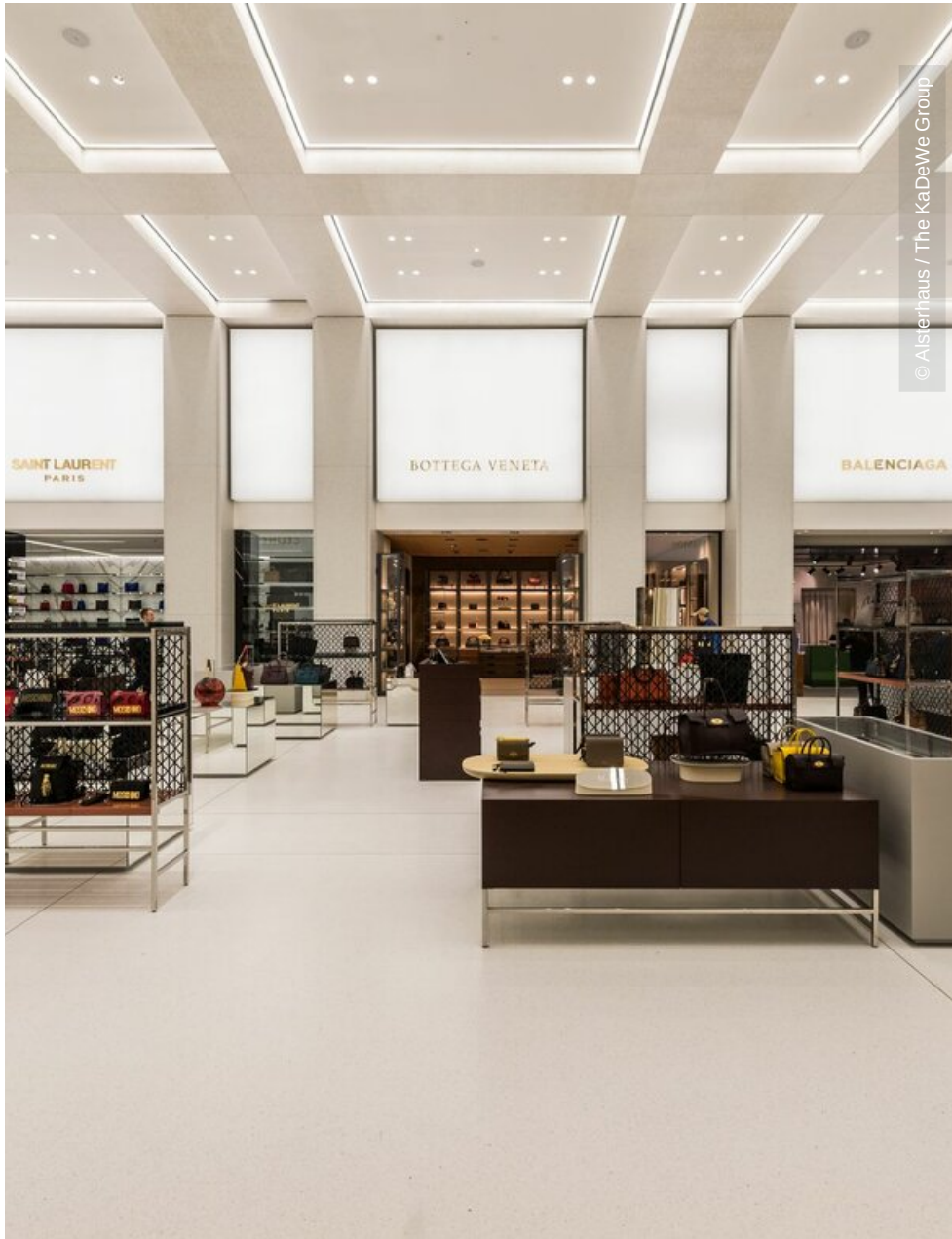
For over 100 years, the Alsterhaus has been a premium shopping centre at the Jungfernstieg of Hamburg. Through an investment of € 80 million, the proprietor KaDeWe Group has prepared the building's future as Hamburg's leading shopping location. This development immediately occurs to guests after stepping into the new entrée, the Accessoires Hall. It is situated in the area of the former atrium, which was completely redeveloped for this purpose. The former gallery on the first floor has been dismantled and architecturally melted with the ground floor. The area measures about 3,000 sqm and shows a luxurious, yet decent appearance. Ten shops with a focus on clothing and accessories have been set up in the Accessoires Hall. Lindner AG was responsible for large work packages in the course of the Accessoires Hall's modernisation. It began with deconstruction works, which carefully reduced the former fit-out to create a basis for the redevelopment. What followed was the fit-out according to the new design concept, featuring materials that satisfy the bespoke nature of this area.

General

Building Type	Shopping Centres, Industrial and commercial construction
Company Division	Lindner SE Fit-Out North.Northwest Germany
Completion	2016 - 2014
Client	THE KADEWE GROUP
Architect	Kleihues+Kleihues Ges. von Architekten

Completed Works

- Demolition works
Painting works
Natural and artificial stone works
- **Dry lining**
Plasterboard ceiling systems
Plasterboard partition systems



© Alsterhaus / The KaDeWe Group



© Alsterhaus / The KaDeWe Group

