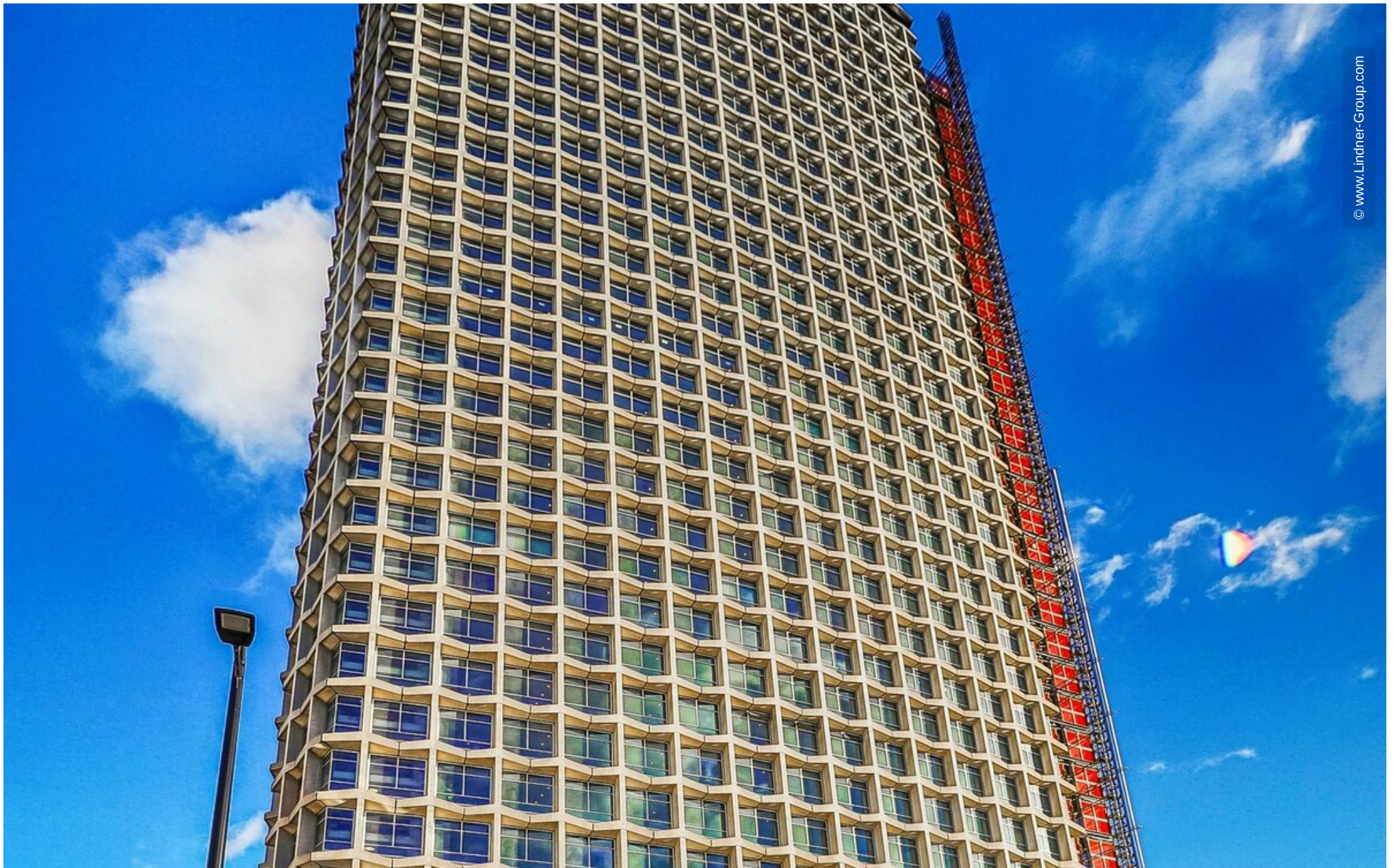


Centre Point

London, United Kingdom





© www.Lindner-Group.com

Project Description

When Centre Point was erected in 1966, it was one of London's first true skyscrapers with a height of 117 m. The building's brutalist architecture is still modern after 50 years. For this reason, Centre Point's most recent redevelopment brought no visible changes on the exterior, while functionality was improved in a great way. The interior, on the other hand, was converted from office spaces to upmarket apartments. The 34-storey tower now features 82 apartments.

Lindner Facades was contracted with the redevelopment of Centre Point's window units. This brought improvements in regard of sound and thermal insulation. The scope of works also included sliding doors and balustrade works for the penthouse.

General

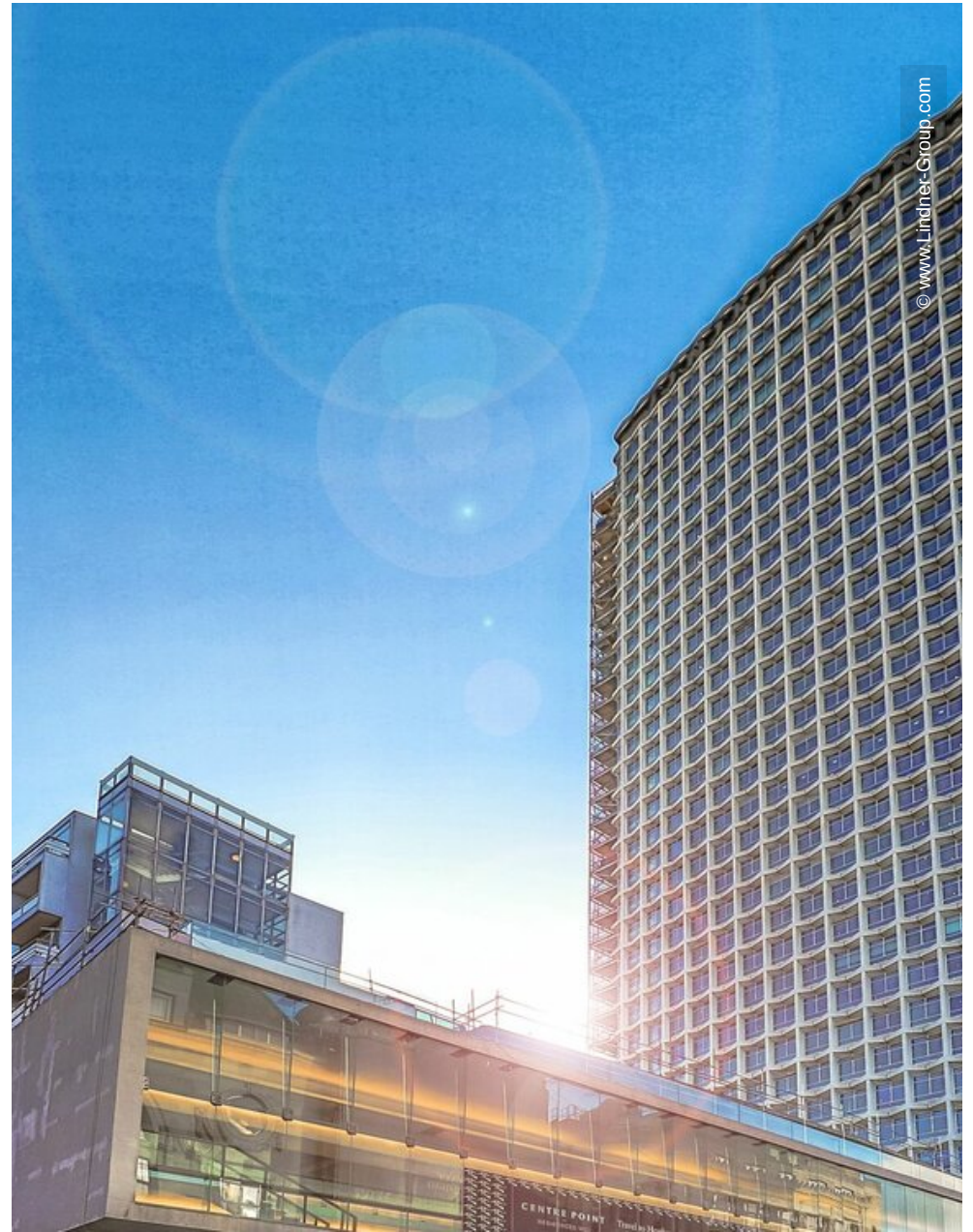
Building Type	Residential
Company Division	Lindner Fassaden GmbH,
Completion	2016
Client	Almacantar
Architect	Conran+Partners

Completed Works

- **Facades**



© www.Lindner-Group.com



© www.Lindner-Group.com