

F. Hoffmann-La Roche AG Buildings 254-256

Kaiseraugst, Switzerland





Foto: Beat Ernst © Roche Ltd.

Project Description

The pharma company F. Hoffmann-La Roche AG invested about 290 million Swiss Francs in the establishment of administration buildings for IT staff at the site in Kaiseraugst near Basel. This construction project is part of an ongoing site consolidation, which is set to create a new competence centre for the IT and HR of the company. The complex consists of four buildings, which are built in two sequences. The buildings 254/255/256 have been built in Sequence 1 until late 2017, while Sequence 2 with its buildings 257 are going to be finished in 2018. In total, space for a staff of 1,500 is being created, which considers the current number of employees as well as future growth perspectives. The aspects of sustainability and energy efficiency play a major role in the company's construction projects, the Home for IT follows this guideline.

The local branch Opfikon of Lindner AG was contracted as a part of Sequence 1 with the production and installation of heated and chilled ceilings of type Plafotherm® S as well as the delivery of hollow and raised floors by Lindner. The custom ceiling system was installed in all office and conference areas of the building, as well as in the central atrium. A variety of the TOUCHdesign surface treatment technology makes for a striking appearance, while a toolless swing-down mechanism of type TIPmotion® and rear-mounted heating and cooling technology comply with the functional requirements of the project. The choice for this method of area temperature control is in compliance with the sustainable building concept of the Home for IT. Regarding flooring systems, the choice was made in favour of NORTEC and FLOOR and more®, which have been executed with prefabricated carpet covering or parquet covering, respectively. Lindner is also contracted with construction works in Sequence 2.

General

Building Type	Office Buildings, Utility Rooms, Industrial and commercial construction
Company Division	Lindner SE Branch Opfikon
Completion	2015 - 2017
Client	F. Hoffmann-La Roche AG
Architect	Nissen & Wentzlaff Architekten

Completed Works

- **Ceilings**
 - Project-Related Solutions
 - Heated and Chilled Hook-On Ceilings
- **Floors**
 - Calcium Sulphate Panels
 - NORTEC
 - FLOOR and more®

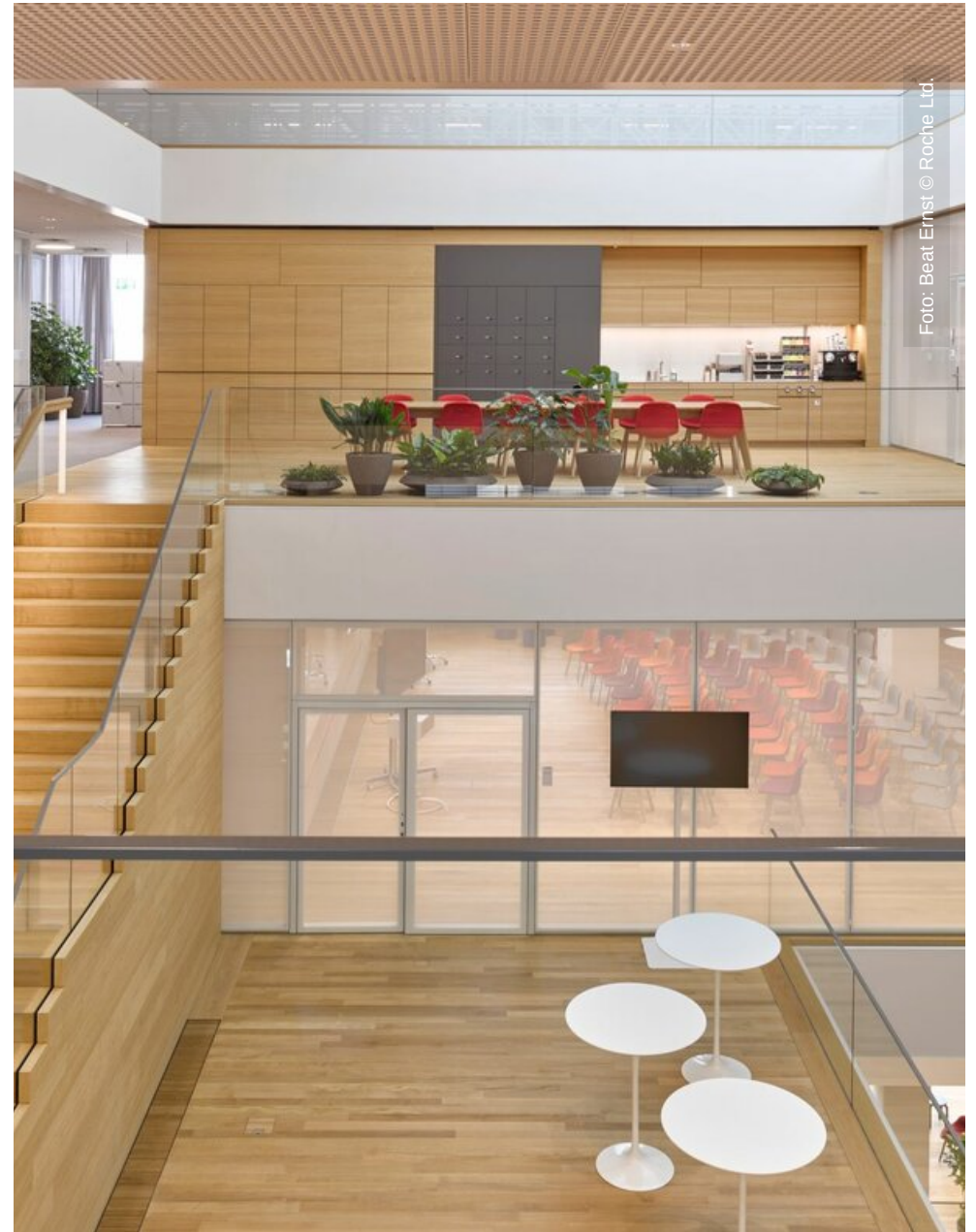
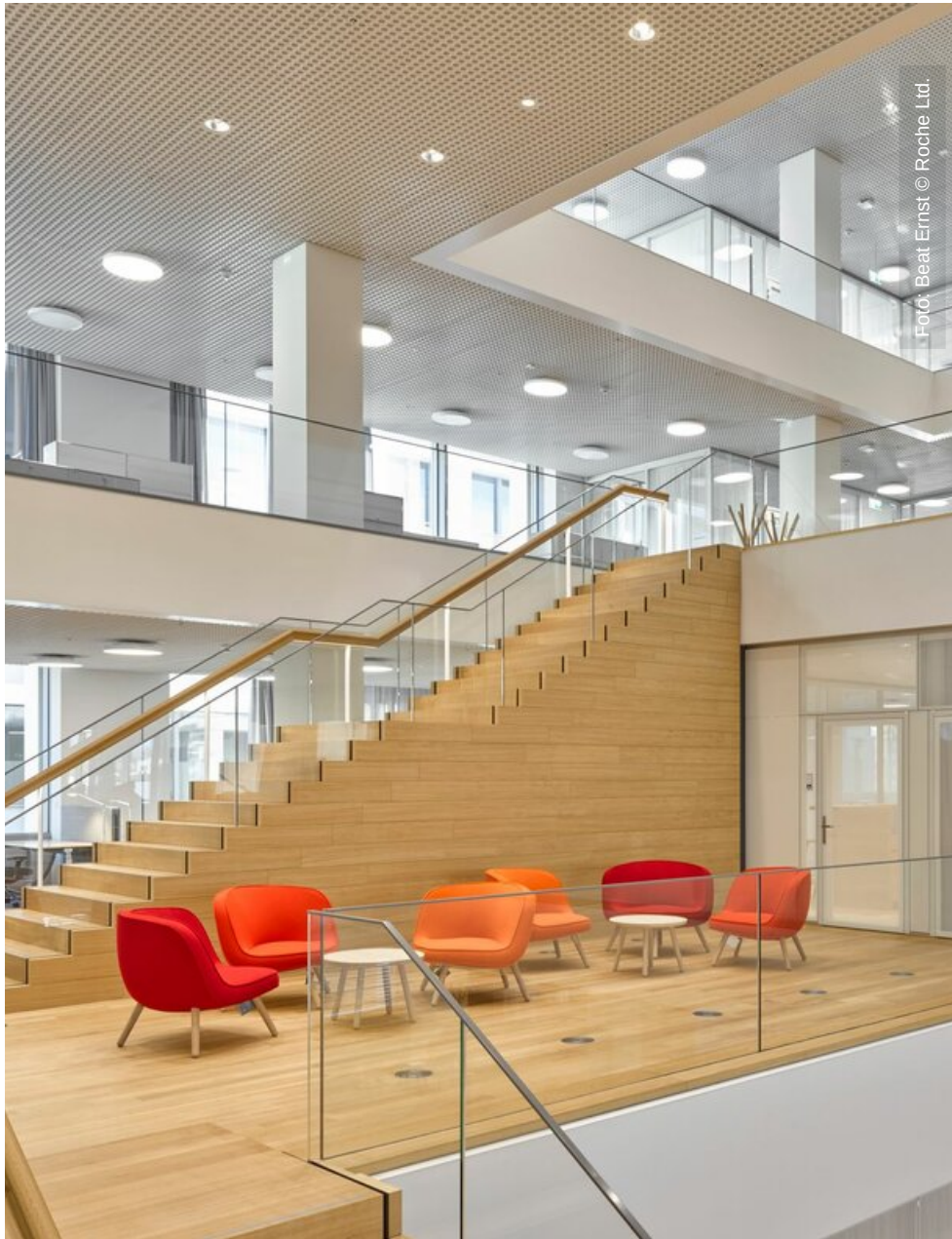




Foto: Beat Ernst © Roche Ltd.



Foto: Beat Ernst © Roche Ltd.



Foto: Beat Ernst © Roche Ltd.



Foto: Beat Ernst © Roche Ltd.

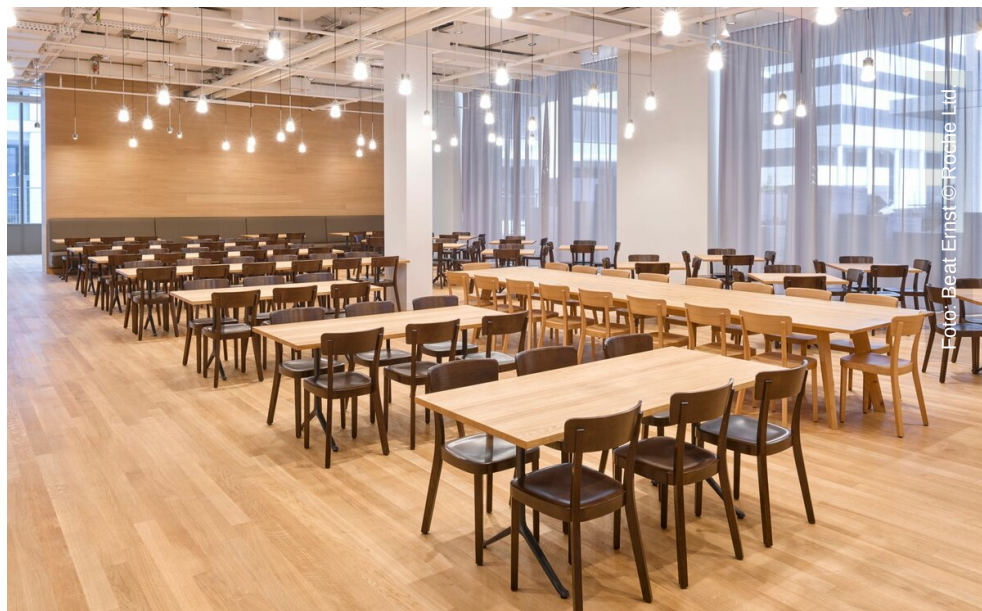




Foto: Beat Ernst © Roche Ltd.



Foto: Beat Ernst © Roche Ltd.

