

NOVE by Citterio

Munich, Germany

 **Lindner**



Project Description

The former freight depot near Munich's main railway station has been the subject of a major urban development project in recent years, the Arnulfpark. The vacant lots quickly closed, until in 2016 with the new building NOVE the last of them disappeared. The building provides office space on a usable area of 27,500 m² in the modern environment of trade, living and culture of Arnulfpark. At the same time, the architecture created by Antonio Citterio visibly stands out from its surroundings when viewed from outside: golden aluminum frames decorate the windows and lend the building a striking, three-dimensional structure. The inside features warmer materials such as wood and natural stone. The ensemble is structured around six central floors around a central 23-metre-high atrium and a 9-storey high-rise building. For its sustainable building concept, NOVE was awarded the LEED Platinum certification.

Lindner Objektdesign was commissioned to carry out carpentry work as a specialist for interior fit-out and furnishings. This includes wooden wall claddings, wooden baffle ceilings and a large number of doors with different requirement profiles. Through the use of wood from certified sources and the use of environmentally friendly production methods, Lindner contributed to the overall certification of the NOVE.



Completed Works

- **Partitions**
Wall and ceiling panels
- **Ceilings**
Wall and ceiling panels
- **Doors**
Wooden doors
- **Carpentry**

General

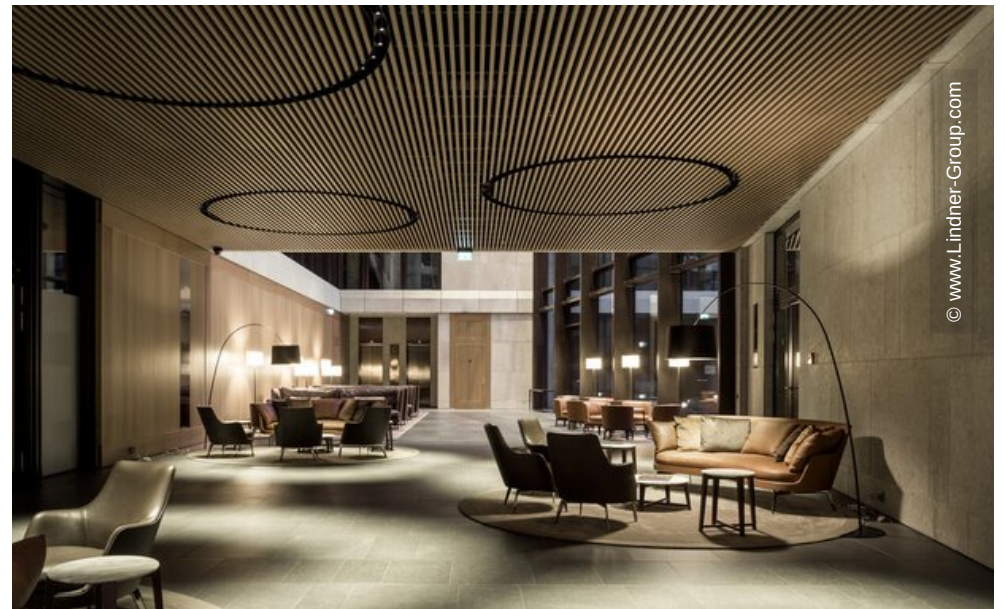
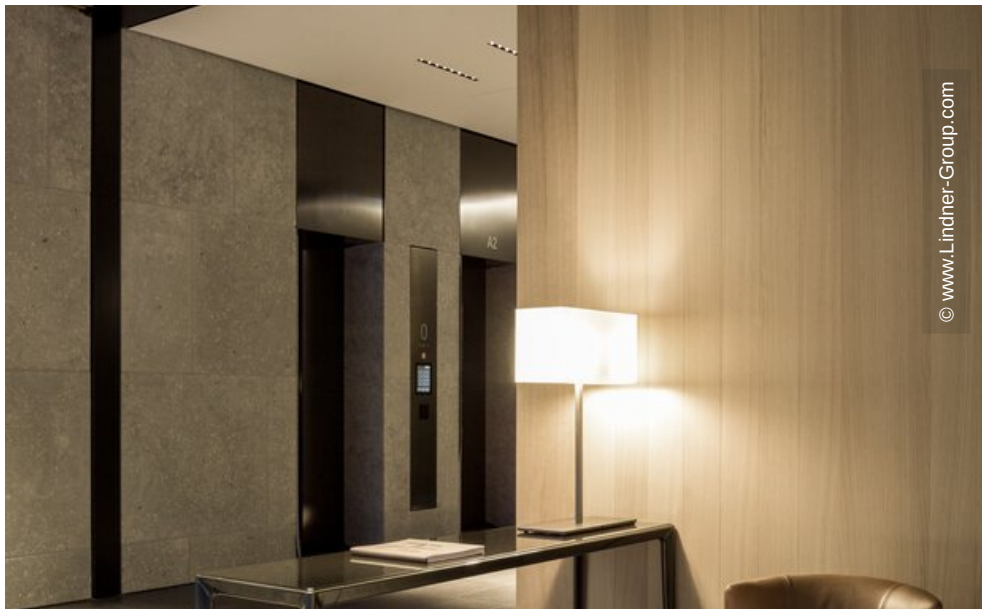
Building Type	Office Buildings, Building certification, Industrial and commercial construction, Others
Company Division	Lindner SE Interior
Completion	2016
Client	Horus Development GmbH
Architect	Antonio Citterio and Partners Srl
Building Certification	LEED

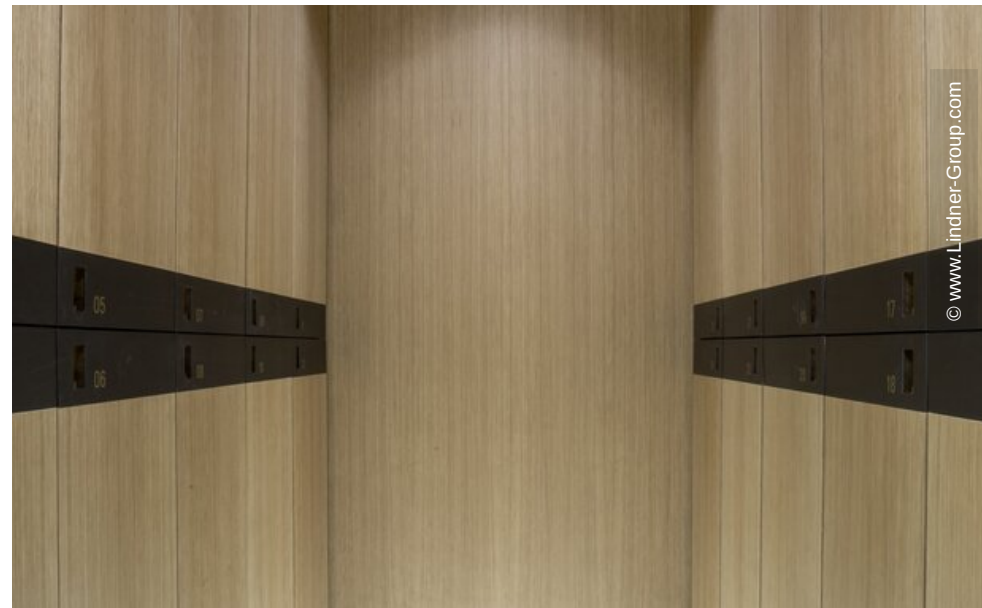
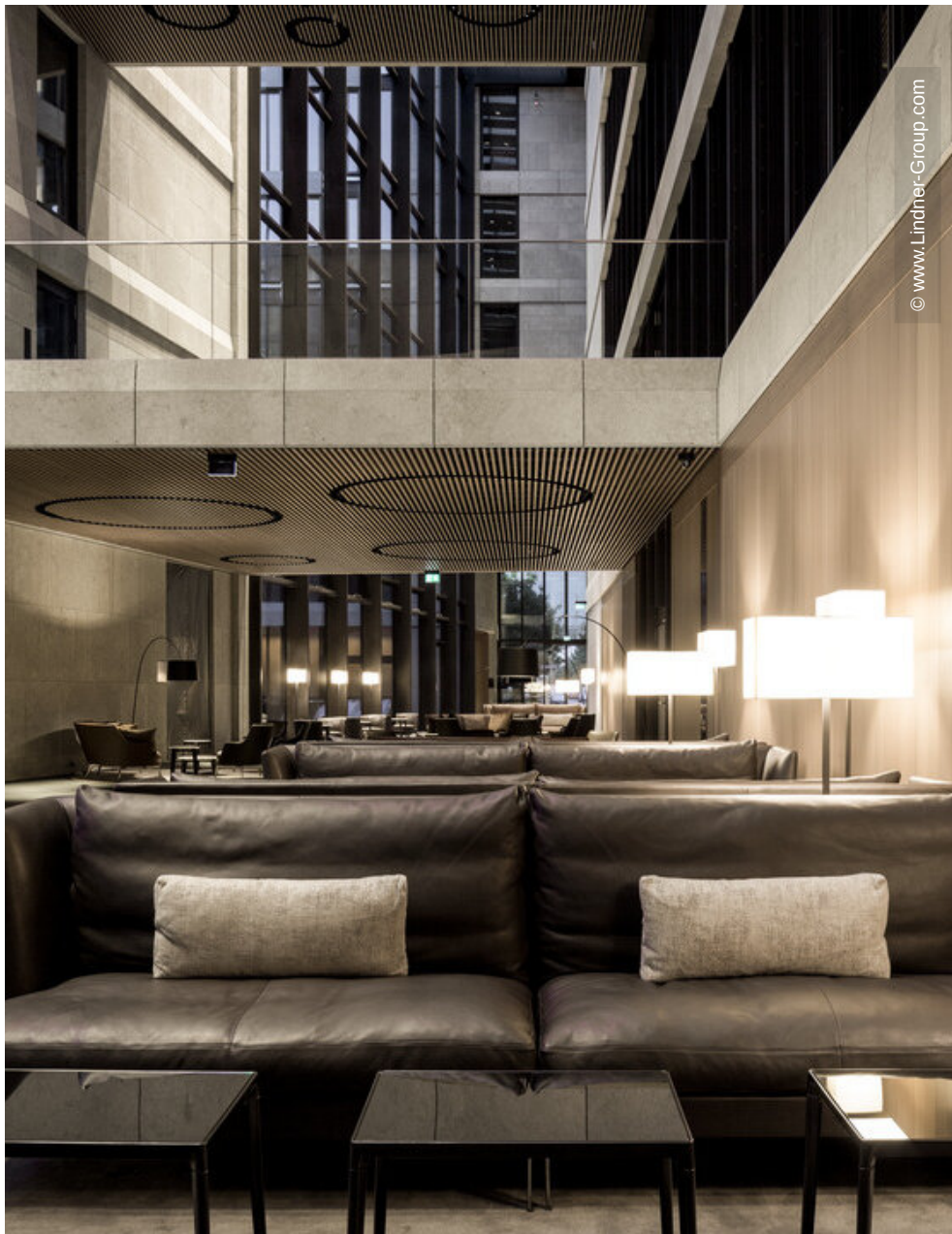


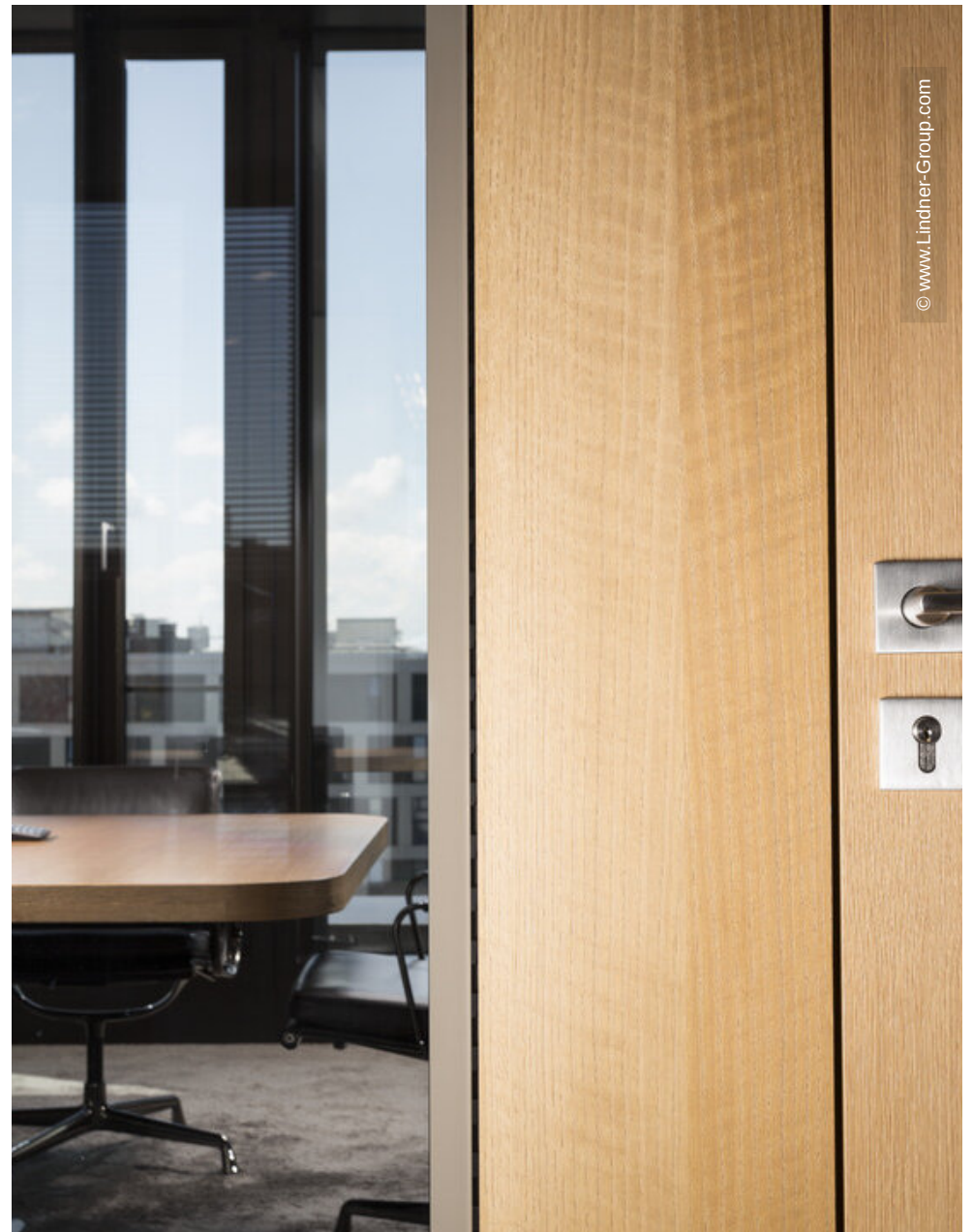
© www.Lindner-Group.com



© www.Lindner-Group.com







STORAGE



© www.Lindner-Group.com