

MHK Europazentrale

Dreieich, Germany





Project Description

As one of the major European purchasing and service groups, the MHK Group is primarily active in the kitchen, furniture and sanitary retail sector. In Dreieich near Frankfurt, the company created a new European headquarters in a 6-hectare park landscape. This includes an architecturally highly sophisticated main building with office space for 420 employees and conference rooms as well as an educational forum that can be used for the training and further education of kitchen consultants as well as for events such as congresses, meetings, concerts or banquets.

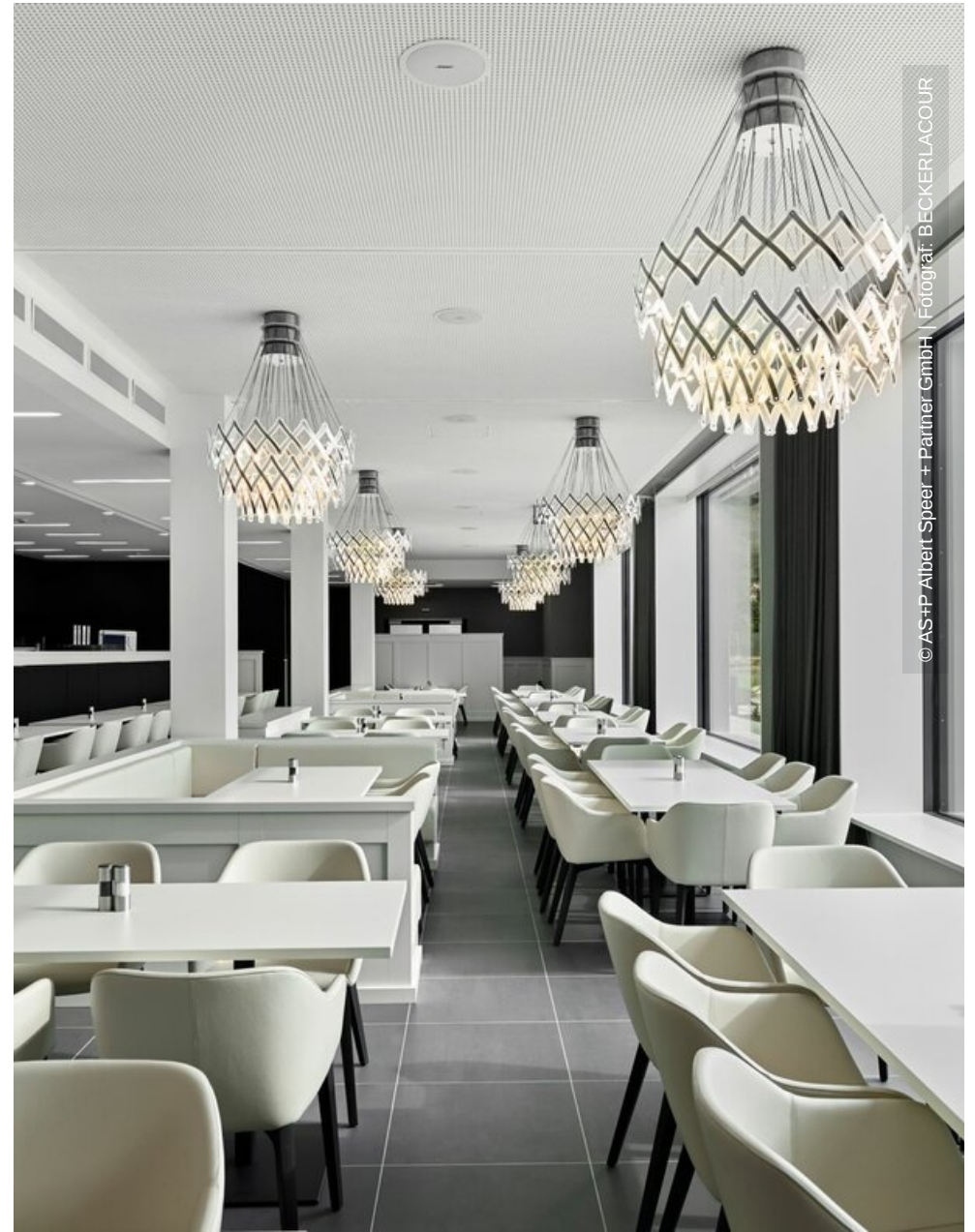
Lindner SE has contributed to the construction of the main building of the MHK Group with partition systems, wall claddings and carpentry work. The partition walls consist of Lindner Logic 100 metal walls and Lindner Life Stereo 125 glass partition walls as well as aluminum tubular frame doors. This combination achieves spatial separation, high-quality optics and pleasantly high levels of transparency in the traffic areas of the building. For cases in which more confidentiality is desired, blinds were integrated into the glass partitions, which can be shut down if necessary and automatically open in case of fire thanks to networking with the fire alarm system. For optimum acoustics in the premises, acoustically effective wall claddings with fabric cover were installed by Lindner at many points in the office space. In addition, various special furniture was created as a carpenter's work, including benches with upholstery, sofas, built-in shelves and under-ward wardrobes and frame borders for windows. Likewise, anti-glare roller blinds and curtains as well as door elements with various requirements were included in the scope of services.

General

Building Type	Office buildings, Industrial and commercial construction
Company Division	Lindner SE Partitions, Lindner SE Interior
Completion	2018
Architect	Albert Speer & Partner GmbH
Client	MHK Group AG

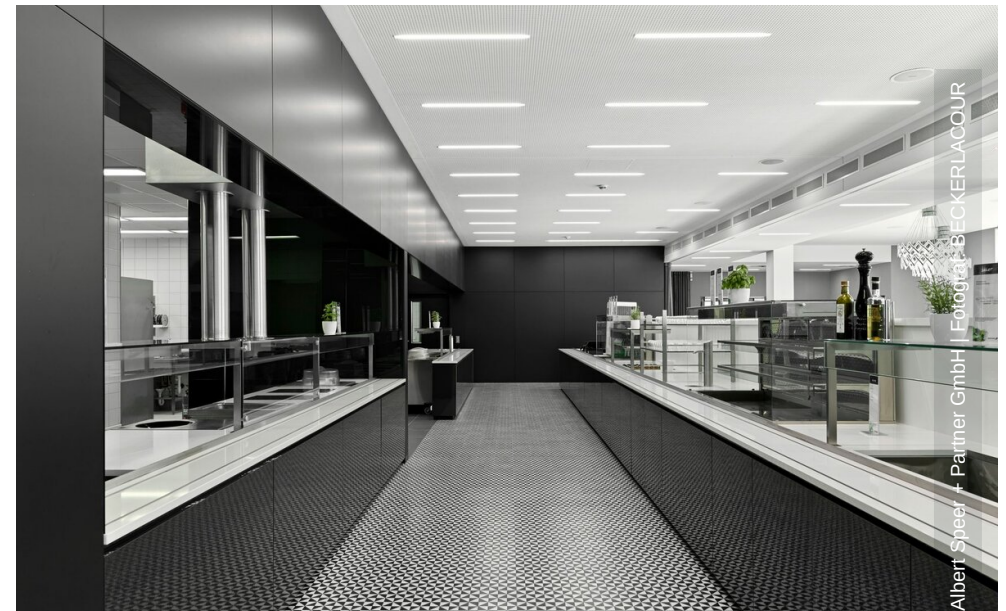
Completed Works

- Partitions
 - Wall and ceiling panels1650 sqm
 - Partition Systems Glass600 Pcs.
 - Doors for Partition Systems120 Pcs.
 - Additional Equipment- Lindner Plus120 Pcs.
- Doors
- Other services
 - Furniture
 - Carpentry

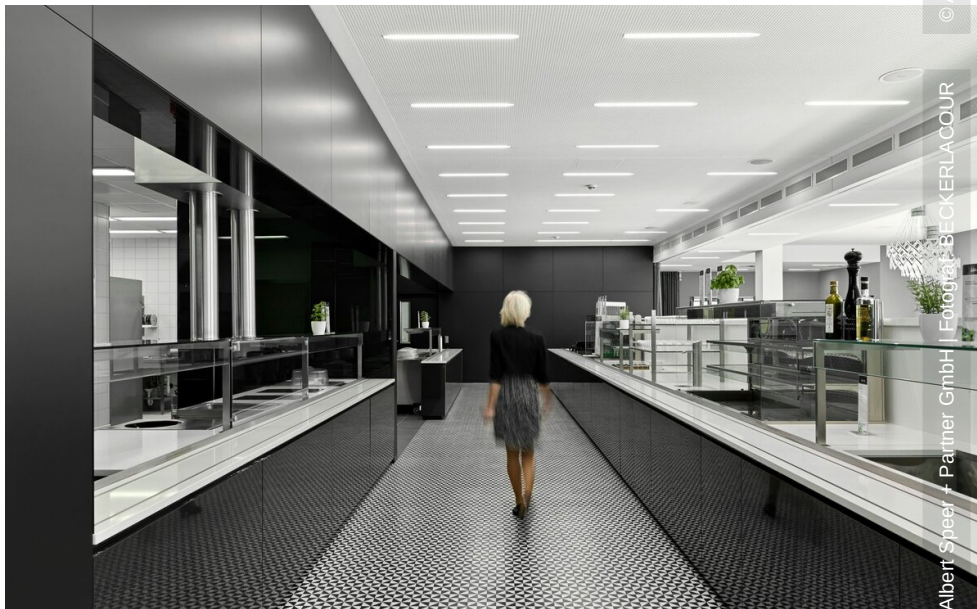




© AS+P Albert Speer + Partner GmbH | Fotograf: BECKERLACOUR



© AS+P Albert Speer + Partner GmbH | Fotograf: BECKERLACOUR



© AS+P Albert Speer + Partner GmbH | Fotograf: BECKERLACOUR

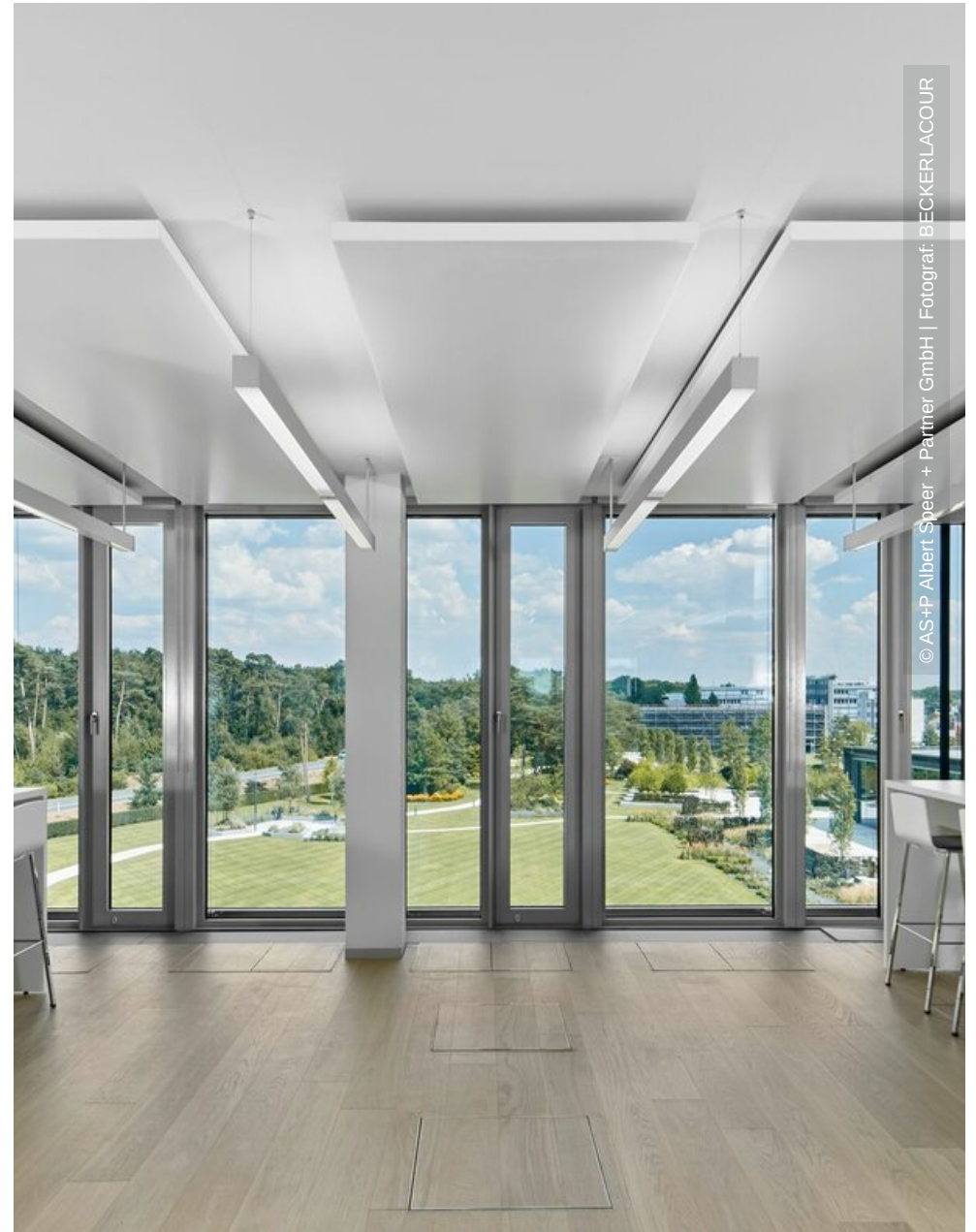


© AS+P Albert Speer + Partner GmbH | Fotograf: BECKERLACOUR





© AS+P Albert Speer + Partner GmbH | Fotograf: BECKERLACOUR



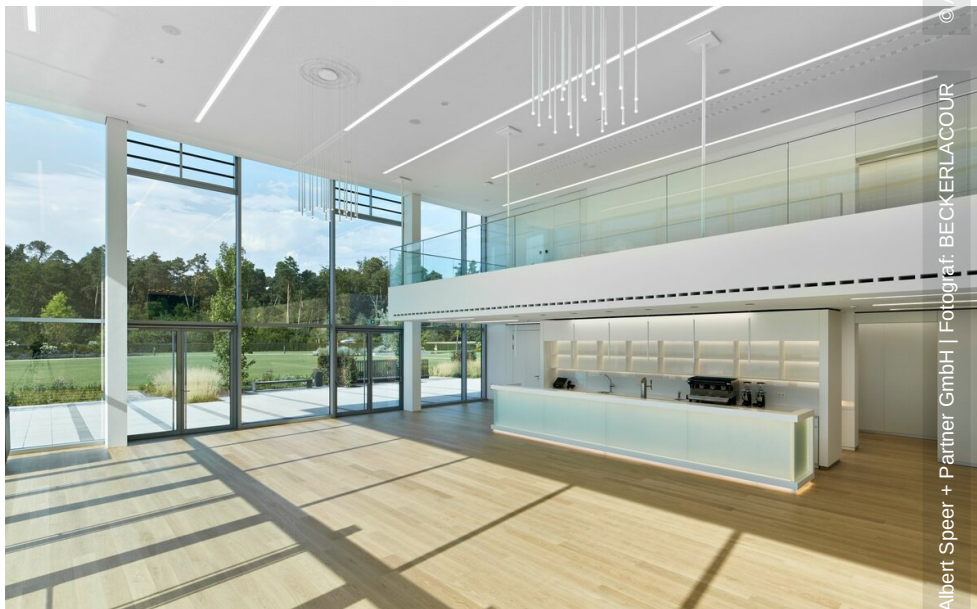
© AS+P Albert Speer + Partner GmbH | Fotograf: BECKERLACOUR



© AS+P Albert Speer + Partner GmbH | Fotograf: BECKERLACOUR



© AS+P Albert Speer + Partner GmbH | Fotograf: BECKERLACOUR



© AS+P Albert Speer + Partner GmbH | Fotograf: BECKERLACOUR



© AS+P Albert Speer + Partner GmbH | Fotograf: BECKERLACOUR

