

Axel-Springer-New Construction

Berlin, Germany





Project Description

With the new Axel Springer building, directly adjacent to the "golden" publishing building, the media and technology company is not only expanding its location in the heart of Berlin, but is also making an architectural statement here in relation to a new corporate culture. The futuristic-looking building, designed by Rem Koolhaas and his office OMA Rotterdam, embodies Axel Springer's transformation into a digital media house and offers the best conditions for new, interactive working methods. One of the highlights is the terraced, 45-meter-high atrium, with partly public areas and gastronomy, work and meeting points and generous visual contacts to Berlin's public life. With flexible office and cooperation areas, the building offers space for approximately 3,500 employees, distributed over a total of 11 upper floors, including newsrooms, TV studios and a green roof area for working together and taking breaks under the open sky.

Lindner floor and ceiling systems, among others, were used for a well-functioning spatial implementation of the new working environments. For example, it was decided to use different versions of the NORTEC raised floor system or the hollow floor FLOOR and more® in order to conceal miles of IT lines, fire barriers etc. in the floor over a large area. The expanded metal ceiling systems also functionally complement the room concept: integrated heating and cooling elements ensure efficient and constant temperature control, and the central suspensions also include luminaires, sprinklers and presence detectors. In addition, Lindner also implemented many of the individual design requirements, such as gold-coloured metal cladding in the access areas of the lifts, which create a visual reference to the adjacent Axel Springer high-rise building with its gold-coloured facade. Dry construction elements, other wall and ceiling panelling as well as doors were also adapted to the high-quality material

and colour concept in the new Axel Springer building and in part individually manufactured by Lindner.

General

Building Type	Office Buildings, Building certification, Industrial and commercial construction, Others
Company Division	Lindner SE, Lindner SE Floors, Lindner SE Heated and Chilled Ceilings
Completion	2018 - 2020
Architect	Office for Metropolitan Architecture
Client	Axel Springer SE
Building Certification	DGNB



Completed Works

- **Ceilings**

Expanded Metal Ceilings	
LMD-St 214	25000 sqm
Convection Elements	
Plafotherm® KN	
Hook-On Ceilings	
LMD-E 200	

- **Floors**

Calcium Sulphate Panels	
NORTEC	19500 sqm
FLOOR and more® comfort	800 sqm

- **Dry lining**

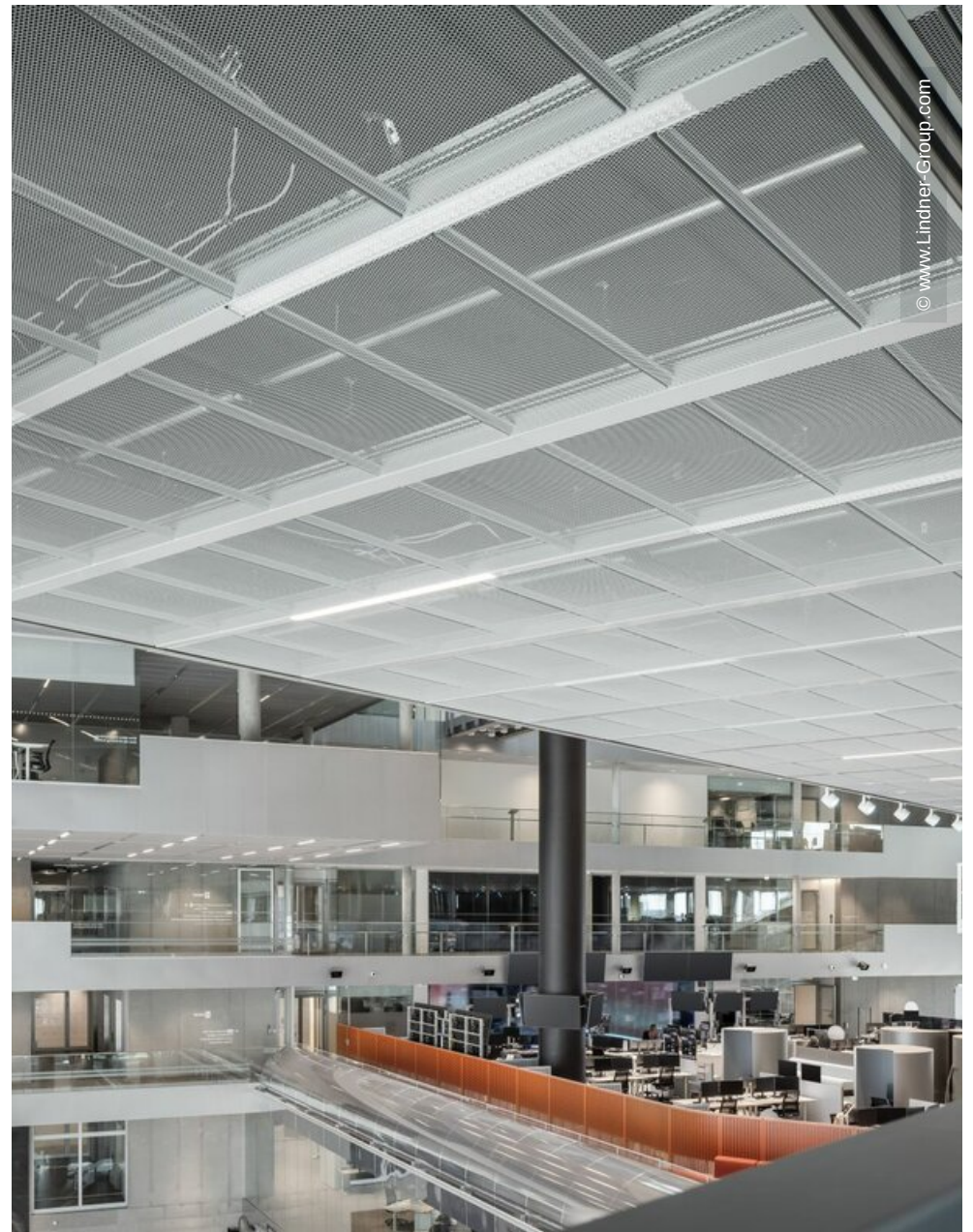
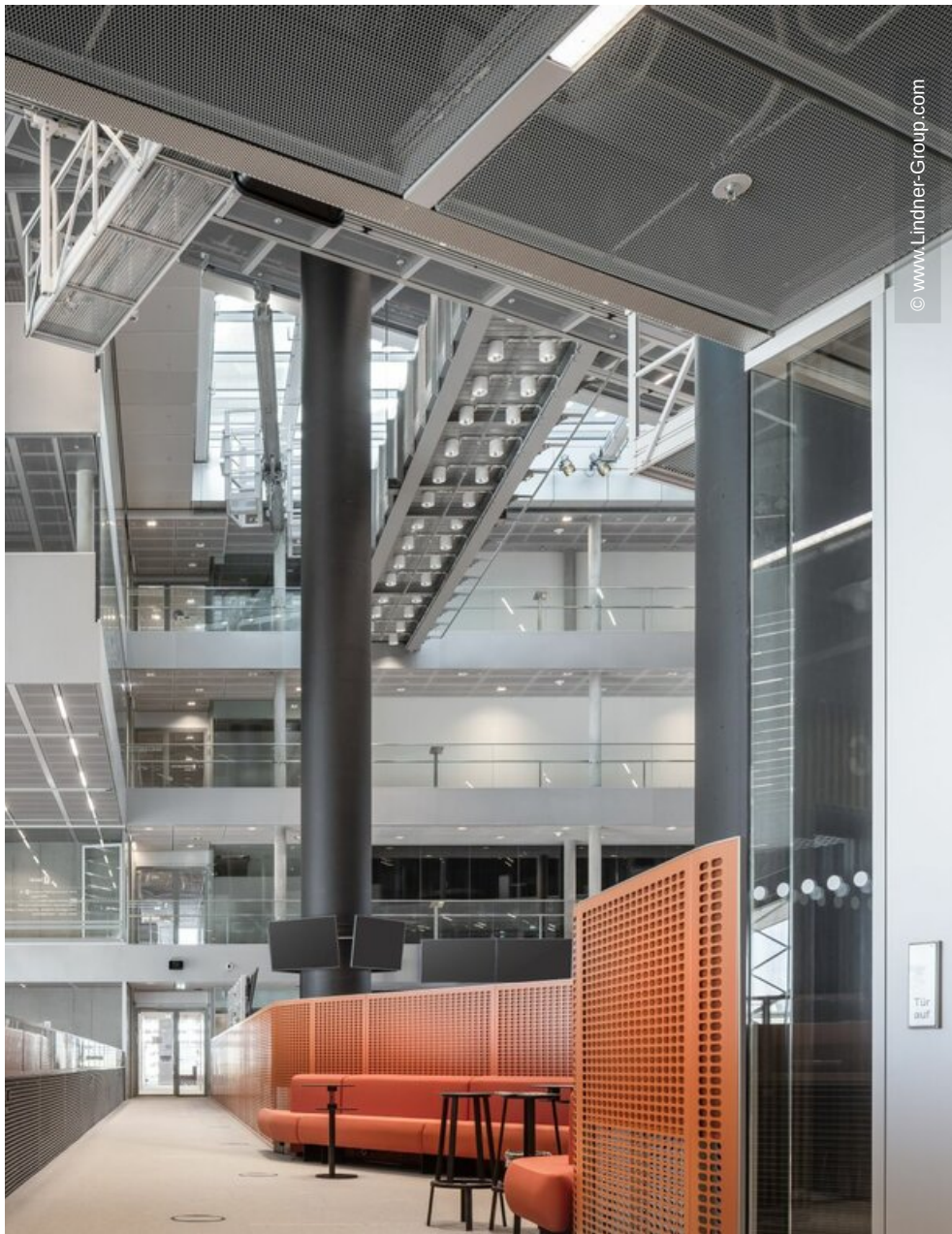
Plasterboard ceiling systems	2500 sqm
Plasterboard partition systems	13350 sqm

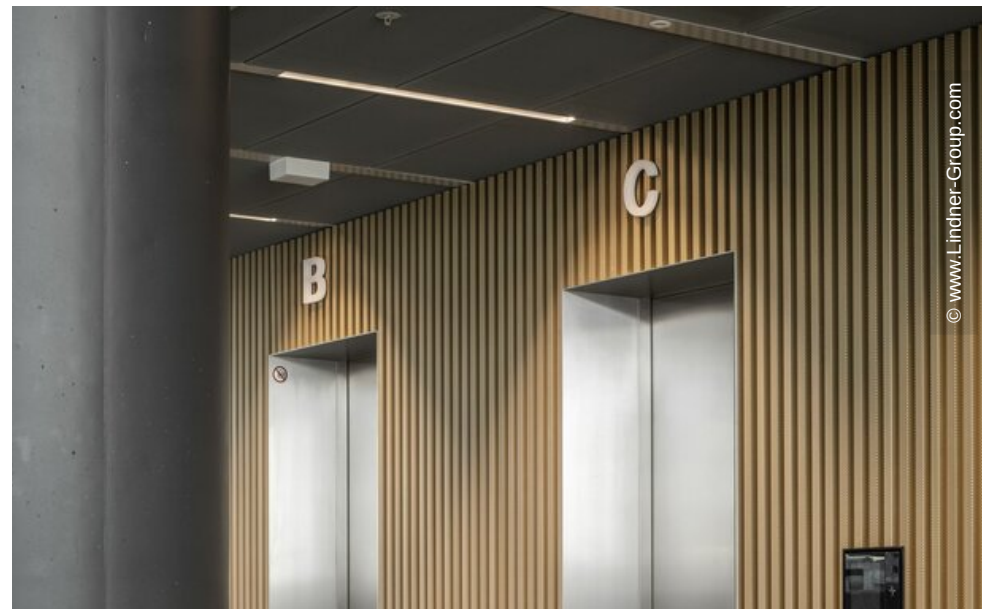
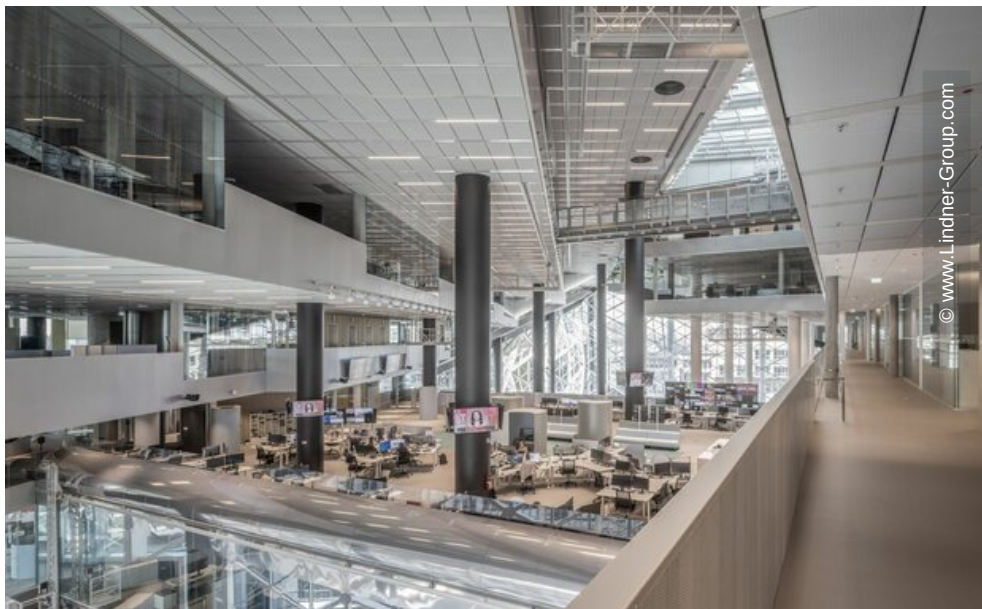
- **Partitions**

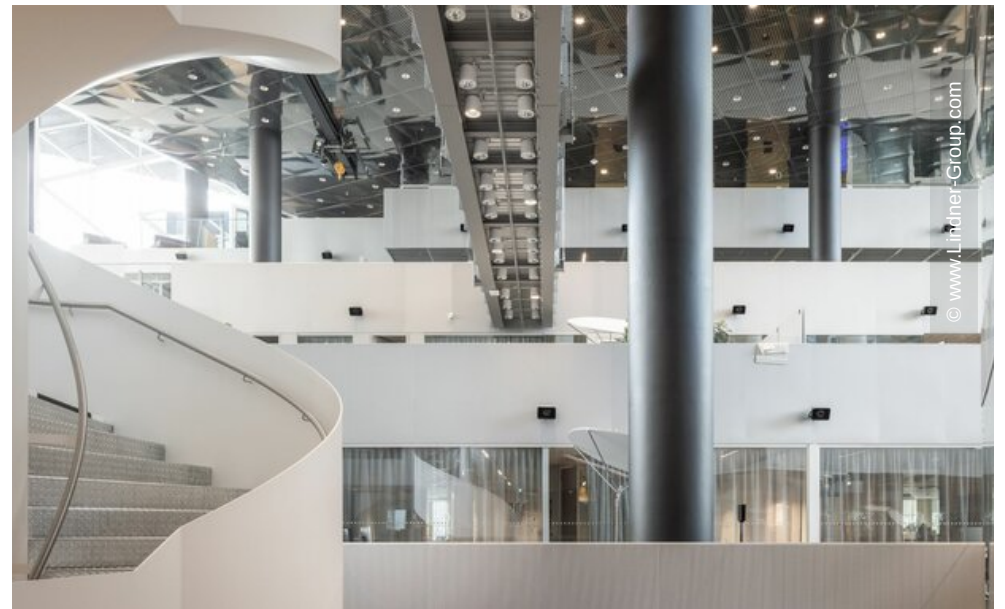
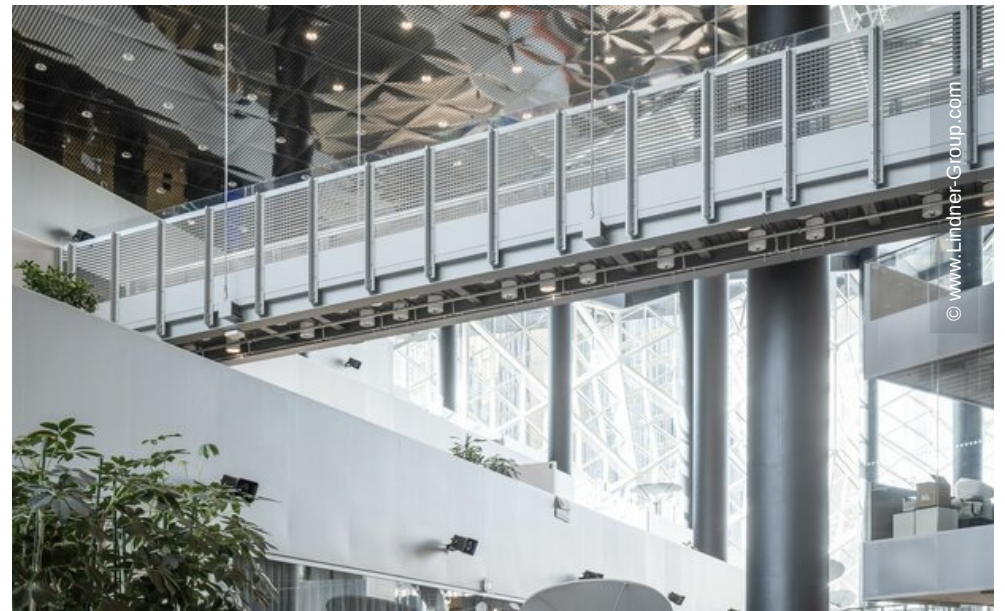
Wall and ceiling panels	5000 sqm
-------------------------	----------

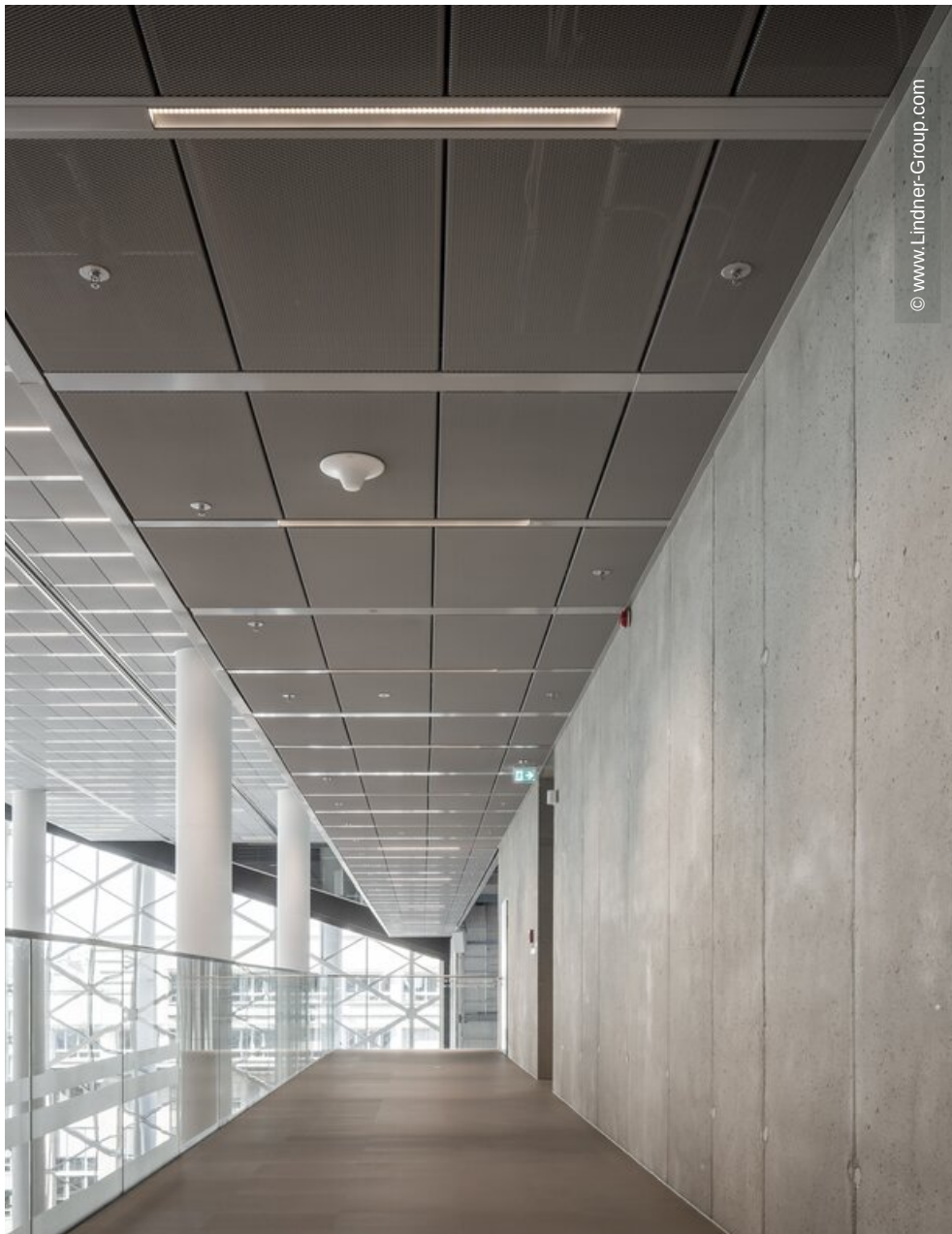
- **Doors**

• Insulation Engineering	1800 sqm
• Painting works	
• Metalworks	









© www.Lindner-Group.com