

# Generali Group Academy Trieste

Trieste, Italy





# Project Description

The imposing Palazzo Berlam towers majestically over the Gulf of Trieste. The building, built between 1926 and 1928 according to the design of Arduino Berlam, is one of the best examples of modernist architecture of the 20th century in Trieste. The palace was acquired by the Italian insurance company Generali in 1932 and has now been renovated according to the designs of the architect and designer Mario Bellini. Since its reopening, the Generali Group's historic building has been serving as an international training centre: In addition to the flexible, configurable training rooms equipped with the latest technology, the Generali Historical Archive, an auditorium and an event room are also housed there.

Lindner realised Plafotherm® GK HEKDA Heated and Chilled Plasterboard Ceilings in the historic building. Thanks to the heating and cooling by means of radiation, the economical ceiling system ensures a pleasant indoor climate without drafts during the trainings. The jointless surface of the ceiling was realised in a smooth design and with integrated luminaires. Even flexible shapes and height differences can easily be realised using the system.

# Completed Works

- Ceilings**  
Heated and Chilled Plasterboard Ceilings  
Plafotherm® GK HEKDA®  
1500 sqm

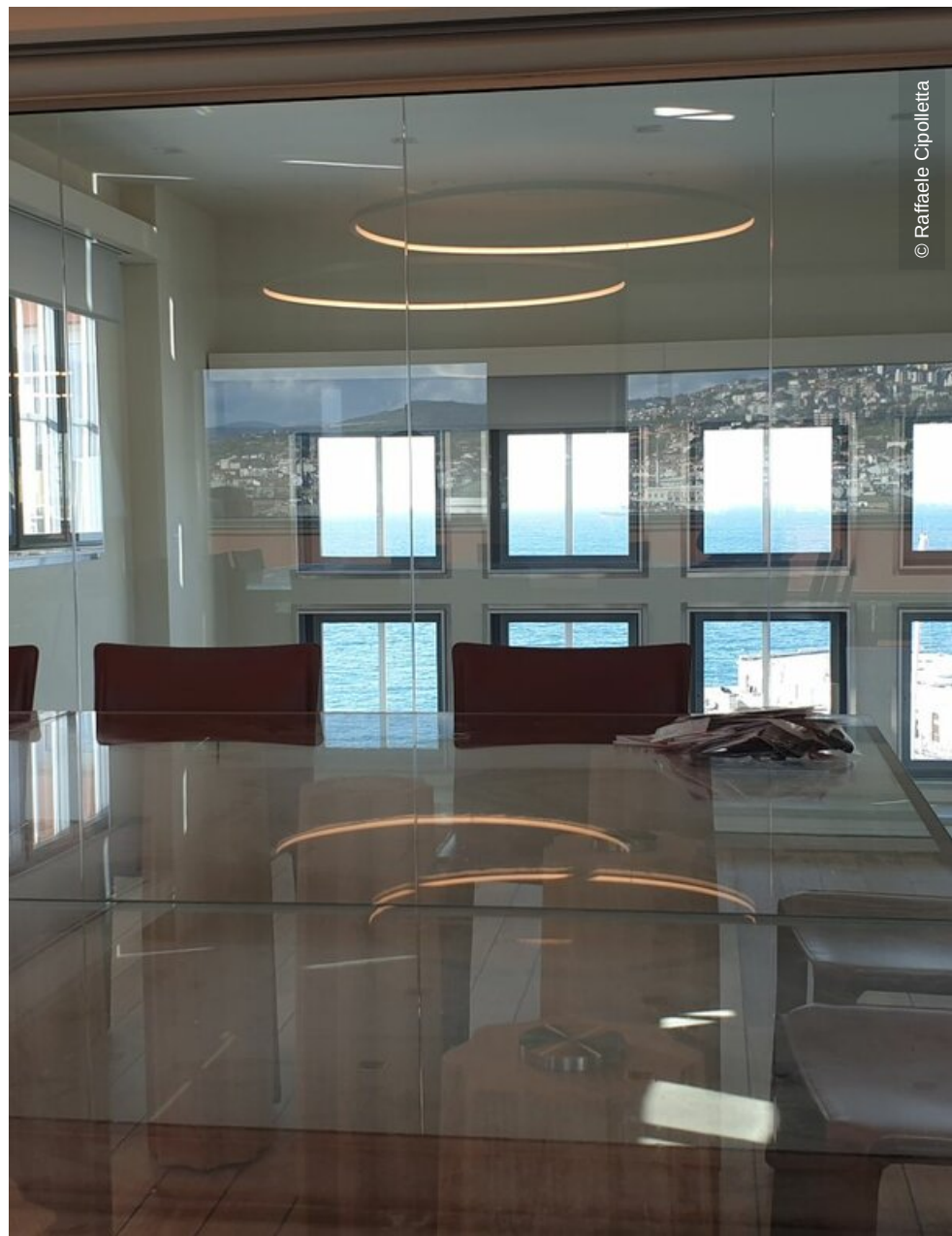
## General

Building Type	Office buildings
Company Division	Lindner SE I Interior Product Supply
Completion	2019
Client	Generali Real Estate SGR
Architect	Mario Bellini



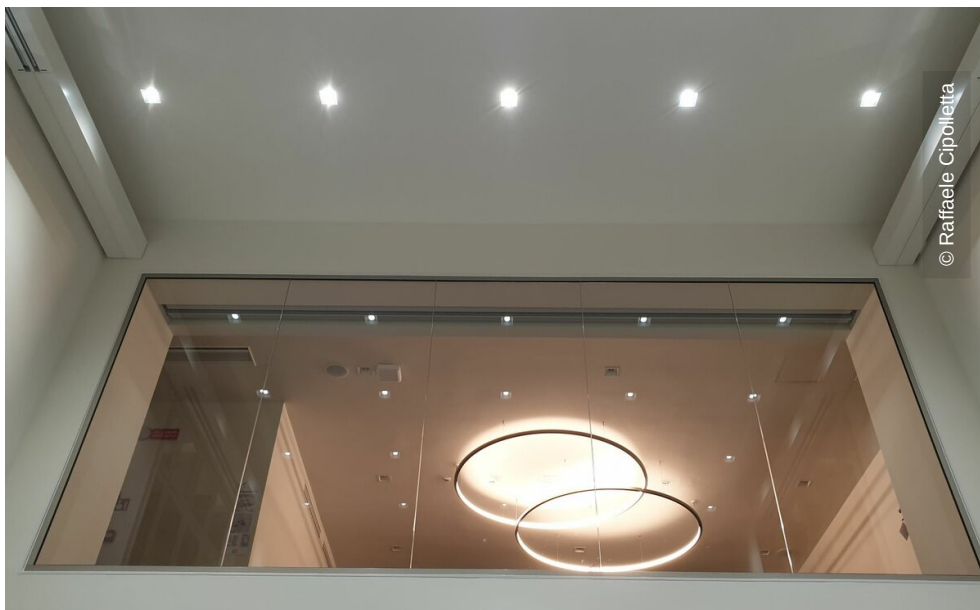


© Raffaele Cipoletta

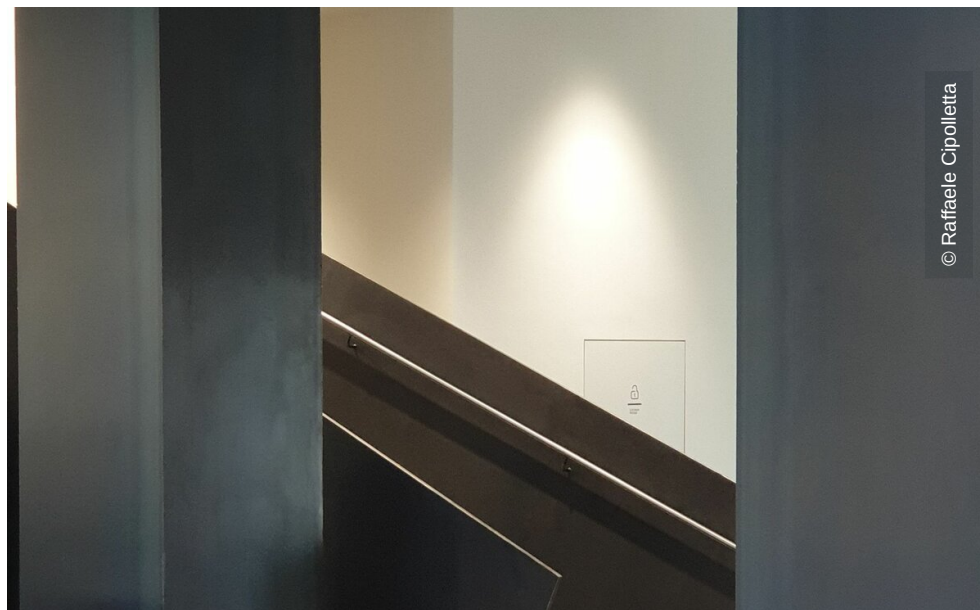


© Raffaele Cipoletta

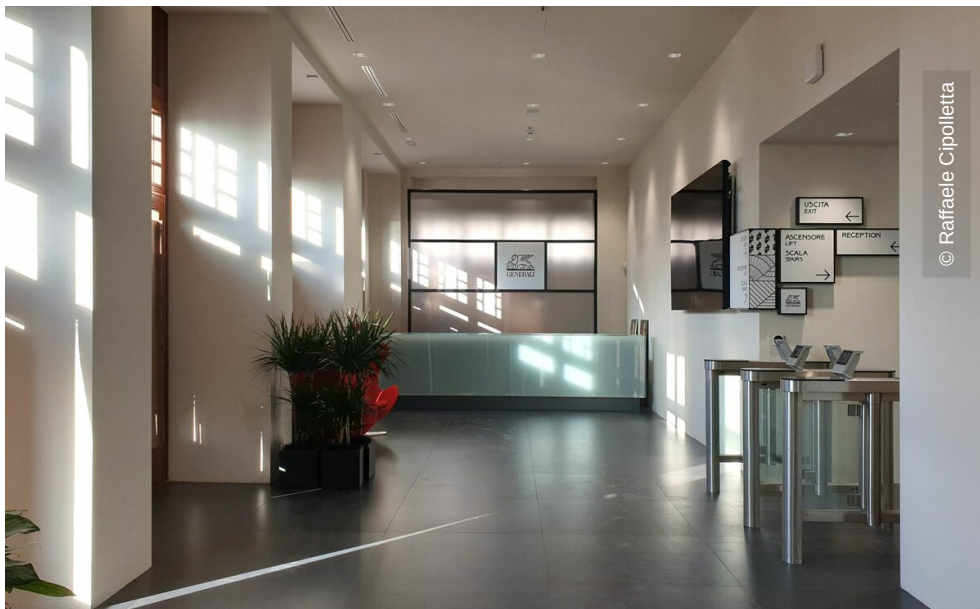




© Raffaele Cipolletta



© Raffaele Cipolletta



© Raffaele Cipolletta



© Raffaele Cipolletta

