

# KGS Niederrad

Frankfurt, Germany









# Project Description

Lindner was able to participate in the modernization of the school building. The individual areas were modernized during the ongoing school lessons. In order to guarantee a quick and easy implementation of the reconstruction work, the client decided to use the NORIT-Dry Screed.

## General

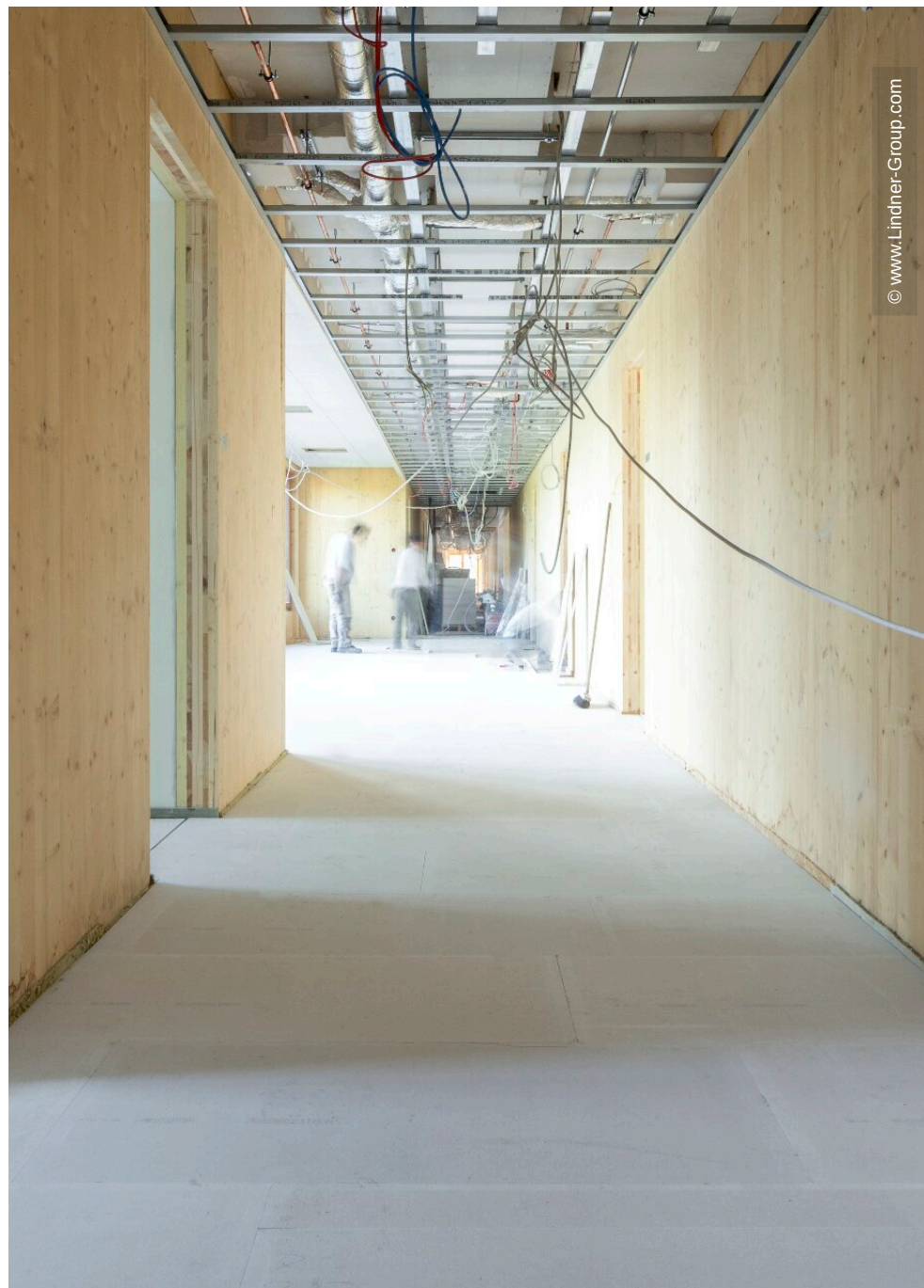
Building Type	Schools
Company Division	Lindner Gipsfaser- und Trockenbau
Completion	2018
Client	KGS Niederrad

## Completed Works

- Dry lining



© www.Lindner-Group.com

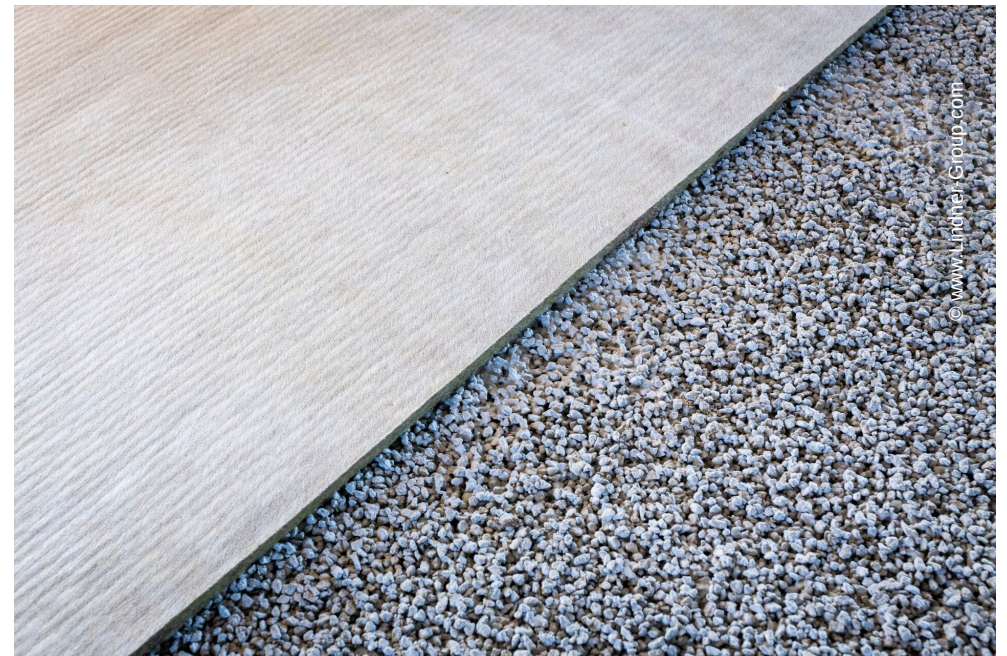


© www.Lindner-Group.com





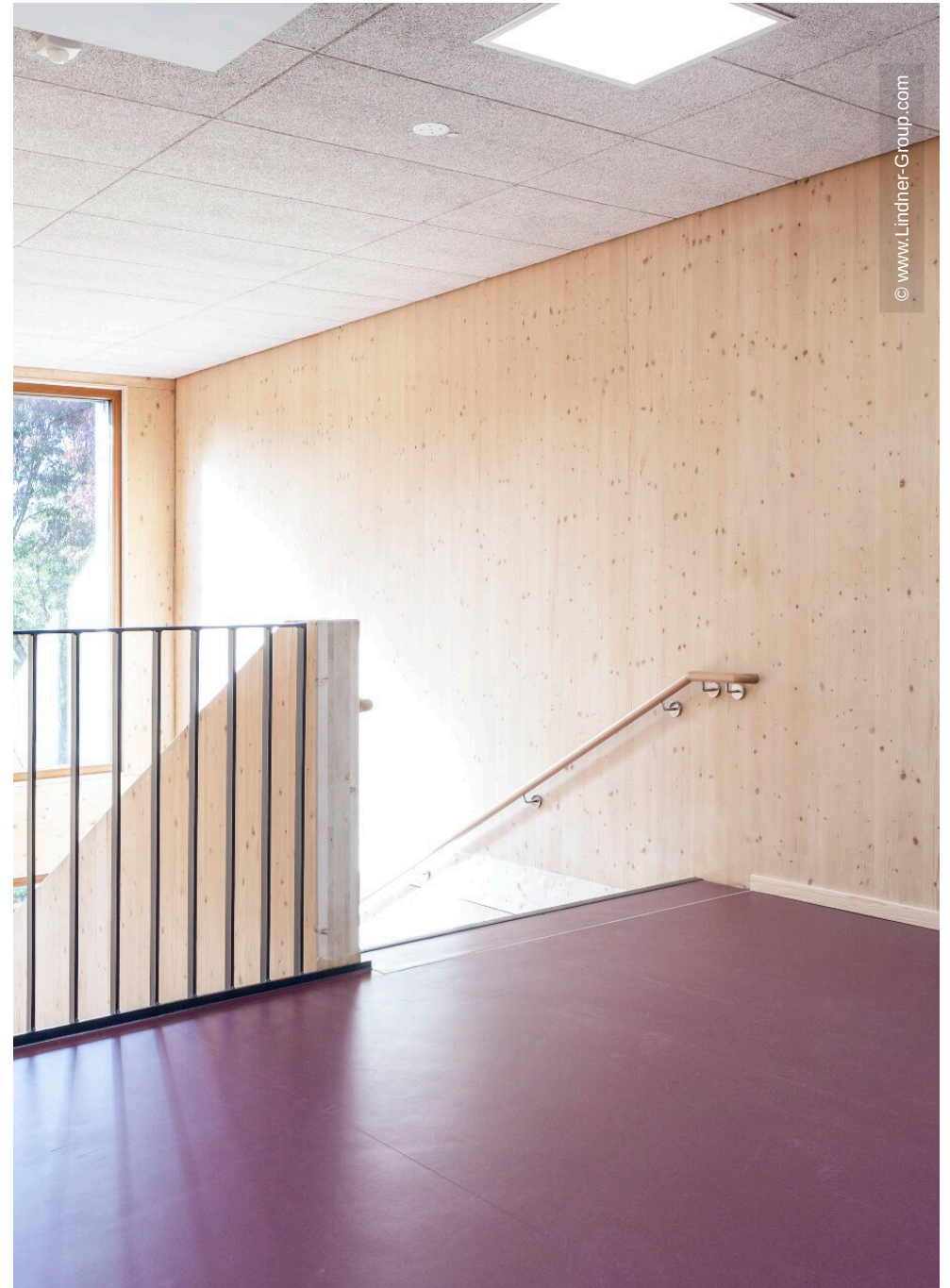








© www.Lindner-Group.com



© www.Lindner-Group.com