

# **DIN-Office**

Berlin, Germany





# Project Description

Over 100 years of the German Institute for Standardisation e. V. (DIN), of which the headquarters on Burggrafenstraße in Berlin has been in existence for around 50 years - reasons enough to tackle both a complete (energy-related) renovation of the ensemble (with parts of the building dating from the 1960s - 1990s) and to design a completely new working environment for the approximately 700 employees. The aim was to use the appropriate structural framework to drive forward the change in DIN's internal organisation and thus "new standards" for the 21st century. For this purpose, the small-scale floor plans were removed and the building was reduced to its basic static structure. The exterior facade was also newly "clad" and extended with a risalit over 10 storeys. Now the new DIN building, designed by Kim Nalleweg Architekten & klm-Architekten Berlin, appears as a calm, monolithic block with a prominent main entrance with open foyer, staff restaurant and roof terrace.

In 2019, the Lindner Group was awarded the contract for the expansion of the office worlds, including the upgrading of the building services and all electrical trades. In just 19 months, around 20,000 m² were transformed into modern, colour-coordinated working worlds with various workplace situations. In addition to high design standards, the focus was on a high level of room comfort and efficient function. Here, Lindner was not only responsible for the fit-out, but also supplied a large part of the installed systems, such as metal ceilings, partly installed as heating/cooling elements, or acoustically optimised wall panels. The work and meeting areas were separated with GK partitions, supplemented with Lindner glass partitions or wall elements with wooden surfaces. The wooden doors and door elements in smoked oak also come from Lindner, as does special furniture for the newly designed meeting and break zones. The project management according to lean construction methods ensured a smooth, on-time process. Thanks to collaborative and transparent planning and control, the project was successfully completed as a team,

despite all the challenges that renovation entails.

## General

Building Type	Office Buildings, Industrial and commercial construction
Company Division	Lindner Bautechnik GmbH, Lindner SE   Fit-Out Central.East Germany
Completion	2019 - 2021
Client	DIN e.V., Berlin
General Planning	KLM Architekten
Project Controller	BJP Ingenieure Leipzig
Specialist Planner	Winter Ingenieure, Berlin

## Completed Works

- **Ceilings**

Corridor Ceilings	
LMD-E 312	4500 sqm
Heated and Chilled Expanded Metal Ceilings	
Plafotherm® St 213	
Heated and Chilled Plasterboard Ceilings	
Plafotherm® GK HEKDA®	

- **Dry lining**

Plasterboard ceiling systems	2000 sqm
Plasterboard partition systems	12000 sqm

- **Partitions**

Partition Systems Glass	
Lindner Life Stereo 125	
Partition Systems Full Panel	
Lindner Logic 100 Timber	
Wall and ceiling panels	1300 sqm

- **Doors**

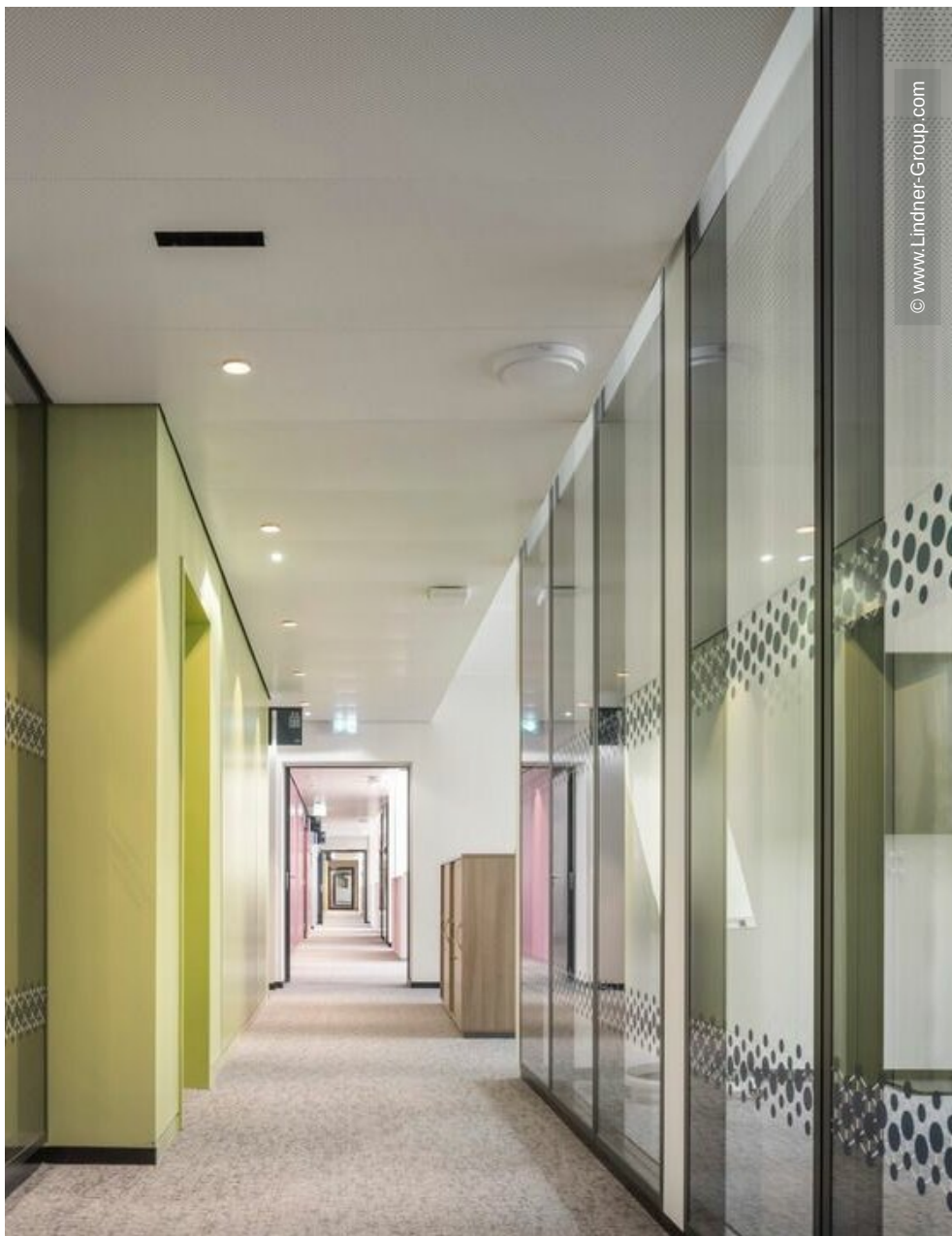
Wooden doors	350 Pcs.
Aluminium Tubular Frame Doors	250 FT2

- **Building services engineering**

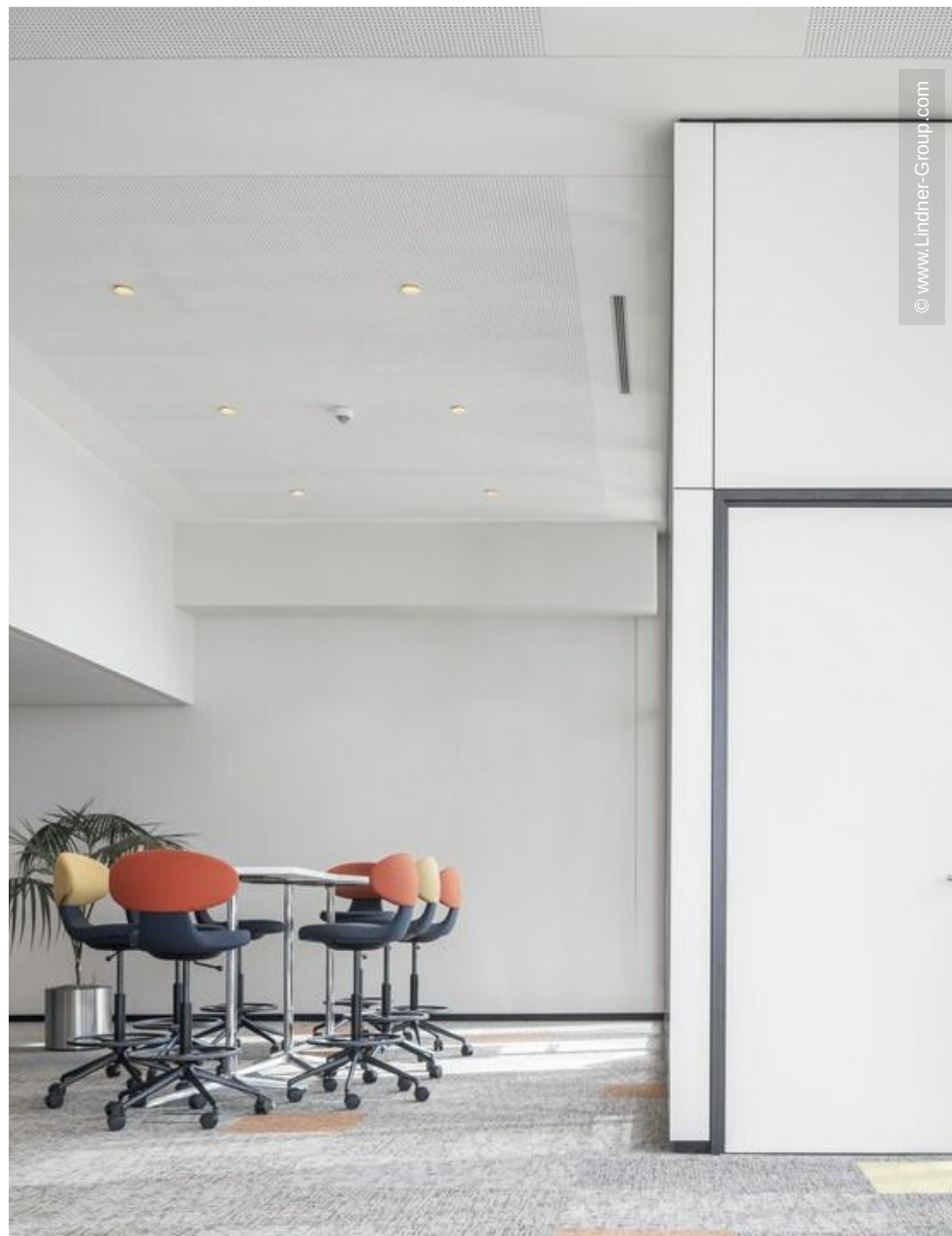
Air conditioning systems

- **General Contracting**

Screed works  
Floor coating works  
Plastering works  
Painting works  
Tiling works  
Natural and artificial stone works  
Insulation Engineering  
Furniture



© www.Lindner-Group.com



© www.Lindner-Group.com



