

Quartier Heidestrasse, Berlin - Fit-Out QH CORE

Berlin, Germany

 **Lindner**



© www.Lindner-Group.com

Project Description

Quartier Heidestrasse in the heart of Berlin is one of the many major projects for which Lindner SE was commissioned as a reliable full-service provider. With the QH Core, QH Spring and QH Track, Lindner received orders for numerous sub-projects of the construction project. With the signing of the contract in 2020, the foundation stone has already been laid for many years of cooperation until 2023. QH Core, with its eye-catching brick facade, fits ideally into the Berlin cityscape and perfectly reflects the neo-modern industrial character of the former railway and commercial area.

QH Core includes offices, flats, restaurants as well as retail space. Here, Lindner was not only responsible for the interior fit-out, but also supplied and installed products from its own production - including various Lindner partition systems, doors, hollow and raised floor systems, as well as ceiling systems.

The landscaped inner courtyard around which the building is built forms the centre and tranquillity of the complex. Here, residential tenants enjoy a wonderful view of the greenery, while the offices and other usable areas face Heidestraße.

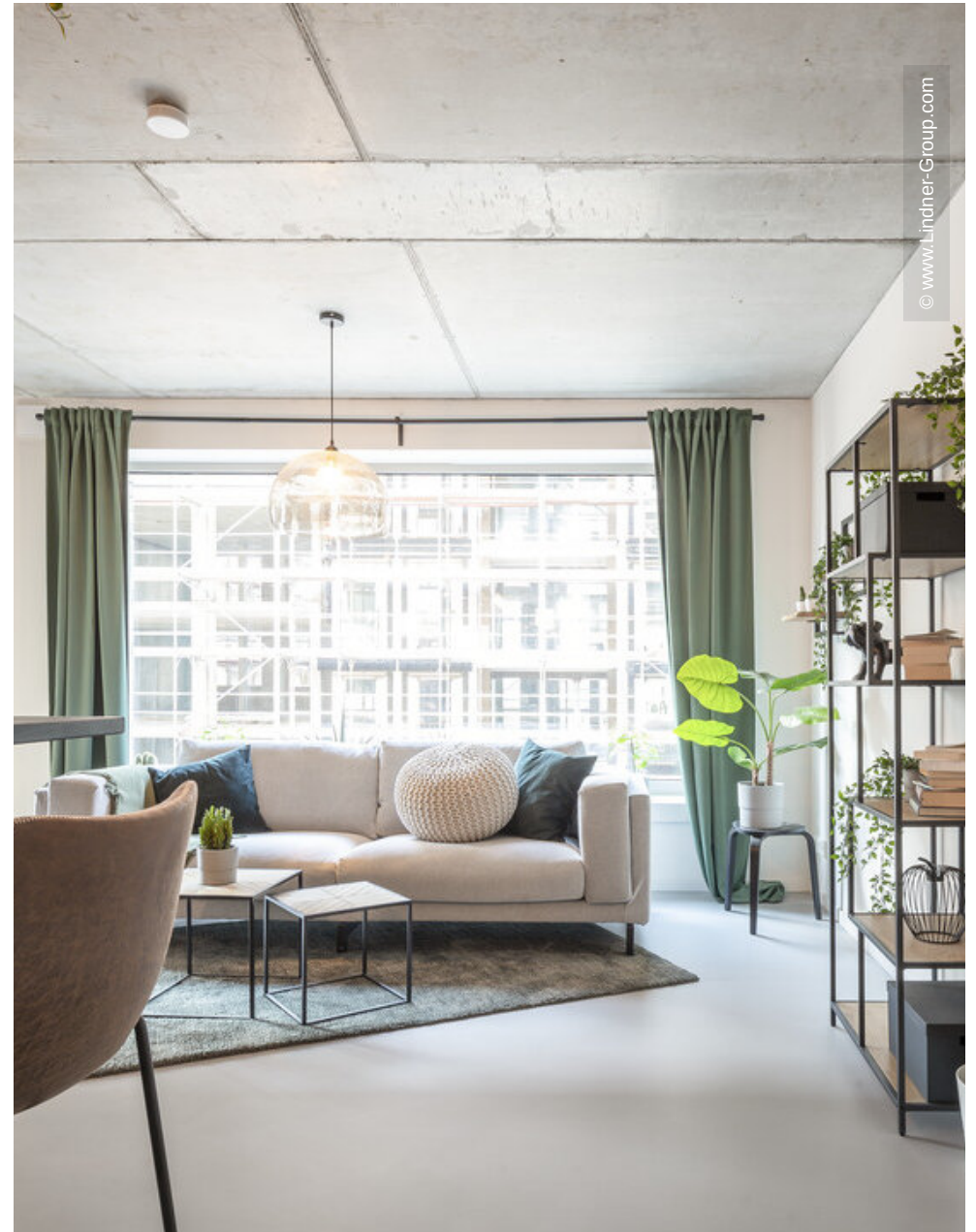
General

Building Type	Office Buildings, Businesses, Recreation and Culture, Hotels and Resorts, Industrial and commercial construction
Company Division	Lindner SE Fit-Out Central.East Germany, Lindner SE Partitions, Lindner SE Floors, Lindner SE Ceilings
Completion	2018 - 2021

Client	Quartier Heidestraße GmbH
Architect	RobertNeun Architekten GmbH

Completed Works

- **Ceilings**
 - Heated and Chilled Canopy Ceilings
Plafotherm® DS 320 2600 sqm
- **Floors**
 - Nasshohlboden
CAVOPEX 9600 sqm
 - Calcium Sulphate Panels
NORTEC 900 sqm
- **Partitions**
 - Partition Systems Glass
Lindner Life Stereo 125 600 sqm
- **Doors**
 - Wooden doors 890 Pcs.
 - Aluminium Tubular Frame Doors
ATB 68 70 Pcs.
- **General Contracting**
 - Plasterboard partition systems 13300 sqm
 - Plasterboard ceiling systems 850 sqm
 - Insulation Engineering
 - Carpentry
 - Metalworks
 - Tiling works
 - Screed works
 - Construction site equipment
 - Painting works
 - Floor coating works
 - Cleaning works





© www.Lindner-Group.com



© www.Lindner-Group.com



© www.Lindner-Group.com



© www.Lindner-Group.com

