

Maria-Ward-Schulen

Nuremberg, Germany





Project Description

After the holidays in 2022, the time had come: around 1,200 pupils and over 150 teachers were able to move into the ‘most modern school in Bavaria’ at Keßlerplatz in Nuremberg. The new Maria-Ward-Schule for Girls is an alliance of a primary school, secondary school and grammar school and offers plenty of space for modern, well-equipped classrooms as well as space for group and project work on 23,500 m² of gross floor area. The centrepiece of the new building is the atrium, which can be used both as an auditorium and a multifunctional event venue and offers a view of the inner courtyard through large glass surfaces. When designing the school, the clients from the Archdiocese of Bamberg and architects from H2M paid attention to high-quality materials with a feel-good factor, a coordinated lighting and colour concept and optimum room acoustics.

Lindner SE | Partitions and Lindner SE | Interior Fit-Out and Furnishings were largely responsible for the detailed interior design with lots of glass, silver fir, brass, exposed concrete and a colour concept with 32 colours. Lindner developed a new glass partition wall in which the glass walls could be installed frameless thanks to grooves in the floor and ceiling. In order to fulfil all fire protection requirements in the various rooms, the doors and glass wall systems were designed in F0, F30 and F90 as required. Another special architectural detail: the wooden door leaves were integrated seamlessly into the glass walls without an additional frame. Silver fir or brass was chosen as the surface finish.

These materials can also be found in the wall panelling and built-in furniture, which were manufactured by Lindner Objektdesign in its own factory. Other special solutions included an elliptical counter made of brass, curved lawns made of artificial turf, designer furniture in the group/

work areas as well as ultra-modern teaching kitchens and special teaching desks in the classrooms.

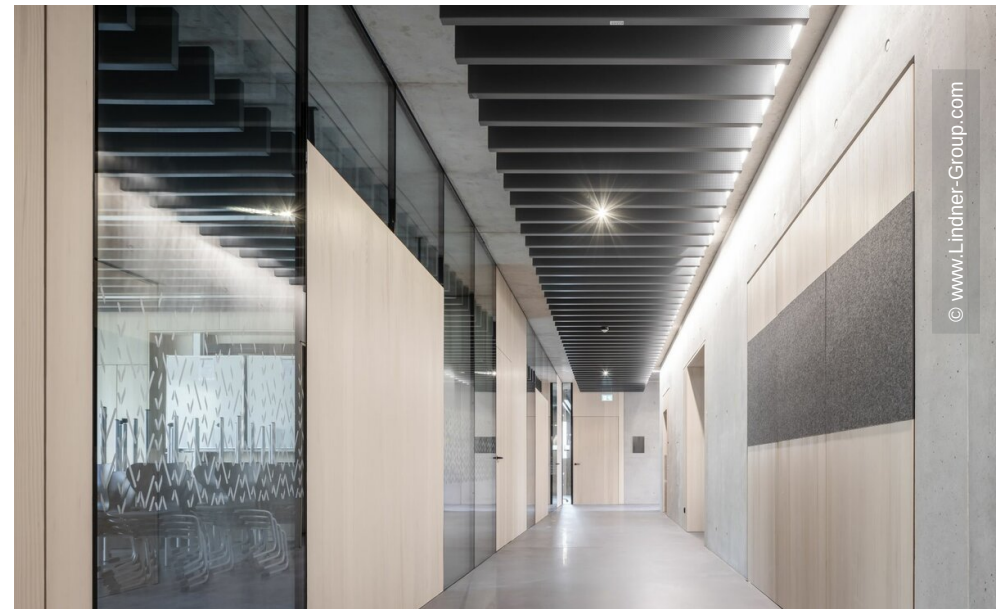
General

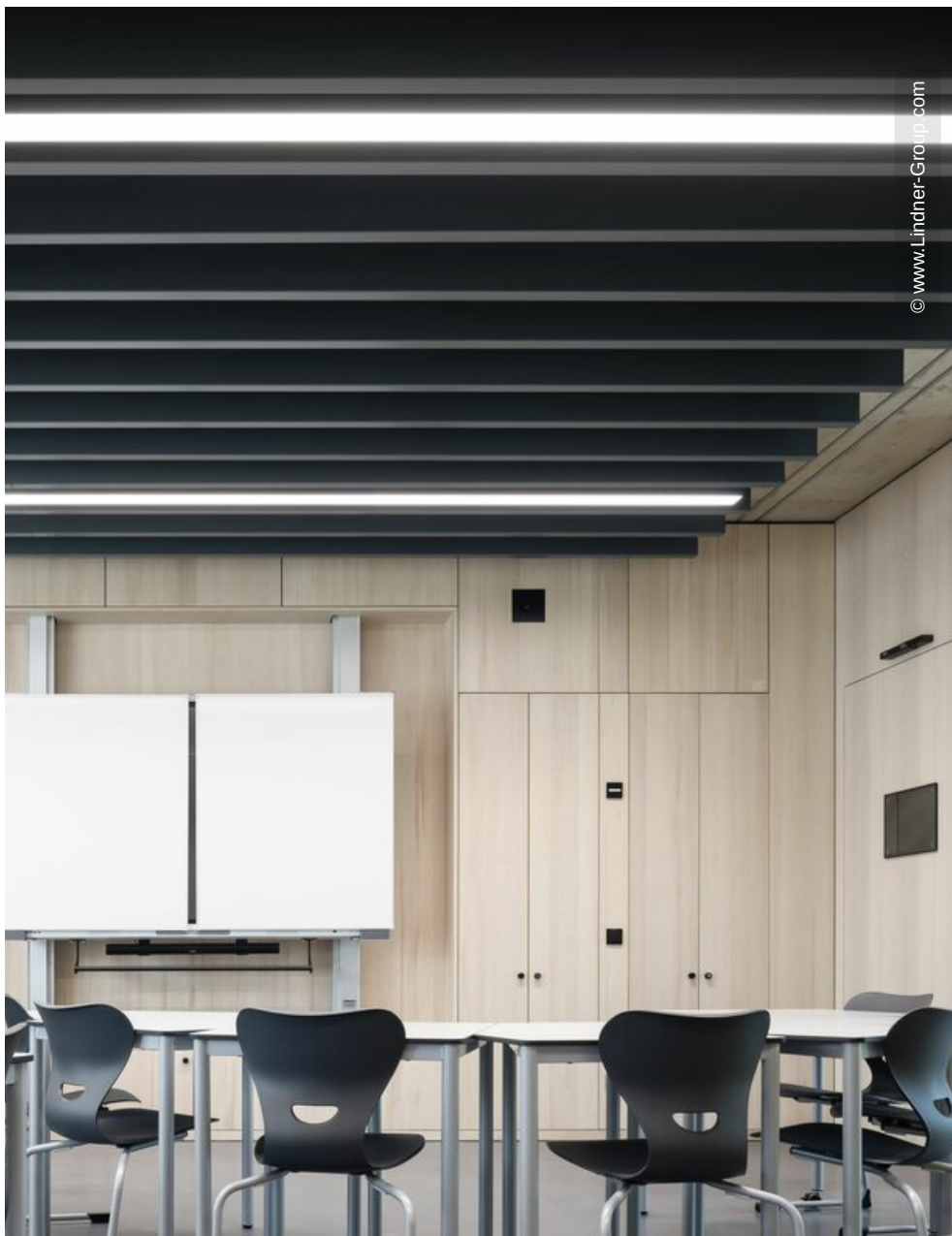
Building Type	Schools, Public and institutional buildings
Company Division	Lindner SE Partitions, Lindner SE Interior
Completion	2020 - 2022
Client	Erzbistum Bamberg
Architect	H2M Architekten

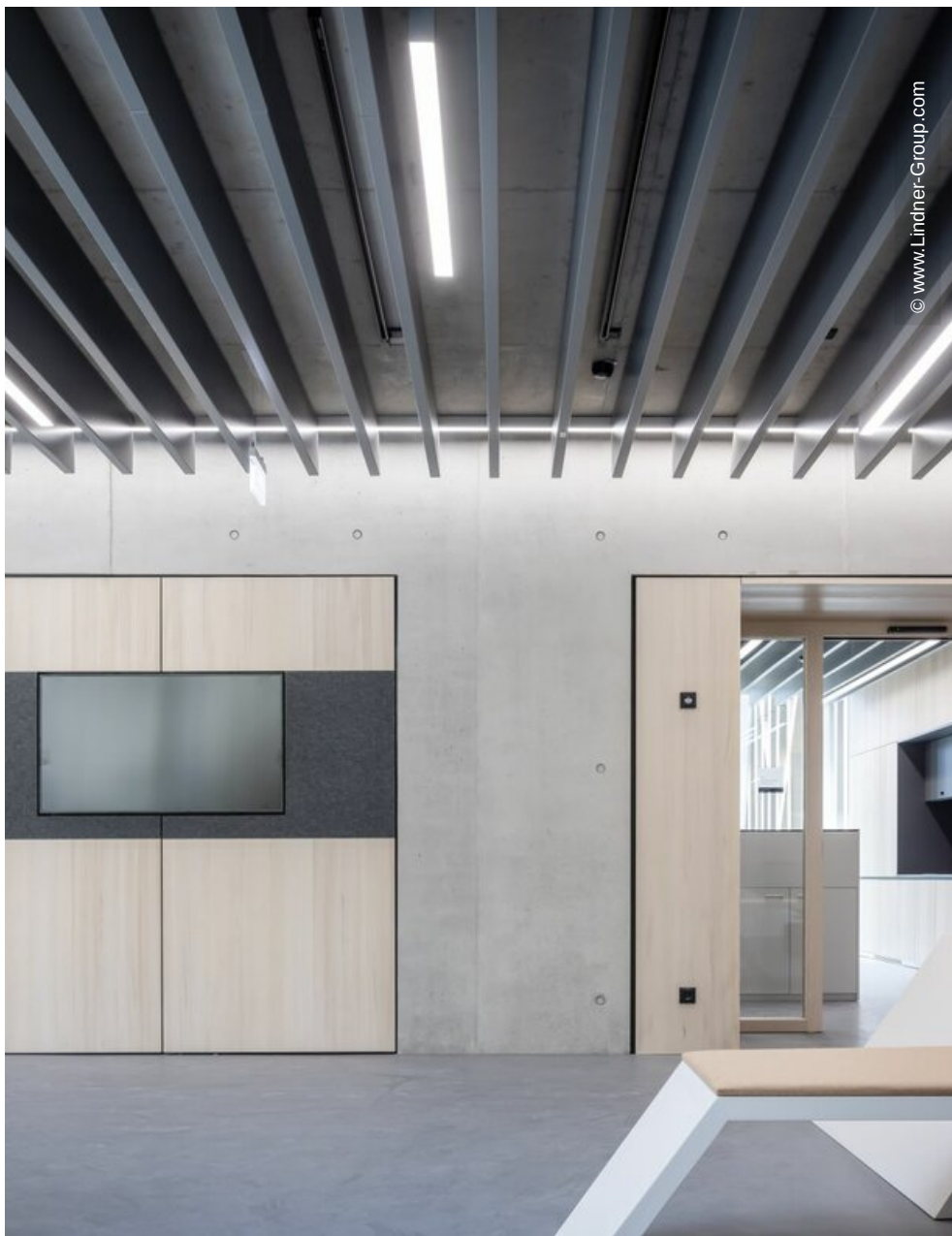
Completed Works

• Partitions	
Partition Systems Glass	
Lindner Life Fire	1150 sqm
Wall and ceiling panels	3550 sqm
• Doors	
Wooden doors	325 Pcs.
Glass doors	185 Pcs.
• Other services	
Furniture	

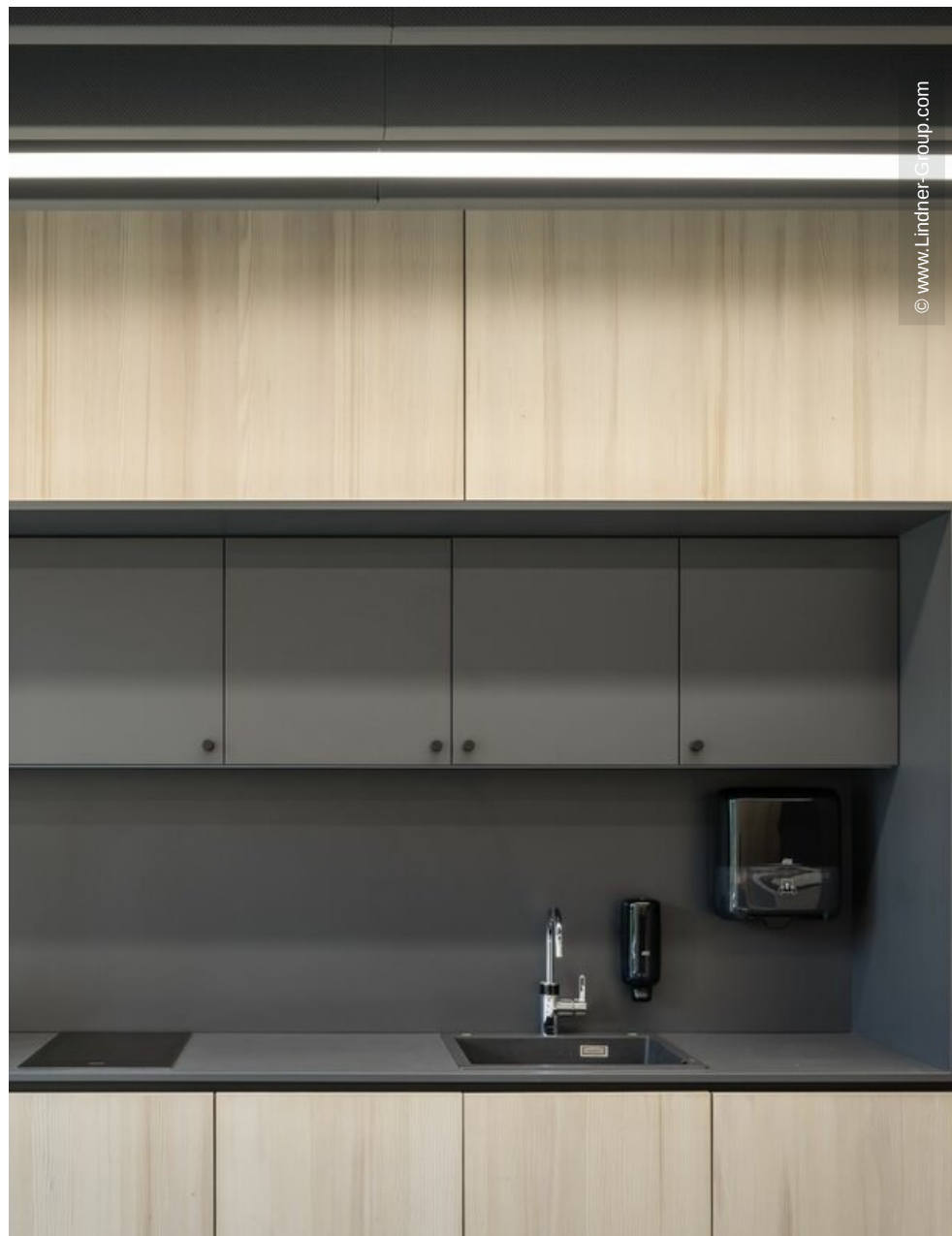








© www.Lindner-Group.com



© www.Lindner-Group.com

