

Tenant Fit-Out SKAI Prodware

Hamburg, Germany





Project Description

The SKAI is a gigantic office building at Hamburg's Sandtorpark, which fits perfectly into the historic Speicherstadt with its dark red façade. The office space within the building has been leased to various companies – including the Prodware Group, an innovative company in the field of Microsoft technologies and digital transformation. The office worlds are just as modern and future-oriented as the technology company: Cosy meeting corners, elegant conference rooms and contemporary workplaces line the rental spaces.

The Lindner Group was commissioned with the tenant fit-out and deconstruction for Prodware's new corporate headquarters in the SKAI. The Lindner Life Clear glass partitions provide an elegant and transparent division of the individual rooms and allow maximum flexibility thanks to easy assembly and disassembly. The experts from the Lindner Group also took on numerous technical building equipment works, including refrigeration, ventilation, electrical engineering and sanitation. Various tiling, flooring, painting and carpentry work as well as drywall construction and associated doors complete the tenant fit-out.

Completed Works

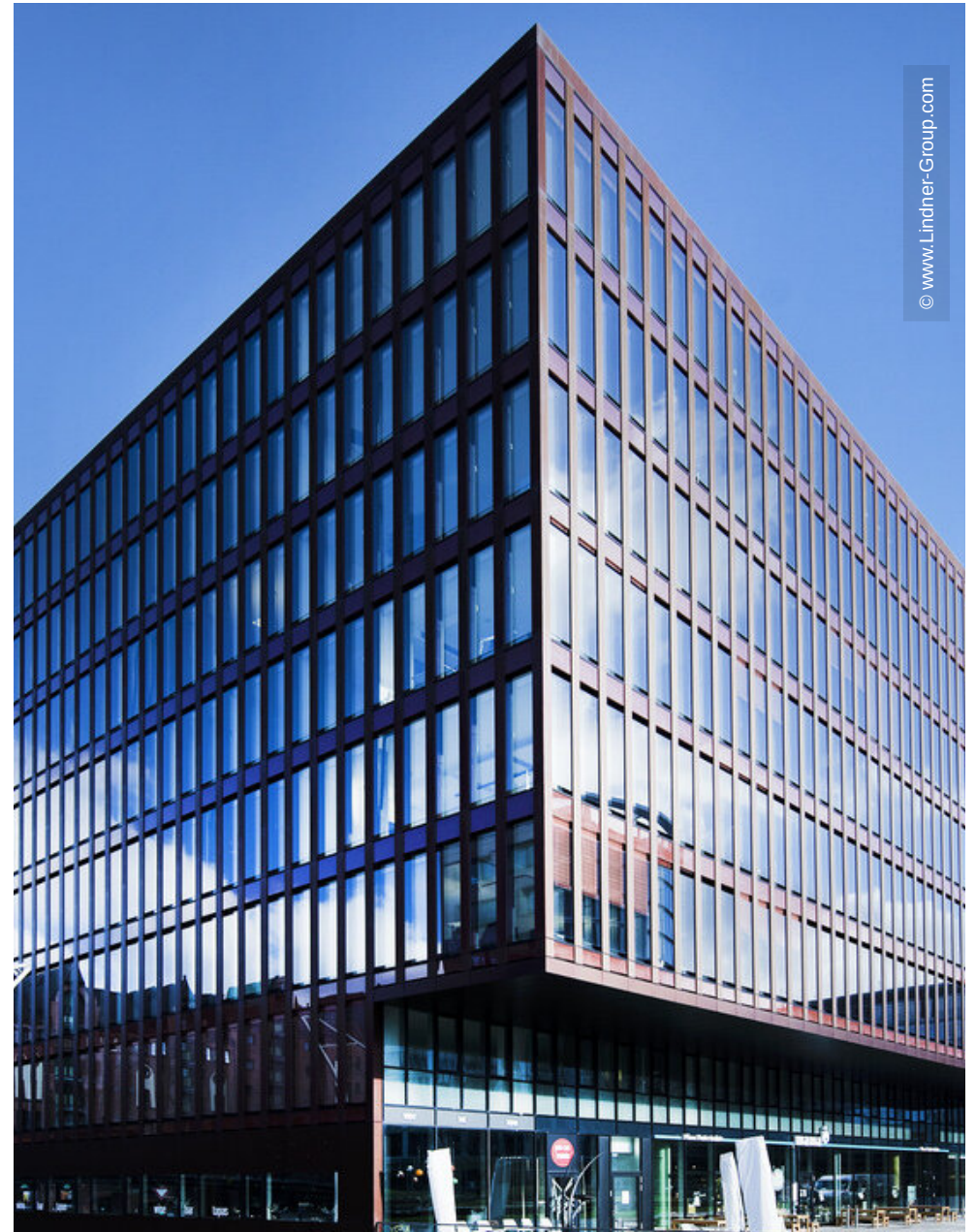
- **Building services engineering**
- **Partitions**
 - Partition Systems Glass
 - Lindner Life Clear
- **Tenant fit-out**
 - Floor covering works
 - Painting works
 - Carpentry
 - Tiling works

General

| | |
|------------------|--|
| Building Type | Office Buildings, Industrial and commercial construction |
| Company Division | Lindner SE Fit-Out North.Northwest Germany |
| Completion | 2021 |
| Client | Pembroke S-Kai GmbH |
| Architect | Bierod Arch. |



© www.Lindner-Group.com



© www.Lindner-Group.com



