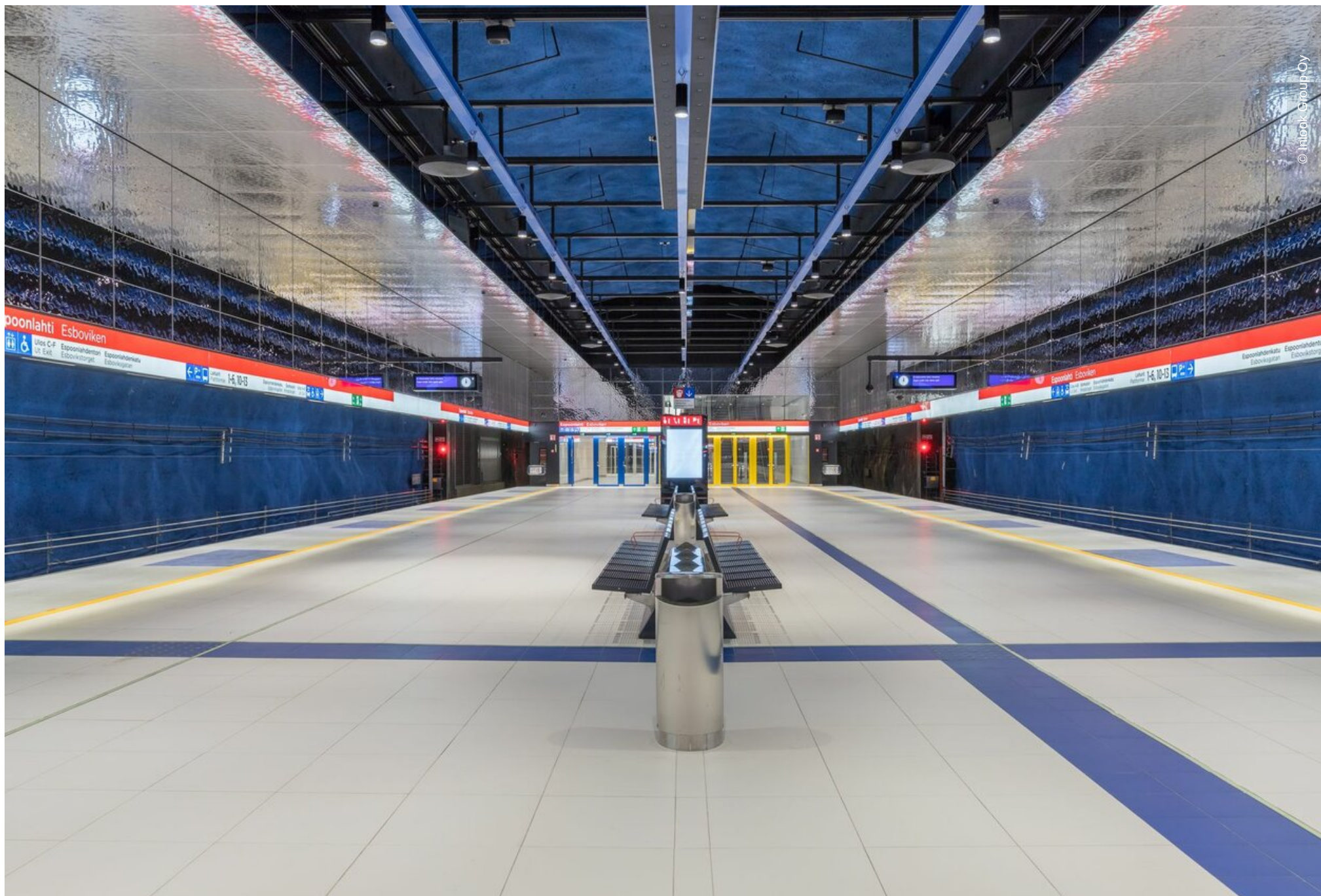


Metro Station Espoonlahti

Espoo, Finland





Project Description

Metal Ceilings

4400 sqm

One of Finland’s in vogue metro stations was built in 2022 at the heart of Helsinki’s business district, Espoo. Inspired by a swimming pool, ALA Architects displayed magnificent colour, light and material palette at the Espoonlahti train and metro station.

Passengers imagine themselves at the bottom of a huge swimming pool when they look up to 4400 m2 of Lindner’s special mirrored ceilings. The ceiling’s chrome surface resembles lapping waves and rippled water surface, while the tilted surface reflects the light and brightens the metro station. The special ceiling solutions with scattered perforations, fitted in the platforms, complement the light and sound works by Hans Rosenström entitled "Shadows on the surface of the water". These ceilings with perforation have high absorption values that minimises noise disturbance in the metro station.

General

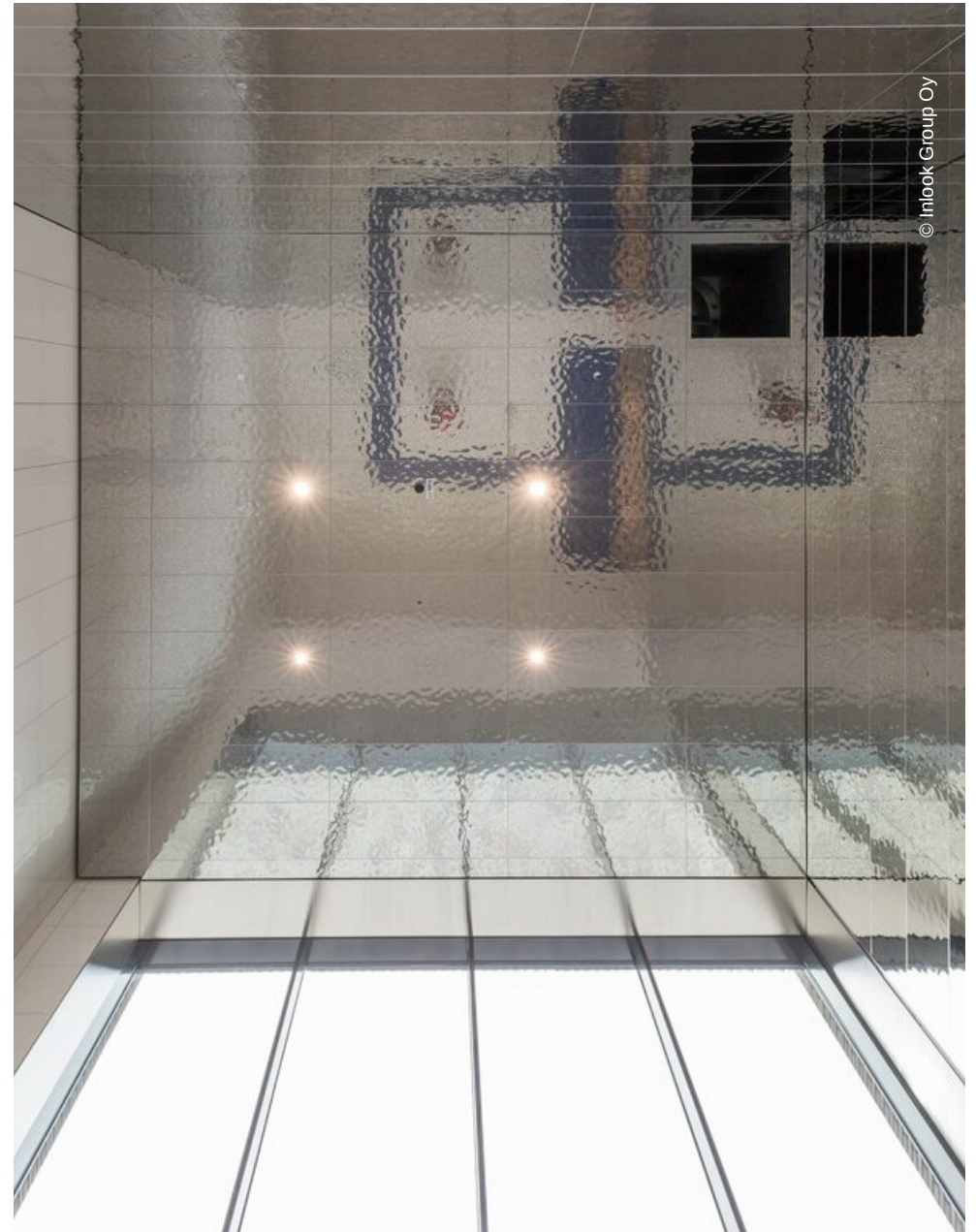
Building Type	Subways and Tunnels
Company Division	Lindner SE Ceilings, Lindner SE I International Projects Contracting
Completion	2022
Architect	ALA Architects Ltd. & SMS Architects

Completed Works

- Ceilings



© Inlook Group Oy



© Inlook Group Oy



© Inlook Group Oy



© Inlook Group Oy



© Inlook Group Oy



© Inlook Group Oy