

Global Tower

Frankfurt, Germany





Project Description

The Global Tower in Frankfurt am Main is a revitalisation of the former Commerzbank tower built in 1972. In addition to high requirements for building conservation, particularly the preservation of the heritage-protected facade, the focus was primarily on implementing a modern, innovative office concept with state-of-the-art equipment. On 30 floors, the office tower offers numerous lounge and work areas with flexible design options thanks to modern wall installation system partition walls.

During the core renovation of the Frankfurt office tower, the Lindner Group was entrusted with the complete basic fit-out and one of the tenant fit-outs. In addition to carrying out various drywall works, high quality raised floors and energy-efficient heated and chilled ceilings were installed in combination with lighting systems from Lindner. High-quality wooden doors from Lindner's own production, related joinery work, as well as flexible system glass partitions complete the construction package. Lindner also carried out plastering and painting work as well as tile, coating and flooring work, and additional installation services.

Despite numerous challenges such as (heritage-protected) construction in existing buildings and the high logistical effort involved, the vision of a modern office tower was successfully realized. Thanks to sustainable construction systems and building services combined with effective thermal insulation measures, the Global Tower is set to be awarded with the DGNB Platinum certification.

General

Building Type	Office Buildings, Building certification, Industrial and commercial construction, Others
---------------	--

Company Division

Lindner SE | Ceilings, Lindner SE | Floors,
Lindner SE | Luminaires, Lindner SE |
Partitions, Lindner SE | Fit-Out Central.East
Germany

Completion

2019 - 2022

Building certification

DGNB



Completed Works

- **Floors**

Raised Floors

- **Ceilings**

Heated and Chilled Plasterboard Ceilings

Plafotherm® GK HEKDA®

Heated and Chilled Post Cap Ceilings

Plafotherm® B 100

Heated and Chilled Canopy Ceilings

Plafotherm® DS 320

Heated and Chilled Baffle Ceilings

Plafotherm® L 608

- **Partitions**

Partition Systems Full Panel

Lindner Logic 100 Timber

Partition Systems Glass

Lindner Life Stereo 125

- **Luminaires**

System luminaires for metal ceilings

- **Other services**

Screed works

Plastering works

Painting works

Floor covering works

Floor coating works

Tiling works

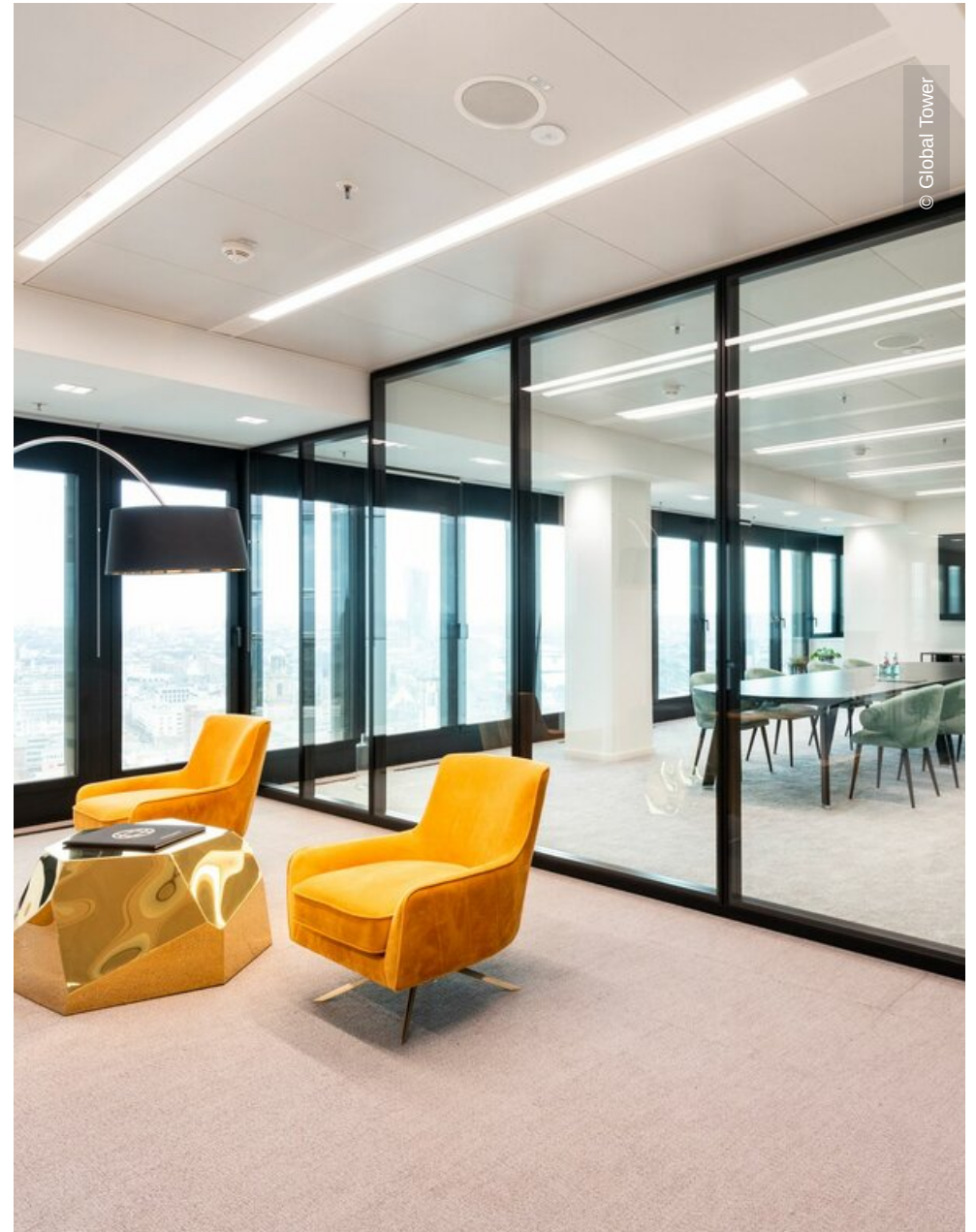
Carpentry

Plasterboard ceiling systems

Plasterboard partition systems



© Global Tower



© Global Tower

