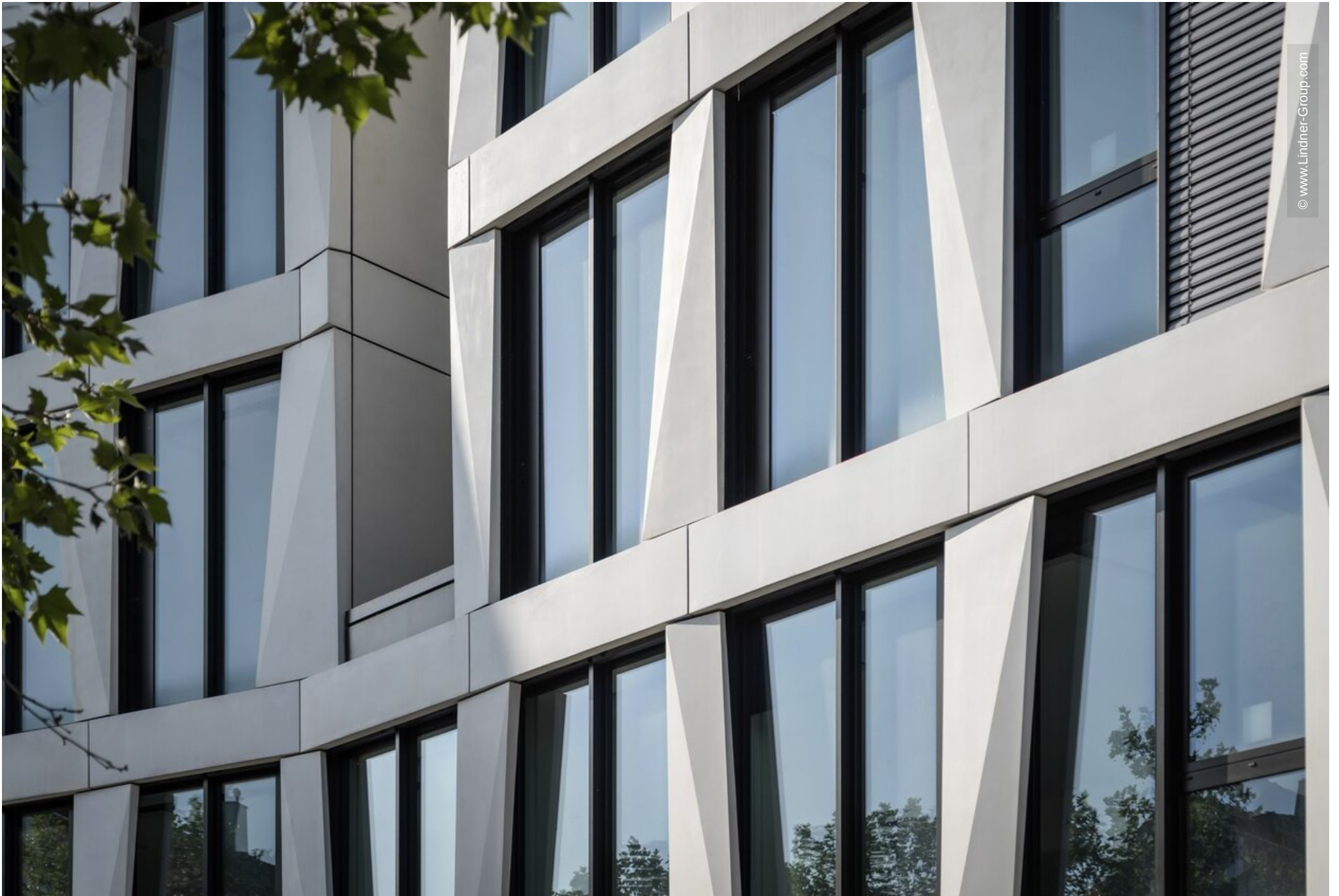


MARK Munich

Munich, Germany





Project Description

"A new gateway to the West" is how the 55,000 m² MARK office building presents itself, centrally located on the main suburban train line between Pasing and Munich Central Station. The four-part building complex extends over more than 200 metres and is up to eight stories high. Even from a distance, the MARK stands out with its striking, folded façade structure with three-dimensional façade elements, slight building setbacks and offset terrace areas on the upper floors. Depending on the sunlight, this creates a surprising lightness and individual play of light on the building.

The main part of the façade, a total of approx. 18,600 m² of element façade, consists in its basic structure of two floor-to-ceiling windows embedded in black aluminium profiles, framed by curtain-type, three-dimensional GFB elements in white. Lindner manufactured 1,891 individual façade elements for this, which were prefabricated completely including windows in their own production and later attached to starter profiles on the building on site. Lindner also manufactured the 4,500 m² of 13 mm thin yet very stable LinCrete GFB elements in its own factory.

To prevent heavy dirt deposits on the white GFB façade elements, a special coating was subsequently applied: thanks to the active principle of photocatalysis, this has a self-cleaning surface effect on the one hand and actively cleans the air of nitrogen oxides through the natural exposure-rain cycle on the other.

In addition to the element façade with curtain-type glass fibre concrete cladding, Lindner also supplied black mullion and transom façades and cold façade elements, four smoke and heat extraction systems, various exterior doors, such as revolving drum doors for the main entrance areas,

glass railings for the upper floors and 1,400 running metres of parapet. In total, Lindner Building Envelope manufactured, delivered and installed approx. 20,500 m² of various façade solutions and special solutions for the MARK Munich in a construction period of 1.5 years.

General

Building Type	Office Buildings, Industrial and commercial construction
Company Division	Lindner Building Envelope GmbH
Completion	2020 - 2022
Architect	KSP Jürgen Engel Architekten

Completed Works

- **Glass-Fibre Reinforced Concrete**
LinCrete 1897 Pcs.
- **Facades**
Unitized Curtain Wall System 18600 sqm
Stick-Curtain Walling 2000 sqm
- Building services insulation

