

# Hapag Lloyd Ballindamm

Hamburg, Germany





# Project Description

At the heart of Hamburg, on the historic Ballindamm, lies the headquarters of the world's leading liner shipping company, Hapag-Lloyd. With 280 state-of-the-art container ships and a global team of nearly 16,600 employees in 140 countries, Hapag-Lloyd sets standards in the maritime industry. The goal of modernising the working environment of the headquarters was achieved through an extensive revitalisation of the office spaces. The focus was on the dissolution of individual offices and the creation of an open work environment, while the ongoing operation in other areas of the building continue. Another challenge was respecting the listed architecture of the old building and incorporating it into the newly designed concept.

The Lindner Group was responsible for a large part of the fit-out work with the division Tenant Fit-Out Design & Build, developing and installing high-quality solutions for individual requirements alongside standard systems. Glass partition walls allow for efficient room division, while natural light and light channels from the in-house Leuchtenfabrik create an inviting atmosphere and optimal lighting conditions in the offices. In addition to supplying and installing, Lindner also provided basic tenant fit-out services.

Fire protection measures, high-quality tiling, painting and electrical installations, as well as custom-made tea kitchens and final cleaning works complete the Lindner Group's fit-out package.

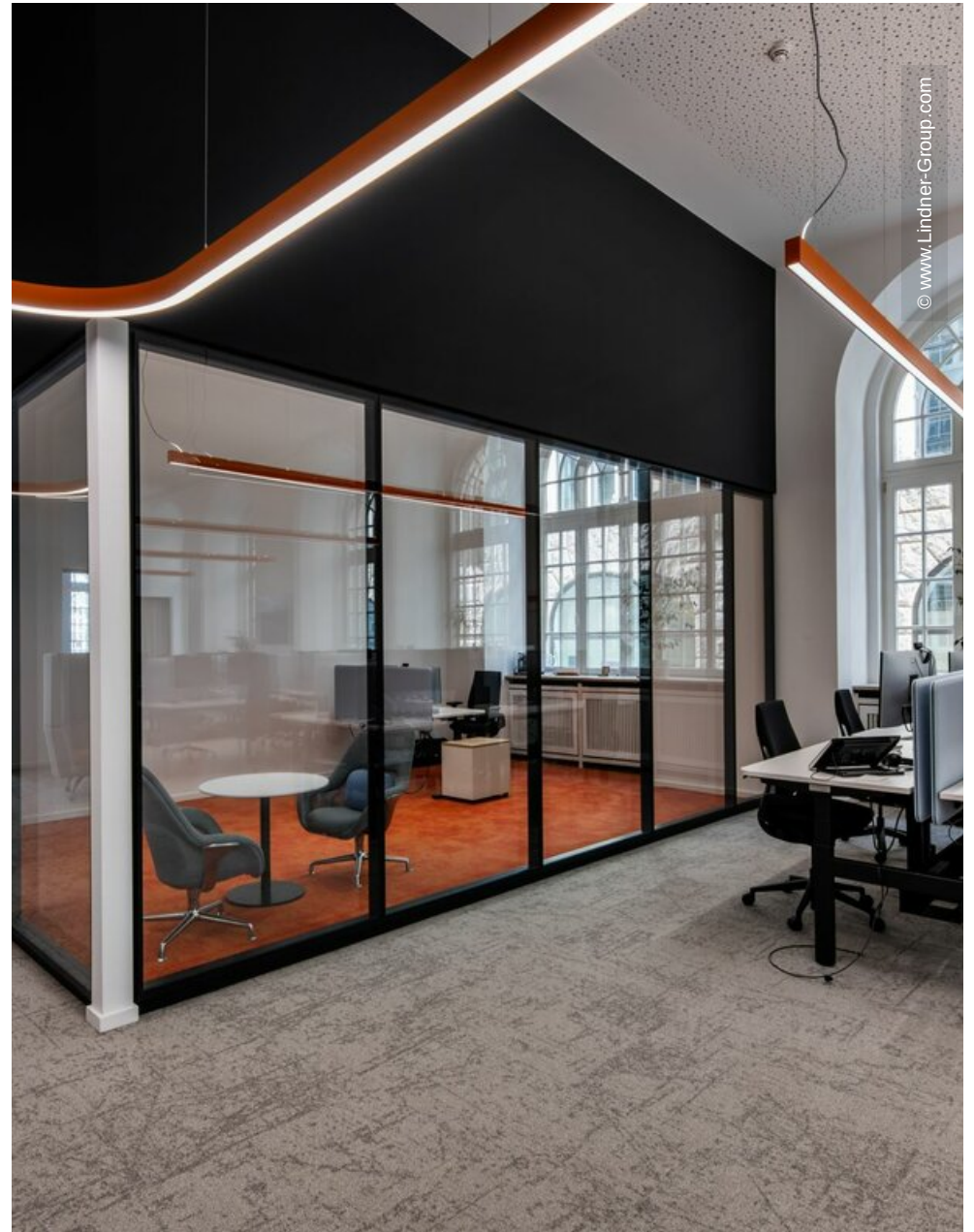
## General

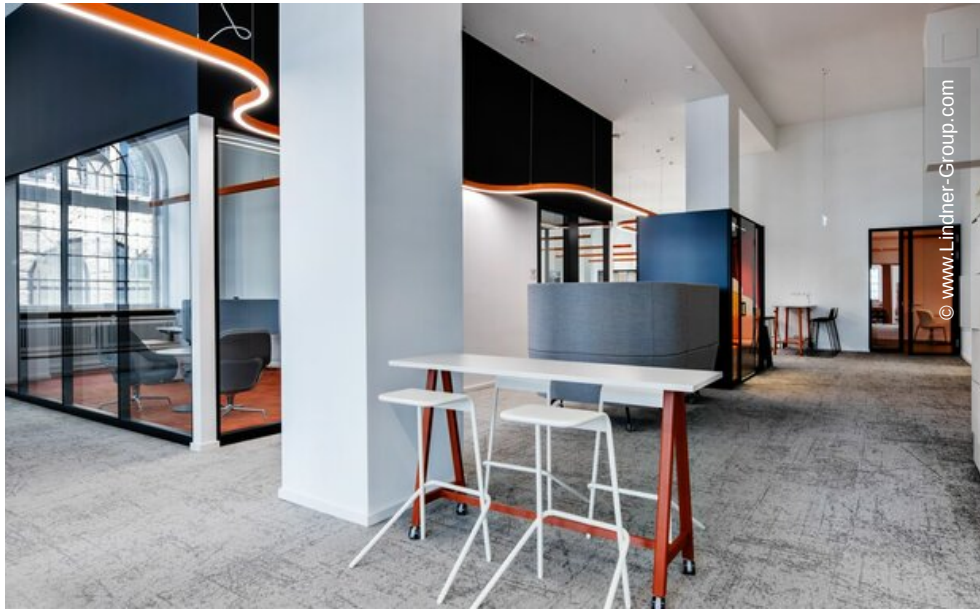
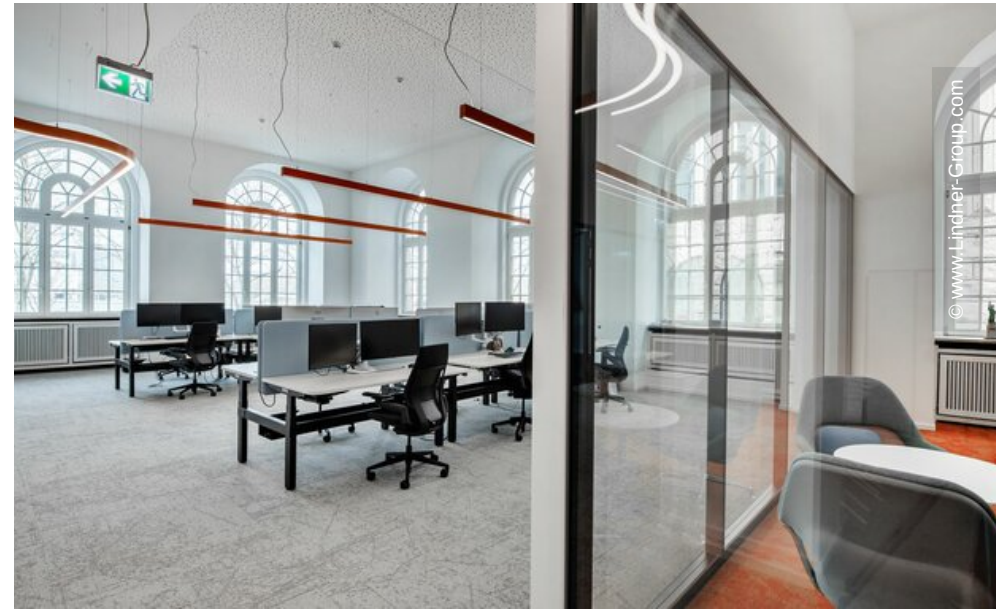
<b>Building Type</b>	Office Buildings, Industrial and commercial construction
----------------------	--

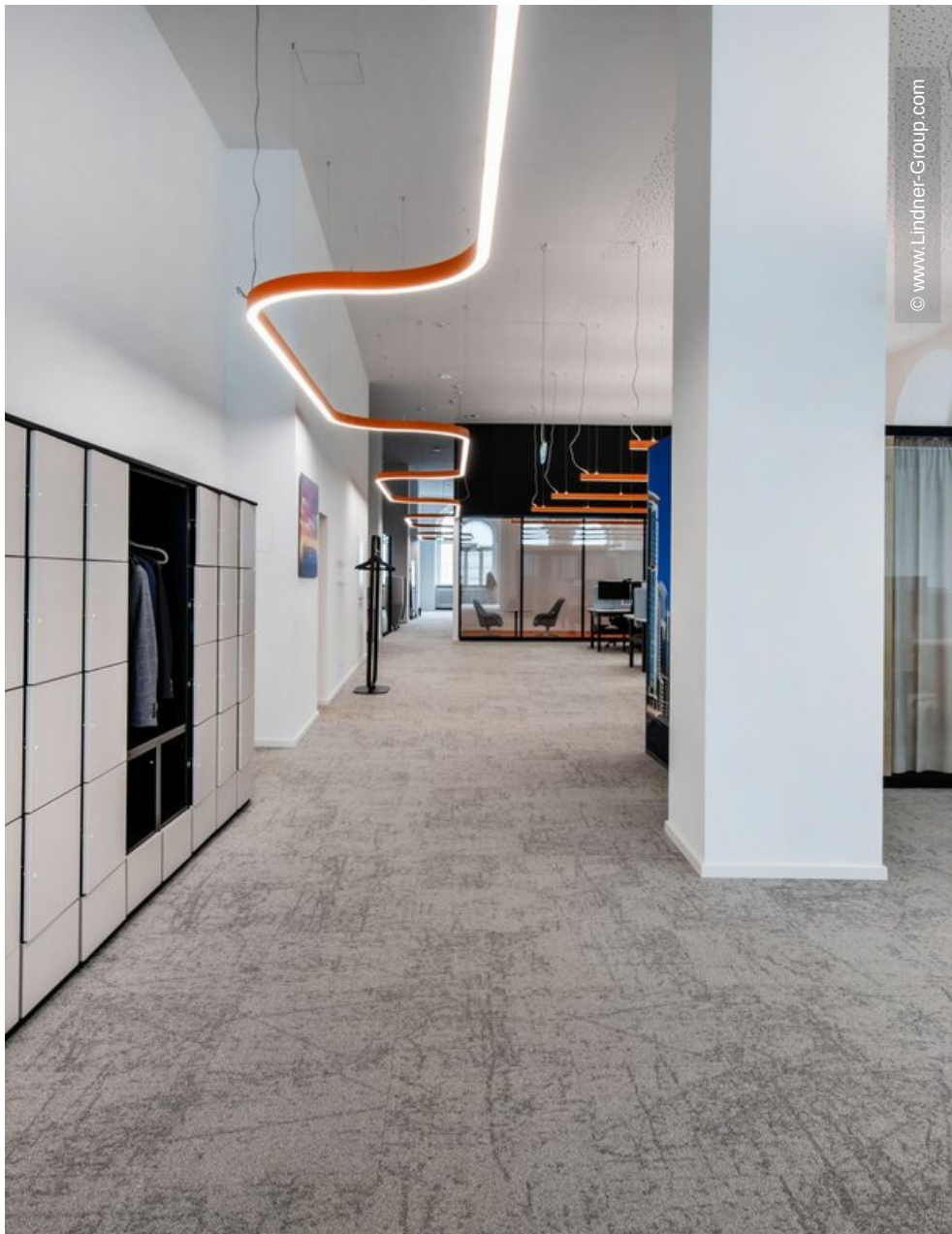
<b>Company Division</b>	Lindner SE   Fit-Out North.Northwest Germany, Lindner SE   Luminaires, Lindner SE   Partitions
<b>Completion</b>	2023
<b>Client</b>	Hapag-Lloyd AG

## Completed Works

- **Tenant fit-out**
  - Building services insulation
  - Construction site equipment
  - Floor covering works
  - Electrical works
  - Tiling works
  - Plasterboard ceiling systems
  - Plasterboard partition systems
  - Painting works
  - Metalworks
  - Cleaning works
  - Shell construction works
  - Sanitary work
  - Other design services
  - Kitchenette
  - Carpentry
  - Dry construction works
- **Building services engineering**
- **Luminaires**
  - Light channels
  - PL 2
- **Partitions**
  - Partition Systems Glass
  - Lindner Life Freeze 137



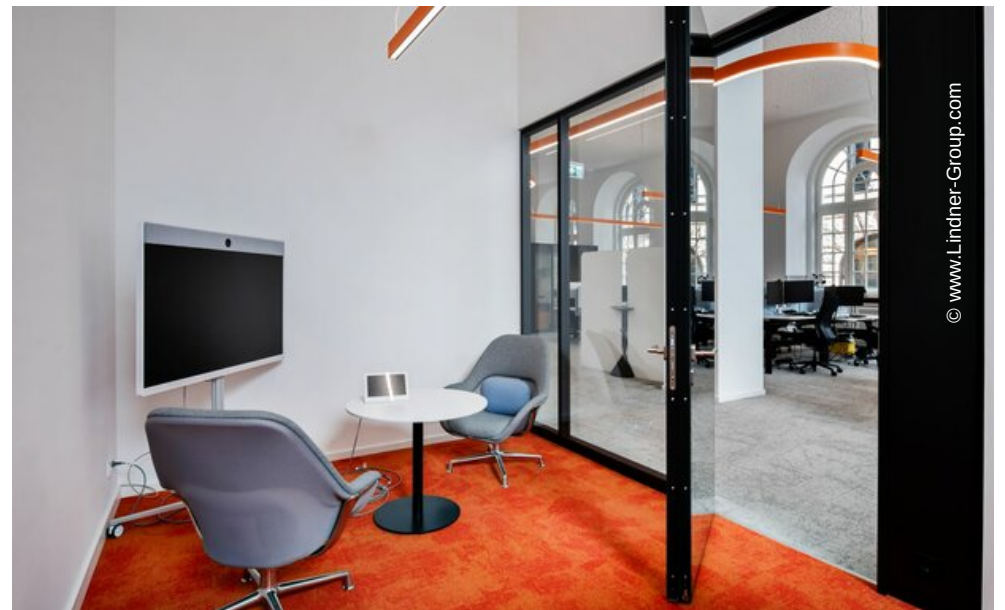




© www.Lindner-Group.com



© www.Lindner-Group.com



© www.Lindner-Group.com

